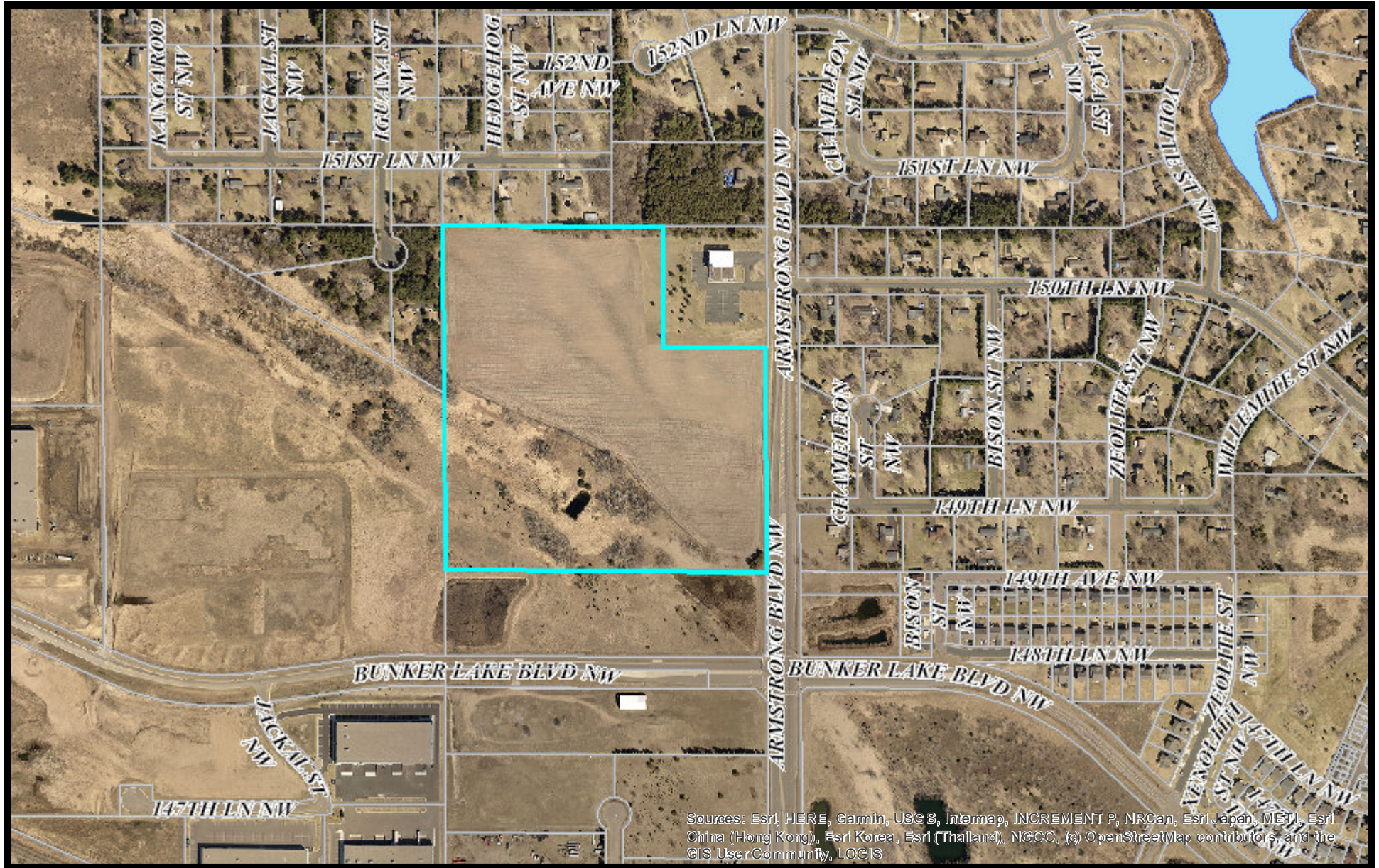
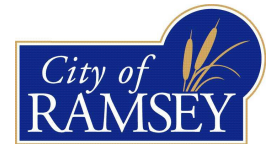


Zoning Amendment

Site Location Map: PID #20-32-25-44-0003



Sources: Esri, HERE, Garmin, USGS, Intermap, INCREMENT P, NRCan, Esri Japan, METI, Esri China (Hong Kong), Esri Korea, Esri (Thailand), NCCO, (c) OpenStreetMap contributors, and the GIS UserCommunity, LOGIS

9/2/2021, 11:48:54 AM

