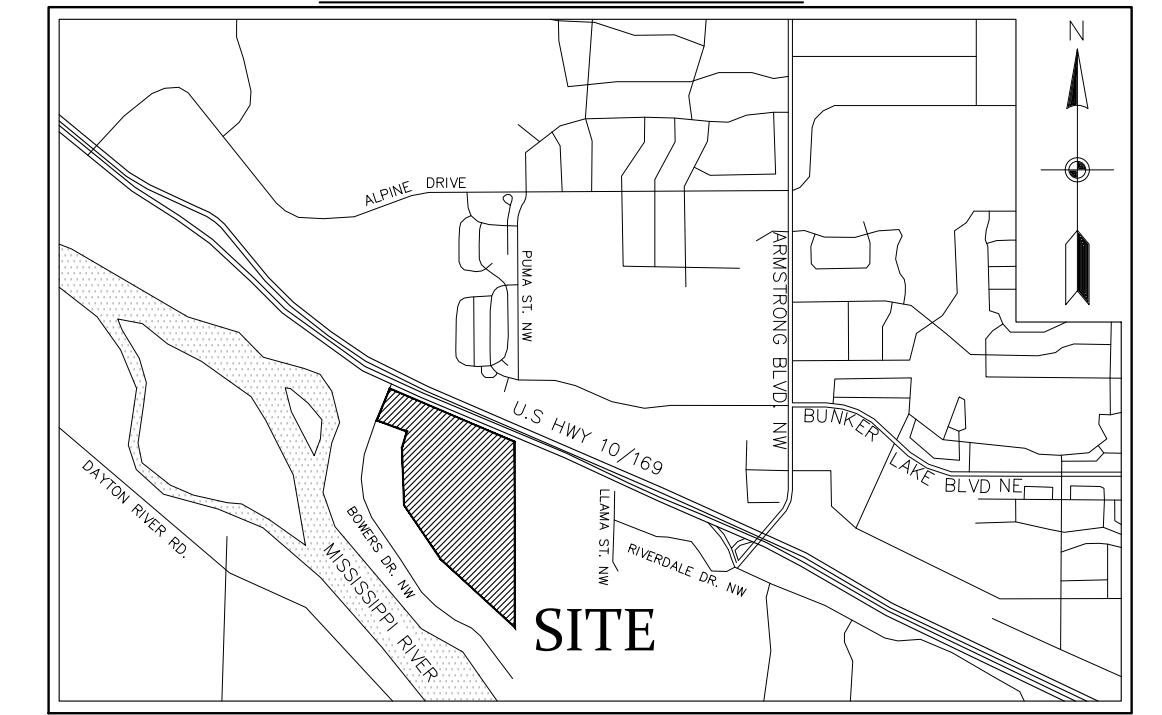


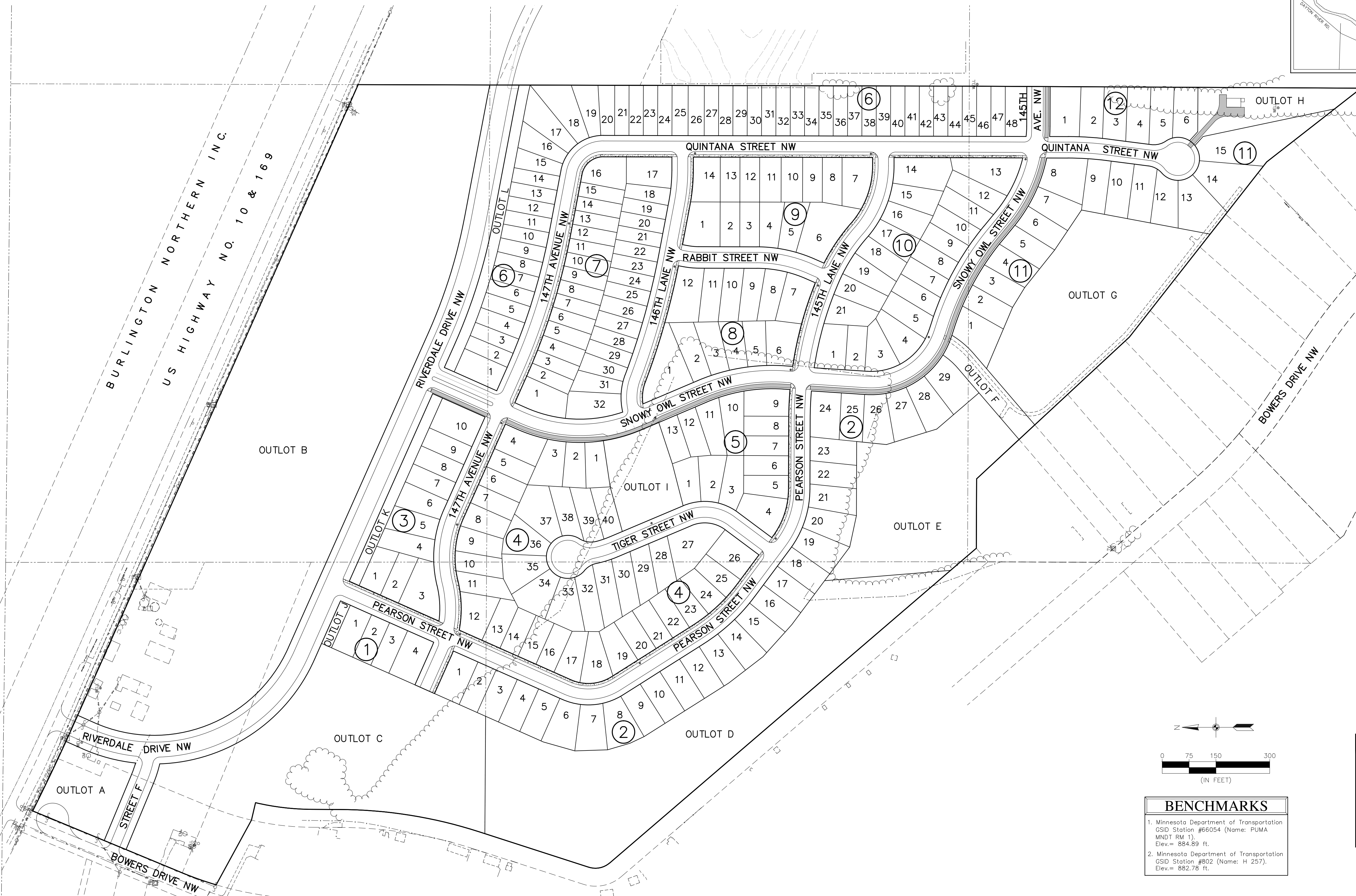
RIVERSTONE SOUTH

RAMSEY, MINNESOTA

VICINITY MAP

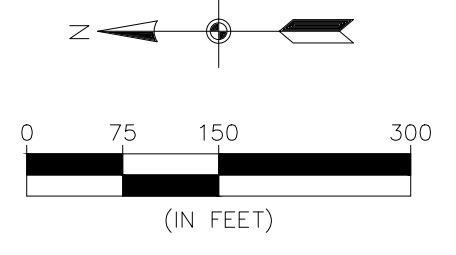


NOT TO SCALE



SHEET INDEX

- 1. COVER
- 2. EXISTING CONDITIONS
- 3. PRELIMINARY PLAT INDEX
- 4-11. PRELIMINARY PLAT
- 12-13. PRELIMINARY SITE & UTILITY PLAN
- 14. GRADING INDEX
- 15-22. PRELIMINARY GRADING & EROSION CONTROL PLANS
- 23-24. DETAILS
- 25. PAD ELEVATION TABLES
- L1-L4. LANDSCAPE PLANS



BENCHMARKS

- 1. Minnesota Department of Transportation GSD Station #66054 (Name: PLUMA MNDOT RM 1). Elev.= 884.89 ft.
- 2. Minnesota Department of Transportation GSD Station #802 (Name: H 257). Elev.= 882.78 ft.

CALL BEFORE YOU DIG

**Know what's below.
Call before you dig.**

The subsurface utility information shown on this plan is utility Quality Level D. This quality level was determined according to the guidelines of OJ/ASCE 38-02, entitled "Standard Guideline for the Collection and Depiction of Existing Subsurface Utility Data."

CARLSON McCAIN

ENGINEERING
SURVEYING
ENVIRONMENTAL

3890 PHEASANT RIDGE DR NE
SUITE 100
BLAINE, MN 55449
TEL 763.489.7900
FAX 763.489.7959
CARLSONMCCAIN.COM

I hereby certify that this plan, specification or report was prepared by me or under my direct supervision and that I am a duly Licensed Professional Engineer under the laws of the State of Minnesota

Print Name: Brian J. Krystofiak, P.E.
Signature: *Brian J. Krystofiak*
Date: 11/25/20 License #: 25063

Drawn: ADB
Designed: BJK
Date: 11/25/20

RIVERSTONE DEVELOPMENT, LLC
14015 Sunfish Lake B, Suite 400
Ramsey, MN 55303

RIVERSTONE SOUTH
Ramsey, MN

COVER SHEET

1 of 25