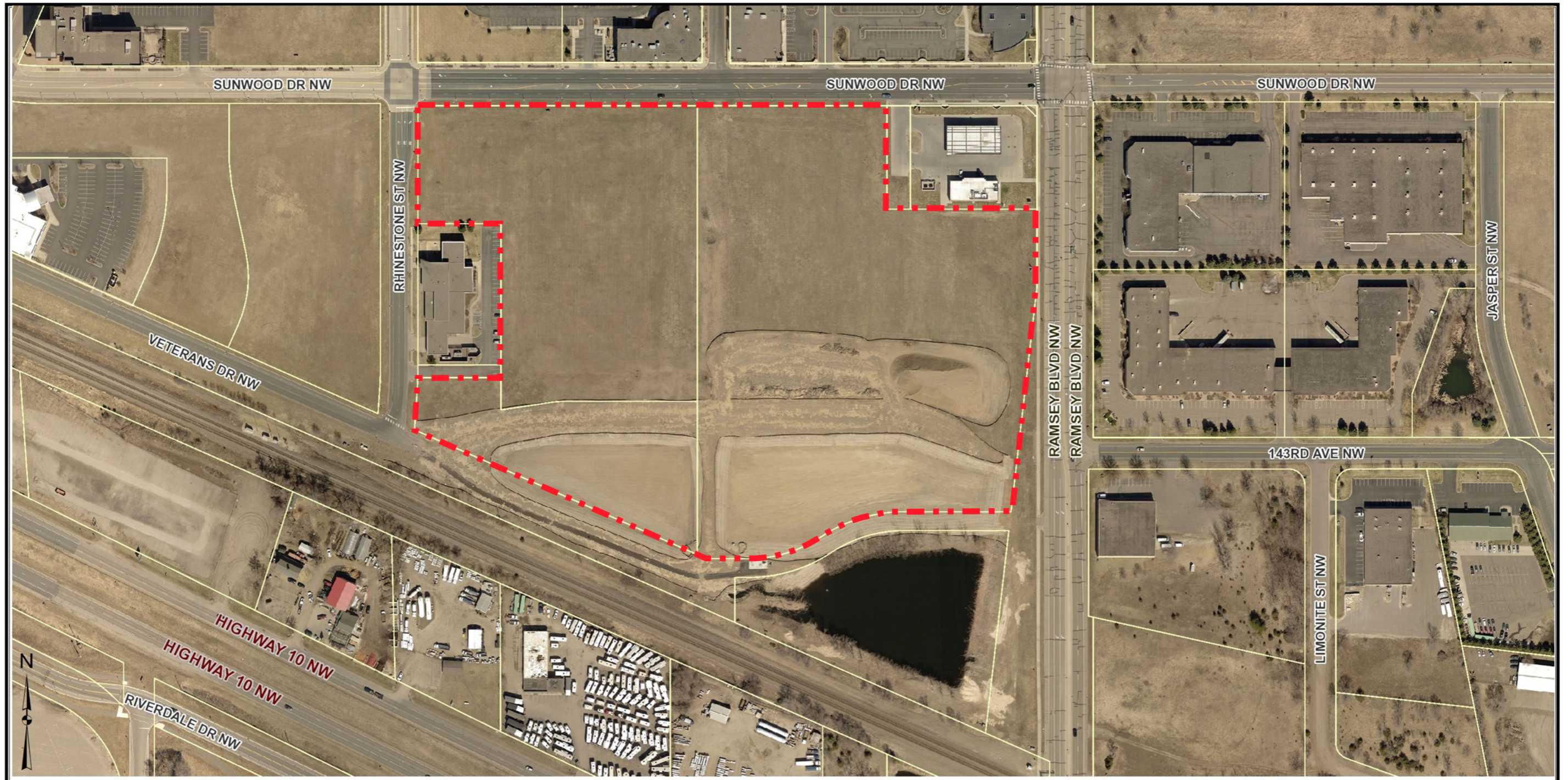
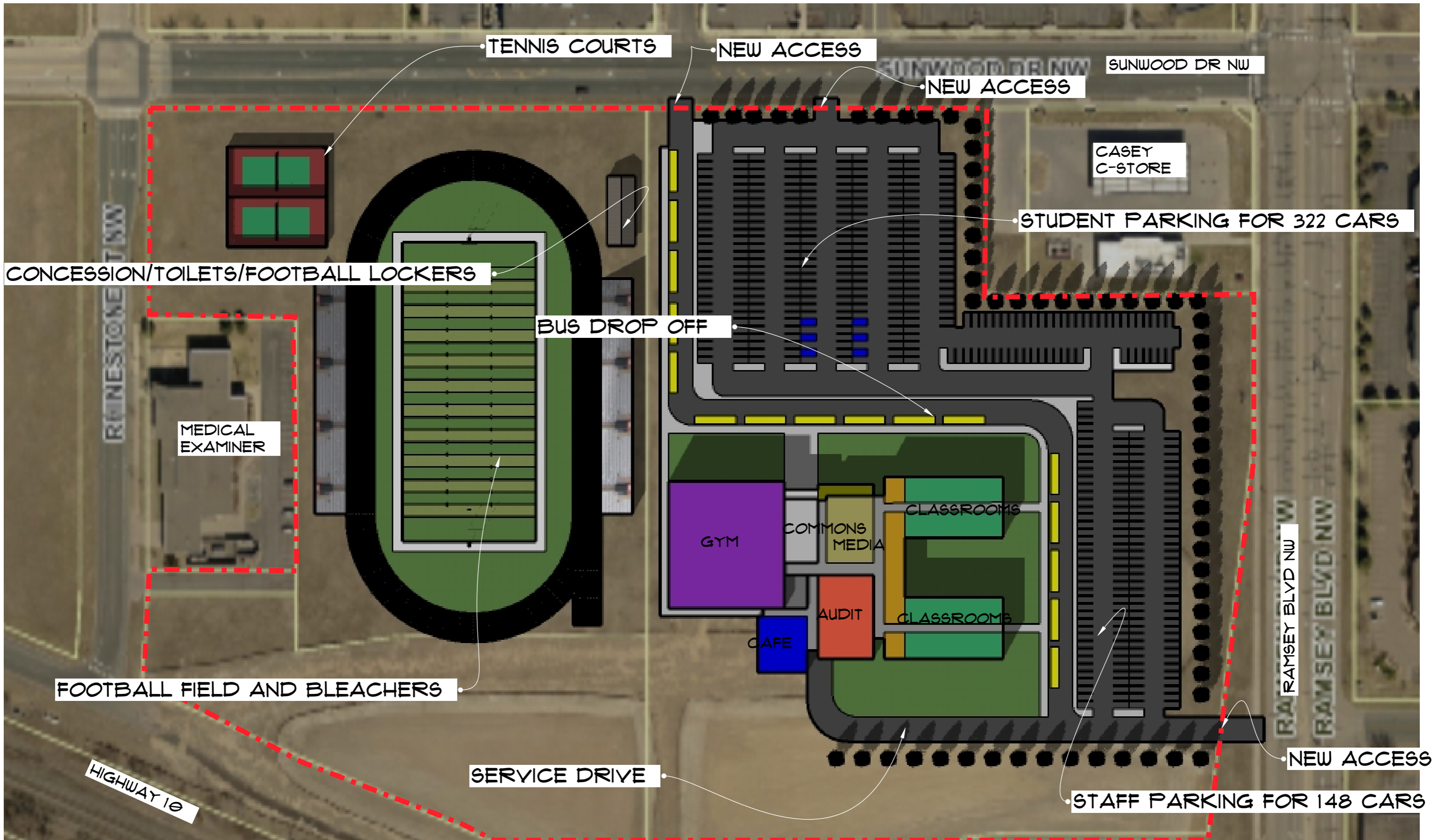


## PACT School site option 1



### DESIGN FRAMEWORK STANDARDS FOR THE COR 3A DISTRICT

- \* 60% OF THE STREET FRONTAGE TO BE BUILDING FACADE
- \* ALL PARKING NEEDS TO BE SCREENED BY FENCING OR LANDSCAPING
- \* EXTENSIVE AMOUNTS OF SIDEWALKS TO PROMOTE PEDESTRIAN ACTIVITY
- \* STORMWATER RETENTION PONDS NEED TO BE DESIGNED AS A HIGHLIGHTED LANDSCAPE FEATURE
- \* PARKING LOT LOCATION SHOULD BE LOCATED AT SIDE OR REAR OF BUILDING IF POSSIBLE NO MORE THAN 50% IN FRONT
- \* USE HIGH QUALITY MATERIALS (MASONRY)
- \* MAXIMIZE GLAZING ON THE FRONT SIDE OF THE BUILDING
- \* THE FRONT OF THE BUILDING NEEDS TO BE PLACED ON THE PROPERTY LINE WITH NO SETBACK

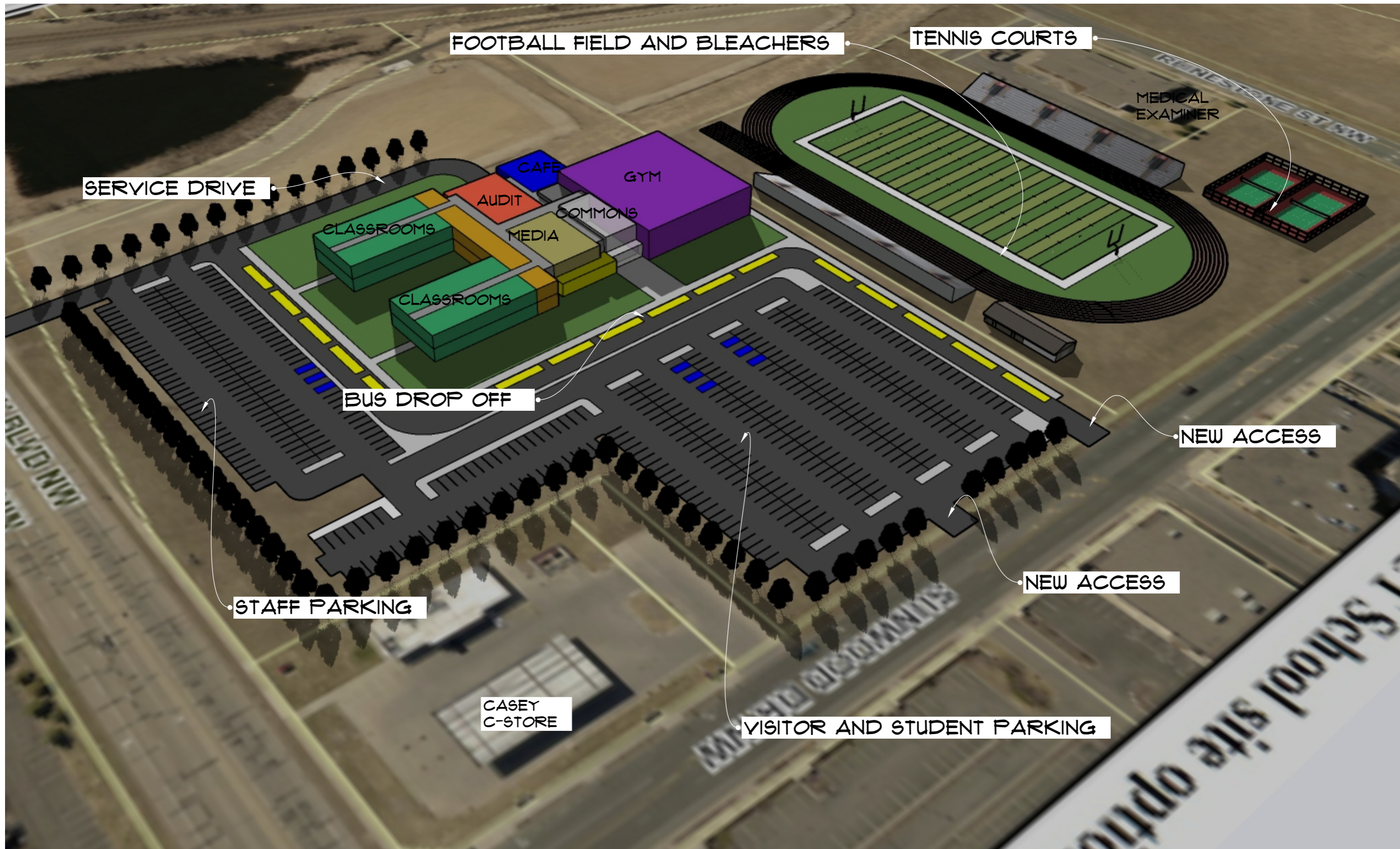


# PACT MIDDLE/HIGH SCHOOL, RAMSEY, MN

TOTAL BUILDING AREA 110,000 SF  
 TOTAL PARKING 410 STALLS

**Site option 1**

9/16/2021



FOOTBALL FIELD AND BLEACHERS

TENNIS COURTS

MEDICAL EXAMINER

SERVICE DRIVE

CAFE

GYM

AUDIT

COMMONS

CLASSROOMS

MEDIA

CLASSROOMS

BUS DROP OFF

NEW ACCESS

STAFF PARKING

NEW ACCESS

CASEY C-STORE

VISITOR AND STUDENT PARKING



PACT MIDDLE/HIGH SCHOOL, RAMSEY, MN

Site option 1

9/16/2021