

# The Ramsey Gateway Project - Highway 10 Business & Property Owner Meetings

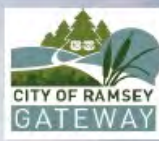
Thursday December 17, 2020



Anoka County  
MINNESOTA







# Project Purpose

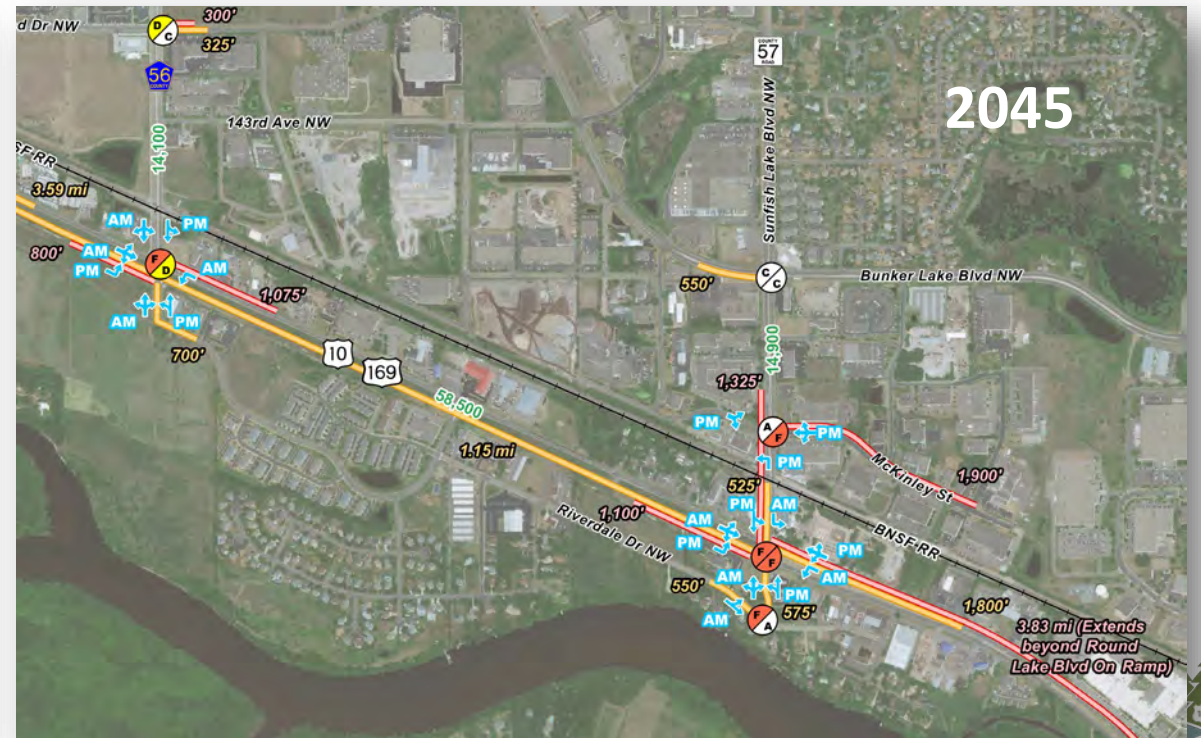
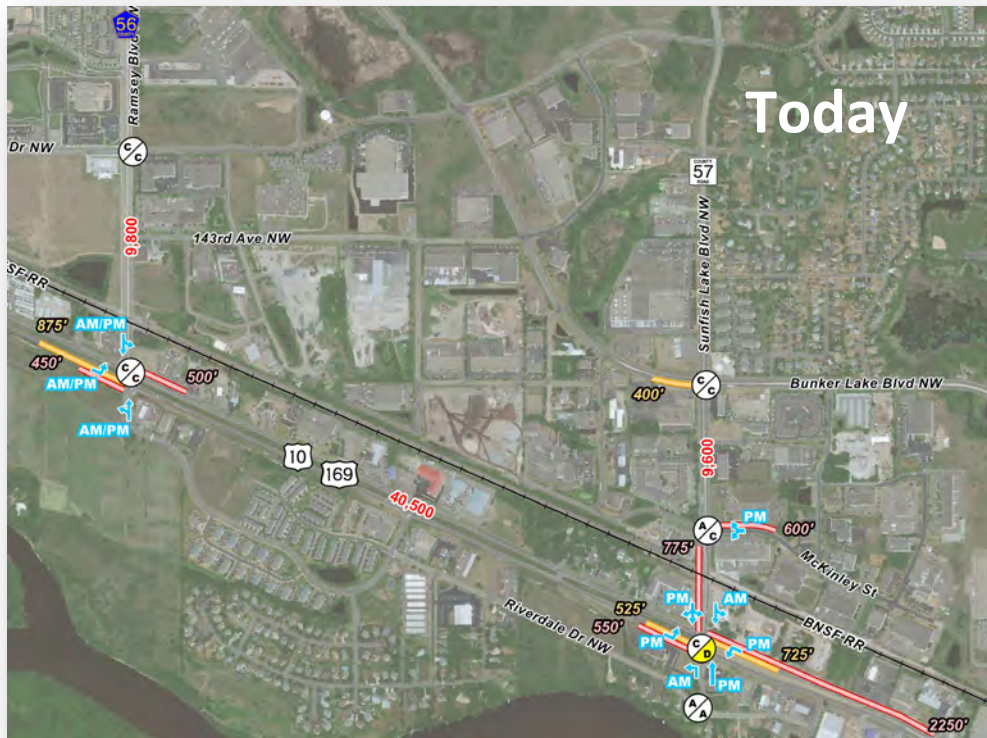
- To address capacity and operation issues, improve safety, and maintain the functionality of Highway 10 as an important route in the Statewide Transportation System.
  - 35,500 to 56,000 vpd existing
  - 49,000 to 74,200 vpd forecast
  - 48-53% AM/PM through trips



# Project Need

- Capacity and Operations

- Highway 10 intersections with Ramsey Blvd and Sunfish Lake Blvd are failing today
  - NB railroad queues extend onto Highway 10
  - By 2045, intersection and mainline delays are significant throughout



# Project Need

- Safety
  - High number of crashes
    - 90 crashes per year
    - 60% rear end
    - Ramsey Blvd and Sunfish Lake Blvd crashes above normal range
    - 3 fatal crashes in 10 yrs
  - Numerous access points
    - 73 access points contribute to mobility and safety issues



Sunfish Lake Blvd will be the first traffic signal encountered for westbound traffic after the Anoka Project is complete in 2024.





From 2000 to Today

# PROJECT HISTORY

# 2019 Corridor Study Vision

*Design Features Consistent with 2009 Study and EA:*

- *Grade separation of highway and rail crossings at Sunfish and Ramsey Blvd.*
- *Local roadways elevated over highway and railroad*

*Study sought to refine 2009 plan to provide lower cost, reduced impact solution while achieving the necessary improvement benefits*

NOTES:  
Green shading denotes potential grading areas.  
Frontage road alignments are preliminary.  
Right-in/right-out locations on Highway 10 are preliminary.  
Intersection controls to be determined in preliminary design.





# The Ramsey Gateway Project

will provide grade separations of US Highway 10/169 and the BNSF Railway to address major crash and congestion issues that are greatly impacting the movement of goods and people between the Minneapolis/Saint Paul metro area and greater northern Minnesota.



### US Highway 10/169 Importance

- » A principal arterial carrying up to 55,000 vehicles per day (2,800 heavy commercial vehicles)
- » Significant commuter and freight corridor between Minneapolis – St Paul, northwestern Minnesota, and into North Dakota
- » Busiest rail line in MN with 57-81 freight trains and 14 commuter trains per day
- » Connection to northern Minnesota lakes and outdoor tourism industry

### Project Need

- » 125 crashes in the last 3 years (2017-2019), 3 fatal crashes in the last 10 years
- » Crash rate 2x the state average
- » Traffic backups approaching 1 mile by 2025 and almost 4 miles in 2045
- » Fully funded Anoka and Elk River 2023/24 projects will result in Ramsey having the only two remaining at-grade traffic signals on the US Highway 10/169 freeway system from Minneapolis/St Paul to Elk River.

## Funding Need



## Funding Sources

### Competitive Funding Sources

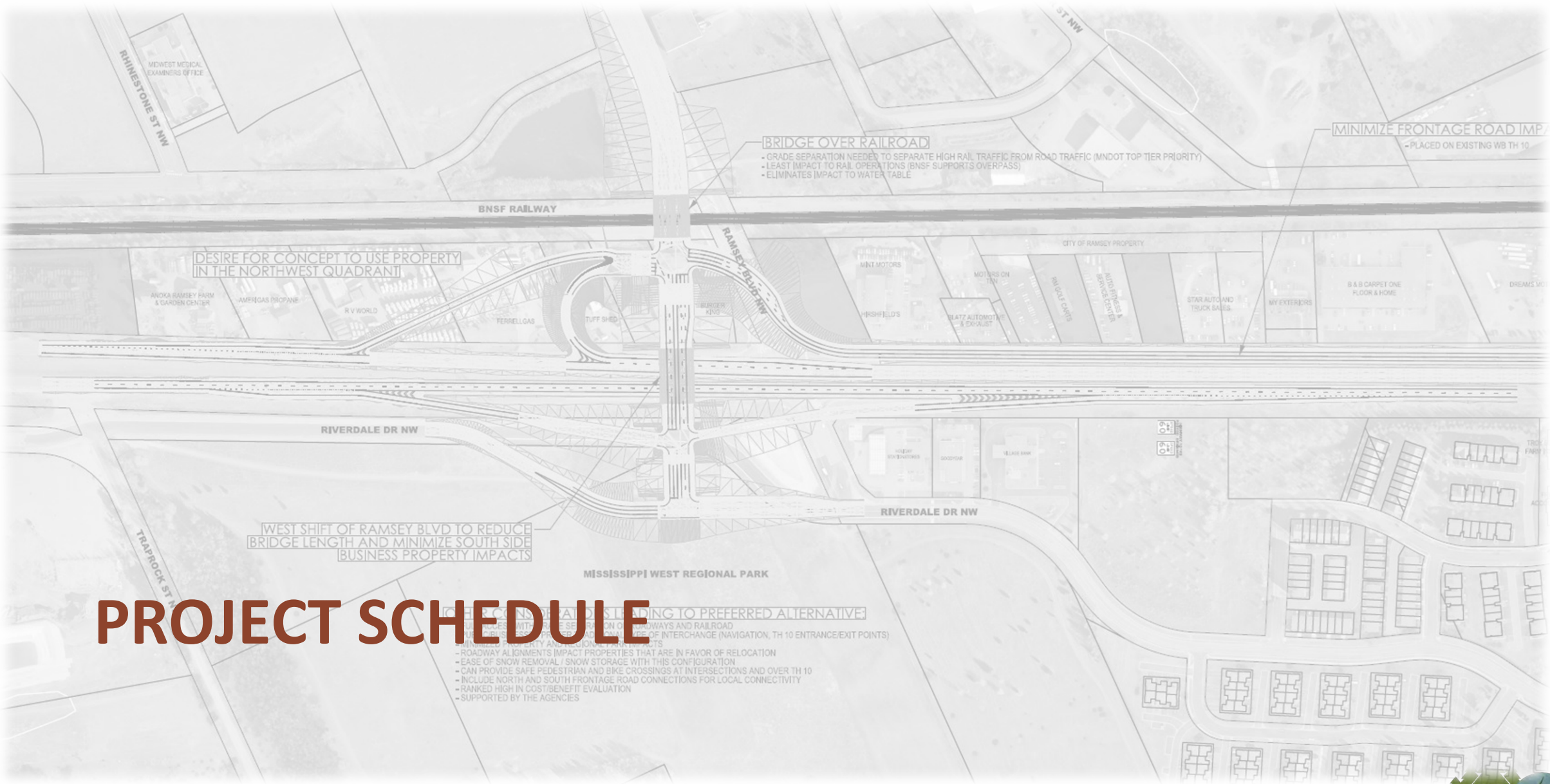
- INFRA Award
- Regional Solicitation
- Minnesota Highway Freight Program

### State and Local Contributions

- Anoka County
- City of Ramsey
- MnDOT Preservation Funds
- 2020 State Bonding Bill
- 2017 State Rail Funds
- 2018 State Bonding Bill

## Project Schedule

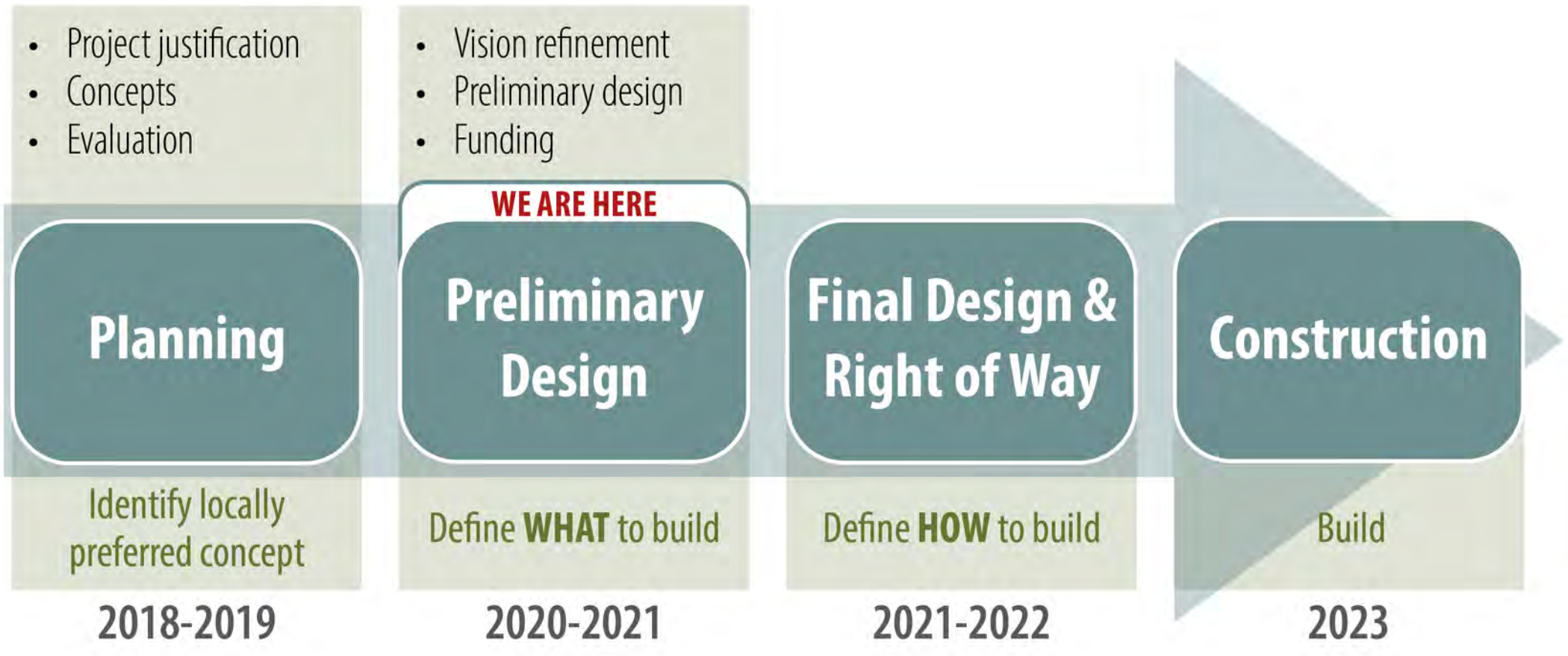
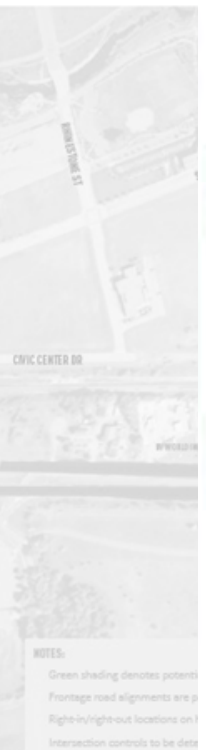




# PROJECT SCHEDULE

- THE CONDITIONS LEADING TO PREFERRED ALTERNATIVE:**
- ROADWAY ALIGNMENTS IMPACT PROPERTIES THAT ARE IN FAVOR OF RELOCATION
  - EASE OF SNOW REMOVAL / SNOW STORAGE WITH THIS CONFIGURATION
  - CAN PROVIDE SAFE PEDESTRIAN AND BIKE CROSSINGS AT INTERSECTIONS AND OVER TH 10
  - INCLUDE NORTH AND SOUTH FRONTAGE ROAD CONNECTIONS FOR LOCAL CONNECTIVITY
  - RANKED HIGH IN COST/BENEFIT EVALUATION
  - SUPPORTED BY THE AGENCIES

# Project Development Process



NOTES:  
Green shading denotes potential  
Frontage road alignments are proposed  
Right-of-way locations on  
Intersection controls to be determined



# Anoka Solution 2022-2023 Construction



The U.S. Highway 10/169 Project will reduce crashes and improve traffic operations. This will result in improved mobility and reliability for all users of the project corridor.

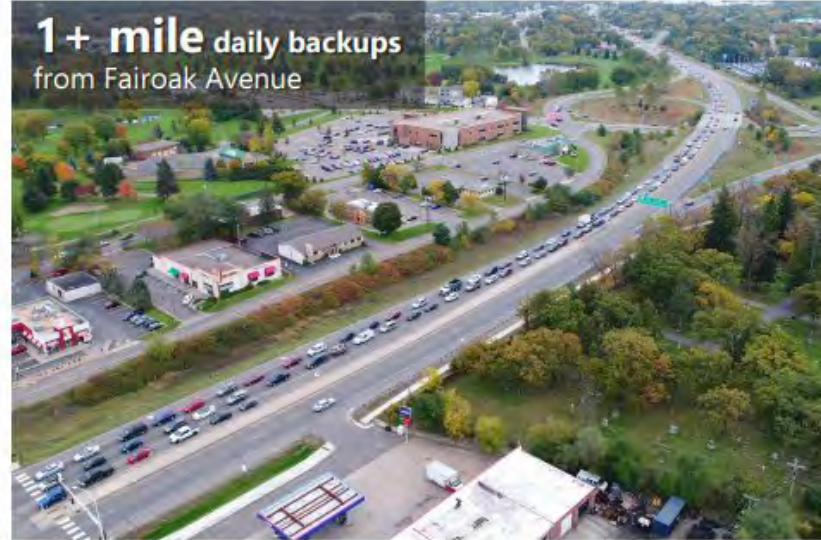
## Existing Issues

- 60,600 vehicles per day
- Principal Arterial moves regional freight; 3,300 heavy commercial vehicles
- 1+ mile back-ups during peak hour
- 21 mph avg. peak hour speed (60 mph posted)
- 1,128 crashes (2 fatal) from 2006-2015
- Crash Rate 1.5x state average
- Segmented local network forces local highway trips

## Investment Results

- 75% delay reduction
- 57% crash reduction
- 4.0 benefit-cost ratio
- Accommodate 90,000 vehicles/day
- Local trips on local network
- Safe and reliable movement of goods and services

**1+ mile** daily backups from Fairoak Avenue

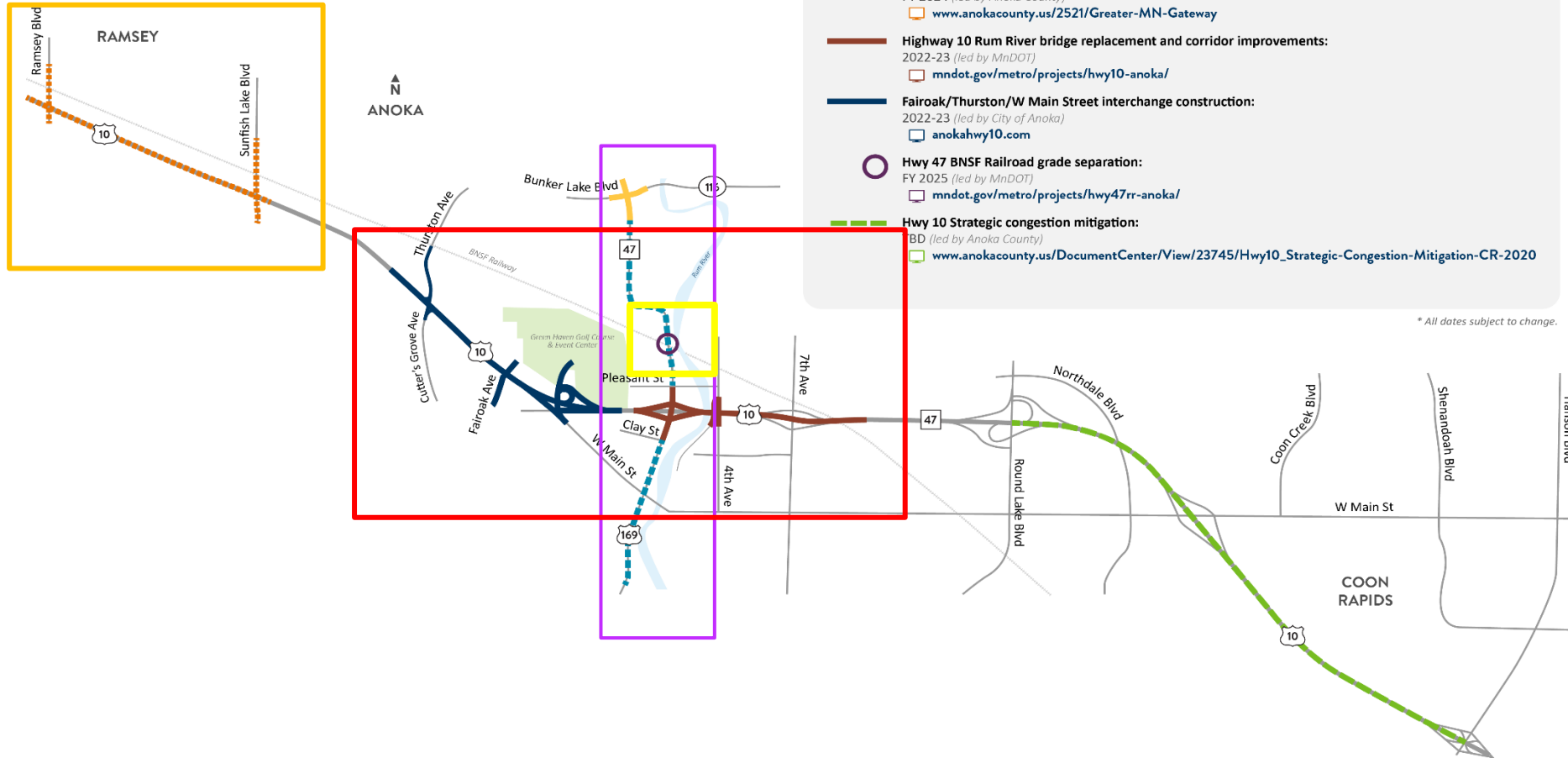


The City of Anoka continues to work closely with MnDOT, Metropolitan Council, Anoka County, and other partners to plan, design, and implement fiscally-responsible safety and operation improvements to benefit all U.S. Highway 10/169 corridor users.



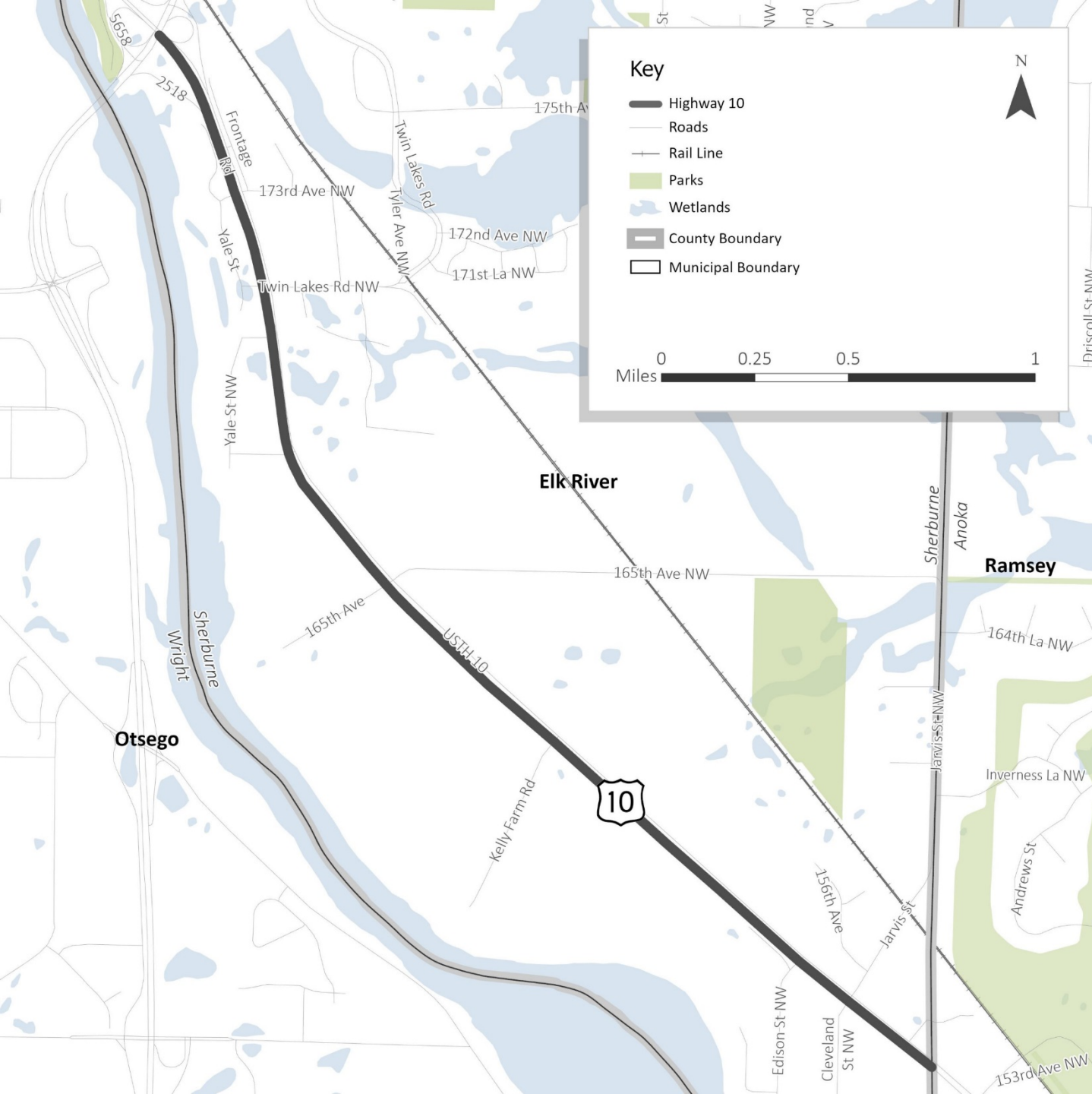
All funding is committed!

**\$** Total Investment **80M**



# US 10 Projects Overview





### Elk River Freeway

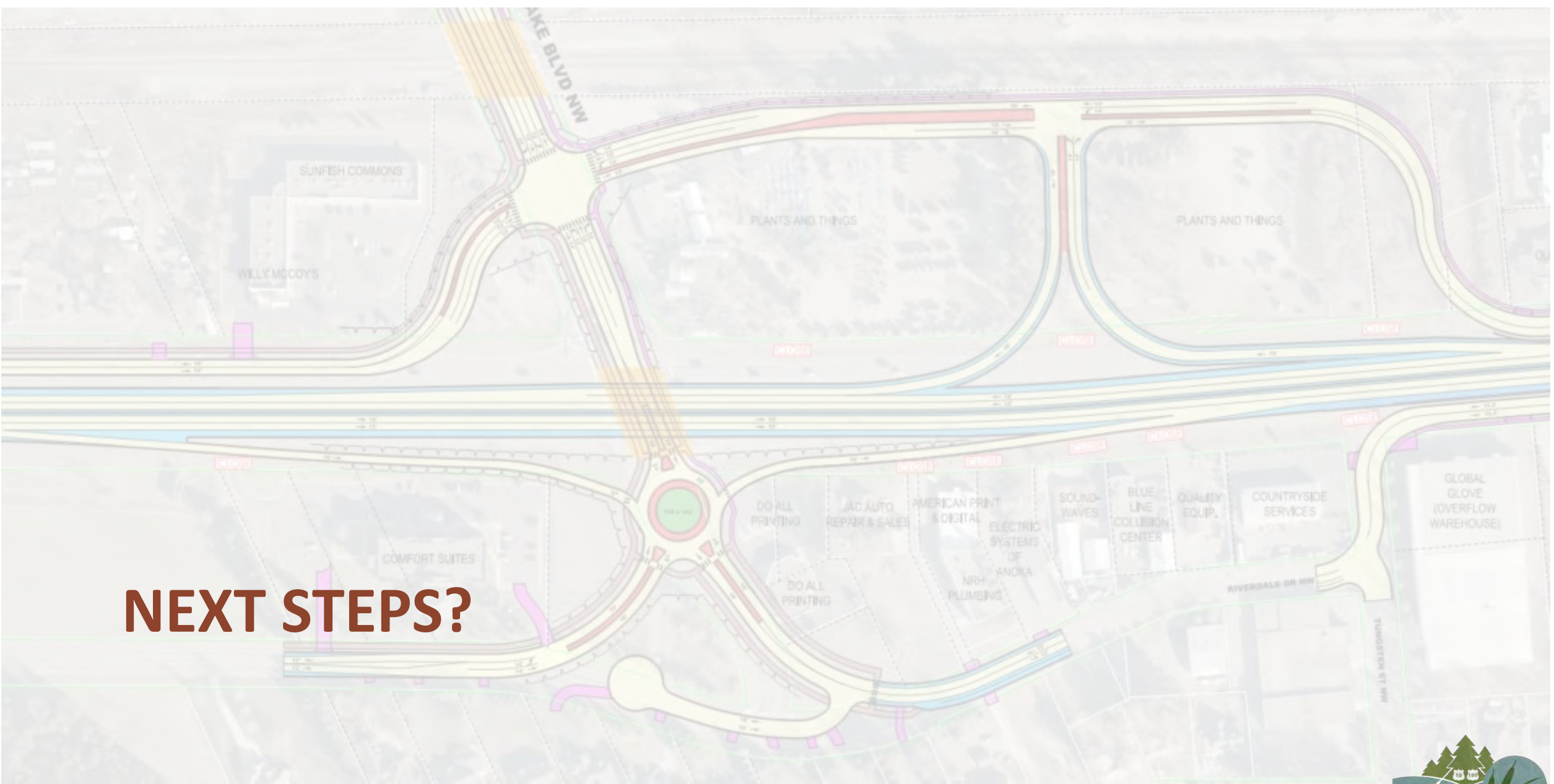
- Construct
- Install new bridge
- Sidewalk
- Add access
- Replace NB bridge



# Project Schedule



**NEXT STEPS?**



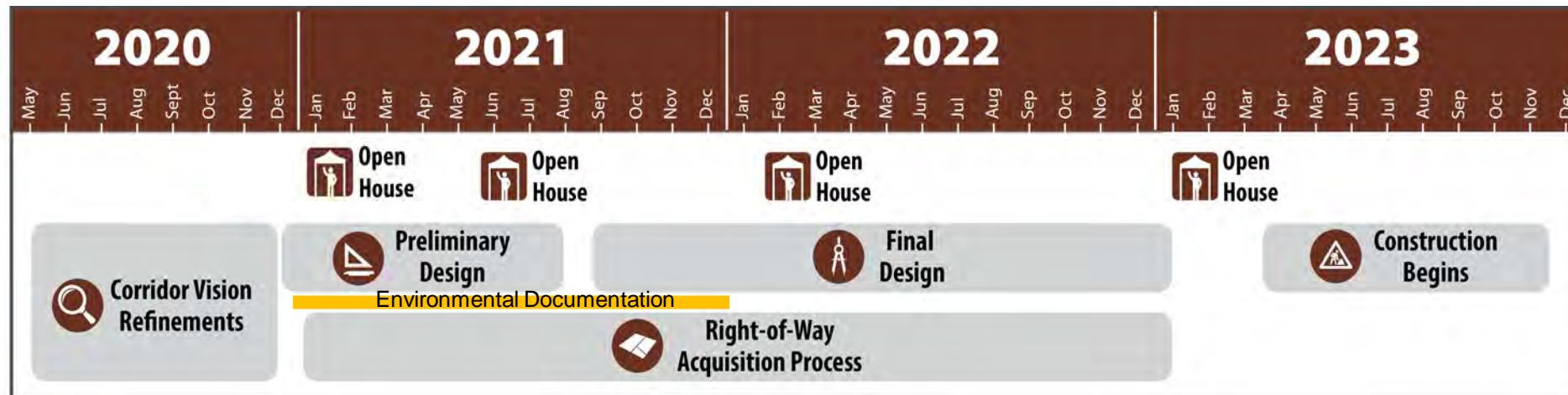
# Next Steps

- **Today?**

- Do you want to talk one on one with project team member?
- Unmute and speak up!!!

- **After Today?**

- Follow up one on one discussion? Call or email Ashley Hudson at **701-566-2349** or **[Ashley.Hudson@bolton-menk.com](mailto:Ashley.Hudson@bolton-menk.com)**.
- Public (virtual) Open House anticipated for February 2021
- Right-of-Way Staff anticipated to be reaching out by February 2021





# QUESTIONS