



**1 - Summary Tally**

Created by: Chris Anderson  
On: 08/05/2021 12:55 PM

Please provide a summary tally of total significant DBH inches on site, # of inches proposed to be removed, # of inches proposed to be saved, and # of inches exempt from calculation (e.g. invasive species, removed for stormwater ponds, etc.).

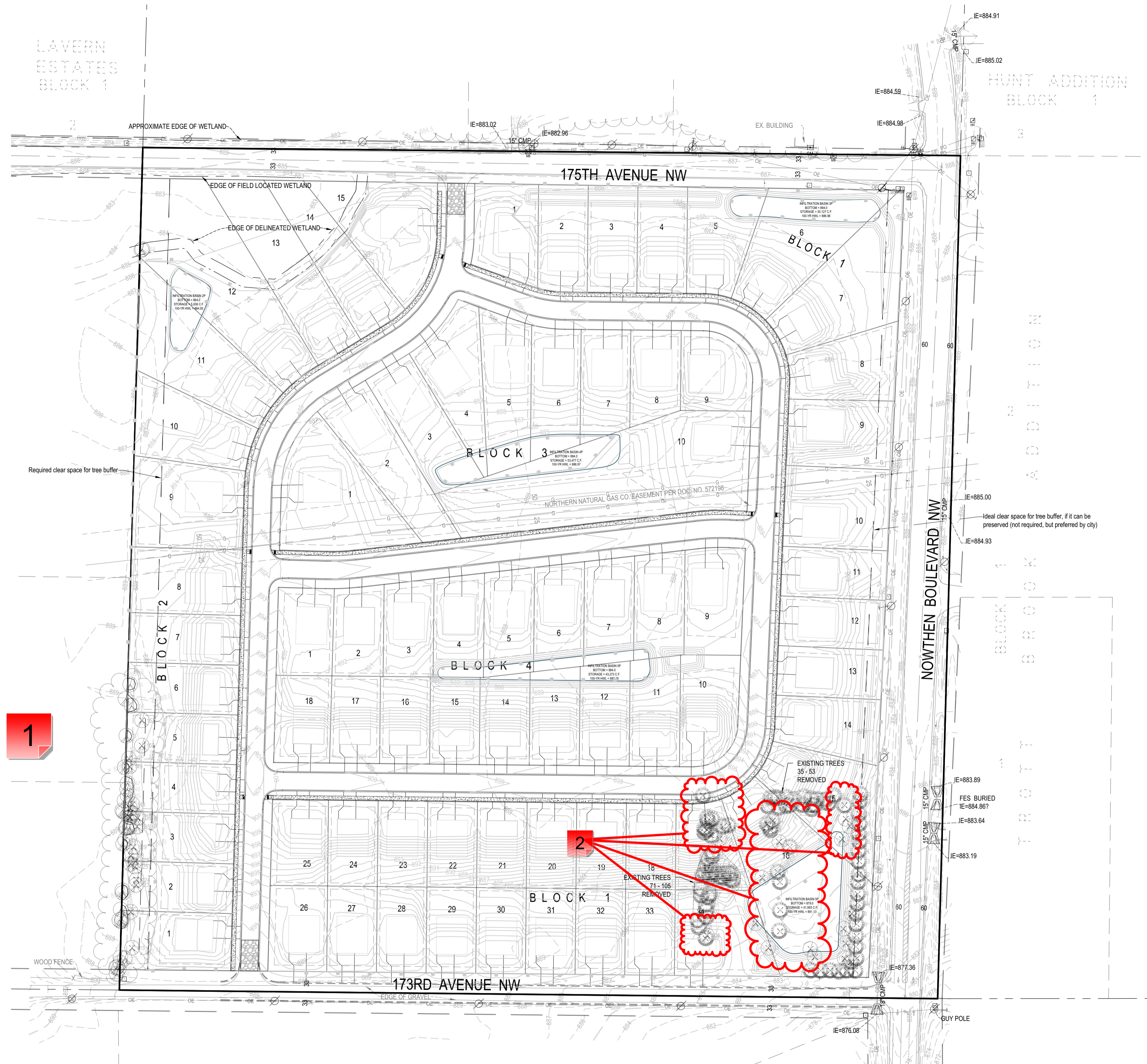
----- 0 Replies -----

**2 - Column Headers**

Created by: Chris Anderson  
On: 08/11/2021 10:04 AM

Please include column headers.

----- 0 Replies -----



**TREE PRESERVATION NOTES**

- Total Significant Trees Inventoried: 158  
 Total Significant Trees Removed: 130  
 Total Significant Trees Preserved: 28  
 Total Caliper Inches Removed: 1,679  
 Caliper inches exempt for ponding: 202  
 See Sheet L201 for Tree Replacement Requirements and Calculations

**LEGEND**

- Tree Removal
- Silt Fence

**TREE PRESERVATION LIST**

See sheet L1.2 for tree preservation table.

**DEVELOPER**

**PLATINUM LAND MN, LLC**  
 5191 159TH AVE NW  
 ANDOVER, MN 55304  
 TEL 763-301-4550

**MUNICIPALITY**

**PROJECT**

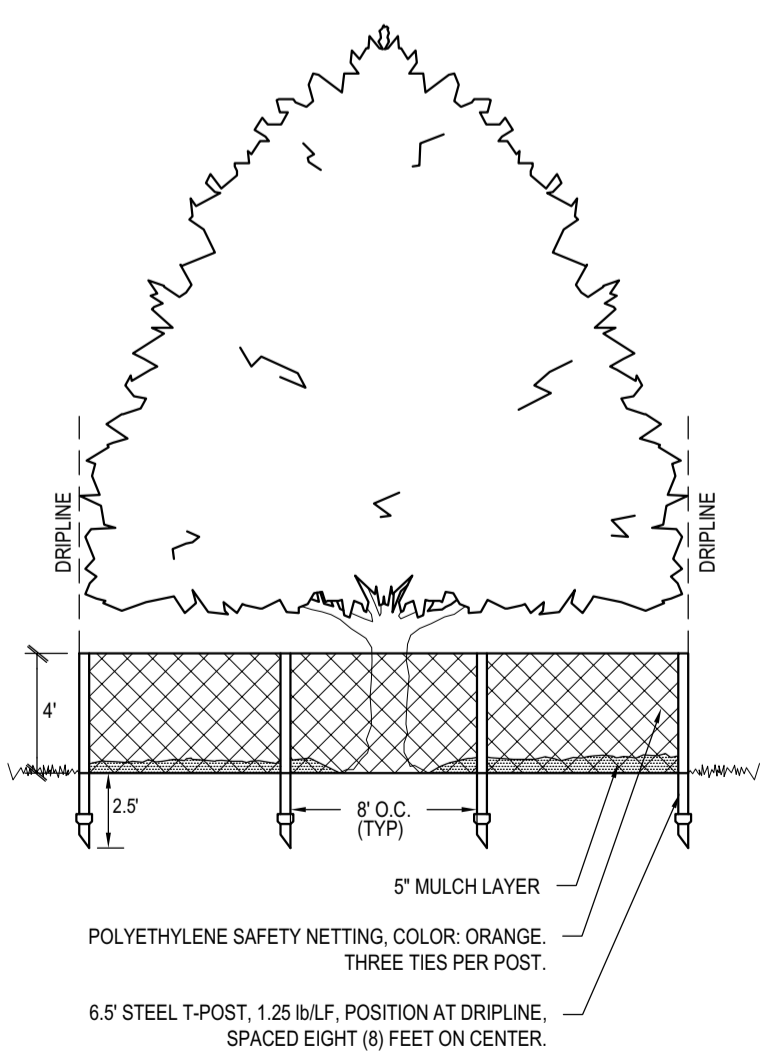
**NORTH BROOK MEADOWS**  
 RAMSEY, MINNESOTA

**ISSUE / REVISION HISTORY**

DATE	ISSUE / REVISION	REVIEW
16 JUL 2021	PRELIMINARY PLAT SUBMITTAL	CNC

1

2



INSTALL TREE PROTECTION DEVICES PRIOR TO START OF LAND DISTURBANCE. MAINTAIN UNTIL FINAL LANDSCAPE IS INSTALLED.

**TREE PROTECTION**

NO SCALE

**CERTIFICATION**

I hereby certify that this plan was prepared by me or under my direct supervision, and that I am a duly Licensed Landscape Architect under the laws of the State of Minnesota.

**PRELIMINARY NOT FOR CONSTRUCTION**

Signature shown is a digital representation of the original signed copy of this plan on file at Landform Professional Services, Inc. A hard copy is available upon request.

IF THE SIGNATURE, SEAL OR FOUR LINES DIRECTLY ABOVE ARE NOT VISIBLE, THIS SHEET HAS BEEN REPRODUCED BEYOND INTENDED READABILITY AND IS NO LONGER A VALID DOCUMENT. PLEASE CONTACT THE ENGINEER TO REQUEST ADDITIONAL DOCUMENTS.

**PRELIMINARY PLAT**  
 07/16/2021

**LANDFORM**

From Site to Finish

105 South Fifth Avenue Tel: 612-252-9070  
 Suite 513 Fax: 612-252-9077  
 Minneapolis, MN 55401 Web: landform.net

FILE NAME L101PLM001.dwg  
 PROJECT NO. PLM20001

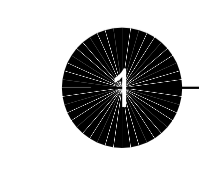
**TREE PRESERVATION PLAN**

**L1.1**

**811**  
 Know what's Below.  
 Call before you dig.

**NORTH**

0 100 200



L1.1.pdf V1 - Changemark Notes ( 2 Notes )

---

**1 - Tree ID #s**

Created by: Chris Anderson  
On: 08/05/2021 01:00 PM

Change color of Tree ID #s to black to differentiate from the contour elevations.

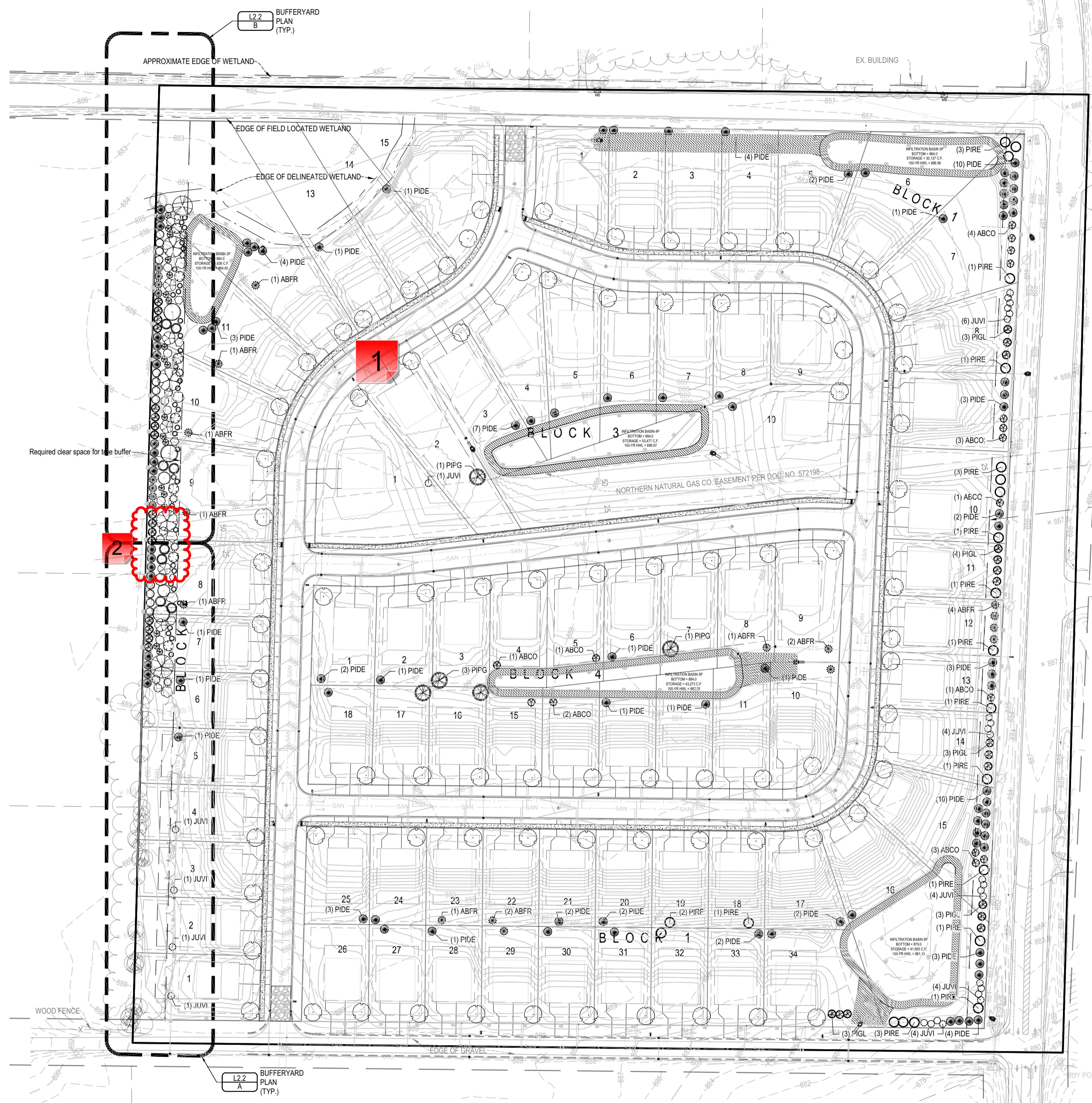
----- 0 Replies -----

**2 - Tree Removals**

Created by: Chris Anderson  
On: 08/11/2021 10:06 AM

It appears that all of these trees are going to be removed, based on grading, stormwater pond location, and house pad locations. Update sheet accordingly.

----- 0 Replies -----



**LANDSCAPING NOTES**

- Landscape Contractor shall visit the site prior to submitting a bid to become familiar with the site conditions.
- Contact Utility Service providers for field location of services 72 hours prior to beginning.
- Coordinate installation with Contractors performing related work.
- Plant material shall conform to the American Association of Nurserymen Standards and be of hardy stock, free from disease, infestation, damage, and disfigurement. For discrepancy between the number of plants on the Schedule and the number shown on the Drawing, the Drawing shall govern.
- All existing deciduous and coniferous trees are to be trimmed of dead wood and pruned to a natural uniform shape.
- Planting soil shall consist of 4 parts topsoil to 1 part peat humus, with 3 pounds of commercial fertilizer added per cubic yard.
- Spread a minimum of 4 inches of topsoil and sod all turf areas disturbed by Construction.
- See Details for depth of planting soil.
- Follow current MNDOT Seeding Manual for planting instructions for establishment of native seed and provide coordination for required erosion prevention and sediment control.
- Native seeds shall be of Minnesota origin and certified by the Minnesota Crop Improvement Association (MCIA). Provide verifying documentation to the Owner 30 days minimum prior to installation.
- Per City Ordinance all dead or injured plant materials must be replaced at the end of the second growing season.
- Quantities are totals for design. If there is a discrepancy between the plan and the plant schedule, the plan shall govern.

**LANDSCAPE REQUIREMENTS**

**Lot Requirements**  
2 overstory trees per dwelling unit

The compliment of trees fulfilling the landscaping requirements shall not be less than 25 percent deciduous and not less than 25 percent coniferous.

Per city code, minimum tree sizes shall be: 1 caliper inch for deciduous and 5 ft height for coniferous.

**Bufferyard Requirements**  
Minimum 45' width with the following number of trees per 100' of property boundary adjacent to the impacted use:  
8 Overstory trees  
8 Evergreen trees  
8 Understory trees

**Tree Replacement Requirements**  
For every 1.0" caliper lost beyond 40% of total caliper inches of significant trees on site, replace at a rate of 1.25" caliper.  
Required caliper inches: 746  
Proposed caliper inches: 750

**PLANTING SCHEDULE**

TREES	CODE	QTY	BOTANICAL NAME	COMMON NAME	MATURE SIZE	PLANTING SIZE	ROOT COND.
DECIDUOUS TREES	CODE	QTY	BOTANICAL NAME	COMMON NAME	MATURE SIZE	PLANTING SIZE	ROOT COND.
DT	82	Deciduous Tree			30' H x 20' W		
ACFA	7	Acer x freemanii 'Armstrong'	Armstrong Freeman Maple	60' H x 15' W	2" Cal.	B&B	
ACXJ	3	Acer x freemanii 'Jeffersred'	Autumn Blaze Maple	60' H x 40' W	2" Cal.	B&B	
BENI2	1	Betula nigra 'BNMTF' TM	Dura Heat River Birch	60' H x 50' W	2" Cal.	B&B	
GBPS	5	Ginkgo biloba 'Princeton Sentry'	Princeton Sentry Ginkgo	40' H x 30' W	2" Cal.	B&B	
GTID	6	Gleditsia triacanthos inermis 'Draves' TM	Street Keeper Honey Locust	45' H x 20' W	2" Cal.	B&B	
GTSK	3	Gleditsia triacanthos 'Skyline'	Skyline Honeylocust	40' H x 30' W	2" Cal.	B&B	
QUBI	2	Quercus bicolor	Swamp White Oak	55' H x 55' W	2" Cal.	B&B	
QUEL	2	Quercus ellipsoidalis	Northern Pin Oak	60' H x 50' W	2" Cal.	B&B	
QUCS	19	Quercus 'Crimson Spire'	Crimson Spire Oak	50' H x 15' W	2" Cal.	B&B	
ULNH	8	Ulmus x 'New Horizon'	New Horizon Elm	35' H x 25' W	2" Cal.	B&B	
EVERGREEN TREES	CODE	QTY	BOTANICAL NAME	COMMON NAME	MATURE SIZE	PLANTING SIZE	ROOT COND.
ABCO	16	Abies concolor	White Fir	30' H x 20' W	6" Ht.	B&B	
ABFR	23	Abies fraseri	Fraser Fir	30' H x 20' W	6" Ht.	B&B	
JUVI	27	Juniperus virginiana	Eastern Red Cedar	15' H x 10' W	6" Ht.	B&B	
PIGL	32	Picea glauca	White Spruce	50' H x 20' W	6" Ht.	B&B	
PIDE	99	Picea glauca 'Densata'	Black Hills Spruce	45' H x 20' W	6" Ht.	B&B	
PIPG	5	Picea pungens 'Glauca'	Blue Colorado Spruce	80' H x 30' W	6" Ht.	B&B	
PIRE	22	Pinus resinosa	Red Pine	40' H x 25' W	6" Ht.	B&B	
THOC	12	Thuja occidentalis	American Arborvitae	40' H x 15' W	6" Ht.	B&B	
UNDERSTORY TREES	CODE	QTY	BOTANICAL NAME	COMMON NAME	MATURE SIZE	PLANTING SIZE	ROOT COND.
AMGR	5	Amelanchier x grandiflora 'Autumn Brilliance'	Autumn Brilliance Apple Serviceberry	25' H x 25' W	2" Cal.	B&B	
COAL	7	Cornus alternifolia	Pagoda Dogwood	20' H x 25' W	1.5" Cal.	B&B	
MAPS	33	Malus x 'Pink Spires'	Pink Spires Crabapple	20' H x 12' W	1.5" Cal.	B&B	
MAXR	5	Malus x 'Royal Raindrops'	Prairiefire Crabapple	20' H x 15' W	1.5" Cal.	B&B	
PRMA	4	Prunus maackii	Amur Chokecherry	25' H x 20' W	1.5" Cal.	B&B	
SYRE	3	Syringa reticulata	Japanese Tree Lilac	20' H x 15' W	2" Cal.	B&B	

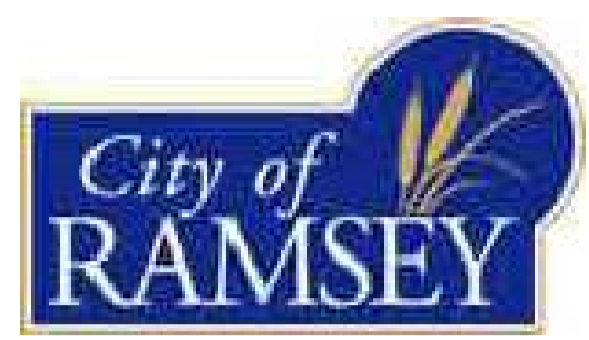
**LEGEND**

MNDOT Seed Mix 33-261  
Seed at rate of 35 lbs/acre

**DEVELOPER**

**PLATINUM LAND MN, LLC**  
5191 159TH AVE NW  
ANDOVER, MN 55304  
TEL 763-301-4550

**MUNICIPALITY**



**PROJECT**

**NORTH BROOK MEADOWS**  
RAMSEY, MINNESOTA

**ISSUE / REVISION HISTORY**

DATE	ISSUE / REVISION	REVIEW
16 JUL 2021	PRELIMINARY PLAT SUBMITTAL	CNC

**CERTIFICATION**

I hereby certify that this plan was prepared by me or under my direct supervision, and that I am a duly Licensed Landscape Architect under the laws of the State of MINNESOTA.

**PRELIMINARY NOT FOR CONSTRUCTION**

Signature shown is a digital representation of the signature of the Engineer. A signed copy of this plan on file at Landform Professional Services, Inc. is the only valid document. Please contact the Engineer to request additional documents.

**PRELIMINARY PLAT**  
07/16/2021



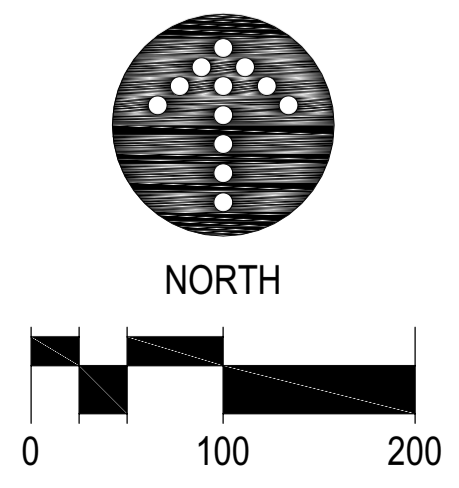
105 South Fifth Avenue  
Suite 513  
Minneapolis, MN 55401

Tel: 612-252-9070  
Fax: 612-252-9077  
Web: landform.net

FILE NAME: L201PLM001.dwg  
PROJECT NO.: PLM20001

**LANDSCAPE PLAN**  
**L2.1**

Landform "From Site to Finish" are registered service marks of Landform Professional Services, LLC.



L2.1.pdf V1 - Changemark Notes ( 2 Notes )

---

**1 - Planting Requirements**

Created by: Chris Anderson  
On: 08/11/2021 10:31 AM

The R-1 Residential (MUSA) - 80 district requires 2 trees in planted in the boulevard and/or front yard. Update the plan to show both trees in the front yard, with, preferably, at least one tree in the boulevard per lot.

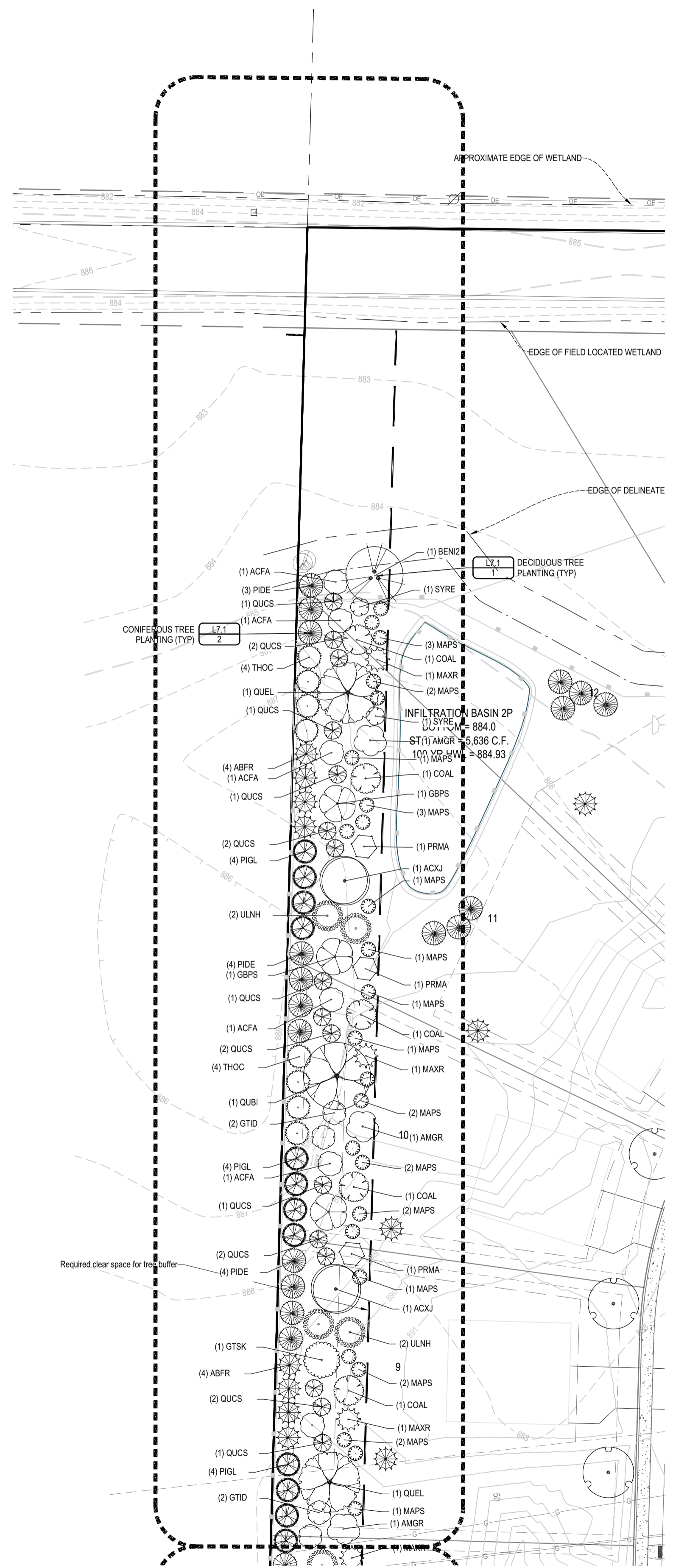
----- 0 Replies -----

**2 - Gas Line Easement**

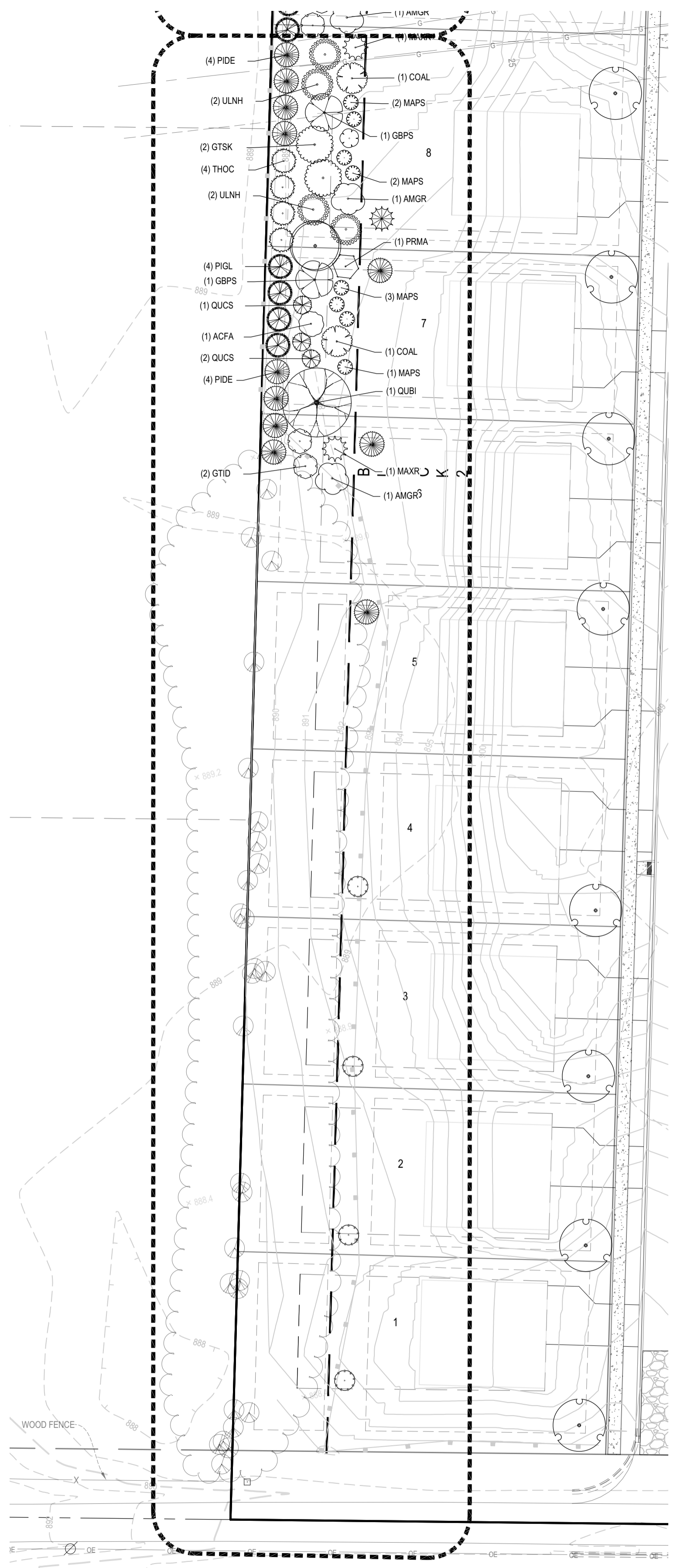
Created by: Chris Anderson  
On: 08/11/2021 10:33 AM

Need verification from Easement holder (appears to be Northern Natural Gas Company), whether any tree plantings would be permitted within easement area.

----- 0 Replies -----



**BUFFERYARD PLAN**



**BUFFERYARD PLAN**

**LANDSCAPING NOTES**

- Landscape Contractor shall visit the site prior to submitting a bid to become familiar with the site conditions.
- Contact Utility Service providers for field location of services 72 hours prior to beginning.
- Coordinate installation with Contractors performing related work.
- Plant material shall conform to the American Association of Nurserymen Standards and be of hardy stock, free from disease, infestation, damage, and disfigurement. For discrepancy between the number of plants on the Schedule and the number shown on the Drawing, the Drawing shall govern.
- All existing deciduous and coniferous trees are to be trimmed of dead wood and pruned to a natural uniform shape.
- Planting soil shall consist of 4 parts topsoil to 1 part peat humus, with 3 pounds of commercial fertilizer added per cubic yard.
- Spread a minimum of 4 inches of topsoil and sod all turf areas disturbed by Construction.
- See Details for depth of planting soil.
- Follow current MNDOT Seeding Manual for planting instructions for establishment of native seed and provide coordination for required erosion prevention and sediment control.
- Native seeds shall be of Minnesota origin and certified by the Minnesota Crop Improvement Association (MCIA). Provide verifying documentation to the Owner 30 days minimum prior to installation.
- Per City Ordinance all dead or injured plant materials must be replaced at the end of the second growing season.
- Quantities are for this plan sheet only. See sheet L2.1 for overall quantities for design. If there is a discrepancy between the plan and the plant schedule, the plan shall govern.

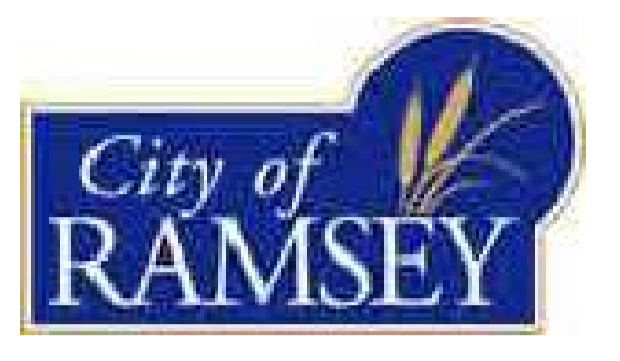
**PLANTING SCHEDULE**

DECIDUOUS TREES	CODE	QTY	BOTANICAL NAME	COMMON NAME	MATURE SIZE	PLANTING SIZE	ROOT COND.
	ACFA	7	Acer x freemanii 'Armstrong'	Armstrong Freeman Maple	60' H x 15' W	2" Cal.	B&B
	ACXJ	3	Acer x freemanii 'Jeffersred'	Autumn Blaze Maple	60' H x 40' W	2" Cal.	B&B
	BENI2	1	Betula nigra 'BNMTF'™	Dura Heat River Birch	60' H x 50' W	2" Cal.	B&B
	GBPS	5	Ginkgo biloba 'Princeton Sentry'	Princeton Sentry Ginkgo	40' H x 30' W	2" Cal.	B&B
	GTID	6	Gleditsia triacanthos inermis 'Draves'™	Street Keeper Honey Locust	45' H x 20' W	2" Cal.	B&B
	GTSK	3	Gleditsia triacanthos 'Skyline'	Skyline Honeylocust	40' H x 30' W	2" Cal.	B&B
	QUBI	2	Quercus bicolor	Swamp White Oak	55' H x 55' W	2" Cal.	B&B
	QUEL	2	Quercus ellipsoidalis	Northern Pin Oak	60' H x 50' W	2" Cal.	B&B
	QUCS	19	Quercus 'Crimson Spire'	Crimson Spire Oak	50' H x 15' W	2" Cal.	B&B
	ULNH	8	Ulmus x 'New Horizon'	New Horizon Elm	35' H x 25' W	2" Cal.	B&B
EVERGREEN TREES	CODE	QTY	BOTANICAL NAME	COMMON NAME	MATURE SIZE	PLANTING SIZE	ROOT COND.
	ABFR	8	Abies fraseri	Fraser Fir	30' H x 20' W	6" HL	B&B
	PIGL	16	Picea glauca	White Spruce	50' H x 20' W	6" HL	B&B
	PIDE	19	Picea glauca 'Densata'	Black Hills Spruce	45' H x 20' W	6" HL	B&B
	THOC	12	Thuja occidentalis	American Arborvitae	40' H x 15' W	6" HL	B&B
UNDERSTORY TREES	CODE	QTY	BOTANICAL NAME	COMMON NAME	MATURE SIZE	PLANTING SIZE	ROOT COND.
	AMGR	5	Amelanchier x grandiflora 'Autumn Brilliance'	Autumn Brilliance Apple Serviceberry	25' H x 25' W	2" Cal.	B&B
	COAL	7	Cornus alternifolia	Pagoda Dogwood	20' H x 25' W	1.5" Cal	B&B
	MAPS	33	Malus x 'Pink Spires'	Pink Spires Crabapple	20' H x 12' W	1.5" Cal	B&B
	MAXR	5	Malus x 'Royal Raindrops'	Prairiefire Crabapple	20' H x 15' W	1.5" Cal	B&B
	PRMA	4	Prunus maackii	Amur Chokecherry	25' H x 20' W	1.5" Cal	B&B
	SYRE	3	Syringa reticulata	Japanese Tree Lilac	20' H x 15' W	2" Cal.	B&B

**DEVELOPER**

**PLATINUM LAND MN, LLC**  
 5191 159TH AVE NW  
 ANDOVER, MN 55304  
 TEL 763-301-4550

**MUNICIPALITY**



**PROJECT**

**NORTH BROOK MEADOWS**  
 RAMSEY, MINNESOTA

**ISSUE / REVISION HISTORY**

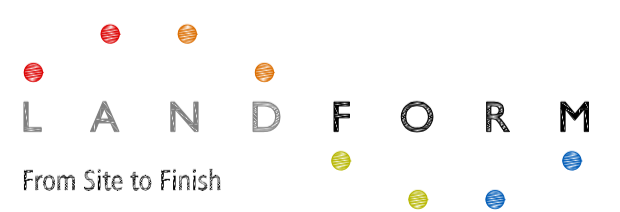
DATE	ISSUE / REVISION	REVIEW
16 JUL 2021	PRELIMINARY PLAT SUBMITTAL	CNC

**CERTIFICATION**

I hereby certify that this plan was prepared by me or under my direct supervision, and that I am a duly Licensed Landscape Architect under the laws of the State of MINNESOTA.  
 Joshua M. [Signature]  
 License No: 4440

IF THE SIGNATURE, SEAL OR FOUR LINES DIRECTLY ABOVE ARE NOT VISIBLE, THIS SHEET HAS BEEN REPRODUCED BEYOND INTENDED READABILITY AND IS NO LONGER A VALID DOCUMENT. PLEASE CONTACT THE ENGINEER TO REQUEST ADDITIONAL DOCUMENTS.

**PRELIMINARY PLAT**  
 07/16/2021



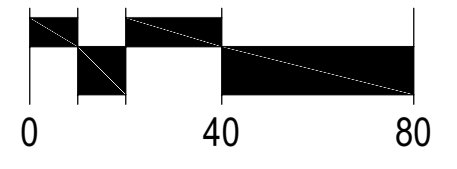
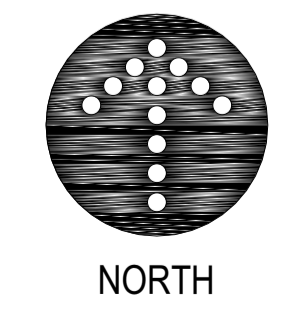
105 South Fifth Avenue Tel: 612-252-9070  
 Suite 513 Fax: 612-252-9077  
 Minneapolis, MN 55401 Web: landform.net

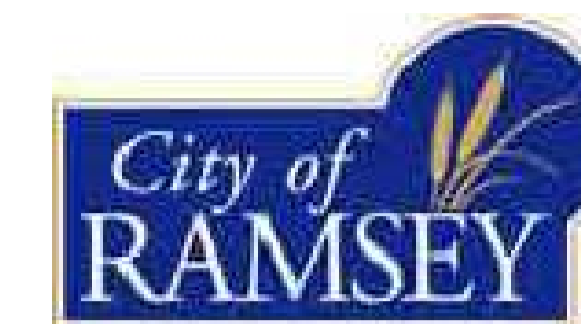
FILE NAME L202PLM001.dwg  
 PROJECT NO. PLM20001

**LANDSCAPE BUFFERYARD**  
**L2.2**

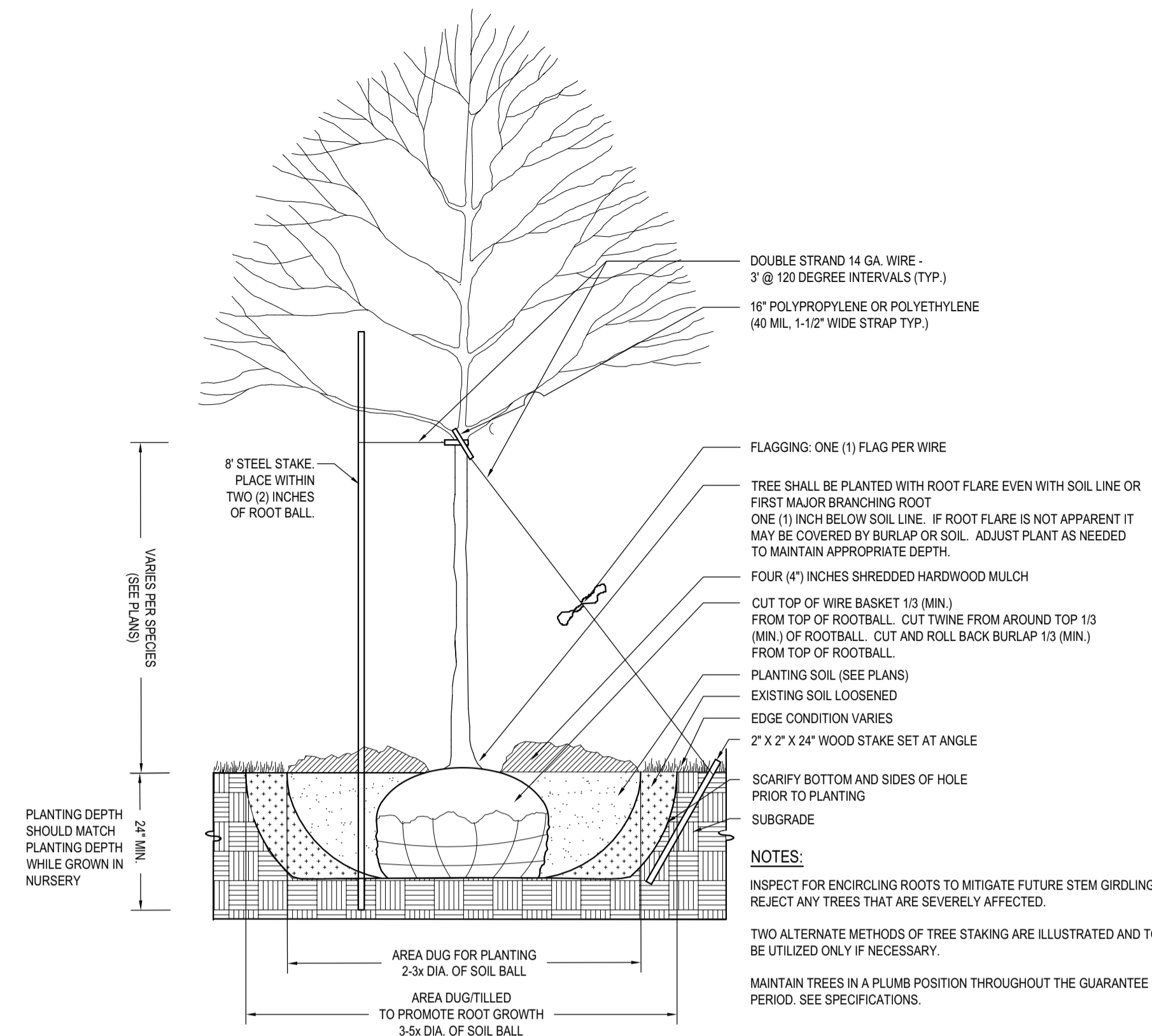


**Know what's Below.**  
**Call before you dig.**



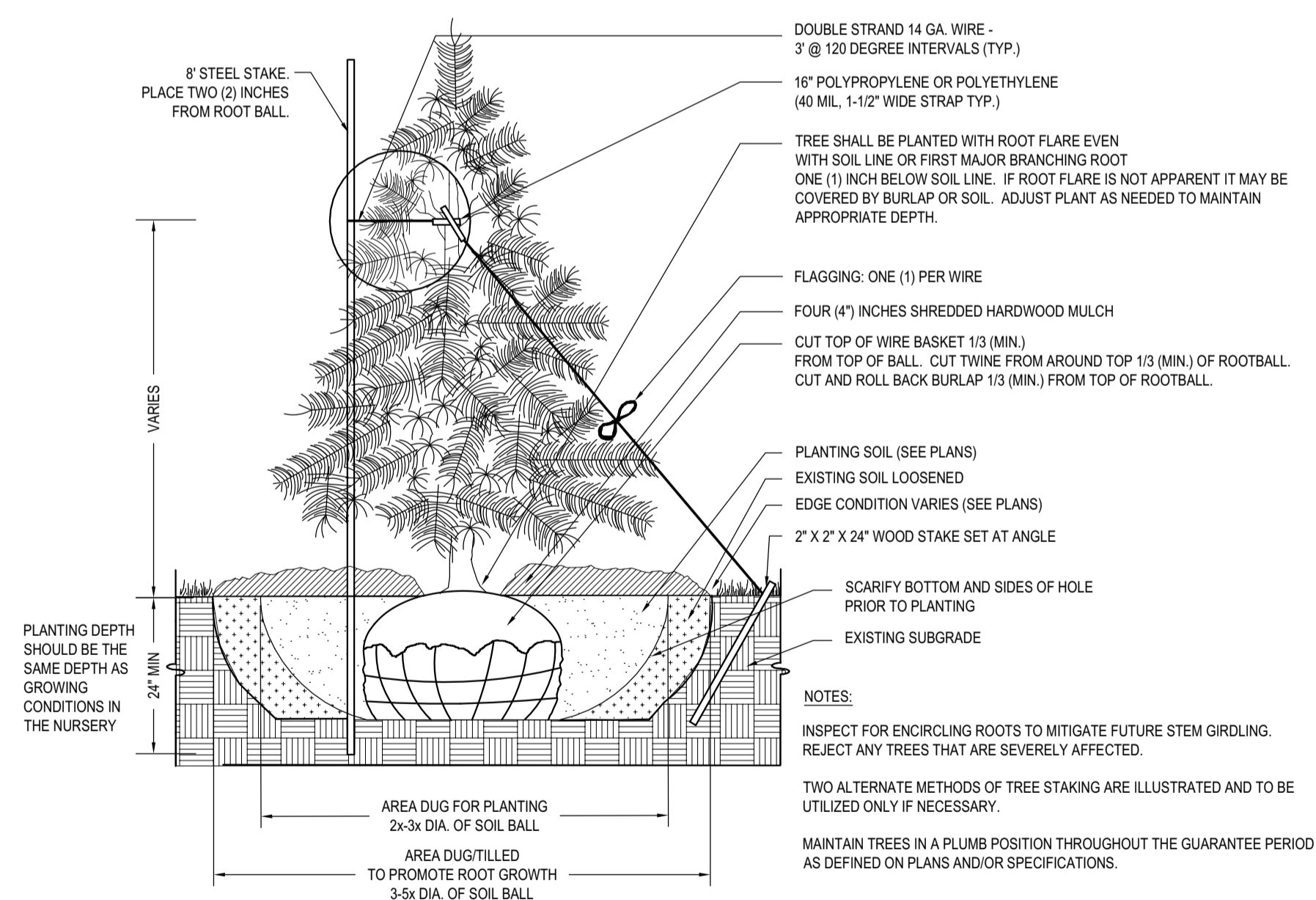


DATE	ISSUE / REVISION	REVIEW
16 JUL 2021	PRELIMINARY PLAT SUBMITTAL	CNC



DECIDUOUS TREE PLANTING

NO SCALE



CONIFEROUS TREE PLANTING

NO SCALE

I hereby certify that this plan was prepared by me or under my direct supervision, and that I am a duly Licensed Landscape Architect under the laws of the State of Minnesota.

Joshua M. [Signature]  
License No: 444

Signature shown is a digital representation of the original signed copy of this plan on file at Landform Professional Services, Inc. A physical signed copy is available upon request.

IF THE SIGNATURE, SEAL OR FOUR LINES DIRECTLY ABOVE ARE NOT VISIBLE, THIS SHEET HAS BEEN REPRODUCED BEYOND INTENDED READABILITY AND IS NO LONGER A VALID DOCUMENT. PLEASE CONTACT THE ENGINEER TO REQUEST ADDITIONAL DOCUMENTS.

PRELIMINARY PLAT  
07/16/2021



105 South Fifth Avenue Tel: 612-252-9070  
Suite 513 Fax: 612-252-9077  
Minneapolis, MN 55401 Web: landform.net

FILE NAME L701PLM001.dwg

PROJECT NO. PLM20001



Know what's Below.  
Call before you dig.

