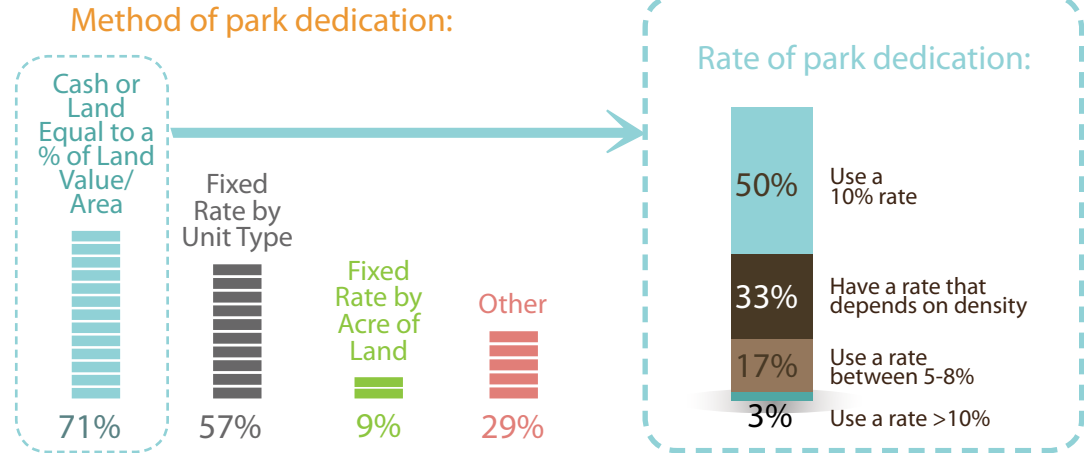


2019 Park Finance and Dedication Survey Factsheet

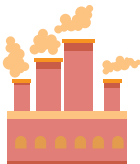
For more than a decade, HKGi has been conducting a park dedication survey to identify best practices for park dedication and financing, as well as to inform the development of park and recreation system master plans. The Park Finance and Dedication Survey has also been a useful tool for understanding the implications of the statutory changes over time. In 2019, the survey was sent to park and community development staff of Minnesota cities and counties. An overview of the results from the 65 participants is provided in this summary. The results are based on the number of respondents to each individual question rather than the overall number of surveys submitted.

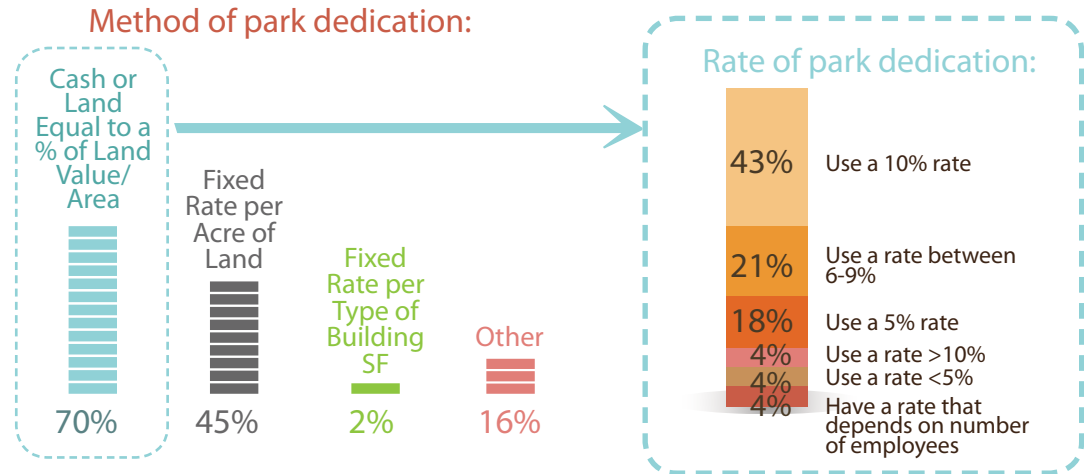
Residential Park Dedication is required:

 by **89%** of participants

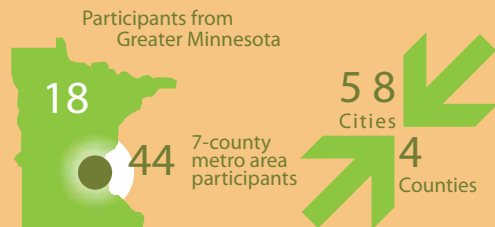


Commercial/Industrial Park Dedication is required:

 by **75%** of participants

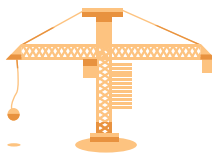


Who Participated?

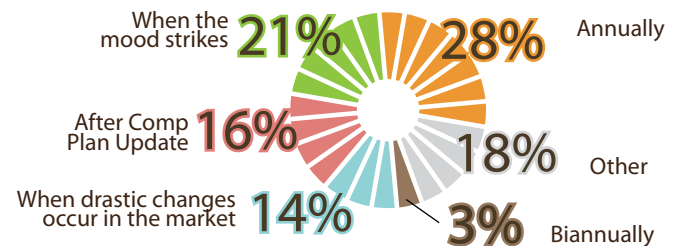


Note: In the survey respondents could select all that applied

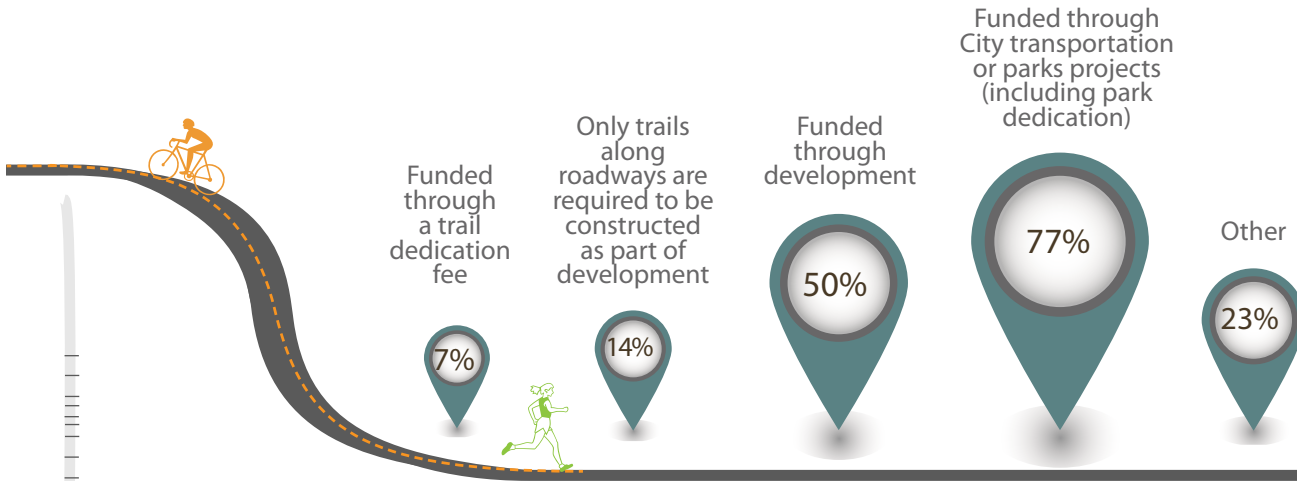
Redevelopment Park Dedication is required:

 by **31%** of participants

Respondents evaluate their park dedication requirements at varying intervals:

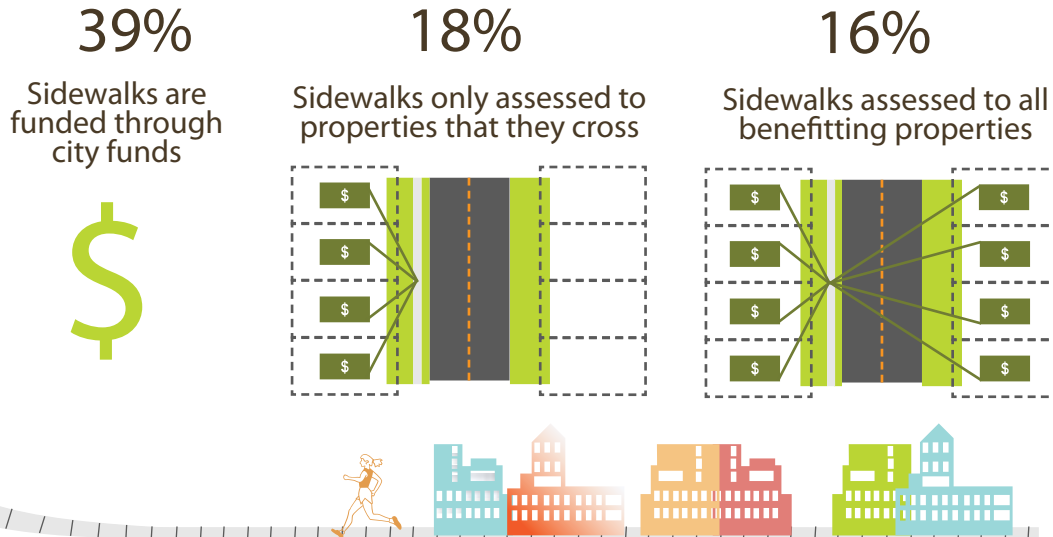


Funding for Trail Construction

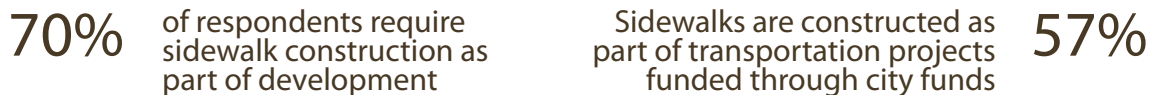


Funding for Sidewalk Construction

Retrofits through street improvement projects:



New construction sidewalk projects:



For more Information

If you have more questions or are wondering about next steps, HKGi's professional services include:

- Park Dedication Evaluation and Ordinance Revisions
- Park and Recreation System Planning
- Park and Trail Design



Find more detailed survey responses on HKGi's website:

<https://www.hkgi.com/projects.php>

