

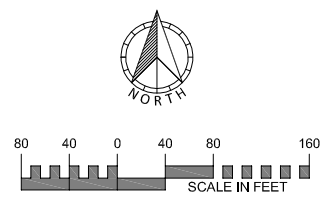
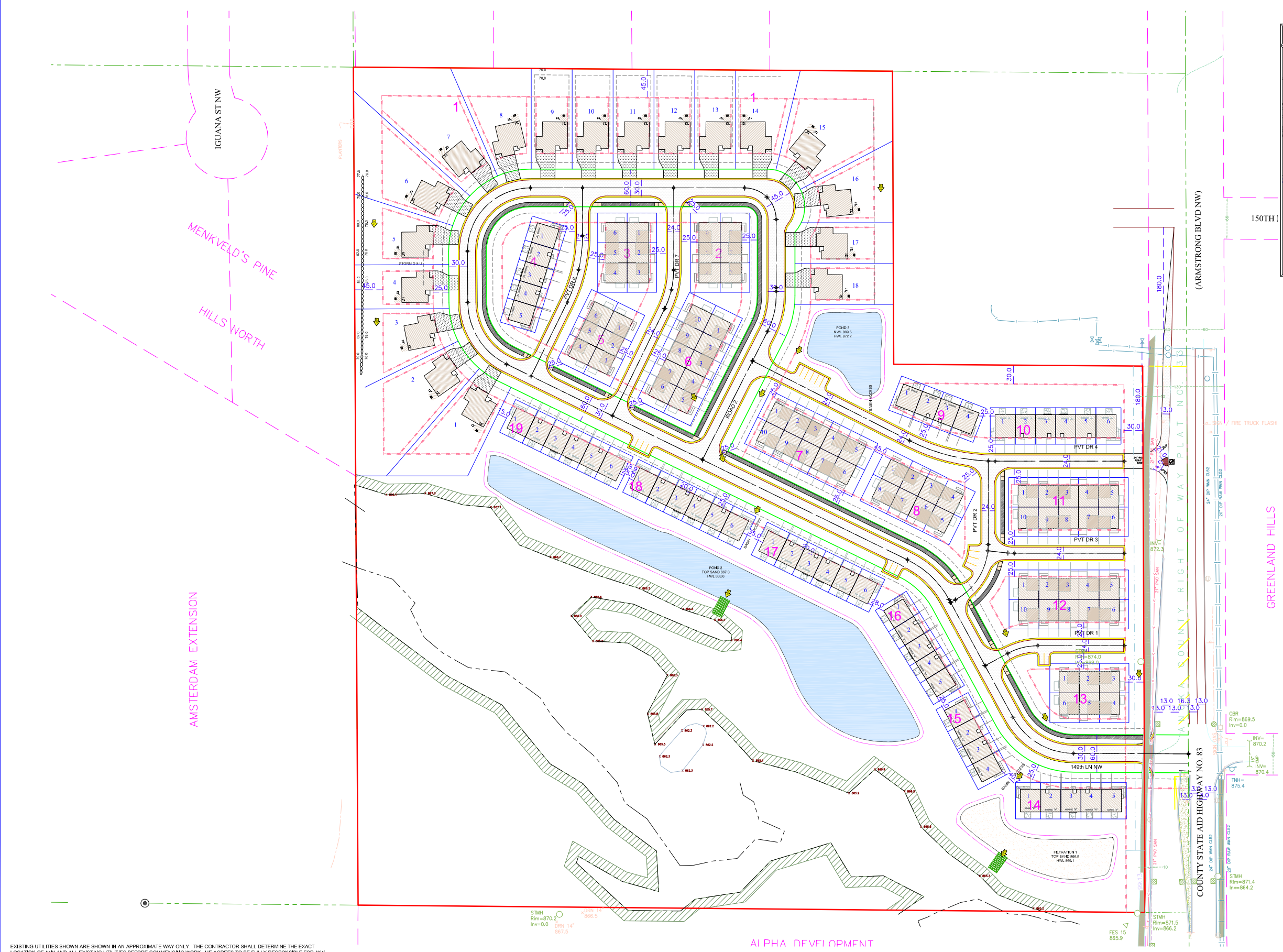
SHEET INDEX TABLE	
SHEET	Description
SP	Site Plan
ALTA	ALTA Survey
PP	Preliminary Plat
ST	Preliminary Street Plan
UP	Preliminary Utility Plan
GP	Preliminary Grading Plan
EC	Preliminary Erosion Control Plan
L	Landscape Plan
TS	Tree Survey

Notes:
 Public Street ROW: 60ft
 Public Street Width: 30ft Back to Back
 Private Street Width: 24ft Back to Back

Lots: 18 Single Family Lots
 Minimum Lot Width: 65ft
 Front Yard Setback: 25ft
 Side Yard Setback: 7.5ft/7.5ft
 Side Yard Setback Corner Lot: 15ft
 Rear Yard Setback: 20ft

119 Townhome Units
 Front Yard Setback: 25ft (Front Door)
 Side Yard Setback: 25ft (Building to Building)
 Rear Yard Setback: 30ft

PREPARED BY	PREPARED FOR
ENGINEER SATHRE-BERGQUIST, INC. 150 SOUTH BROADWAY WAYZATA, MINNESOTA 55391 PHONE: (952) 476-6000 FAX: (952) 476-0104 CONTACT: CHARLIE WIEMERSLAGE, P.E. EMAIL: CWIEMERSLAGE@SATHRE.COM	DEVELOPER LENNAR 16305 36TH AVE N, SUITE 600 PLYMOUTH, MN 55446 CONTACT: JOE JABLONSKI PHONE: (952) 249-3014 EMAIL: JOE.JABLONSKI@LENNAR.COM PAUL TABONE PHONE: (952) 249-3086 EMAIL: PAUL.TABONE@LENNAR.COM



EXISTING UTILITIES SHOWN ARE SHOWN IN AN APPROXIMATE WAY ONLY. THE CONTRACTOR SHALL DETERMINE THE EXACT LOCATION OF ANY AND ALL EXISTING UTILITIES BEFORE COMMENCING WORK. HE AGREES TO BE FULLY RESPONSIBLE FOR ANY AND ALL DAMAGES ARISING OUT OF HIS FAILURE TO EXACTLY LOCATE AND PRESERVE ANY AND ALL EXISTING UTILITIES.

DRAWING NAME	NO.	BY	DATE	REVISIONS
TI				
DRAWN BY		CAW		
CHECKED BY		RSM		
DATE			07/16/21	

USE (INCLUDING COPYING, DISTRIBUTION, AND/OR CONVEYANCE OF INFORMATION) OF THIS PRODUCT IS STRICTLY PROHIBITED WITHOUT SATHRE-BERGQUIST, INC.'S EXPRESS WRITTEN AUTHORIZATION. USE WITHOUT SAID AUTHORIZATION CONSTITUTES AN ILLEGITIMATE USE AND SHALL THEREBY INDEMNIFY SATHRE-BERGQUIST, INC. OF ALL RESPONSIBILITY. SATHRE-BERGQUIST, INC. RESERVES THE RIGHT TO HOLD ANY ILLEGITIMATE USER OR PARTY LEGALLY RESPONSIBLE FOR DAMAGES OR LOSSES RESULTING FROM ILLEGITIMATE USE.

I HEREBY CERTIFY THAT THIS PLAN OR SPECIFICATION WAS PREPARED BY ME OR UNDER MY DIRECT SUPERVISION AND THAT I AM A DULY REGISTERED PROFESSIONAL ENGINEER UNDER THE LAWS OF THE STATE OF MINNESOTA.

Charles A. Wiemerslage
 CHARLES A. WIEMERSLAGE, P.E.
 Date: 07/16/21 Lic. No. 49180

ENGINEERS SURVEYORS
DESIGNERS PLANNERS

SATHRE-BERGQUIST, INC.
 150 SOUTH BROADWAY WAYZATA, MN. 55391 (952) 476-6000

CITY PROJECT NO.

RAMSEY, MINNESOTA

PRELIMINARY SITE PLAN

LYNWOOD LENNAR

FILE NO. 5401-686

SP
SP