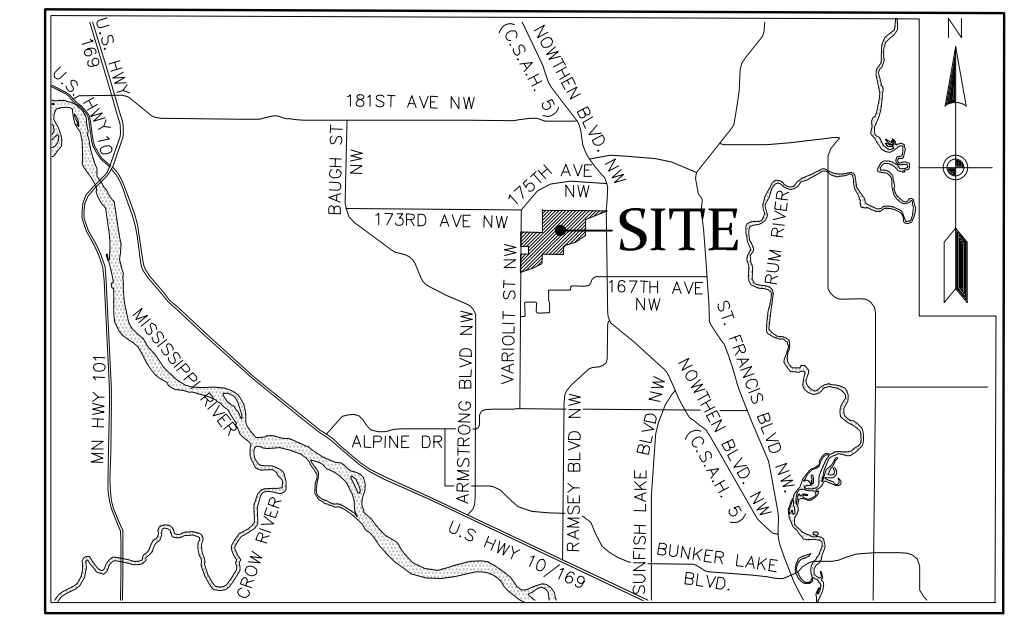


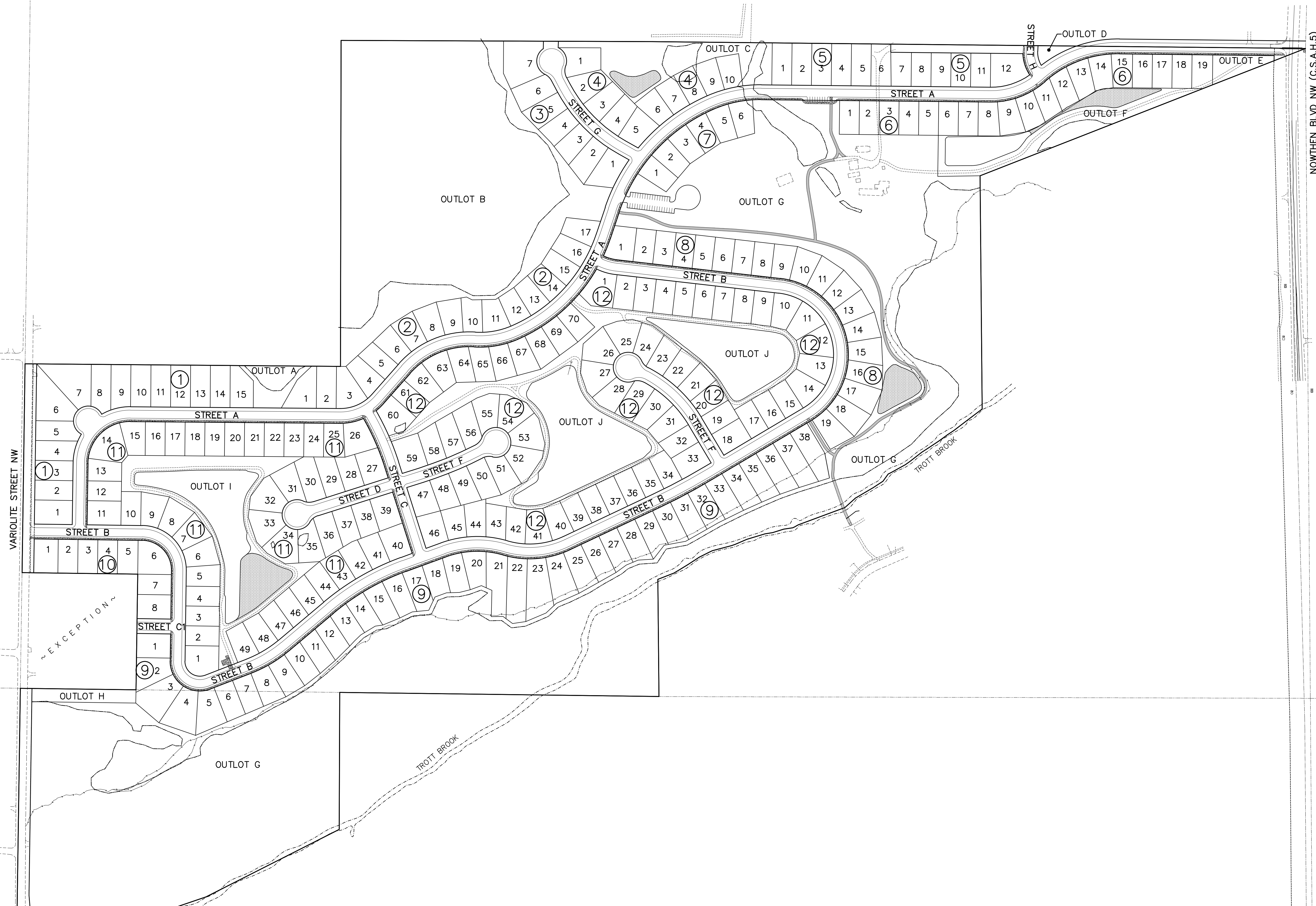
TROTT BROOK CROSSING

RAMSEY, MINNESOTA

VICINITY MAP

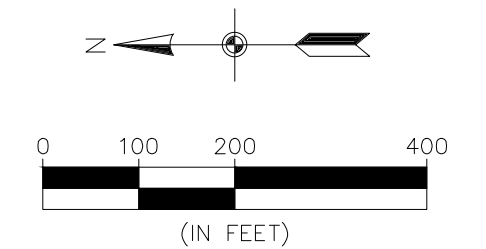


NOT TO SCALE



SHEET INDEX

- 1. COVER
- 2. EXISTING CONDITIONS (OVERALL)
- 3-5. EXISTING CONDITIONS
- 6. PRELIMINARY PLAT INDEX
- 7-15. PRELIMINARY PLAT
- 16. PRELIMINARY SITE & UTILITY INDEX
- 17-19. PRELIMINARY SITE & UTILITY PLAN
- 20. GRADING INDEX
- 21-29. PRELIMINARY GRADING & EROSION CONTROL PLANS
- 30-31. DETAILS
- 32. PAD ELEVATION TABLES
- 33. RETAINING WALL PROFILES
- L1-L4. LANDSCAPE PLANS
- T1-T11. TREE PRESERVATION PLAN
- T12. PLANTED WOODLAND REMOVAL EXHIBIT



BENCHMARKS	
1. Anoka County Benchmark No. 3077 - Elevation 901.84 ft. (NAVD88)	
2. Anoka County Benchmark No. 3078 - Elevation 867.97 ft. (NAVD88)	

CALL BEFORE YOU DIG

Know what's below.
Call before you dig.

The subsurface utility information shown on this plan is utility Quality Level D. This quality level was determined according to the guidelines of CI/ASCE 38-02, entitled "Standard Guideline for the Collection and Depiction of Existing Subsurface Utility Data."

CARLSON McCAIN
ENGINEERING SURVEYING ENVIRONMENTAL
3890 PHEASANT RIDGE DR NE SUITE 100 BLAINE, MN 55449 TEL 763.489.7900 FAX 763.489.7959 CARLSONMCCAIN.COM

I hereby certify that this plan, specification or report was prepared by me or under my direct supervision and that I am a duly Licensed Professional Engineer under the laws of the State of Minnesota

Print Name: Brian J. Krystofiak, P.E.
Signature: *Brian J. Krystofiak*
Date: 9/23/21 License #: 25063

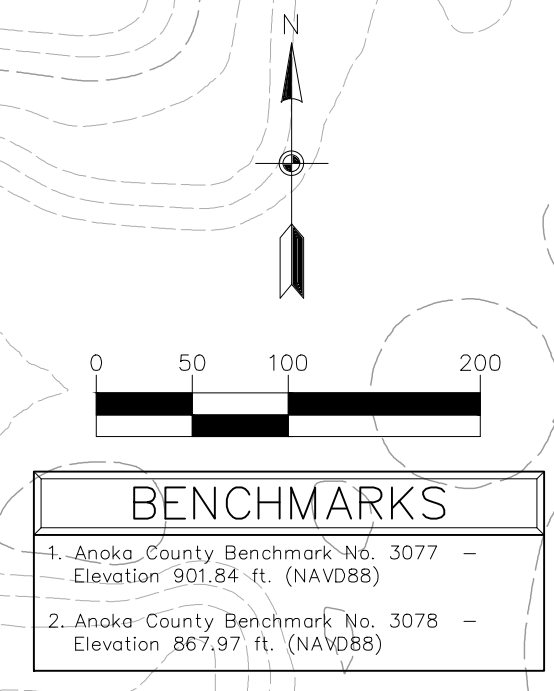
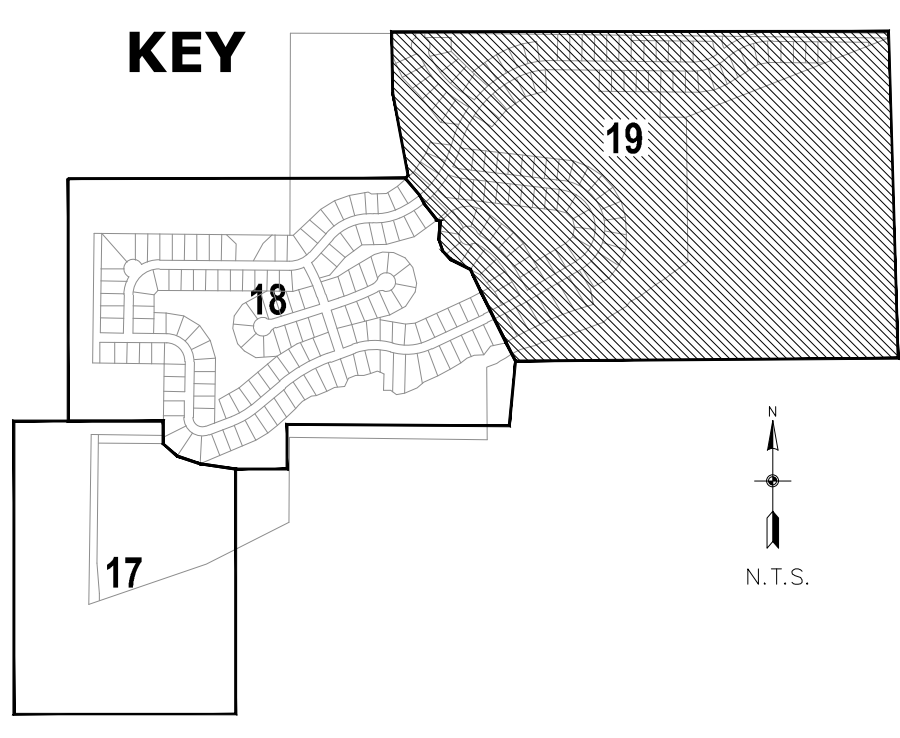
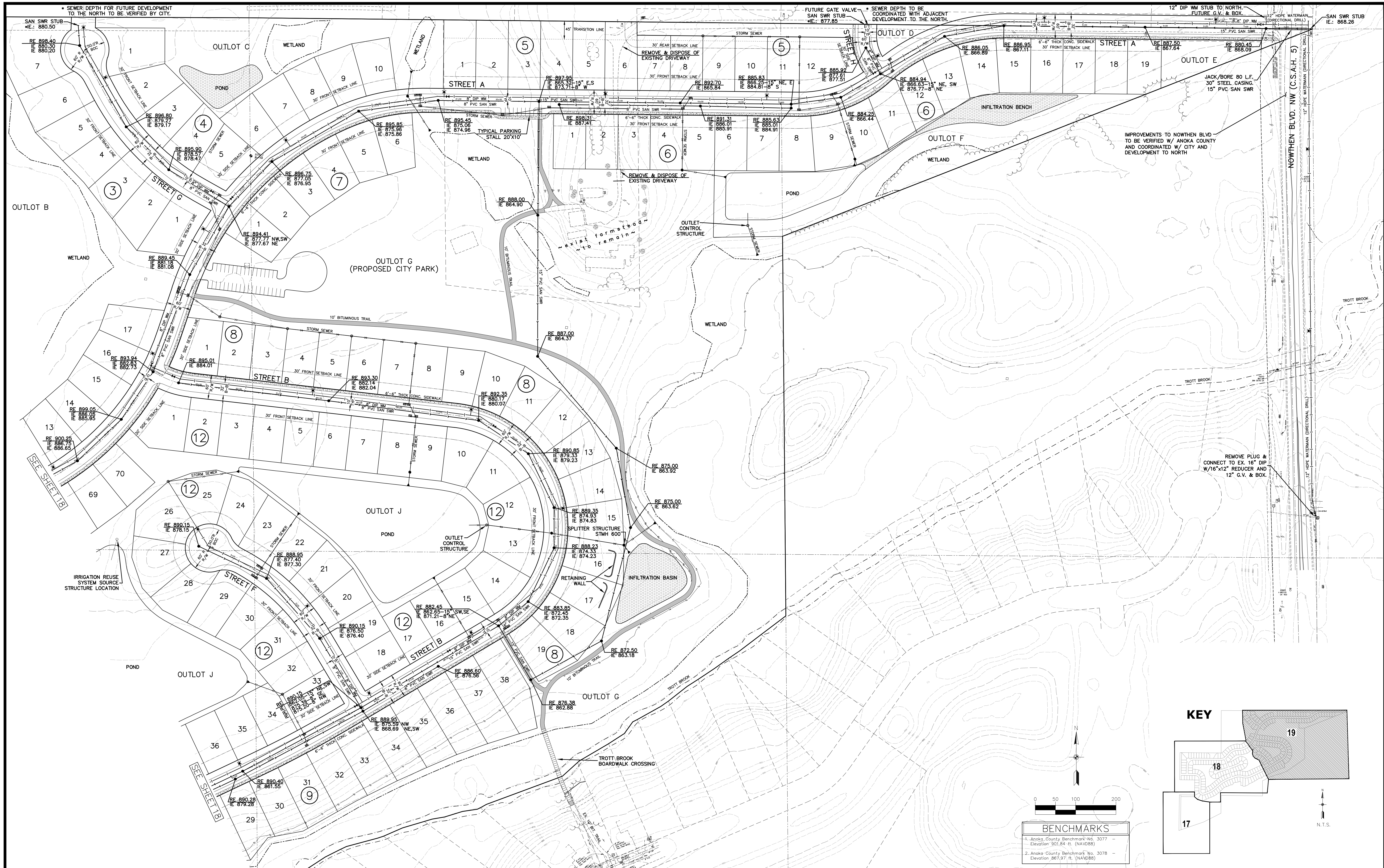
Drawn: JJO
Designed: BJK
Date: 9/23/21

Revisions:
1.

SOTARRA, LLC
(TEG LAND HOLDINGS, LLC.)
1660 Hwy 100 South, Suite 400
St. Louis Park, Minnesota 55416

TROTT BROOK CROSSING
Ramsey, Minnesota

COVER



CARLSON McCAIN
ENGINEERING SURVEYING ENVIRONMENTAL

3890 PHEASANT RIDGE DR NE
SUITE 100
BLAINE, MN 55449
TEL 763.489.7900
FAX 763.489.7959
CARLSONMCCAIN.COM

I hereby certify that this plan, specification or report was prepared by me or under my direct supervision and that I am a duly Licensed Professional Engineer under the laws of the State of Minnesota

Print Name: Brian J. Krystofiak, P.E.
Signature: *Brian J. Krystofiak*
Date: 9/23/21 License #: 25063

Drawn: JJO
Designed: BJK
Date: 9/23/21

Revisions: 1.

SOTARRA, LLC
(TEG LAND HOLDINGS, LLC.)
1660 Hwy 100 South, Suite 400
St. Louis Park, Minnesota 55416

TROTT BROOK CROSSING
Ramsey, Minnesota

PRELIMINARY SITE & UTILITY PLAN