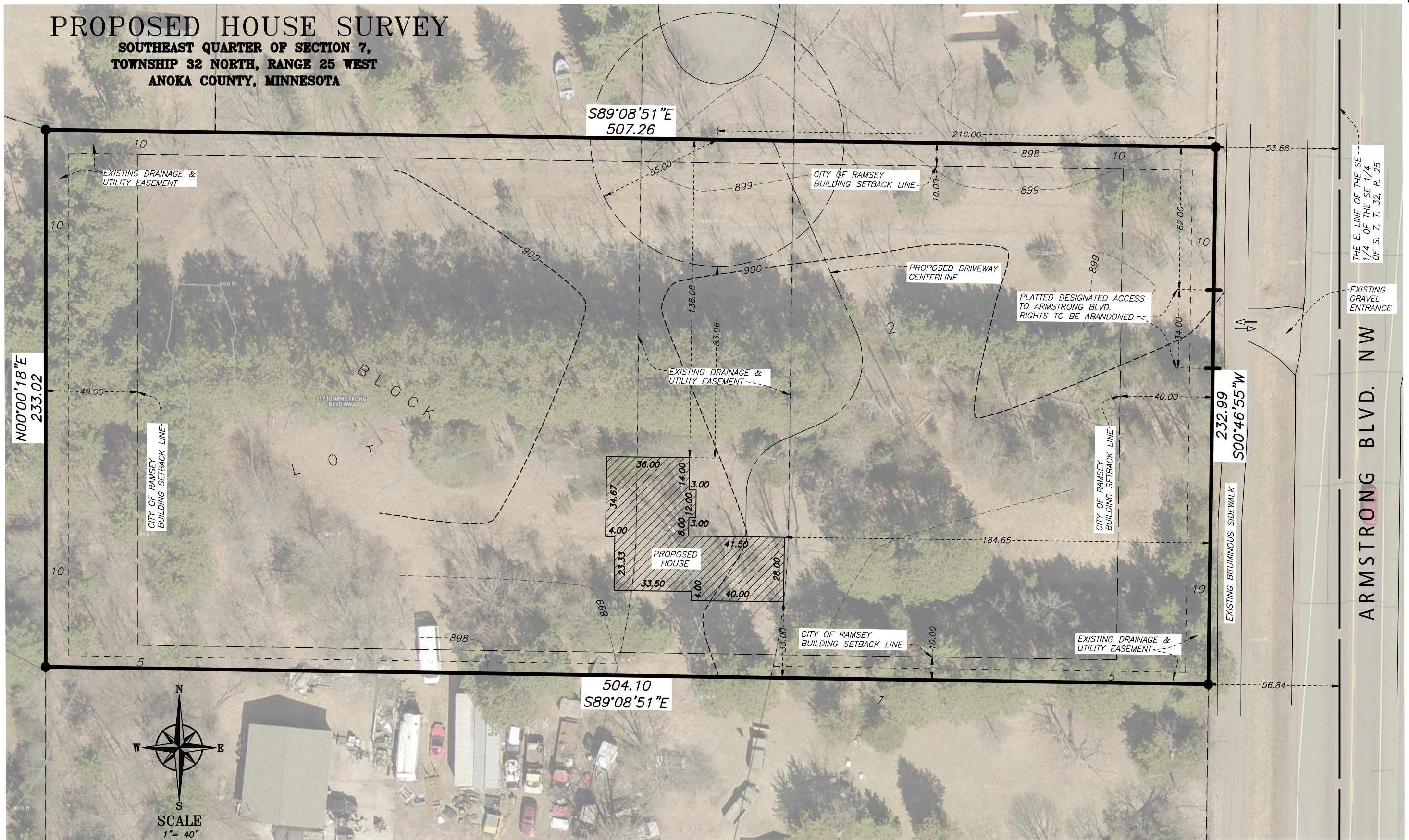


**PROPOSED HOUSE SURVEY**  
**SOUTHEAST QUARTER OF SECTION 7,**  
**TOWNSHIP 32 NORTH, RANGE 25 WEST**  
**ANOKA COUNTY, MINNESOTA**



N00°00'18"E  
233.02

S89°08'51"E  
507.26

504.10  
S89°08'51"E

232.99  
S00°46'55"W



BEARINGS ARE BASED ON NAD83(2011)  
ANOKA COUNTY COORDINATE SYSTEM



EDUARD KAPAYGORODSKIY  
 157301 ARMSTRONG  
 BOULEVARD NW  
 RAMSEY, MN

JOB#: 20404 DRAWN BY: TS  
 FILENAME: 20404.dwg DATE: 11/13/2020

REV#	DESCRIPTION	DATE