

Filename: CULLINAN RIGGING ADDITION II\CULLINAN RIGGING ADDITION II-A1

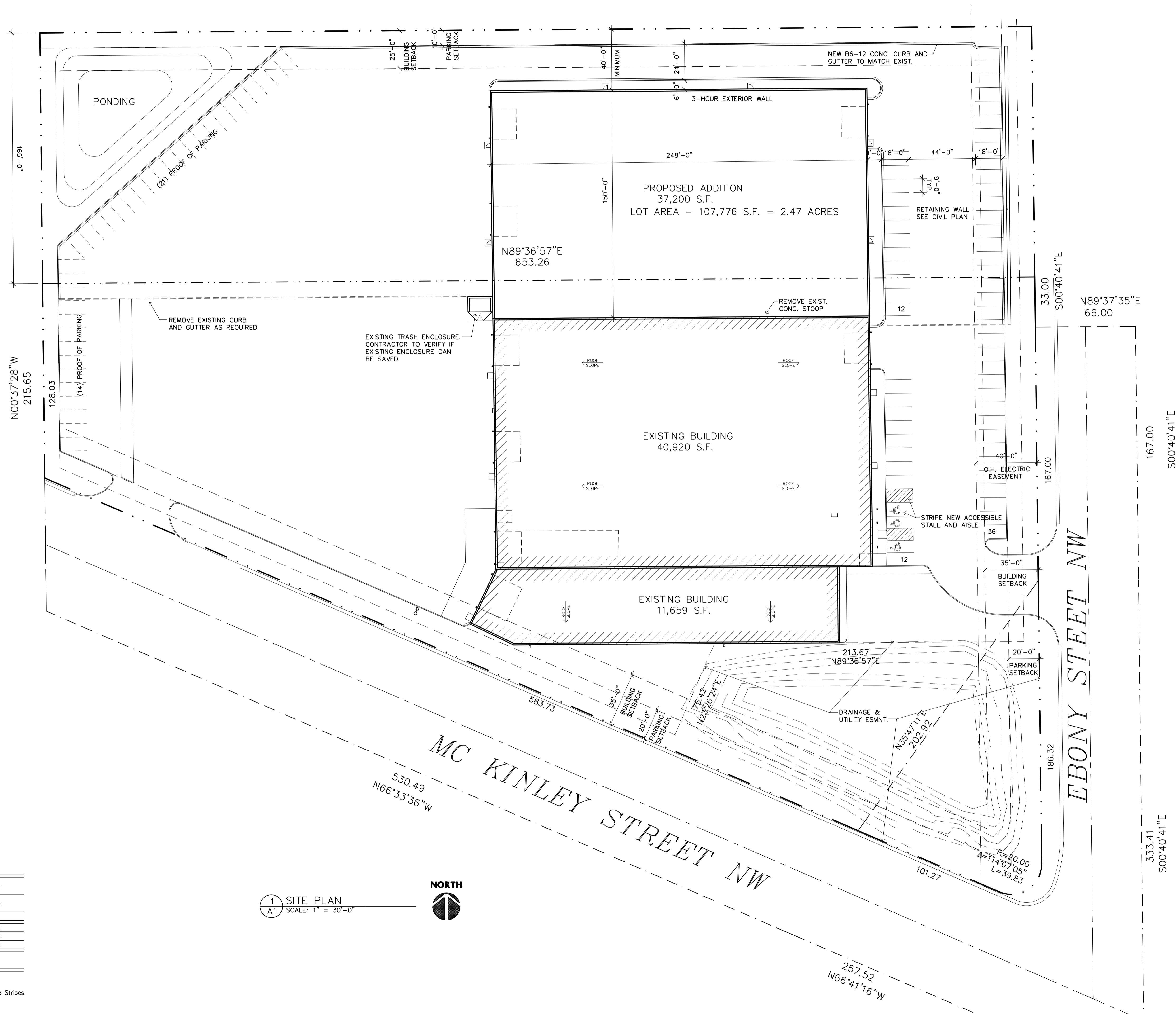
SITE DATA

EXIST. LOT	- 177,892 S.F.	4.08 ACRES
LOT ADDITION	- 107,776 S.F.	2.47 ACRES
TOTAL SIZE	- 285,668 S.F.	6.55 ACRES
EXIST. BLDG	- 52,579 S.F.	
BLDG. ADDITION	- 37,200 S.F.	
TOTAL SIZE	- 89,779 S.F.	

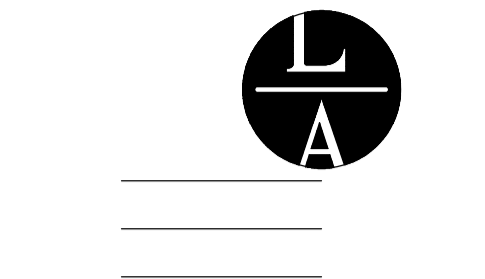
PARKING DATA

OFFICE	2,112 s.f. At 1/300 s.f.	7 Stalls
INDUSTRIAL	87,667 s.f. At 1/1,000 s.f.	88 Stalls
Total Stalls Required		95 Stalls
Total Stalls Provided		60 Stalls
Total Proof Of Parking		35 Stalls
Accessible Requirement Per 60 Stalls (IBC Table 1106.1)		3 Stalls

2. Stall Size - 9'-0" x 18'-0" 3. Aisle Size - 24'-0" 4. Striping - 4" White Stripes



1 SITE PLAN
A1 SCALE: 1" = 30'-0"



LAMPERT ARCHITECTS
420 Summit Avenue
St. Paul, MN 55102
Phone: 763.755.1211 Fax: 763.757.2849
lampert@lampert-arch.com

ARCHITECT CERTIFICATION:
I HEREBY CERTIFY THAT THIS PLAN, SPECIFICATION OR REPORT WAS PREPARED BY ME OR UNDER MY DIRECT SUPERVISION AND THAT I AM A DULY LICENSED ARCHITECT UNDER THE LAWS OF THE STATE OF MINNESOTA.

PRELIMINARY NOT FOR CONSTRUCTION

Sharp & Associates, LLC
500 Bunker Lake Blvd
Anoka, MN 55303
Ph (763) 425-2002
Fax (763) 425-6428

CULLINAN RIGGING ADDITION II
6815 McKinley St NW, Ramsey, MN

Copyright 2021
Leonard Lampert Architects Inc.
Project Designer: JAMES B
Drawn By: JRB
Checked By: LL

Revisions

7/6/21	PRELIMINARY
9/29/21	CITY SUBMITTAL

SITE PLAN

Sheet Number

A1

Project No. 210518-3