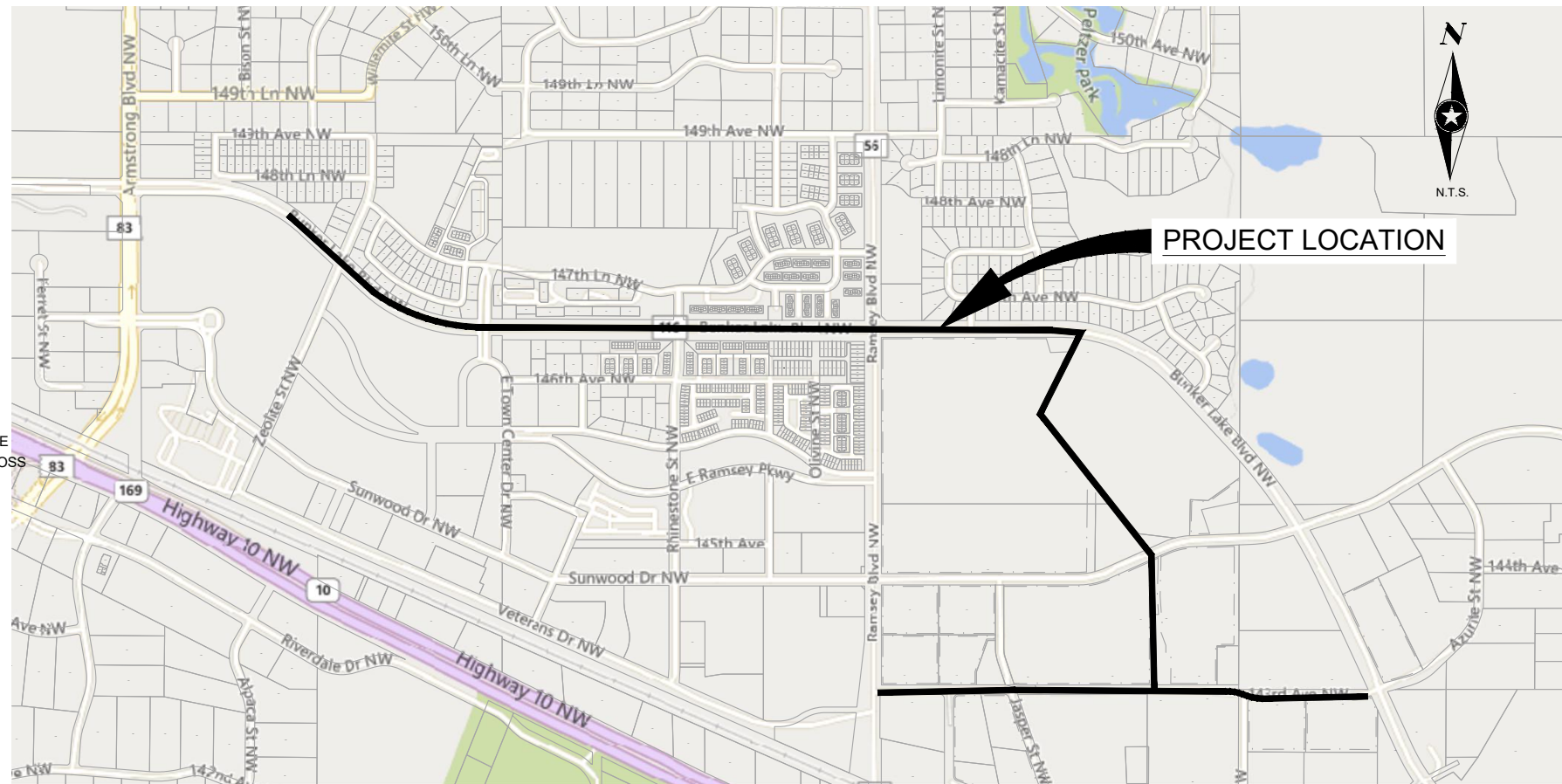


CITY OF RAMSEY, MINNESOTA

CONSTRUCTION PLANS FOR

WATER MAIN INSTALLATION, EXCAVATION, HORIZONTAL DIRECTIONAL DRILLING, GRADING, BITUMINOUS PAVING, & RESTORATION WATER TREATMENT PLANT TRUNK WATER MAIN IMPROVEMENTS

CITY PROJECT NO. 21-08



GOVERNING SPECIFICATIONS
THE 2020 EDITION OF THE MINNESOTA DEPARTMENT OF TRANSPORTATION "STANDARD SPECIFICATIONS FOR CONSTRUCTION" SHALL GOVERN EXCEPT AS MODIFIED BY THE SPECIFICATIONS FOR THIS PROJECT.

ALL TRAFFIC CONTROL DEVICES SHALL CONFORM TO THE LATEST EDITION OF THE MINNESOTA MANUAL ON UNIFORM TRAFFIC CONTROL DEVICES, INCLUDING THE LATEST FIELD MANUAL FOR TEMPORARY TRAFFIC CONTROL ZONE LAYOUTS.

INDEX

SHEET NO.	DESCRIPTION
1	TITLE SHEET
2	PROJECT OVERVIEW
3	CONSTRUCTION NOTES
4-7	DETAILS
8-15	REMOVAL PLAN
16-30	WATER MAIN PLAN AND PROFILE
31	COTTONWOOD TRAIL PLAN AND PROFILE
32-39	EROSION CONTROL AND TURF ESTABLISHMENT
40-41	SWPPP
42-44	TRAFFIC CONTROL PLAN
45	PAVEMENT MARKING AND SIGNING PLAN

THIS PLAN CONTAINS 45 SHEETS.

PROJECT LOCATION



RAMSEY, MINNESOTA

SEH
PHONE: 651.490.2000
3535 VADNAIS CENTER DRIVE
ST. PAUL, MN 55110-5196
www.sehinc.com

I HEREBY CERTIFY THAT THIS PLAN WAS PREPARED BY ME OR UNDER MY DIRECT SUPERVISION AND THAT I AM A DULY LICENSED PROFESSIONAL ENGINEER UNDER THE LAWS OF THE STATE OF MN.

Stephen R. Prall
Signature
Stephen R. Prall

Date: 10-01-2021 Lic. No. 54949

FILE NO.

Ramsy159783

1

of 45

NOTE:
THE SUBSURFACE UTILITY QUALITY INFORMATION IN THIS PLAN IS LEVEL D. THIS UTILITY QUALITY LEVEL WAS DETERMINED ACCORDING TO THE GUIDELINES OF CI/ASCE 38-02 ENTITLED "STANDARD GUIDELINES FOR THE COLLECTION AND DEPICTION OF EXISTING SUBSURFACE UTILITY DATA."

THE CONTRACTOR SHALL CALL THE GOPHER STATE ONE CALL SYSTEM AT 811 BEFORE COMMENCING EXCAVATION.



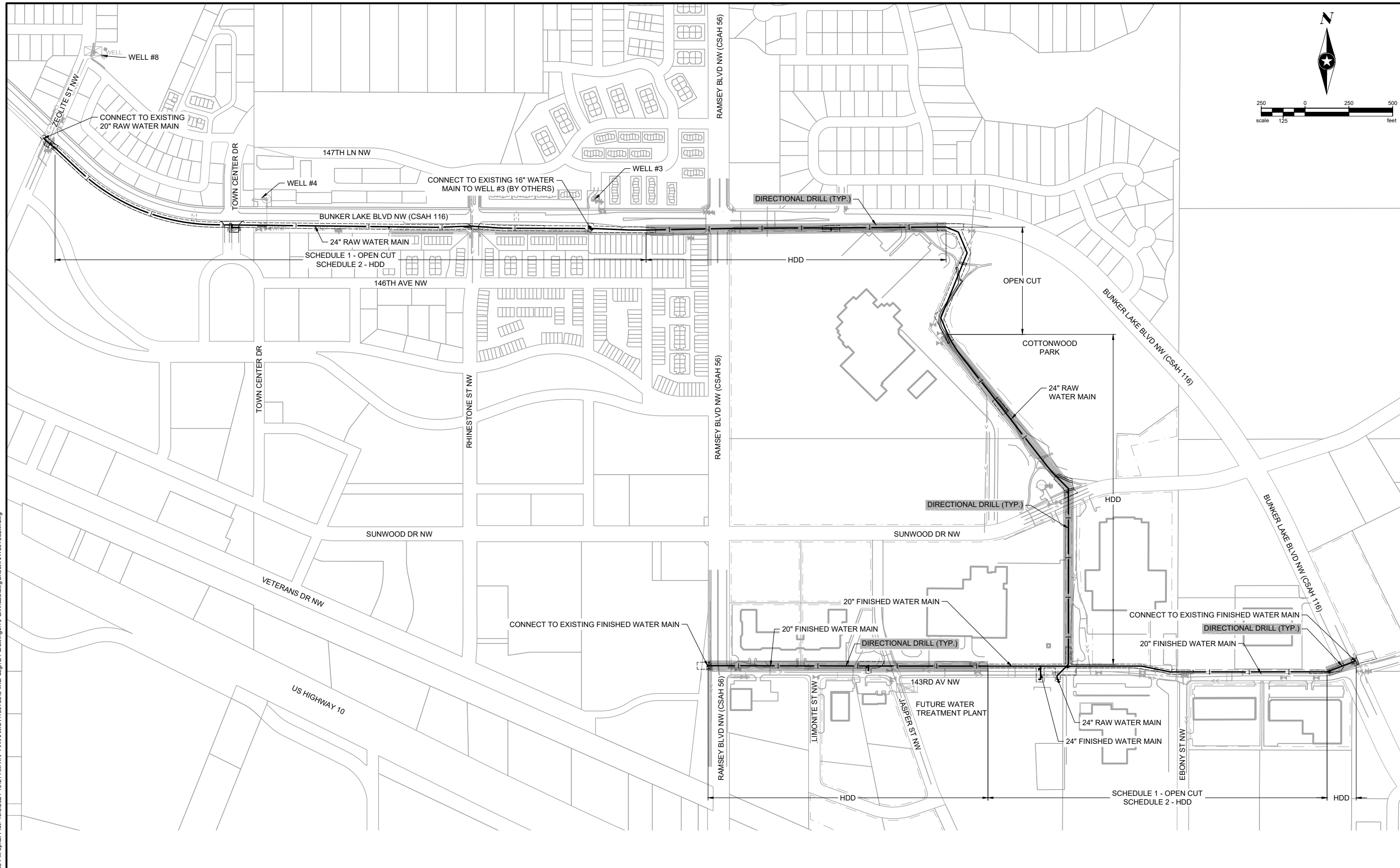
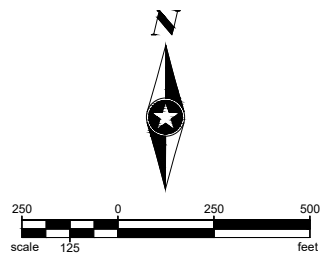
Know what's below.
Call before you dig.

EXISTING

- RIGHT OF WAY
- PERMANENT EASEMENT
- DRAINAGE AND UTILITY EASEMENT
- PROPERTY LINE
- △ XX HORIZONTAL CONTROL POINT
- × BM BENCHMARK
- SURVEY MARKER
- SOIL BORING
- SANITARY SEWER AND MANHOLE
- FM FORCE MAIN AND LIFT STATION
- SANITARY SEWER SERVICE & CLEANOUT
- WATER MAIN, HYDRANT, VALVE AND MANHOLE
- WATER SERVICE AND CURB STOP BOX
- STORM SEWER, MANHOLE AND CATCH BASIN
- CULVERT AND APRON ENDWALL
- GAS MAIN, VALVE, VENT AND METER
- HH HANDHOLE
- FO BURIED FIBER OPTIC CABLE AND MANHOLE
- T-BUR BURIED PHONE CABLE, PEDESTAL AND MANHOLE
- TV-BUR BURIED TV CABLE, PEDESTAL AND MANHOLE
- P-BUR BURIED ELECTRIC CABLE, PEDESTAL, MANHOLE, TRANSFORMER AND METER
- OVERHEAD WIRE, POLE AND GUY WIRE
- ★ LIGHT POLE
- ★ TRAFFIC SIGNAL
- ★ STREET NAME SIGN
- ★ SIGN (NON STREET NAME)
- ==== RAILROAD TRACKS
- DECIDUOUS AND CONIFEROUS TREE
- BUSH / SHRUB AND STUMP
- EDGE OF WOODED AREA
- WET WETLAND
- BUILDING
- FENCE (UNIDENTIFIED)
- BARBED WIRE FENCE
- CHAIN LINK FENCE
- ELECTRIC WIRE FENCE
- WOOD FENCE
- WOVEN WIRE FENCE
- PLATE BEAM GUARDRAIL
- CABLE GUARDRAIL
- POST / BOLLARD
- RETAINING WALL


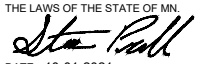
PROPOSED

- 6+00 STREET CENTERLINE
- RIGHT-OF-WAY
- PERMANENT EASEMENT
- TEMPORARY EASEMENT
- CONSTRUCTION LIMITS
- FM SANITARY SEWER, BULKHEAD AND MANHOLE
- FORCE MAIN
- SANITARY SERVICE AND CLEANOUT
- WATER MAIN, TEE, HYDRANT, BULKHEAD AND VALVE
- WATER VALVE MANHOLE, REDUCER, BEND AND CROSS
- WATER SERVICE AND CURB STOP BOX
- STORM SEWER, MANHOLE AND CATCH BASIN
- CULVERT AND APRON ENDWALL
- DRAIN TILE
- DITCH / SWALE
- RIPRAP
- ★ STREET NAME SIGN
- ★ SIGN (NON STREET NAME)
- RETAINING WALL



Save: 10/12/2021 1:53 PM sprall Plot: 10/6/2021 10:21 AM X:\PT\RAMSY\159783\5-final-dsgn\5-1-drawings\10-Civil\cad\dwg\sheet\RA159783.LM.dwg

SEH Project	Ramsy159783	Rev.#	Revision Issue Description	Date	Rev.#	Revision Issue Description	Date
Drawn By	JRB, SRP	.			.		
Designed By	KLK	.			.		
Checked By	CES	.			.		


 I HEREBY CERTIFY THAT THIS PLAN WAS PREPARED BY ME OR UNDER MY DIRECT SUPERVISION AND THAT I AM A DULY LICENSED PROFESSIONAL ENGINEER UNDER THE LAWS OF THE STATE OF MN.

 Stephen R. Prall
 LICENSE NO. 54949
 DATE 10-01-2021

WATER TREATMENT PLANT
TRUNK WATER MAIN IMPROVEMENTS
 Ramsey, Minnesota