

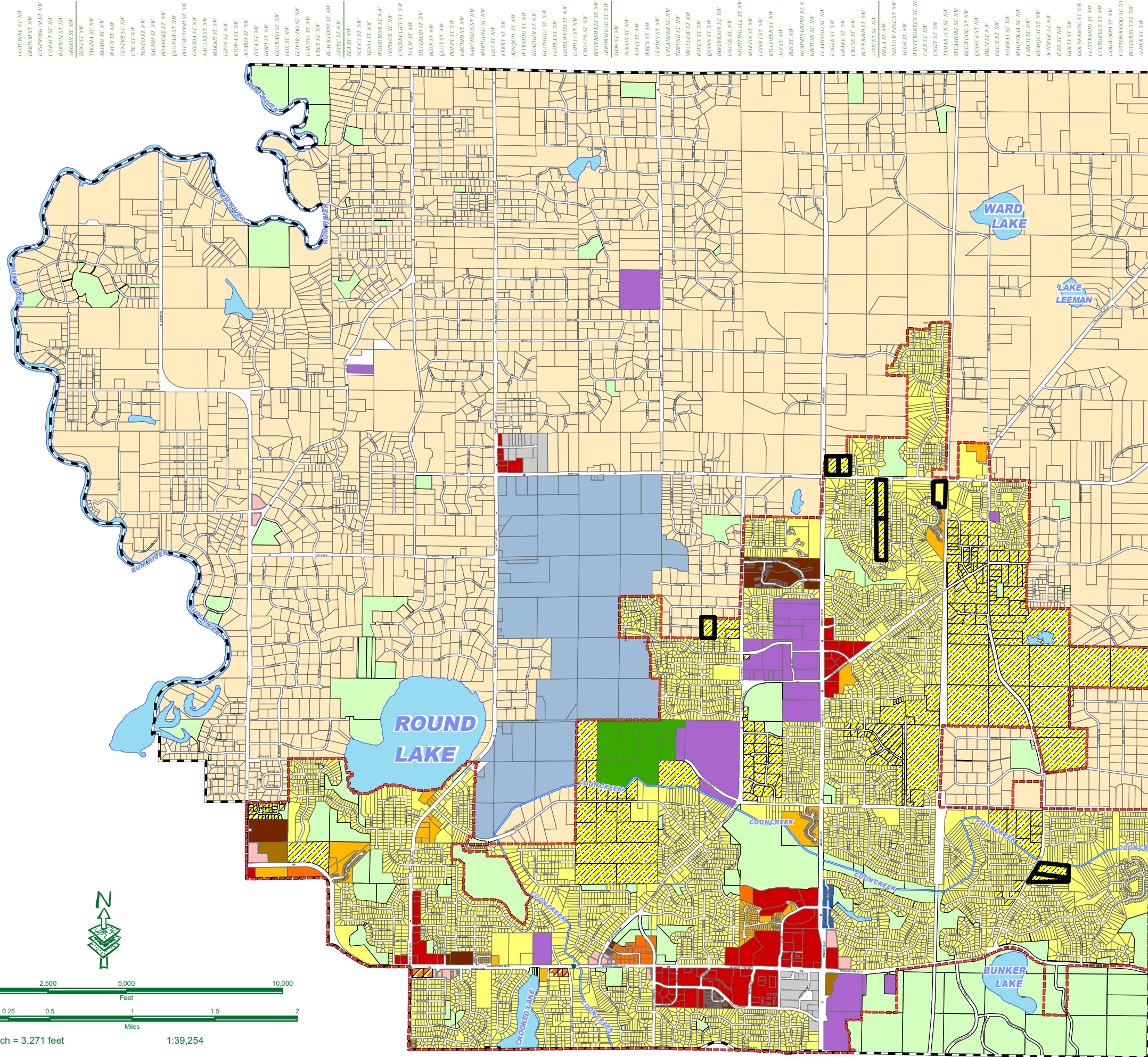
POTENTIAL DENSITY REDUCTION AREAS

City of Andover - Planning Department 1685 Crosstown Blvd. NW Andover, MN 55304 (763) 755-5100
Map Date: May 2021

LEGEND

Land Use Density Range
 Potential Density Reduction Areas 1.75 to 2.4 units per acre

For Planning Purposes Only



FLOURNOY ST. NW
 ERKUN ST. NW
 DISPERGUM ST. NW
 COBALT ST. NW
 BARKUM ST. NW
 ARGON ST. NW
 ZIN ST. NW
 YAKMA ST. NW
 XENON ST. NW
 HICCO ST. NW
 HENTREST NW
 UTR ST. NW
 TONYO ST. NW
 SALISHI ST. NW
 ROADWAGE ST. NW
 QUARHAST NW
 POTHRITOHU ST. NW
 ONEIDA ST. NW
 NAHLOST NW
 MAKASH ST. NW
 LIPOH ST. NW
 KROMA ST. NW
 JIARO ST. NW
 INCLIST NW
 HOPF ST. NW
 GILKANE ST. NW
 FOX ST. NW
 ELDOORDO ST. NW
 DAKOTI ST. NW
 CHEEST NW
 BLACKFOOT ST. NW
 AZECS ST. NW
 ZEA ST. NW
 YUCA ST. NW
 XENIA ST. NW
 WOODBINE ST. NW
 VINGAGE ST. NW
 UNDERCLIFF ST. NW
 TULIP ST. NW
 SILVERD ST. NW
 ROSE ST. NW
 QULEST NW
 POPPY ST. NW
 ORCIDIST NW
 MARCUSUS ST. NW
 MARGOGAD ST. NW
 LILY ST. NW
 KERRY ST. NW
 RYNGUL ST. NW
 ITHWOOD ST. NW
 HEATHER ST. NW
 GLADODLA ST. NW
 FLOMA ST. NW
 EDLWAIN ST. NW
 DALLI ST. NW
 CROCUS ST. NW
 BUTTERSWEET ST. NW
 ARBORLEAF ST. NW
 ZION ST. NW
 YUKON ST. NW
 XUPA ST. NW
 WREKA ST. NW
 VERON ST. NW
 UPLANDER ST. NW
 THRESH ST. NW
 SHALLOP ST. NW
 RAFFEN ST. NW
 QUINN ST. NW
 PARTRIDGE ST. NW
 OSAGE ST. NW
 NIGHTINGALE ST. NW
 MARTIN ST. NW
 LINNET ST. NW
 KILLDEER ST. NW
 JAY ST. NW
 IRIS ST. NW
 HUMMINGBIRD ST. NW
 GROUSE ST. NW
 FLAMINGO ST. NW
 EAGLE ST. NW
 DRAKE ST. NW
 CRANE ST. NW
 BLUEBIRD ST. NW
 ADICET ST. NW
 ZILLA ST. NW
 YELLOW PINE ST. NW
 XEON ST. NW
 WINTERGREEN ST. NW
 VALER ST. NW
 UNFT ST. NW
 TAMARACK ST. NW
 STAMORE ST. NW
 REDWOOD ST. NW
 QUINCE ST. NW
 PALM ST. NW
 OLIVE ST. NW
 NORBIT ST. NW
 MARGVOLA ST. NW
 LARCH ST. NW
 KUMQUAT ST. NW
 JUNPER ST. NW
 ILEX ST. NW
 HOLY ST. NW
 GOLDENROD ST. NW
 FLINTWOOD ST. NW
 EYEBREA ST. NW
 DOGWOOD ST. NW
 COTTONWOOD ST. NW
 BUTTERNUT ST. NW
 ALDER ST. NW
 UNIDENTIFIED EXC

181ST AVE. NW
 180TH AVE. NW
 179TH AVE. NW
 178TH AVE. NW
 177TH AVE. NW
 176TH AVE. NW
 175TH AVE. NW
 174TH AVE. NW
 173RD AVE. NW
 172ND AVE. NW
 171ST AVE. NW
 170TH AVE. NW
 169TH AVE. NW
 168TH AVE. NW
 167TH AVE. NW
 166TH AVE. NW
 165TH AVE. NW
 164TH AVE. NW
 163RD AVE. NW
 162ND AVE. NW
 161ST AVE. NW
 160TH AVE. NW
 159TH AVE. NW
 158TH AVE. NW
 157TH AVE. NW
 156TH AVE. NW
 155TH AVE. NW
 154TH AVE. NW
 153RD AVE. NW
 152ND AVE. NW
 151ST AVE. NW
 150TH AVE. NW
 149TH AVE. NW
 148TH AVE. NW
 147TH AVE. NW
 146TH AVE. NW
 145TH AVE. NW
 144TH AVE. NW
 143RD AVE. NW
 142ND AVE. NW
 141ST AVE. NW
 140TH AVE. NW
 139TH AVE. NW
 138TH AVE. NW
 BUNKER LAKE BLVD.
 136TH AVE. NW
 135TH AVE. NW
 134TH AVE. NW
 133RD AVE. NW

