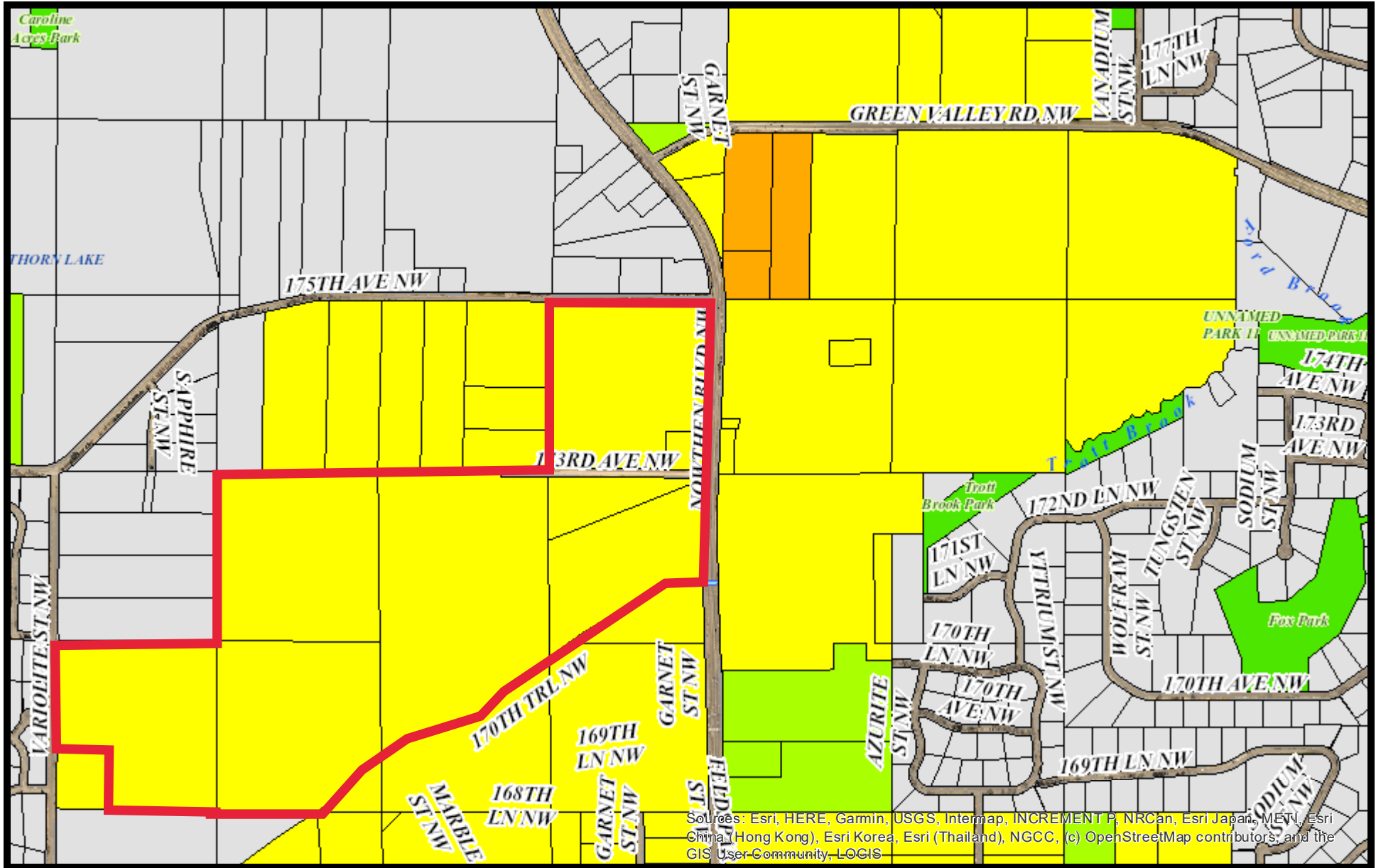
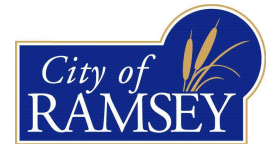


Proposed Amendment Areas



Sources: Esri, HERE, Garmin, USGS, Intermap, INCREMENT P, NRCan, Esri Japan, METI, Esri China (Hong Kong), Esri Korea, Esri (Thailand), NGCC, (c) OpenStreetMap contributors, and the GIS User-Community, LOGIS

12/8/2021, 1:55:15 PM

0 0.075 0.15 0.3 0.45 0.6 mi

Other areas that meet criteria could also be <3 units/acre. Would be determined at time of proposal.