

PROPOSALS MUST BE RECEIVED BY:  
**4:30 pm on Wednesday, March 2<sup>nd</sup> 2022**

Deliver by e-mail ONLY to:

Mary Jo Warner  
Ramsey, MN 55303  
763-433-9820

E-mail to: [mwarner@cityoframsey.com](mailto:mwarner@cityoframsey.com)

**REQUEST FOR QUOTATION**

**MANUFACTURE AND INSTALL, FABRICATED ALUMINUM  
MONUMENT FOR *RIVER'S BEND PARK***



## PROPOSAL SPECIFICATIONS

**Provide and construct/furnish S/F fabricated aluminum monument with painted textured finish pursuant to all specifications noted herein, and as follows:**

I/We agree to furnish all materials, labor and site security to perform the work below.

- Mobilization and deliver the above reference monument to and for River's Bend Park 5000 142<sup>nd</sup> Lane NW.
- Quoted price must include detailed shop drawings for approval, manufacturing and installation.
- This Request for Quotation shall be a lump sum amount, with no change orders, unless upon mutual agreement, the City would add to the scope of the project.

### **Work and Staging Areas:**

Confine work activities to the monument location, with care to minimize trampling of the perennial plants and woody plants (if any). Contractor is responsible for maintaining safe job site conditions for the public at all times including when not present (E.g. overnight). No construction activity shall be performed before 7 AM nor after 7 PM Monday through Saturday. The contractor shall provide 72 hour advance notice before working on Saturday. City Council approval is required for Sunday work.

A dumpster is not anticipated to be needed at the immediate site, and any construction related disposal is to be hauled away, (and NOT placed in trash receptacles) at the park.

### **Liquidated Damages:**

Liquidated damages shall be deducted from the approved quoted amount, in a sum of \$50 dollars per weekday (M-F) for non-completion after June 3<sup>rd</sup>, 2022. In submitting a quote, the Contractor Warranties the project shall be complete in every way and accepted by the City on or before the first Friday in June of 2022.

**Warranty/Guarantee:**

The Contractor warrants and guarantees to the Owner that all Work will be of good quality and free from faults or defects in accordance with this RFQ. All defective Work may be rejected.

If required by the Owner, prior to payment, the Contractor will promptly without cost to the Owner, correct defective Work, or replace it with non-defective Work. If the Contractor does not correct such defective Work or remove and replace within a reasonable time, the Owner may have the deficiency corrected or the rejected Work removed and replaced. All direct or indirect costs of such correction or removal and replacement, including compensation for additional professional services shall be paid by the Contractor, or deducted by the Owner, all such costs from the quoted contract price.

If, instead of requiring correction or removal and replacement of defective Work, the Owner (prior to approval of final payment) prefers to accept it, they may do so. In such case, if the acceptance occurs prior to final payment, a Statement shall be issued incorporating the necessary revisions, including appropriate reductions in Contract Price.

**Specification Reference:**

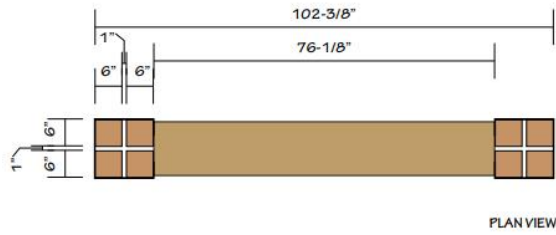
The Contractor shall inspect the site in person to be considered a Qualified Bidder, and may also request an appointment to preview the project with the City, prior to issuing his/her Quotation. The Contractor shall conduct his/her work in conformance with the specifications set forth herein, and in accordance with safe construction practices.

Additionally, the Contractor must be licensed to work in the City of Ramsey, at the time work may commence.



Site Location at park entrance: 5000 142<sup>nd</sup> Lane NW

# Specification detail



## S/F NON-ILLUMINATED FABRICATED ALUMINUM MONUMENT

- A MONUMENT**
  - FABRICATED ALUMINUM MONUMENT
  - PAINTED P1 WITH TEXTURED FINISH
- B COPY**
  - ROUTED 1/4" CORTEN FLAT CUT OUT
  - SPACED OFF FACE OF MONUMENT (TBD)
- C DECORATIVE POSTS**
  - 6" CEDAR POSTS
  - FAUX ALUMINUM FLAT BAR "BANDING"
  - FAUX "BANDING" PAINTED P2
- D MOUNTING (PG.2)**
  - CABINET IS A SLEEVE OVER OF 4" SQUARE TUBE
  - CABINET AND POSTS SIT ON CONCRETE SLAB

### FINISH SCHEDULE:

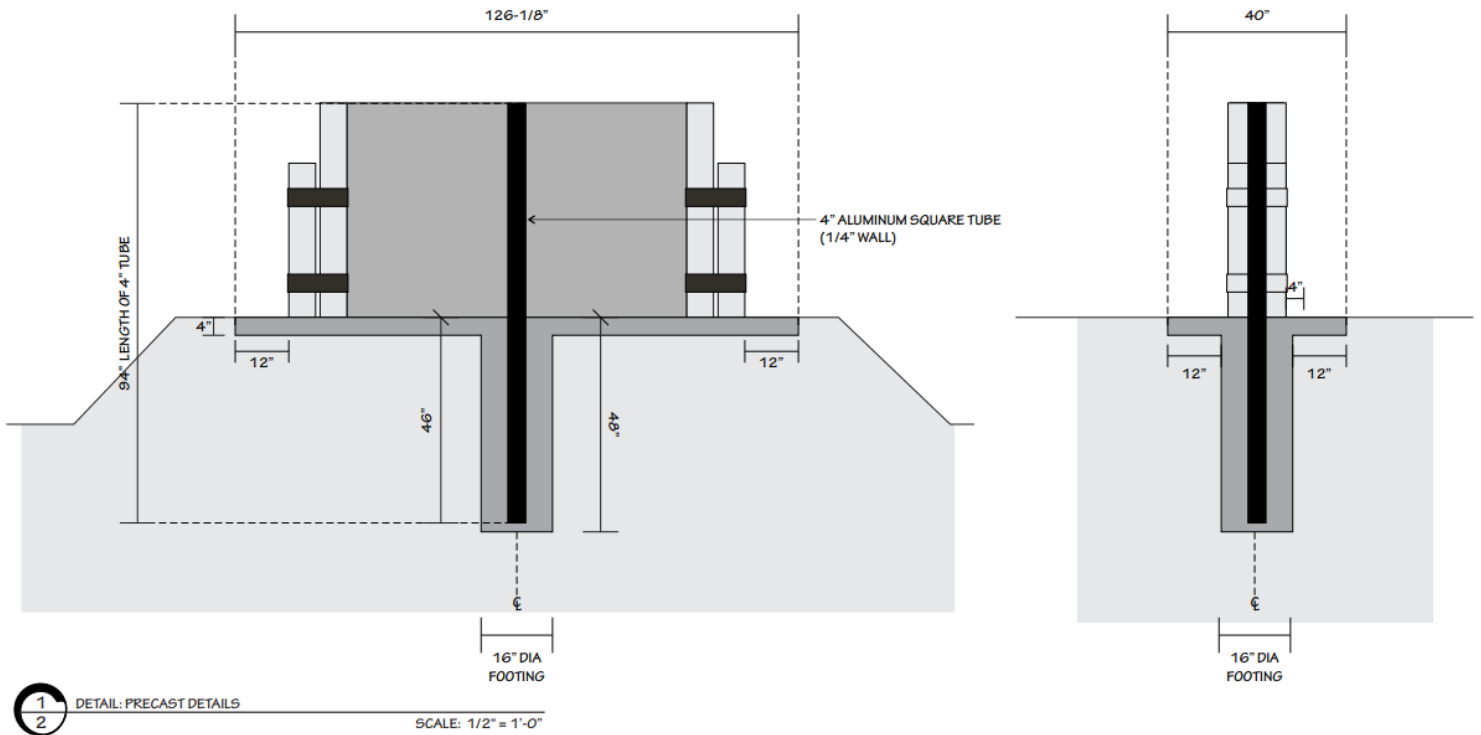
- P1** TAN PAINT TO MATCH PMS 465C
- P2** BLACK PAINT

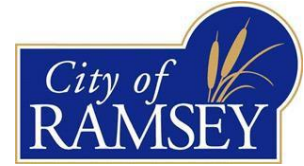


LAYOUT: S/F NON ILLUMINATED MONUMENT

SCALE: 1/2" = 1'-0"

# Specification and installation detail





**MANUFACTURE AND INSTALL, FABRICATED ALUMINUM  
MONUMENT FOR RIVER'S BEND PARK**

\$ \_\_\_\_\_ **Lump Sum.**

In submitting the above quote, I/We warrant the quote valid for work to be completed on or before June 3<sup>rd</sup>, 2022.

Additionally, I/we acknowledge each and all of the conditions, specifications and requirements above and within this RFQ. (Bidder need only to submit this page.)

Contractor name \_\_\_\_\_

Owner or representative \_\_\_\_\_

Signature \_\_\_\_\_

Phone(s) \_\_\_\_\_

E-mail \_\_\_\_\_