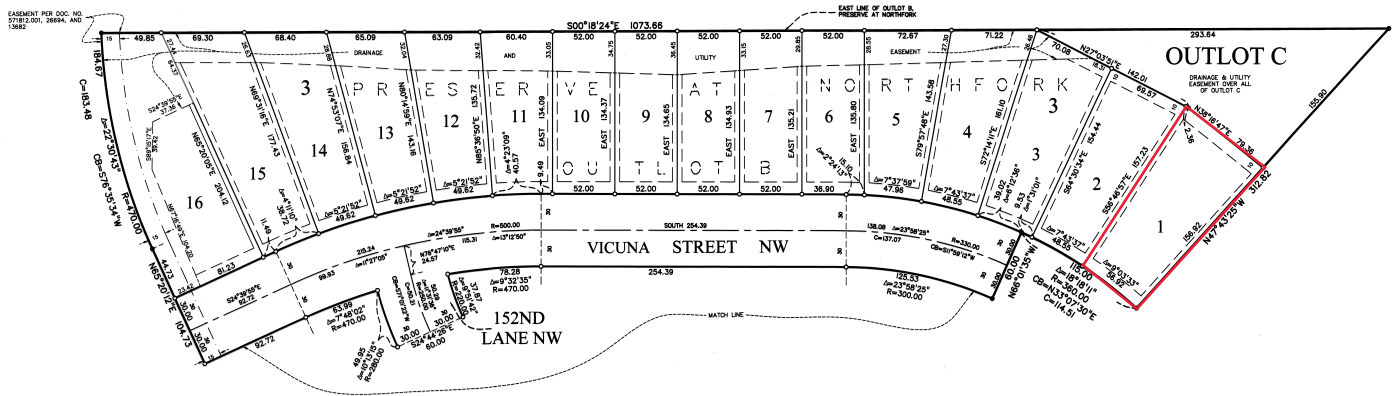


INSET B

PRESERVE AT NORTHFORK SECOND ADDITION

CITY OF RAMSEY
COUNTY OF ANOKA
SEC.19, TWP.32, RGE.25

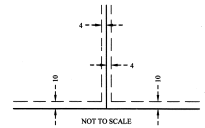


- Denotes a 1/2 inch by 1/4 inch pipe set and marked by License No. 26147.
- Denotes a Found half inch Iron Pipe marked by License No. 13642.



The basis for the bearing system is the East line of OUTLOT B, PRESERVE AT NORTHFORK, which is assumed to bear South 00 degrees 18 minutes 24 seconds East

DRAINAGE AND UTILITY EASEMENTS ARE SHOWN THIS FOR BLOCKS 2, 3, & 4:



Being 4 feet in width and adjoining lot lines, unless otherwise indicated, and 10 feet in width and adjoining right-of-way lines, unless otherwise indicated, as shown on the plat.



SATHRE-BERGQUIST, INC.