

MINNESOTA DEPARTMENT OF TRANSPORTATION
 CITY OF RAMSEY
 ANOKA COUNTY, MINNESOTA
 2022 RIVERDALE DRIVE TRUNK UTILITY IMPROVEMENTS
 CITY IMPROVEMENT PROJECT #22-05

CONSTRUCTION PLAN FOR: GRADING, LIFT STATION, SANITARY SEWER, WATERMAIN, STORM SEWER, LANDSCAPING AND RELATED APPURTENANCES

S.A.P. 199-115-004 LOCATED ON RIVERDALE DR NW FROM BOWERS DRIVE TO 200' EAST OF LLAMA STREET

RIVERDALE DR (S.A.P. 199-115-004)

GROSS LENGTH	4209 FEET	0.797 MILES
BRIDGE LENGTH	NA FEET	NA MILES
EXCEPTION LENGTH	NA FEET	NA MILES
NET LENGTH	4209 FEET	0.797 MILES

LENGTH AND DESCRIPTION BASED UPON PROPOSED RIVERDALE DR NW CENTERLINE

MINN. PROJ. NO. _____ STATE FUNDS _____

--- GOVERNING SPECIFICATIONS ---
 THE 2020 EDITION OF THE MINNESOTA DEPARTMENT OF TRANSPORTATION "STANDARD SPECIFICATION FOR CONSTRUCTION" SHALL GOVERN.

ALL TRAFFIC CONTROL DEVICES AND SIGNING SHALL CONFORM AND BE INSTALLED IN ACCORDANCE WITH THE "MINNESOTA MANUAL ON UNIFORM TRAFFIC CONTROL DEVICES" (MN MUTCD) AND PART VI, "FIELD MANUAL" FOR TEMPORARY TRAFFIC CONTROL DEVICES.

--- GOVERNING SPECIFICATIONS ---
 THE 2018 EDITION OF THE CITY ENGINEERS ASSOCIATION OF MINNESOTA "STANDARD SPECIFICATIONS" SHALL GOVERN.

FUTURE DESIGN DESIGNATION	RIVERDALE DR NW
STA. 0+75 TO STA. 42+84	
FUNTIONAL CLASSIFICATION	URBAN COLLECTOR
R-VALUE	50
ΣN-18	274,000
NO. & WIDTH OF TRAFFIC LANES	2 & 12 ft
NO. & WIDTH OF SHOULDER	2 & 8 ft
ADT (PRESENT YEAR) 2022	500
ADT (PROJECTED YEAR) 2042	4,500
HCADT (PROJECTED YEAR) 2042	3.85%
DESIGN SPEED	30 mph
DESIGN LOAD	10 ton
DESIGN SPEED FOR ROADWAY BASED ON ON STOPPING SIGHT DISTANCE:	
HEIGHT OF EYE = 3.5 FT	
HEIGHT OF OBJECT = 2.0 FT	

FUTURE DESIGN DESIGNATION	OFF-ROAD TRAIL
STA 0+75 TO 42+84	
FUNTIONAL CLASSIFICATION	BIKE TRAIL
DESIGN SPEED	20 MPH
STOPPING SIGHT DISTANCE	
HEIGHT OF EYE = 4.5 FT	
HEIGHT OF OBJECT = 0 FT	

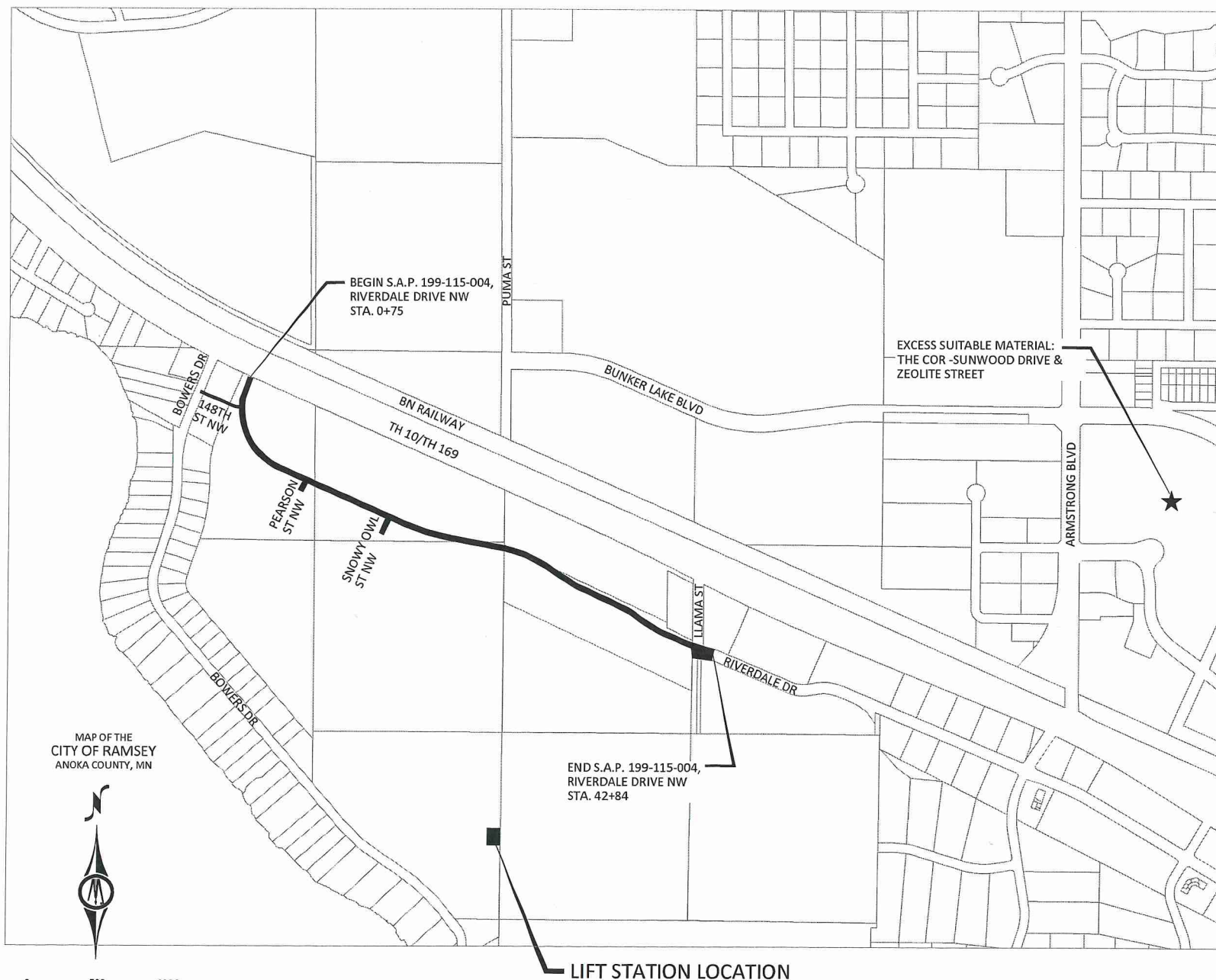
MAP LEGEND

- PROJECT LIMITS
- ★ EXCESS SUITABLE MATERIAL DISPOSAL SITE
- AGGREGATE STOCKPILE SITE: RAMSEY PUBLIC WORKS, 14199 JASPER STREET NW

NOTE: EXISTING UTILITY INFORMATION SHOWN ON THIS PLAN HAS BEEN PROVIDED BY THE UTILITY OWNER. THE CONTRACTOR SHALL FIELD VERIFY EXACT LOCATIONS PRIOR TO COMMENCING CONSTRUCTION AS REQUIRED BY STATE LAW. NOTIFY GOPHER STATE ONE CALL, 1-800-252-1166 OR 651-454-0002.

THE SUBSURFACE UTILITY INFORMATION IN THIS PLAN IS UTILITY QUALITY LEVEL D UNLESS OTHERWISE NOTED. THIS UTILITY LEVEL WAS DETERMINED ACCORDING TO THE GUIDELINES OF CI/ASCE 38-02, ENTITLED "STANDARD GUIDELINES FOR THE COLLECTION AND DEPICTION OF EXISTING SUBSURFACE UTILITY DATA."

BID LOCATION:
 ONLINE BID THROUGH QUEST CDN



SHEET NUMBER	SHEET TITLE
GENERAL	
1	TITLE SHEET
2	STATEMENT OF ESTIMATED QUANTITIES
3	LOCATION PLAN
CIVIL	
4	TYPICAL SECTIONS
5-7	CONSTRUCTION DETAILS
8	ALIGNMENT TABULATION
9-12	EXISTING CONDITIONS, REMOVALS PLAN
13-15	STORM WATER POLLUTION PREVENTION PLAN
16-20	EROSION CONTROL & TURF ESTABLISHMENT PLAN
21-27	SANITARY SEWER & WATERMAIN PLAN & PROFILE
28-34	STORM SEWER PLAN & PROFILE
35-37	STORM SEWER LEAD PROFILES
38	POND GRADING PLAN
39-42	LIFT STATION
43-44	LIFT STATION ELECTRICAL PLANS
45-72	CROSS SECTIONS

THIS PLAN SET CONTAINS 72 SHEETS.

Kevin P. Kielb
 Kevin P. Kielb, P.E.
 Design Engineer: I hereby certify that this plan was prepared by me or under my direct supervision, and that I am a duly Licensed Professional Engineer under the laws of the State of Minnesota.
 Date 02/15/2022 License Number 23211

Bruce R. Wenzel
 Approved: City of RAMSEY Engineer Date 3/7/2022

District State Aid Engineer: _____ Date _____
 Review for compliance with State Aid Rules/Policy

Approved for State Aid Funding: State Aid Engineer _____ Date _____

± BM=875.70 EX TNH @ SE CORNER LLAMA ST & RIVERDALE DR	PROJECT DATUM: HORIZONTAL: VERTICAL:	RECORD DRAWING INFORMATION OBSERVER: CONTRACTOR: DATE:
--	--	---

© Bolton & Menk, Inc. 2022. All Rights Reserved. H:\RAMS\08112507\CD\CD\122507\001.dwg 1/23/2022 9:18:26 AM

BOLTON & MENK

7533 SUNWOOD DR NW, SUITE 206
 RAMSEY, MINNESOTA 55303
 Phone: (763) 433-2851
 Email: Ramsey@bolton-menk.com
 www.bolton-menk.com

DESIGNED	NO.	ISSUED FOR	DATE
ZFL			
DRAWN	ZFL		
CHECKED	KPK		
CLIENT PROJ. NO.	22-05		