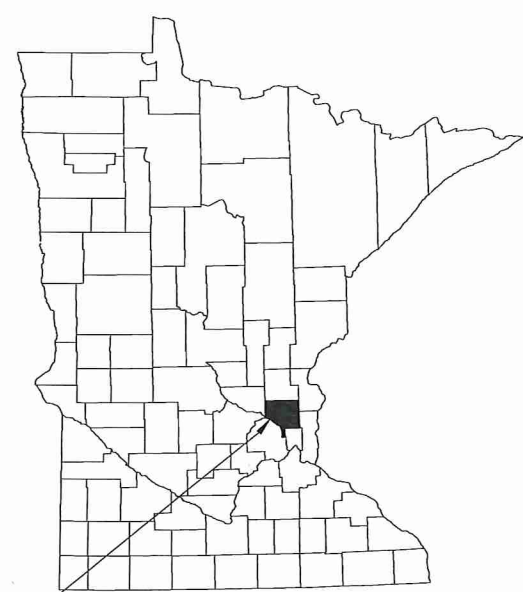
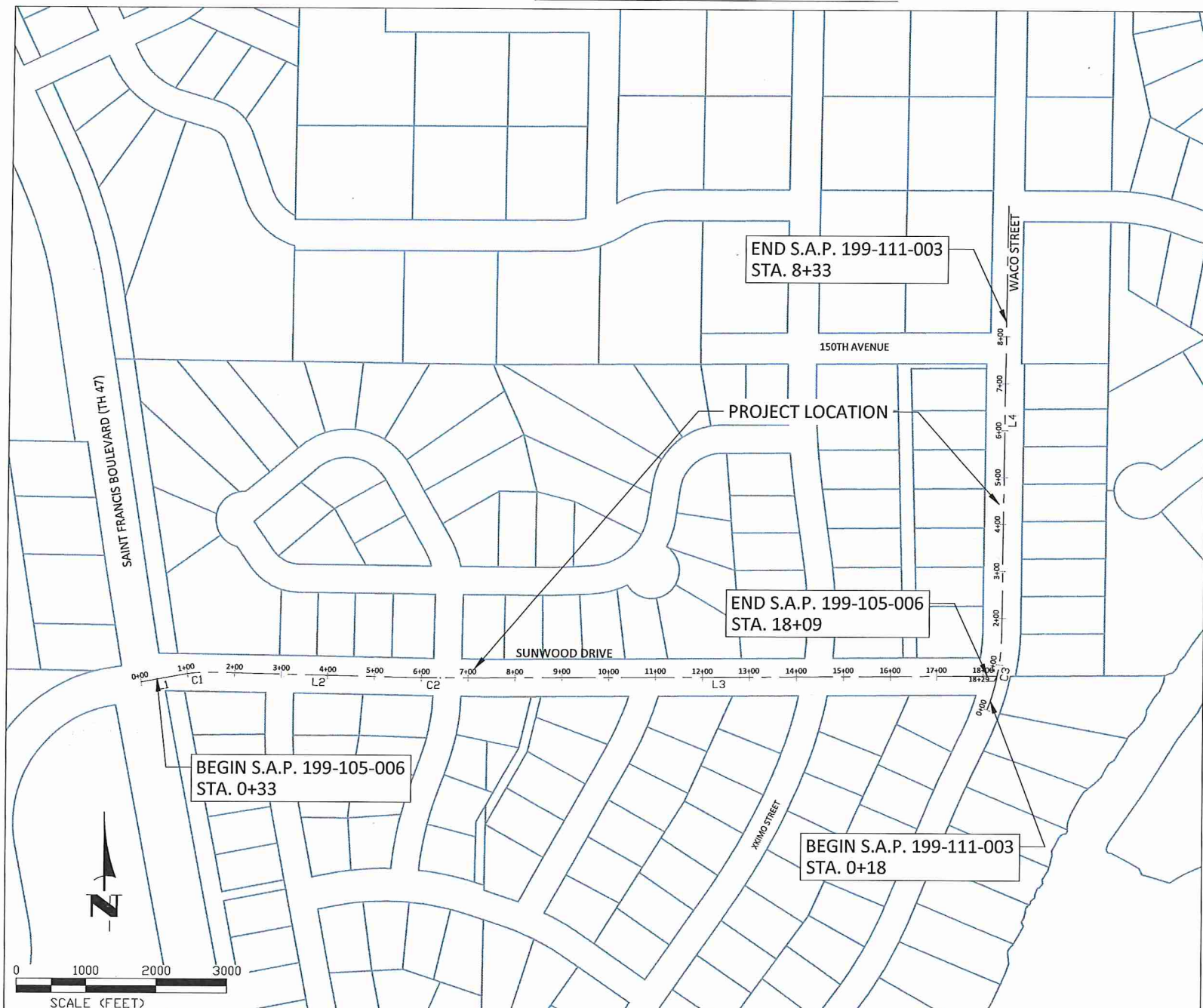


CITY OF RAMSEY

STREET CONSTRUCTION PLANS FOR BITUMINOUS RECLAMATION AND PAVING. S.A.P. 199-105-006 & S.A.P. 199-111-003

S.A.P. 199-105-006 LOCATED ON SUNWOOD DRIVE BETWEEN TRUNK HIGHWAY 47 AND WACO STREET & S.A.P. 199-111-003 LOCATED ON WACO STREET BETWEEN SUNWOOD DRIVE AND 150TH AVENUE.
FROM NE 1/4 OF THE NW 1/4 OF S25, T32, R25 TO SE 1/4 OF THE SE 1/4 OF S24, T32, R25



THE SUBSURFACE UTILITY INFORMATION IN THIS PLAN IS UTILITY QUALITY LEVEL D. THIS QUALITY LEVEL WAS DETERMINED ACCORDING TO THE GUIDELINES OF CI/ASCE 38-02, ENTITLED "STANDARD GUIDELINES FOR THE COLLECTION AND DEPICTION OF EXISTING SUBSURFACE UTILITY DATA."

NOTE: EXISTING UTILITY INFORMATION SHOWN ON THIS PLAN HAS BEEN PROVIDED BY THE UTILITY OWNER. THE CONTRACTOR SHALL FIELD VERIFY EXACT LOCATIONS PRIOR TO COMMENCING CONSTRUCTION AS REQUIRED BY STATE LAW. NOTIFY GOPHER STATE ONE CALL 1-800-252-1166 OR 651-454-0002



GOVERNING SPECIFICATIONS

THE 2020 EDITION OF THE MINNESOTA DEPARTMENT OF TRANSPORTATION "STANDARD SPECIFICATIONS FOR CONSTRUCTION" SHALL GOVERN.

ALL FEDERAL, STATE AND LOCAL LAWS, REGULATIONS AND ORDINANCES SHALL BE COMPLIED WITH IN THE CONSTRUCTION OF THIS PROJECT.

ALL TRAFFIC CONTROL DEVICES AND SIGNING SHALL CONFORM TO THE MINNESOTA MANUAL ON UNIFORM TRAFFIC CONTROL DEVICES, INCLUDING THE FIELD MANUAL FOR TEMPORARY TRAFFIC CONTROL ZONE LAYOUTS.

SHEET INDEX

THIS PLAN CONTAINS 26 SHEETS

SHEET NO.	DESCRIPTION
01	TITLE SHEET
02	STATEMENT OF ESTIMATED QUANTITIES
03	TABULATIONS
04	ALIGNMENT LAYOUT
05	TYPICAL SECTION
06-07	CITY DETAILS
08-13	MNDOT PEDESTRIAN RAMP DETAILS
14-15	SWPPP
16	EROSION CONTROL
17	REMOVALS (SUNWOOD STA. 0+18 TO 6+00)
18	REMOVALS (SUNWOOD STA. 6+00 TO 12+25)
19	REMOVALS (SUNWOOD STA. 12+25 TO WACO STA. 3+50)
20	REMOVALS (WACO STA. 3+50 TO 8+33)
21	STREET IMPROVEMENTS (SUNWOOD STA. 0+18 TO 6+00)
22	STREET IMPROVEMENTS (SUNWOOD STA. 6+00 TO 12+25)
23	STREET IMPROVEMENTS (SUNWOOD STA. 12+25 TO WACO STA. 3+50)
24	STREET IMPROVEMENTS (WACO STA. 3+50 TO 8+33)
25	PAVEMENT MARKING (SUNWOOD STA. 0+18 TO 12+25)
26	PAVEMENT MARKING (SUNWOOD STA. 12+25 TO WACO STA. 8+33)

LEGEND

	SANITARY MANHOLE		Easement - Drainage & Utility
	STORM SEWER MANHOLE		Easement - Roadway
	CATCH BASIN MANHOLE		LOT LINE
	CATCH BASIN		ELECTRIC LINE
	CATCH BASIN - GROUT		ELECTRIC LINE - BURIED
	CATCH BASIN - RESET		ELECTRIC LINE - OVERHEAD
	FLARED END SECTION		GAS LINE
	CULVERT END SECTION		TELECOMMUNICATION LINE
	HYDRANT		TELECOMM - OVERHEAD
	VALVE		FIBER OPTIC LINE
	TREE - CONIFEROUS		TREE LINE
	TREE - DECIDUOUS		LANDSCAPE
	SHRUB		RETAINING WALL
	LIGHT POLE		FENCE
	SIGN		SILT FENCE
	MAILBOX		WATERMAIN
	PEDESTAL - TELECOM		SANITARY SEWER
	PEDESTAL - ELECTRIC		STORM SEWER
	HAND HOLE		DRAIN TILE
	DRIVE - BITUMINOUS		LANDSCAPE - ROCK
	DRIVE - CONCRETE		LANDSCAPE - MULCH
	DRIVE - GRAVEL		LANDSCAPE - RIP RAP
	CONCRETE WALK		PR. DRIVE - BITUMINOUS
	BITUMINOUS TRAIL		PR. DRIVE - CONCRETE
	REMOVE BIT PAVE		PR. DRIVE - GRAVEL
	REMOVE CONCRETE PAVE		PR. CONCRETE WALK
	REMOVE GRAVEL SURFACE		PR. CONCRETE
	MILL BIT PAVEMENT		PR. SEEDING AREA
	RECLAIM BIT PAVEMENT		

NO.	PROJECT	STA. TO STA.	GROSS LENGTH	BRIDGE LENGTH	NET LENGTH	NET LENGTH (MILES)	ADT (2022)	ADT (2042)	DESIGN ESAL	R VALUE	TON DESIGN	DESIGN SPEED	DESIGN SPEED NOT MET	NUMBER OF LANES	WIDTH OF LANES	NUMBER OF SHOULDERS	WIDTH OF LANES	FUNCTIONAL CLASSIFICATION
①	S.A.P. 199-105-006 SUNWOOD DRIVE	0+33 TO 18+09	1776 FT	0 FT	1776 FT	0.34 MI	1750	1925	205,000	50	10	30	N/A	2	12'	2	10'	COLLECTOR
②	S.A.P. 199-111-003 WACO STREET	0+18 TO 8+33	815 FT	0 FT	815 FT	0.15 MI	520	1610	117,000	50	10	30	N/A	2	12'	2	10'	COLLECTOR

I hereby certify that this plan, specification, or report was prepared by me or under my direct supervision and that I am a duly Licensed Professional Engineer under the laws of the State of Minnesota.

JOE FERIANEK, P.E. 57095 LIC. NO. DATE 3/11/22

APPROVED: DATE 3/14/22
CITY ENGINEER, CITY OF RAMSEY

DISTRICT STATE AID ENGINEER: REVIEWED FOR COMPLIANCE WITH STATE AID RULES/POLICY DATE _____

STATE AID ENGINEER: APPROVED FOR STATE AID FUNDING DATE _____

Mar 11, 2022 - 8:34am G:\Engineering\AutoCad Dwg\Projects N-Z\Sunwood Drive & Waco Street 22-01\Plan Drawings\22-01 Title Sheet.dwg

CITY OF RAMSEY
7550 SUNWOOD DRIVE
RAMSEY, MN 55303
(763) 427-1410 FAX (763) 433-9898

STOPPING SIGHT DISTANCE BASED ON:
3.5 FT - HEIGHT OF EYE
2.0 FT - HEIGHT OF OBJECT

DATUM:
VERTICAL: NAVD 88
HORIZONTAL: ANOKA COUNTY COORDINATES (1996 ADJUSTMENT)

SAP 199-105-006
SAP 199-111-003

DATE	REVISION