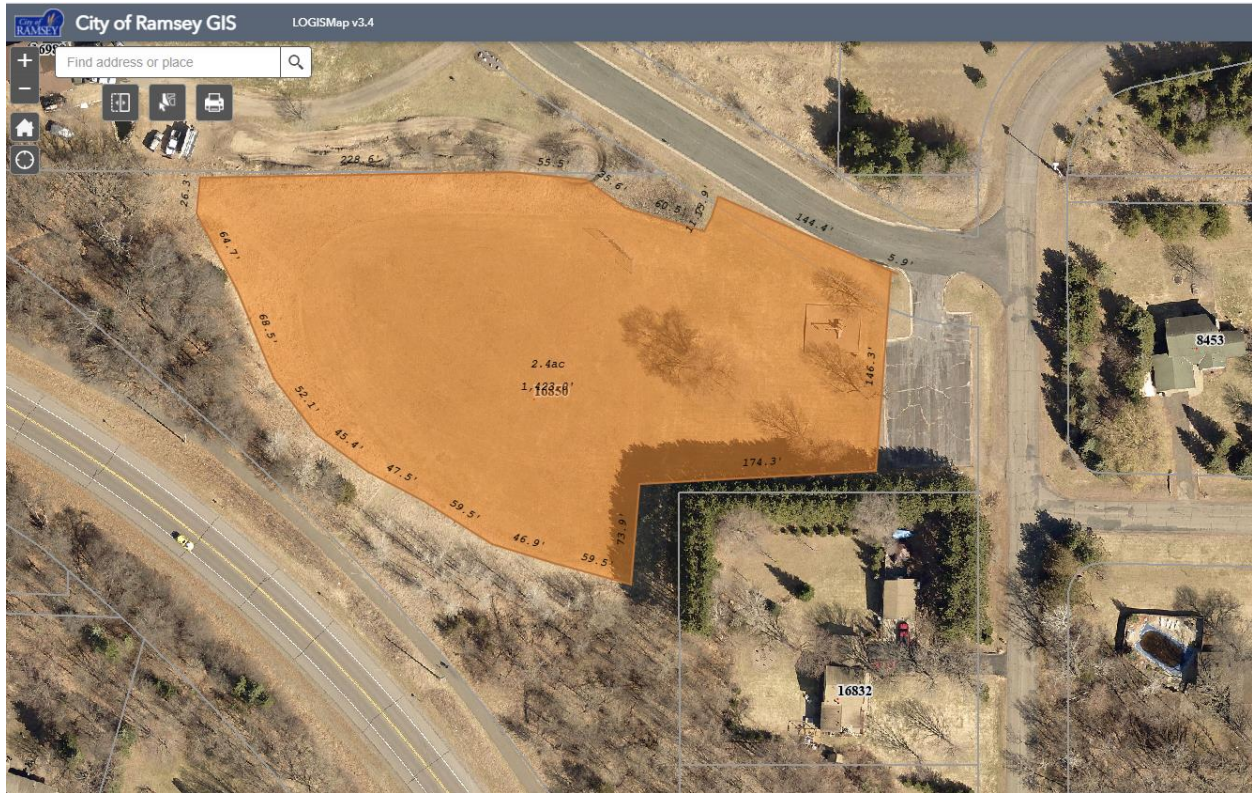


City of Ramsey
Autumn Heights Park – Turf to Native Prairie Planting



Submitted by:

Todd Rexine
Great River Greening/Greening Solutions
251 Starkey Street, Ste 2200
St. Paul, MN 55107
651 272-3992

Submitted to:

Mark Riverblood
City of Ramsey
7550 Sunwood Drive
Ramsey, MN 55303
763 433-9853

Site Notes:

Turf grass – sparse turf with spotty perennial yard weeds interspersed with quack and crab grass.

Perimeter of the site is surrounded by unmowed vegetation with patches of sumac colonies and some buckthorn and honeysuckle.

Siberian Elm – large multi stemmed Siberian elm growing in the middle of the park space.

Invasive tree and shrub species (buckthorn and honeysuckle) on southern property line.

Project Plan:

Site Preparation and seeding

- Removal and disposal of large multi-trunk Siberian Elm
- Cut/remove/stump treat invasive tree and shrub species along southern property line
- Two herbicide applications with a nonselective herbicide
- Burn thatch in surrounding perimeter of unmowed grass prior to herbicide applications
- Seed site with low stature dry prairie grasses using a no till drill
- Seed mesic areas in ROW drainage areas with modified mesic grass mix
- Removal of playground area – accomplished by City

Year 1 – Establishment management

- Three full site mowings once vegetation reaches 12-15". Vegetation will be mowed to 4-6".
- Three spot herbicide treatments will be conduct at time of mowings.

Year 2 – Establishment management

- Combination of two spot mowing and spot herbicide treatment of weedy and invasive species.
- Final herbicide visit will be a full site herbicide spray using herbicide specific to broad leaf plants.
- Seed site with low stature dry prairie forbs using a no till drill after full site spray. Seeding will not occur until after residual time from full site spray.

Year 3 – Establishment management

- Combination of three spot mowing and spot herbicide treatment of weedy and invasive species.

Year 4 – Establishment and Forb Seeding

- Conduct three maintenance visits consisting of spot mowing and spot herbicide treatment of weedy and invasive species.

Year 5 – Establishment management

- Combination of up to three spot mowing and spot herbicide treatment of weed and invasive species.
- Conduct a prescribed burn on the site.

Proposed Seed List:

BWSR 35-621

Common Name	Scientific Name	Rate (kg/ha)	Rate (lb/ac)	% of Mix (% by wt)	Seeds/ sq ft
side-oats grama	<i>Bouteloua curtipendula</i>	1.27	1.13	10.23%	2.48
blue grama	<i>Bouteloua gracilis</i>	0.76	0.68	6.19%	10.00
kalm's brome	<i>Bromus kalmii</i>	0.35	0.31	2.78%	0.90
nodding wild rye	<i>Elymus canadensis</i>	1.68	1.50	13.61%	2.86
slender wheatgrass	<i>Elymus trachycaulus</i>	1.32	1.18	10.76%	3.00
junegrass	<i>Koeleria macrantha</i>	0.46	0.41	3.71%	30.00
little bluestem	<i>Schizachyrium scoparium</i>	1.69	1.51	13.70%	8.30
sand dropseed	<i>Sporobolus cryptandrus</i>	0.25	0.22	1.98%	16.00
prairie dropseed	<i>Sporobolus heterolepis</i>	0.29	0.26	2.32%	1.50
	Total Grasses	8.07	7.20	65.28%	75.04
butterfly milkweed	<i>Asclepias tuberosa</i>	0.07	0.06	0.52%	0.09
whorled milkweed	<i>Asclepias verticillata</i>	0.01	0.01	0.11%	0.05
bird's foot coreopsis	<i>Coreopsis palmata</i>	0.06	0.05	0.50%	0.20
white prairie clover	<i>Dalea candida</i>	0.10	0.09	0.78%	0.60
purple prairie clover	<i>Dalea purpurea</i>	0.17	0.15	1.32%	0.80
ox-eye	<i>Heliopsis helianthoides</i>	0.07	0.06	0.51%	0.13
round-headed bush clover	<i>Lespedeza capitata</i>	0.03	0.03	0.31%	0.10
rough blazing star	<i>Liatris aspera</i>	0.02	0.02	0.17%	0.11
dotted blazing star	<i>Liatris punctata</i>	0.02	0.02	0.23%	0.06
wild bergamot	<i>Monarda fistulosa</i>	0.03	0.03	0.30%	0.85
horsemint	<i>Monarda punctata</i>	0.02	0.02	0.22%	0.80
stiff goldenrod	<i>Oligoneuron rigidum</i>	0.07	0.06	0.59%	0.98
large-flowered beard tongue	<i>Penstemon grandiflorus</i>	0.04	0.04	0.35%	0.20
black-eyed susan	<i>Rudbeckia hirta</i>	0.10	0.09	0.86%	3.20
gray goldenrod	<i>solidago nemoralis</i>	0.01	0.01	0.14%	1.65
skyblue aster	<i>Symphotrichum oolentangiense</i>	0.01	0.01	0.06%	0.20
silky aster	<i>Symphotrichum sericeum</i>	0.02	0.02	0.19%	0.20
bracted spiderwort	<i>Tradescantia bracteata</i>	0.01	0.01	0.12%	0.05
heart-leaved alexanders	<i>Zizia aptera</i>	0.02	0.02	0.21%	0.10
	Total Forbs	0.90	0.80	7.49%	10.37
Oats	<i>Avena sativa</i>	3.36	3.00	27.23%	1.33
	Total Cover Crop	3.36	3.00	27.23%	1.33
	Totals:	12.33	11.00	100.00%	86.75

Mesic areas will be augmented with Big Bluestem (*Andropogon gerardii*), Switch Grass (*Panicum virgatum*), and Indian Grass (*Sorghastrum nutans*)

Primary Personnel:

Project Supervisor: Davy Schmitz, Land Management Manager

Davy will be the primary point of contact with City of Ramsey staff, providing communication and progress updates.

Contact number: 612 242-3540

Certifications: MDA Certified Pesticide Applicators License (categories A & J), Chainsaw Safety Training, CPR/First Aid, MN Prescribed Burn Low complexity burn boss

On site specialist: Maggie Allardice, Field Coordinator

Maggie will be on site coordinating restoration activities and monitoring site for scheduling maintenance.

Certifications: MDA Certified Pesticide Applicators License (categories A & J), Chainsaw Safety Training, CPR/First Aid, Wildland Firefighter in training.

Great River Greening also employs numerous seasonal field staff that complete MDA Pesticide Applicator Licensing, Chainsaw Safety Training, First AID/CPR and s130/s190.

Secondary Personnel:

Todd Rexine, Director of Operation & Programs

Certifications: Chainsaw Safety Training, CPR/First Aid Adult & Pediatric, NWCG Wildland Fire Fighter Training (S-290, S131/133, S130, S190), FFT-1 (squad boss) and fire ignition.

Wiley Buck, Senior Program Manager

Certifications: Chainsaw Safety Training, CPR/First Aid Adult, State of MN RXB-2 burn boss

Becca Tucker

Certifications: CPR/First Aid Adult, NWCG Wildland Firefighter (FFT-2)



Great River Greening/Greening Solutions
 251 Starkey Street, Suite 2200
 St. Paul, MN 55107
 651.665.9500 solutions@greatrivergreening.org

Job Name: Autumn Heights Park – Turf to Prairie
Customer: Mark Riverblood
 City of Ramsey
 7550 Sunwood Drive NW
 Ramsey, MN 55303
 763 433-9853

LINE	DESCRIPTION	QUANTITY	UNIT	PRICE/UNIT	LINE TOTAL
1	Tree and shrub removal – invasive species and small stature volunteer trees and shrubs	2.5	acre	\$283	\$708.00
2	Herbicide treatment to kill existing vegetation	2.5	acre	\$328	\$821.00
3	Herbicide treatment to kill existing vegetation	2.5	acre	\$328	\$821.00
4	Controlled burn to eliminate thatch in perimeter unmowed area	2.5	acre	\$1451	\$3628.00
5	Seeding – grass only w/ no till drill, augmented mix in mesic areas of site	2.5	acre	\$602	\$1505.00
		Install total			\$7483.00
6	Large Siberian Elm removal and disposal (no stump grinding)	1	each	\$4000	\$4000.00
		Siberian Elm removal total			\$4000.00
7	Year 1 full site mowing	2.5	acre	\$195	\$489.00
8	Year 1 full site mowing	2.5	acre	\$195	\$489.00
9	Year 1 full site mowing	2.5	acre	\$195	\$489.00
10	Year 1 spot herbicide treatments	2.5	acre	\$244	\$609.00
		Year 1 Establishment Maintenance			\$2076.00
11	Year 2 spot mowing and herbicide treatments	2.5	acre	\$232	\$580.00
12	Year 2 spot mowing and herbicide treatments	2.5	acre	\$232	\$580.00
13	Year 2 – late summer/early fall full site foliar site spray	2.5	acre	\$248	\$620.00
14	Seed site with dry short prairie forb mix w/ no till drill	2.5	acre	\$837	\$2092.00
		Year 2 Forb Seeding & Establishment Maintenance			\$3872.00
15	Year 3 spot mowing and herbicide treatments	2.5	acre	\$232	\$580.00
16	Year 3 spot mowing and herbicide treatments	2.5	acre	\$232	\$580.00
17	Year 3 spot mowing and herbicide treatments	2.5	acre	\$232	\$580.00
		Year 3 Establishment Maintenance			\$1740.00
18	Year 4 spot mowing and herbicide treatments	2.5	acre	\$232	\$580.00
19	Year 4 spot mowing and herbicide treatments	2.5	acre	\$232	\$580.00
20	Year 4 spot mowing and herbicide treatments	2.5	acre	\$232	\$580.00
		Year 4 Establishment Maintenance			\$1740.00
21	Year 5 spot mowing and herbicide treatments (per occurrence as needed)	2.5	acre	\$232	\$580.00
22	Year 5 spot mowing and herbicide treatments (per occurrence as needed)	2.5	acre	\$232	\$580.00

23	Year 5 spot mowing and herbicide treatments (per occurrence as needed)	2.5	acre	\$232	\$580.00
		Year 5 Establishment Maintenance			\$1740.00
24	Year 5 - Prescribed burn	2.5	acre	\$1451	\$3628.00
		Year 5 Prescribed Burn			\$3628.00
		PROJECT PRICE			\$26,278.00

Notes:

1. Quote assumes Great River Greening – Greening Solutions is completing all steps listed above. If the scope changes, Great River Greening reserves the right to alter the bid and resubmit.
2. Great River Greening – Greening Solutions does not warranty against acts of vandalism, severe drought, flooding, washouts, or damages caused by wildlife
3. This quote is good for a period of 30 days.
4. All work will be billed upon completion of tasks, with payment being due 30 days of receipt of invoice.

Quote prepared by: Todd Rexine

To accept this quote, sign here and return: _____
Sign Date

 Print

THANK YOU FOR YOUR BUSINESS AND SUPPORT!