

MINNESOTA DEPARTMENT OF TRANSPORTATION

CITY OF RAMSEY

ANOKA COUNTY, MINNESOTA

CITY IMPROVEMENT PROJECT #20-05

DESIGN DESIGNATION	RIVERDALE DR NW
STA 0+11.45 TO STA 52+71.39	
FUNTIONAL CLASSIFICATION	URBAN COLLECTOR
R-VALUE	50
ΣN-18	274,000
NO. & WIDTH OF TRAFFIC LANES	2 & 12 ft
NO. & WIDTH OF PARKING	2 & 8 ft
ADT (PRESENT YEAR) 2022	500
ADT (PROJECTED YEAR) 2042	4,500
HCA DT (PROJECTED YEAR) 2042	3.85%
DESIGN SPEED	30 mph
DESIGN LOAD	10 ton

CONSTRUCTION PLAN FOR: GRADING, BITUMINOUS PAVEMENT, CONCRETE CURB AND GUTTER, BITUMINOUS TRAIL, AND MUNICIPAL UTILITIES

SP 0202-121 LOCATED ON TH 10 FROM 490' WEST OF BOWERS DRIVE NW TO 1250' EAST OF BOWERS DRIVE NW

SP 0202-121; SAP 199-115-005 LOCATED ON RIVERDALE DRIVE FROM BOWERS DRIVE NW TO 1200' EAST OF LLAMA STREET NW

TH 10 (SP 0202-121)				RIVERDALE DRIVE NW (SP 0202-121; SAP 199-115-005)					
GROSS LENGTH	1740	FEET	0.330	MILES	GROSS LENGTH	5260	FEET	0.996	MILES
BRIDGE LENGTH		FEET		MILES	BRIDGE LENGTH		FEET		MILES
EXCEPTION LENGTH		FEET		MILES	EXCEPTION LENGTH		FEET		MILES
NET LENGTH	1740	FEET	0.330	MILES	NET LENGTH	5260	FEET	0.996	MILES

AGREEMENT NO. 1050030
CITY OF RAMSEY
SP 0202-121 (TH10=003)
STATE FUNDS
METRO DISTRICT

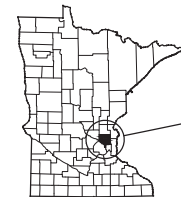
REF POINT FROM 219+00.138 TO 219+00.839

DESIGN DESIGNATION	OFF-ROAD TRAIL
STA 0+11.45 TO STA 52+71.39	
FUNTIONAL CLASSIFICATION	BIKE TRAIL
DESIGN SPEED	20 MPH
STOPPING SIGHT DISTANCE	
HEIGHT OF EYE =	4.5 FT
HEIGHT OF OBJECT =	0 FT

LENGTH AND DESCRIPTION BASED UPON TH 10 CENTERLINE

LENGTH AND DESCRIPTION BASED UPON PROPOSED RIVERDALE NW CENTERLINE

PROJECT LOCATION



CITY: RAMSEY
COUNTY: ANOKA
DISTRICT: METRO

MAP LEGEND

- PROJECT LIMITS
- AGGREGATE STOCKPILE SITE:
RAMSEY PUBLIC WORKS, 14199 JASPER STREET NW

NOTE: EXISTING UTILITY INFORMATION SHOWN ON THIS PLAN HAS BEEN PROVIDED BY THE UTILITY OWNER. THE CONTRACTOR SHALL FIELD VERIFY EXACT LOCATIONS PRIOR TO COMMENCING CONSTRUCTION AS REQUIRED BY STATE LAW. NOTIFY GOPHER STATE ONE CALL, 1-800-252-1166 OR 651-454-0002.

THE SUBSURFACE UTILITY INFORMATION IN THIS PLAN IS UTILITY QUALITY LEVEL D UNLESS OTHERWISE NOTED. THIS UTILITY LEVEL WAS DETERMINED ACCORDING TO THE GUIDELINES OF CI/ASCE 38-02, ENTITLED "STANDARD GUIDELINES FOR THE COLLECTION AND DEPICTION OF EXISTING SUBSURFACE UTILITY DATA."

BID LOCATION:

ONLINE BID THROUGH QUEST CDN

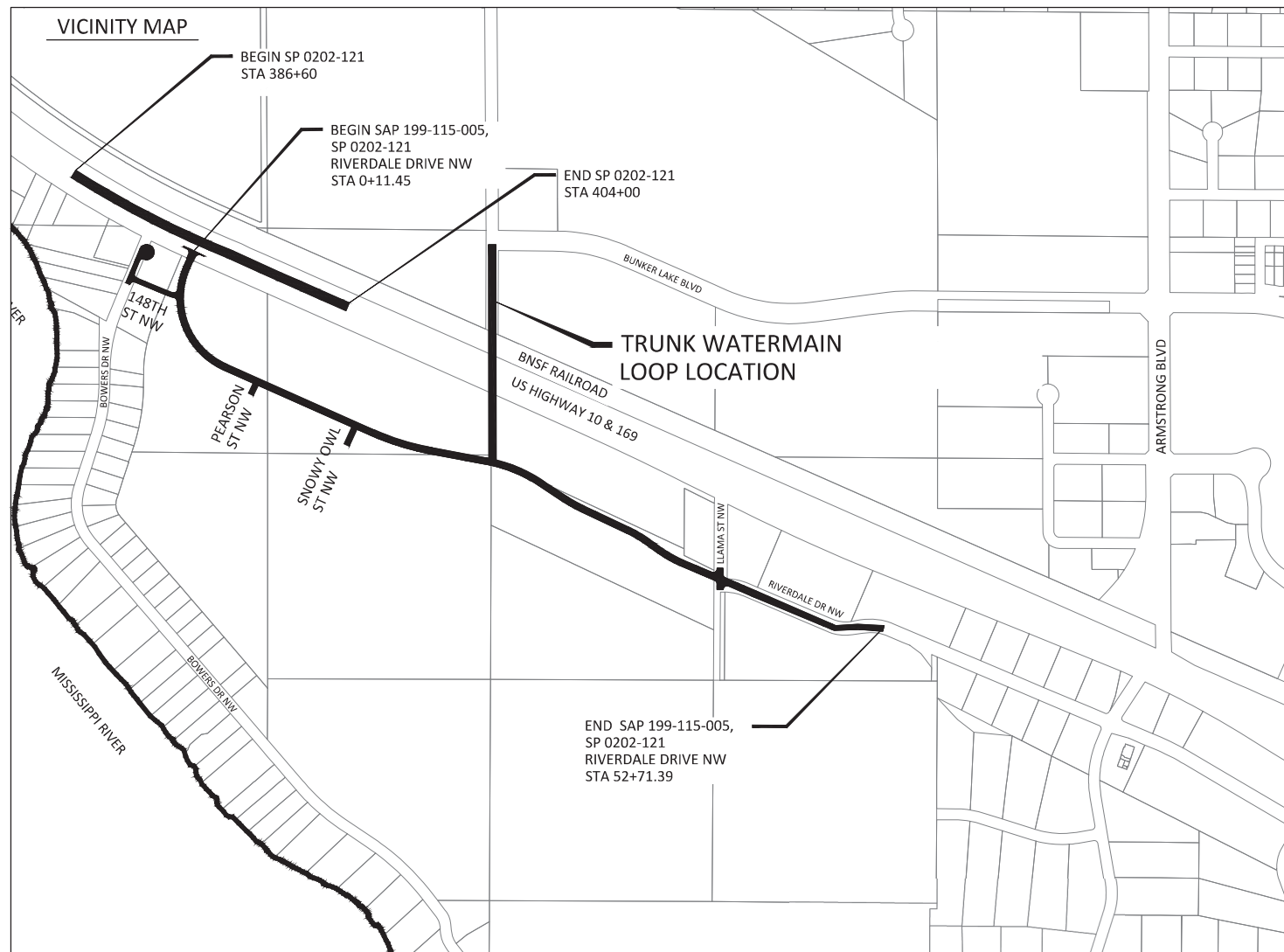
TYPICAL PLAN SCALE
UNLESS OTHERWISE NOTED:



BM=875.70
EX TNH @ SE CORNER
LLAMA ST & RIVERDALE DR

PROJECT DATUM:
HORIZONTAL: ANOKA COUNTY COORDINATES
(1996 ADJUSTMENT)
VERTICAL: NVD29

RECORD DRAWING INFORMATION
OBSERVER:
CONTRACTOR:
DATE:



MINN. PROJ. NO. _____ STATE FUNDS _____

--- GOVERNING SPECIFICATIONS ---
THE 2020 EDITION OF THE MINNESOTA DEPARTMENT OF TRANSPORTATION
"STANDARD SPECIFICATION FOR CONSTRUCTION" SHALL GOVERN.

ALL TRAFFIC CONTROL DEVICES AND SIGNING SHALL CONFORM AND BE INSTALLED IN ACCORDANCE WITH THE "MINNESOTA MANUAL ON UNIFORM TRAFFIC CONTROL DEVICES" (MN MUTCD) AND PART VI, "FIELD MANUAL" FOR TEMPORARY TRAFFIC CONTROL DEVICES.

SHEET NUMBER	SHEET TITLE
GENERAL	
1	TITLE SHEET
2 - 5	STATEMENT OF ESTIMATED QUANTITIES
CIVIL	
6 - 7	TYPICAL SECTIONS
8 - 10	CONSTRUCTION DETAILS
11 - 28	MnDOT STANDARD PLANS
29	ALIGNMENT TABULATIONS
30 - 32	EXISTING CONDITIONS & REMOVAL PLAN
33 - 35	STORMWATER POLLUTION PREVENTION PLAN
36 - 42	EROSION CONTROL & TURF ESTABLISHMENT PLAN
43 - 44	WATERMAIN PLAN & PROFILE
45 - 53	STREET PLAN & PROFILE
54	STREET PLAN
55	CABLE BARRIER PLAN
56 - 58	STORM SEWER LEADS
59 - 63	INTERSECTION DETAILS
64 - 68	SIGNAGE & STRIPING PLAN
69 - 76	MnDOT STANDARD PLANS SIGNS
77 - 113	CROSS SECTIONS

THIS PLAN SET CONTAINS 113 SHEETS.

I HEREBY CERTIFY THAT THIS PLAN WAS PREPARED BY ME OR UNDER MY DIRECT SUPERVISION AND THAT I AM A DULY LICENSED PROFESSIONAL ENGINEER UNDER THE LAWS OF THE STATE OF MINNESOTA.

Kevin P. Kielb
Kevin P. Kielb LIC. NO. 23211 DATE: 05/23/2022

Bruce R. ...
Approved: City of RAMSEY Engineer DATE 05/27/2022

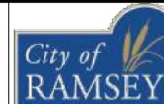
Julie Drael For DATE 6/20/2022
DISTRICT STATE AID ENGINEER: REVIEWED FOR COMPLIANCE WITH STATE AID RULES/POLICY

Julie Drael For DATE 6/20/2022
APPROVED FOR STATE AID FUNDING: STATE AID ENGINEER

APPROVED: **Michael Barnes** Digitally signed by Michael Barnes
Date: 2022.06.20 20:51:54 -05'00' DATE _____
DISTRICT TRANSPORTATION ENGINEER



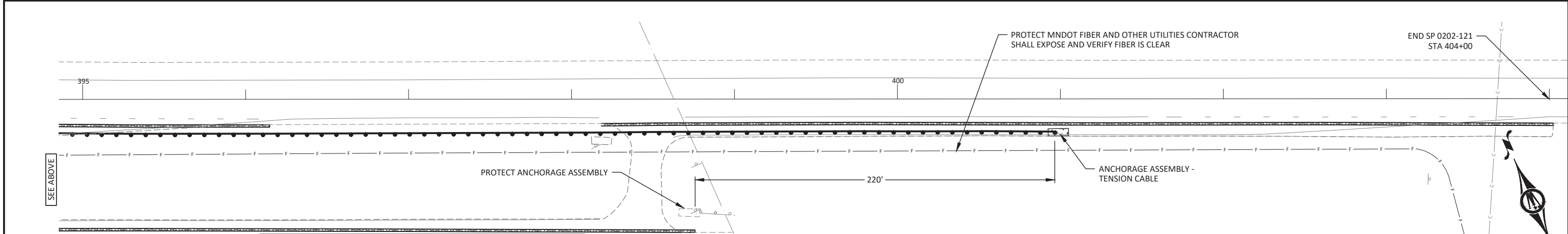
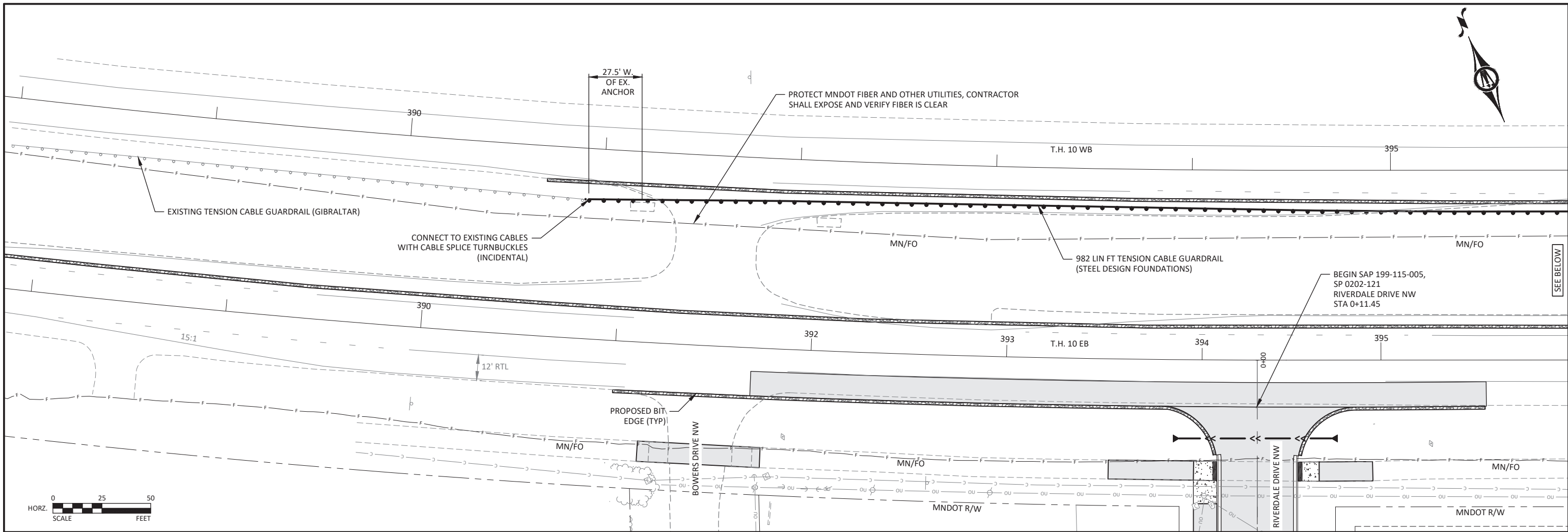
7533 SUNWOOD DR NW, SUITE 206
RAMSEY, MINNESOTA 55303
Phone: (763) 433-2851
Email: Ramsey@bolton-menk.com
www.bolton-menk.com



DESIGNED	NO.	ISSUED FOR	DATE
ZFL			
ZFL			
KPK			
CLIENT PROJ. NO. 20-05			

CITY OF RAMSEY, MINNESOTA
2022 RIVERDALE DRIVE EXTENSION SP 0202-121 (TH 10=003)
(SAP 199-115-005)
TITLE SHEET

SHEET
1
OF
113



SEE ABOVE

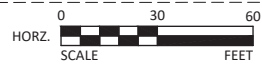
- GUARDRAIL NOTES:**
1. CONTRACTOR SHALL TRAFFIC CONTROL PLANS TO THE ENGINEER FOR REVIEW AND APPROVAL.
 2. MODIFY POST SPACING TO AVOID HITTING UTILITIES AND SUBSURFACE DRAINS. THE CONTRACTOR SHALL BE RESPONSIBLE FOR THE COST OF REPLACING ANY DAMAGED EDGE DRAINS, DRAINAGE PIPES AND/OR UTILITIES. MAXIMUM POST SPACING IS 10 FEET FROM CENTER OF POST TO CENTER OF POST.
 3. POST FOUNDATIONS SHALL BE FLUSH WITH THE GROUNDLINE. POSTS SHALL BE CONSTRUCTED PLUMB IN ACCORDANCE WITH THE MANUFACTURER'S RECOMMENDATIONS.
 4. ANY REQUIRED MOWING FOR TENSION CABLE GUARDRAIL CONSTRUCTION IS INCIDENTAL.
 5. ANY REQUIRED GRADING SHALL BE DONE BEFORE GUARDRAIL POSTS ARE SET.

- LEGEND**
- BIT PAVEMENT
 - AGGREGATE SURFACING
 - TENSION CABLE GUARDRAIL

- CURB & GUTTER
- CONSTRUCTION LIMITS
- IN PLACE STORM SEWER PIPE
- IN PLACE SANITARY SEWER PIPE
- IN PLACE WATERMAIN
- IN PLACE HYDRANT

- EXISTING CURB & GUTTER
- EXISTING EASEMENT LINE
- EXISTING RIGHT-OF-WAY
- EXISTING CONTOUR MINOR
- EXISTING CONTOUR MAJOR
- PROPOSED CONTOUR MINOR
- PROPOSED CONTOUR MAJOR
- UNDERGROUND GAS

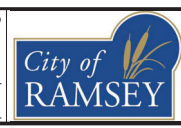
- UNDERGROUND COMM
- OVERHEAD UTILITY
- FIBER OPTIC LINE
- TREE-CONIFEROUS
- TREE-DECIDUOUS
- EXISTING TRAFFIC SIGN
- WET WELL
- VALVE VAULT
- FIRE HYDRANT
- VALVE
- TRANSFORMER-ELECTRIC
- HANDHOLE
- POLE-UTILITY
- GUY WIRE ANCHOR
- PEDESTAL-COMMUNICATION
- PEDESTAL-ELECTRIC



© Pearson & Mirek, Inc. 2022. All Rights Reserved. File: RAMSEY_2022_06_15_11252681.dwg 6/15/2022 11:36:35 AM

I HEREBY CERTIFY THAT THIS PLAN, SPECIFICATION, OR REPORT WAS PREPARED BY ME OR UNDER MY DIRECT SUPERVISION AND THAT I AM A DULY LICENSED PROFESSIONAL ENGINEER UNDER THE LAWS OF THE STATE OF MINNESOTA.

PHILLIP G. BERGEM
18568
DATE



DESIGNED	PGB	NO.	ISSUED FOR	DATE
DRAWN	ZFL			
CHECKED	PGB			
CLIENT PROJ. NO.	20-05			

CITY OF RAMSEY, MINNESOTA
2022 RIVERDALE DRIVE EXTENSION SP 0202-121 (TH 10)
(SAP 199-115-005)

TENSION CABLE GUARDRAIL PLAN

SHEET
55
OF
113