

CITY OF RAMSEY

AUTUMN HEIGHTS STREET RECONSTRUCTIONS

CITY IMPROVEMENT PROJECT NO. 22-02

GOVERNING SPECIFICATIONS

THE 2020 EDITION OF THE MINNESOTA DEPARTMENT OF TRANSPORTATION "STANDARD SPECIFICATIONS FOR CONSTRUCTION" SHALL GOVERN.

ALL FEDERAL, STATE AND LOCAL LAWS, REGULATIONS AND ORDINANCES SHALL BE COMPLIED WITH IN THE CONSTRUCTION OF THIS PROJECT.

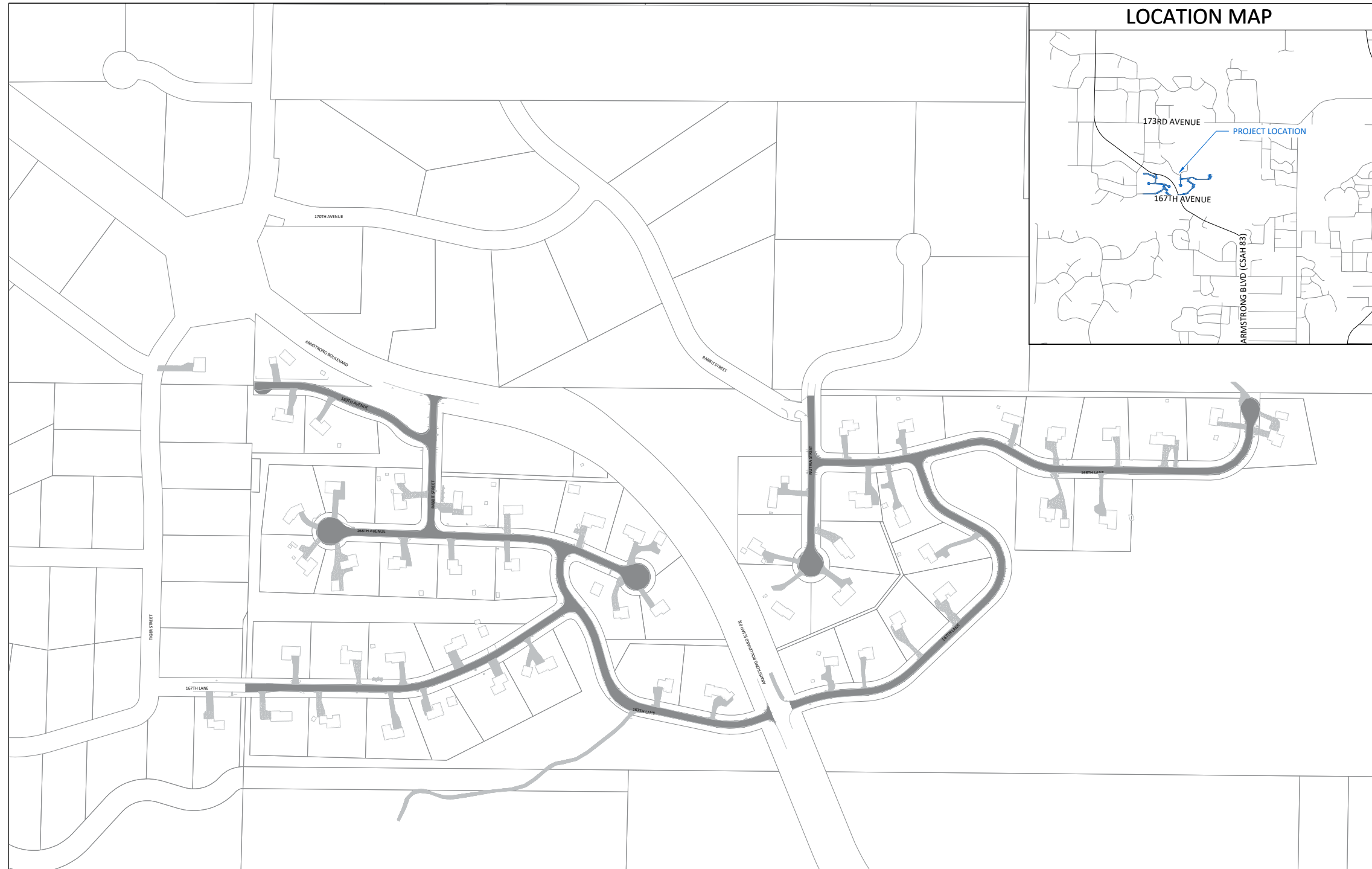
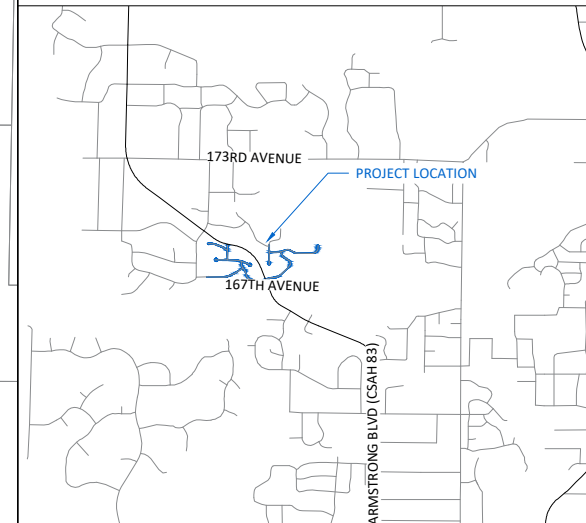
ALL TRAFFIC CONTROL DEVICES AND SIGNING SHALL CONFORM TO THE MINNESOTA MANUAL ON UNIFORM TRAFFIC CONTROL DEVICES, INCLUDING THE FIELD MANUAL FOR TEMPORARY TRAFFIC CONTROL ZONE LAYOUTS.

SHEET INDEX

THIS PLAN CONTAINS 59 SHEETS

SHEET No.	DESCRIPTION
01	TITLE SHEET
02	STATEMENT OF ESTIMATED QUANTITIES
03	DETAILS
04	ALIGNMENT LAYOUT WEST
05	ALIGNMENT LAYOUT EAST
06-07	SWPPP
08-11	EROSION CONTROL WEST
12-14	EROSION CONTROL EAST
15-21	EXISTING CONDITIONS & REMOVALS WEST
22-27	EXISTING CONDITIONS & REMOVALS EAST
28-34	STREET & STORM WEST
35-40	STREET & STORM EAST
41-50	CROSS SECTIONS WEST
51-59	CROSS SECTIONS EAST

LOCATION MAP



LEGEND

	SANITARY MANHOLE		Easement - Drainage & Utility
	STORM SEWER MANHOLE		Easement - Roadway
	CATCH BASIN MANHOLE		LOT LINE
	CATCH BASIN		ELECTRIC LINE
	CATCH BASIN - GROUT		ELECTRIC LINE - BURIED
	CATCH BASIN - RESET		ELECTRIC LINE - OVERHEAD
	FLARED END SECTION		GAS LINE
	CULVERT END SECTION		TELECOMMUNICATION LINE
	HYDRANT		TELECOMM - OVERHEAD
	VALVE		FIBER OPTIC LINE
	TREE - CONIFEROUS		TREE LINE
	TREE - DECIDUOUS		LANDSCAPE
	SHRUB		RETAINING WALL
	LIGHT POLE		FENCE
	SIGN		SILT FENCE
	MAILBOX		WATERMAIN
	PEDESTAL - TELECOM		SANITARY SEWER
	PEDESTAL - ELECTRIC		STORM SEWER
	HAND HOLE		DRAIN TILE
	DRIVE - BITUMINOUS		LANDSCAPE - ROCK
	DRIVE - CONCRETE		LANDSCAPE - MULCH
	DRIVE - GRAVEL		LANDSCAPE - RIP RAP
	CONCRETE WALK		PR. DRIVE - BITUMINOUS
	BITUMINOUS TRAIL		PR. DRIVE - CONCRETE
	REMOVE BIT PAVE		PR. DRIVE - GRAVEL
	REMOVE CONCRETE PAVE		PR. CONCRETE WALK
	REMOVE GRAVEL SURFACE		PR. CONCRETE
	MILL BIT PAVEMENT		PR. SEEDING AREA
	RECLAIM BIT PAVEMENT		

I hereby certify that this plan, specification, or report was prepared by me or under my direct supervision and that I am a duly Licensed Professional Engineer under the laws of the State of Minnesota.

JOE FERIANCEK, P.E. 57095 DATE --/--/--
 CIVIL ENGINEER II LIC. NO.

DATE	REVISION

SHEET 01 OF 59 SHEETS

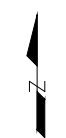
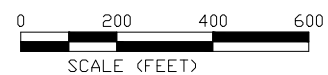
CITY OF RAMSEY
 7550 SUNWOOD DRIVE
 RAMSEY, MN 55303
 (763) 427-1410 FAX (763) 433-9898

THE SUBSURFACE UTILITY INFORMATION IN THIS PLAN IS UTILITY QUALITY LEVEL D. THIS QUALITY LEVEL WAS DETERMINED ACCORDING TO THE GUIDELINES OF CI/ASCE 38-02, ENTITLED "STANDARD GUIDELINES FOR THE COLLECTION AND DEPICTION OF EXISTING SUBSURFACE UTILITY DATA."

NOTE: EXISTING UTILITY INFORMATION SHOWN ON THIS PLAN HAS BEEN PROVIDED BY THE UTILITY OWNER. THE CONTRACTOR SHALL FIELD VERIFY EXACT LOCATIONS PRIOR TO COMMENCING CONSTRUCTION AS REQUIRED BY STATE LAW. NOTIFY GOPHER STATE ONE CALL 1-800-252-1166 OR 651-454-0002



Call before you dig
 811
 651 454-0002 Metro
 800 252-1166 Outstate
www.gopherstateonecall.org



Jun 19, 2022 - 12:43pm
 G:\Engineering\AutoCad Dwg\Projects A-M\Autumn Heights Reconstruction 22-02\Plan Drawings\22-02 Title Sheet.dwg