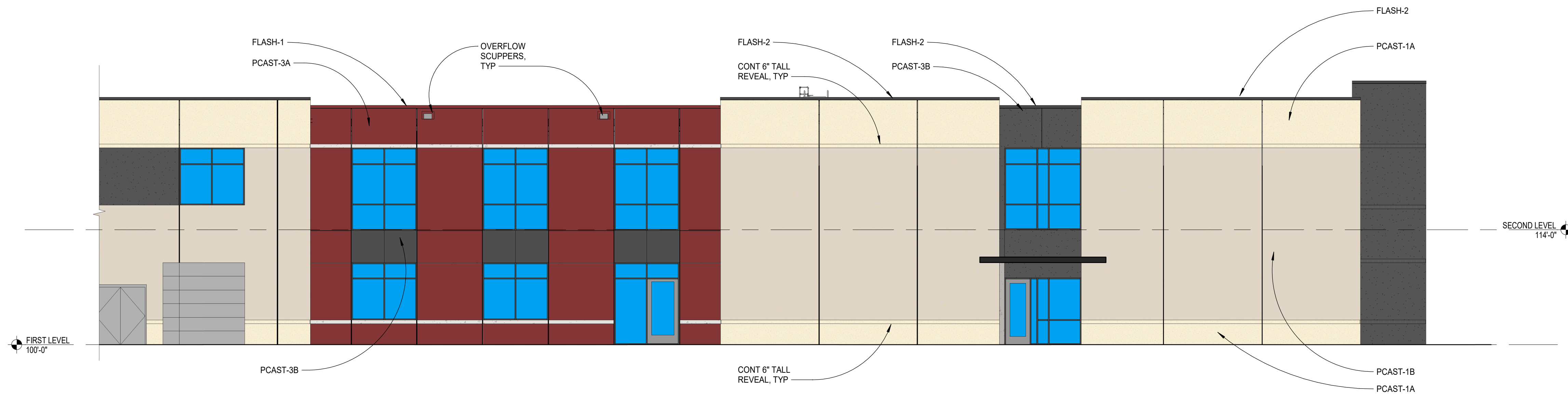


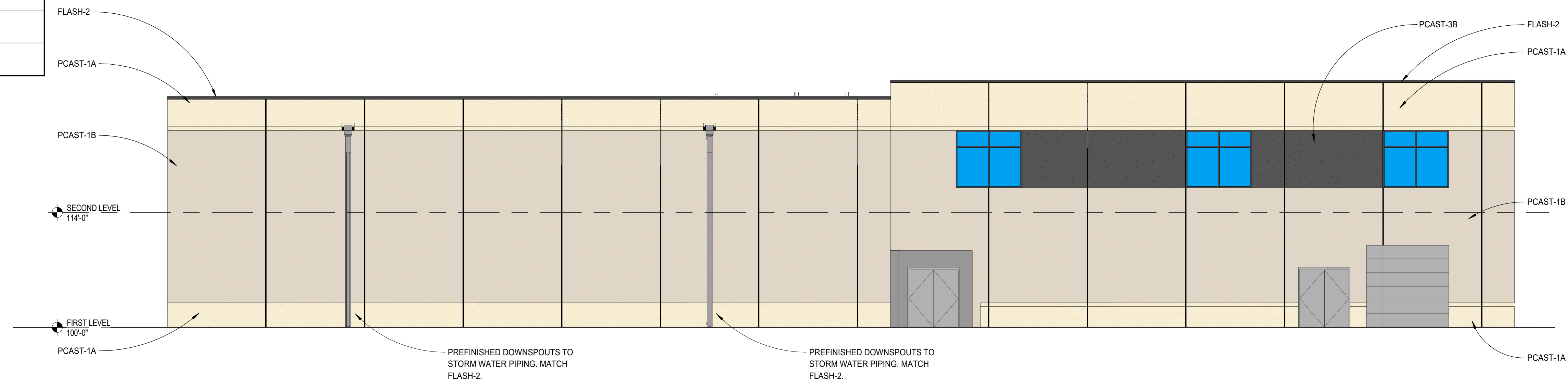
# EXTERIOR MATERIAL FINISH SCHEDULE

MATERIAL ID	MATERIAL	MANUFACTURER	FINISH	COLOR	LOCATION
BRICK-1	FACE BRICK	TBD	TBD	BUFF TO MATCH PCAST-1A	TRASH ENCLOSURE
PCAST-1A	12" INSULATED PRECAST CONCRETE WALL PANELS	MOLIN	AS CAST WITH LIGHT ETCH	LIGHT BUFF	SEE ELEVATIONS
PCAST-1B	12" INSULATED PRECAST CONCRETE WALL PANELS	MOLIN	EXPOSED AGGREGATE	LIGHT BUFF	SEE ELEVATIONS
PCAST-3A	12" INSULATED PRECAST CONCRETE WALL PANELS	MOLIN	FORM SIDE WITH PENETRATING STAIN FINISH	RED	SEE ELEVATIONS
PCAST-3B	12" INSULATED PRECAST CONCRETE WALL PANELS	MOLIN	FORM SIDE WITH PENETRATING STAIN FINISH	BLACK / CHARCOAL	SEE ELEVATIONS
MP-1	METAL PANEL	ALPOLIC MATERIALS	KYNAR	RED	SEE ELEVATIONS
MP-2	METAL PANEL	ALPOLIC MATERIALS	KYNAR	BLACK	SEE ELEVATIONS
FLASH-1	CAP FLASHING	TBD	KYNAR	RED TO MATCH MP-1	SEE ELEVATIONS
FLASH-2	CAP FLASHING	TBD	KYNAR	BLACK TO MATCH MP-2	SEE ELEVATIONS
AFS FLASH-1	WINDOW SILL FLASHING	TBD	KYNAR	BLACK TO MATCH AFS-1	SEE ELEVATIONS
AFS-1	ALUMINUM WINDOW FRAMES	KAWNEER	ANODIZED	BLACK NO. 29	SEE ELEVATIONS

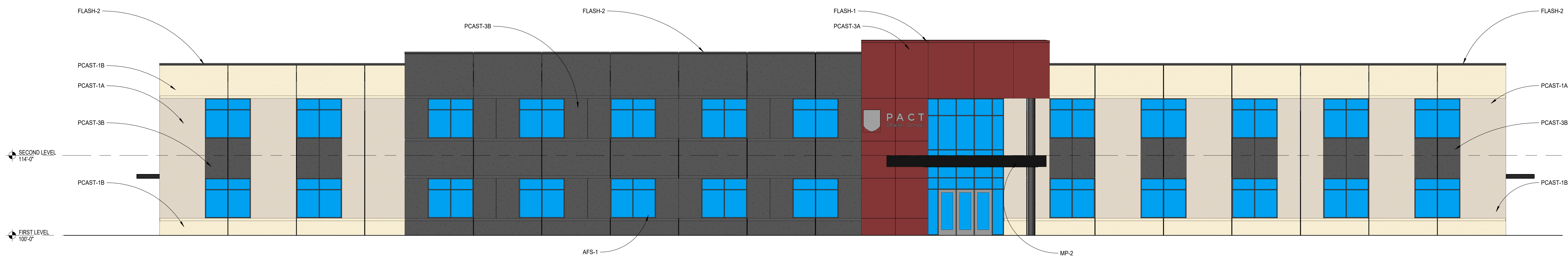
NOTE: THE "BASIS OF DESIGN" MATERIALS FOR THE PROJECT ARE LISTED ON THE SCHEDULE ABOVE. SEE SPECIFICATIONS FOR ADDITIONAL MATERIAL INFORMATION AND OTHER APPROVED SUBSTITUTIONS.



3 WEST ELEVATION - MEDIA CENTER  
1/8" = 1'-0"



2 WEST ELEVATION - RECEIVING  
1/8" = 1'-0"



1 SOUTH ELEVATION - MAIN ENTRANCE  
1/8" = 1'-0"

NOT FOR CONSTRUCTION

Issues and Revisions:	
PRELIM PRICING	03-07-22
LAND USE APP	04-28-22
CITY	06-10-22
RE-SUBMITTAL	

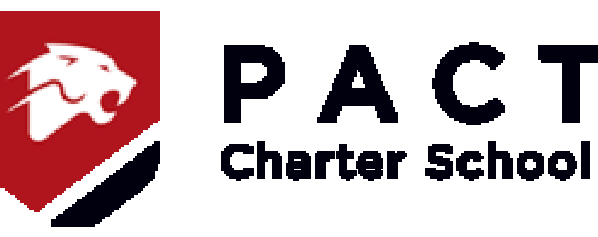
Commission No.	41815-22000
Drawn by:	EK
Checked by:	RDL

SHEET

A3.1



POPE ARCHITECTS, INC.  
1295 BANDANA BLVD N, SUITE 200  
ST. PAUL, MN 55108-2735  
(651) 642-9200 | FAX (651) 642-1101  
www.popearch.com



PACT CHARTER SCHOOL  
7633 161ST AVENUE  
RAMSEY, MN 55303

NOT FOR CONSTRUCTION

EXTERIOR ELEVATIONS

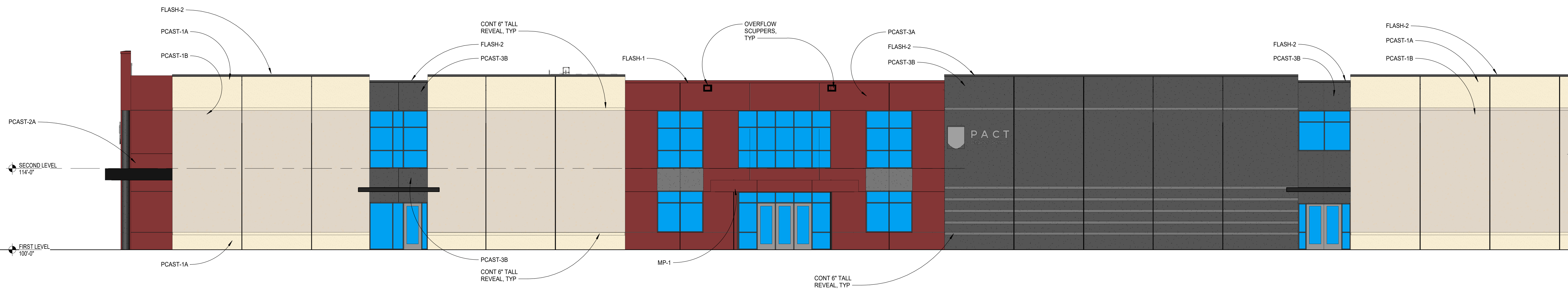
Issues and Revisions:	
PRELIM PRICING	03-07-22
LAND USE APP	04-28-22
CITY	06-10-22
RE-SUBMITTAL	

Commission No.	41815-22000
Drawn by	EK
Checked by	RDL

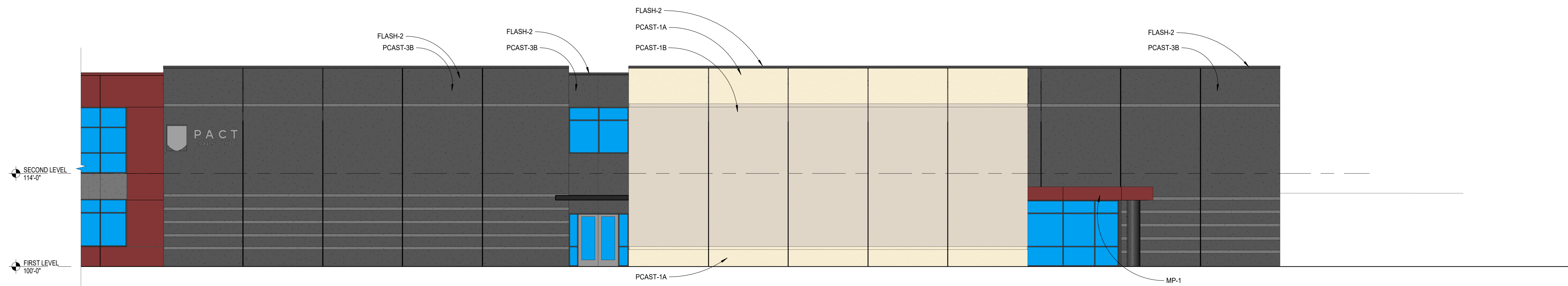
SHEET

A3.2

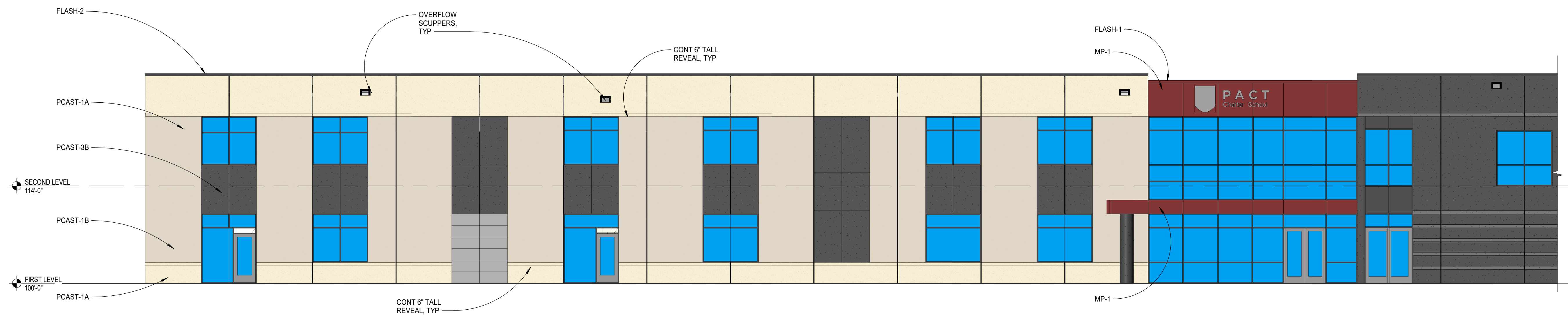
1" = 1/8" SCALE  
© 2022 POPE ARCHITECTS, INC. PACT\_RDL\_0101.rvt  
6/10/2022 1:04:41 PM



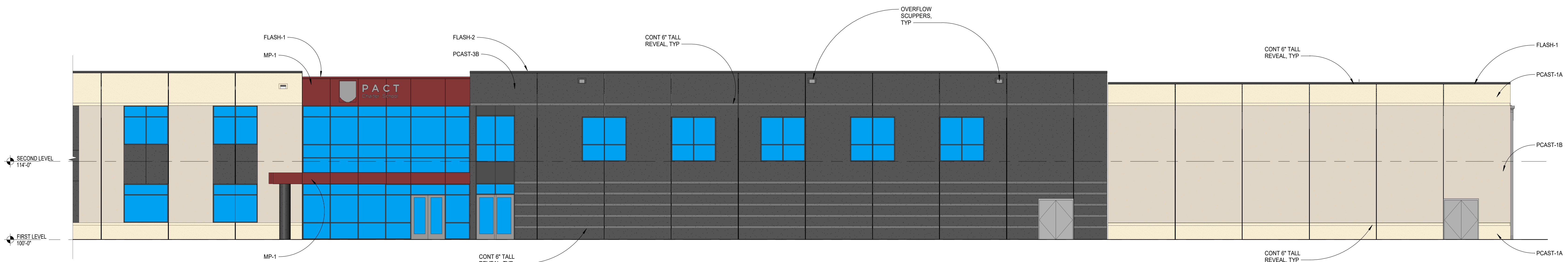
4 EAST ELEVATION - STUDENT ENTRANCE  
A3.2 1/8" = 1'-0"



3 EAST ELEVATION AUDITORIUM  
A3.2 1/8" = 1'-0"



2 NORTH ELEVATION - CAFETERIA  
A3.2 1/8" = 1'-0"



1 NORTH ELEVATION - GYM  
A3.2 1/8" = 1'-0"

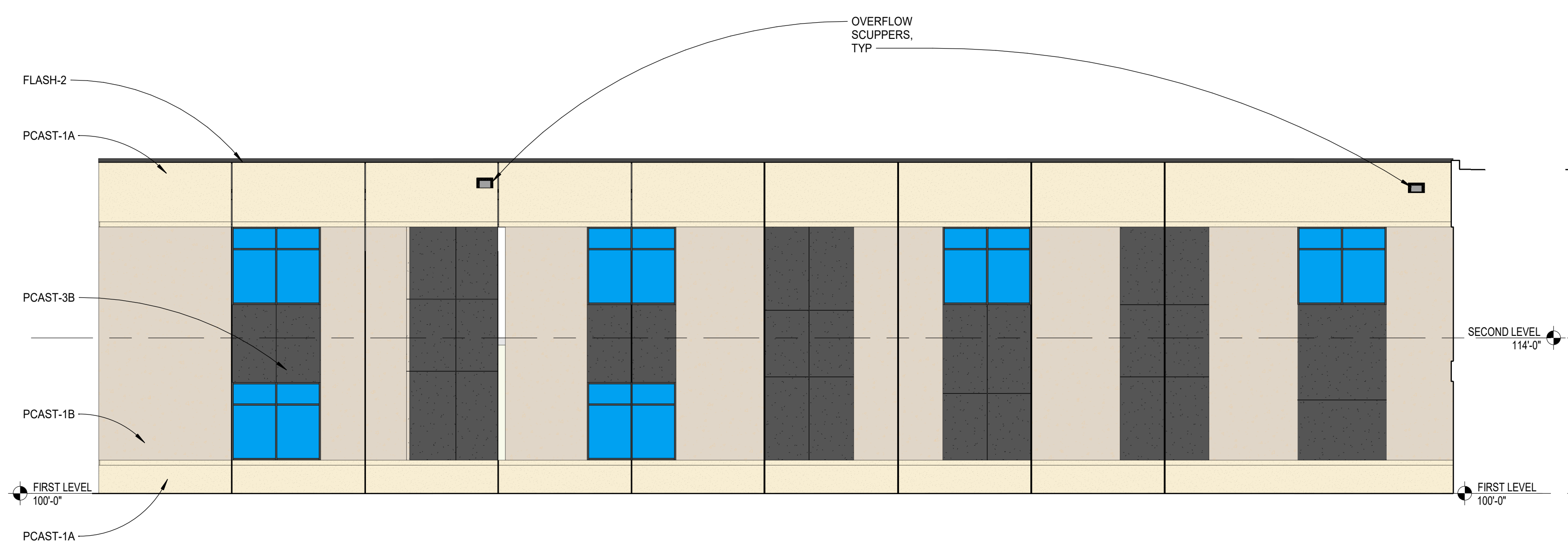


POPE ARCHITECTS, INC.  
 1295 BANDANA BLVD N, SUITE 200  
 ST. PAUL, MN 55108-2735  
 (651) 642-9200 | FAX (651) 642-1101  
 www.popearch.com

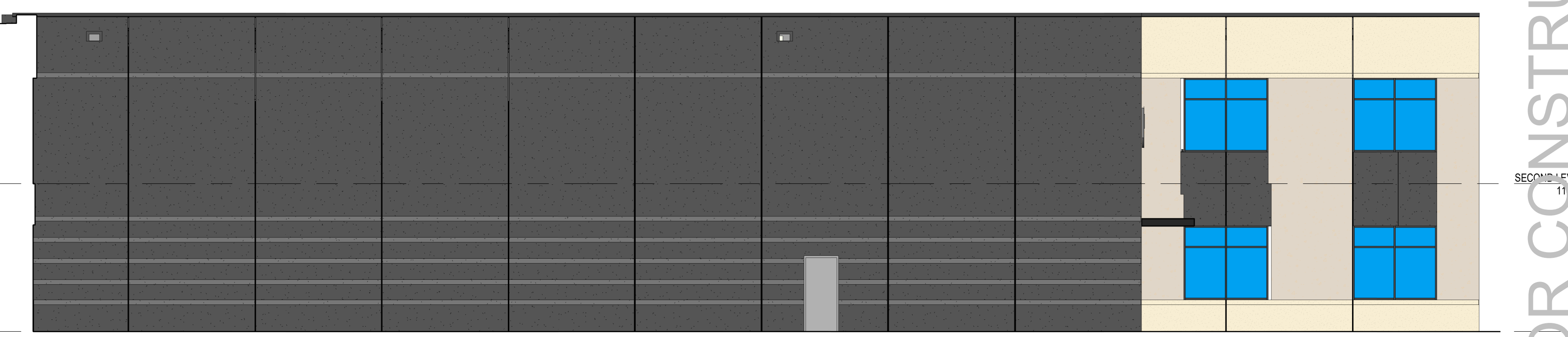


PACT CHARTER  
 SCHOOL  
 7633 161ST AVENUE  
 RAMSEY, MN 55303

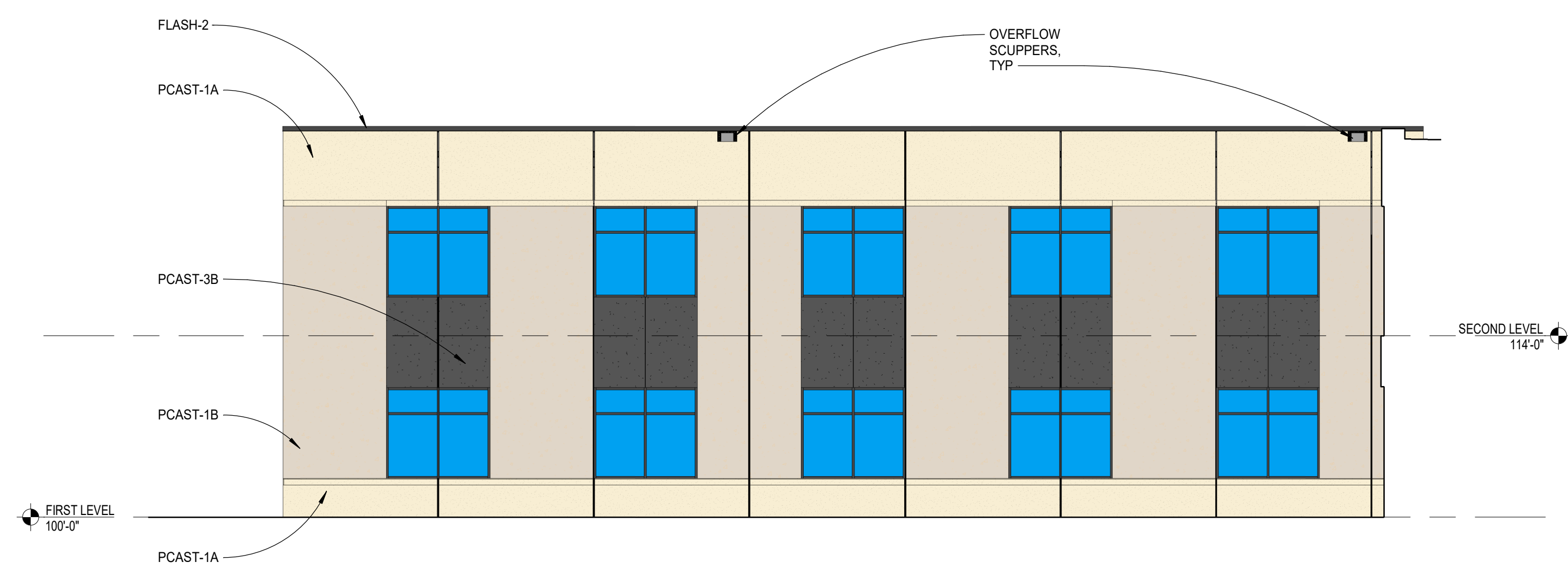
NOT FOR CONSTRUCTION



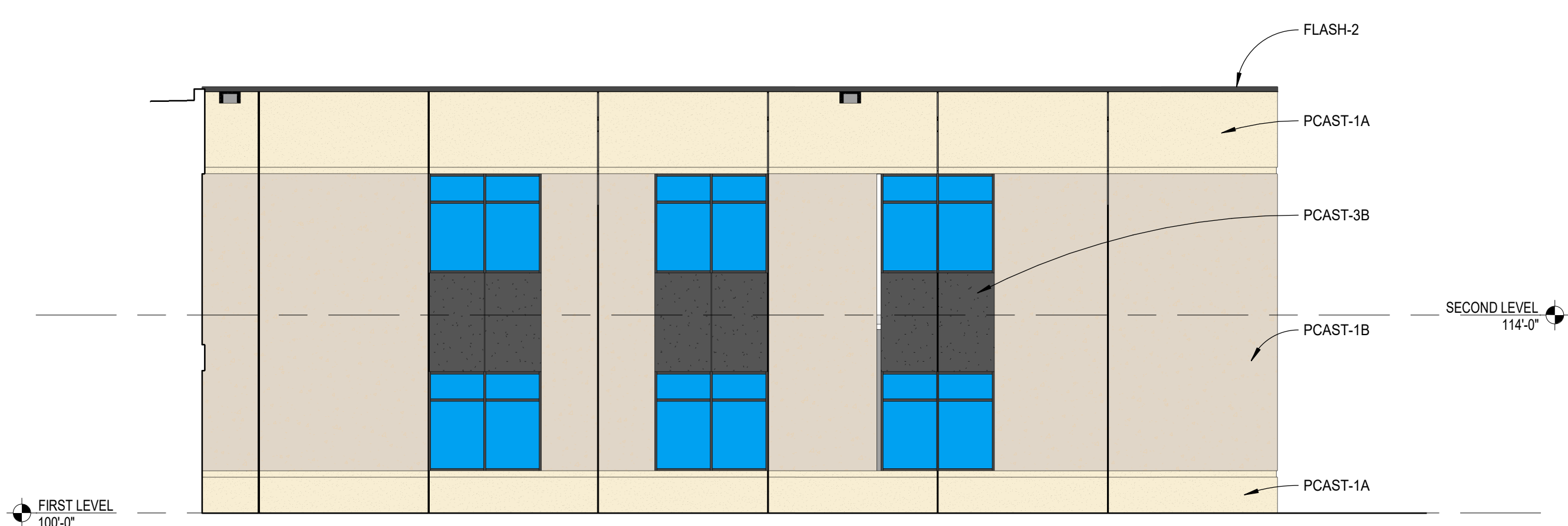
4 COURTYARD ELEVATION  
 A3.3 1/8" = 1'-0"



3 COURTYARD ELEVATION  
 A3.3 1/8" = 1'-0"



2 COURTYARD ELEVATION  
 A3.3 1/8" = 1'-0"



1 COURTYARD ELEVATION  
 A3.3 1/8" = 1'-0"

EXTERIOR ELEVATIONS

Issues and Revisions:	
LAND USE APP	04-28-22
CITY	06-10-22
RE-SUBMITTAL	

Commission No.	41815-22000
Drawn by	EK
Checked by	RDL

SHEET

A3.3