

SYMBOL LEGEND

	NEW LIGHT-DUTY BITUMINOUS PAVEMENT SEE DETAIL		NEW HEAVY-DUTY CONCRETE PAVEMENT SEE DETAIL
	NEW HEAVY-DUTY BITUMINOUS PAVEMENT SEE DETAIL		NEW GRAVEL/AG-LIME SEE DETAIL
	NEW TRAIL BITUMINOUS PAVEMENT SEE DETAIL		NEW CONCRETE STOOP/APRON SEE ARCH./STL.
	NEW LIGHT-DUTY CONCRETE PAVEMENT SEE DETAIL		NEW ATHLETIC TRACK PAVING SEE DETAIL
			NATIVE GRASS AND WILDFLOWER PLANTINGS
	TREE PROTECTION PROPERTY LINE		RIGHT OF WAY LINE
	EASEMENT LINE		SETBACK LINE
	WETLAND		WETLAND BUFFER

NOTE: THE CONCRETE JOINTS ARE SHOWN ONLY FOR GENERAL REFERENCE TO SIGNIFY LIGHT-DUTY CONCRETE PAVEMENT. ACTUAL JOINTS SHALL BE CONSTRUCTED PER PROJECT SPECIFICATIONS.

KEY NOTES

- 1 NEW B612 CONCRETE CURB AND GUTTER
- 2 NEW ACCESSIBLE CURB RAMP
- 3 NEW LIGHT-DUTY CONCRETE PAVEMENT
- 4 NEW HEAVY-DUTY CONCRETE PAVEMENT
- 5 SEE DUST COLLECTOR, SEE MECH.
- 6 NEW TRANSFORMER, SEE ELEC.
- 7 NEW PARKING SIGN AND POST
 A ADA PARKING
 B ADA ACCESS AISLE
 C ADA LOADING
 D STOP
 E DO NOT ENTER
 F BUSES ONLY
 G MOTORCYCLE PARKING
 H LANE USE SIGN
 I FIELD ACCESS ONLY, NO EXIT
- 8 NEW PARKING SIGN, POST, AND BOLLARD
 A ADA PARKING
 B ADA ACCESS AISLE
- 9 NEW DUMPSTER ENCLOSURE, SEE ARCH
- 10 NEW 3.5' TALL CHAINLINK FENCING
- 11 NEW 6' TALL CHAINLINK FENCING
- 12 NEW BIKE RACK
- 13 NEW CONCRETE STAIRS
- 14 NEW MONUMENT SIGN
- 15 NEW FLAGPOLE
- 16 NEW SCOREBOARD

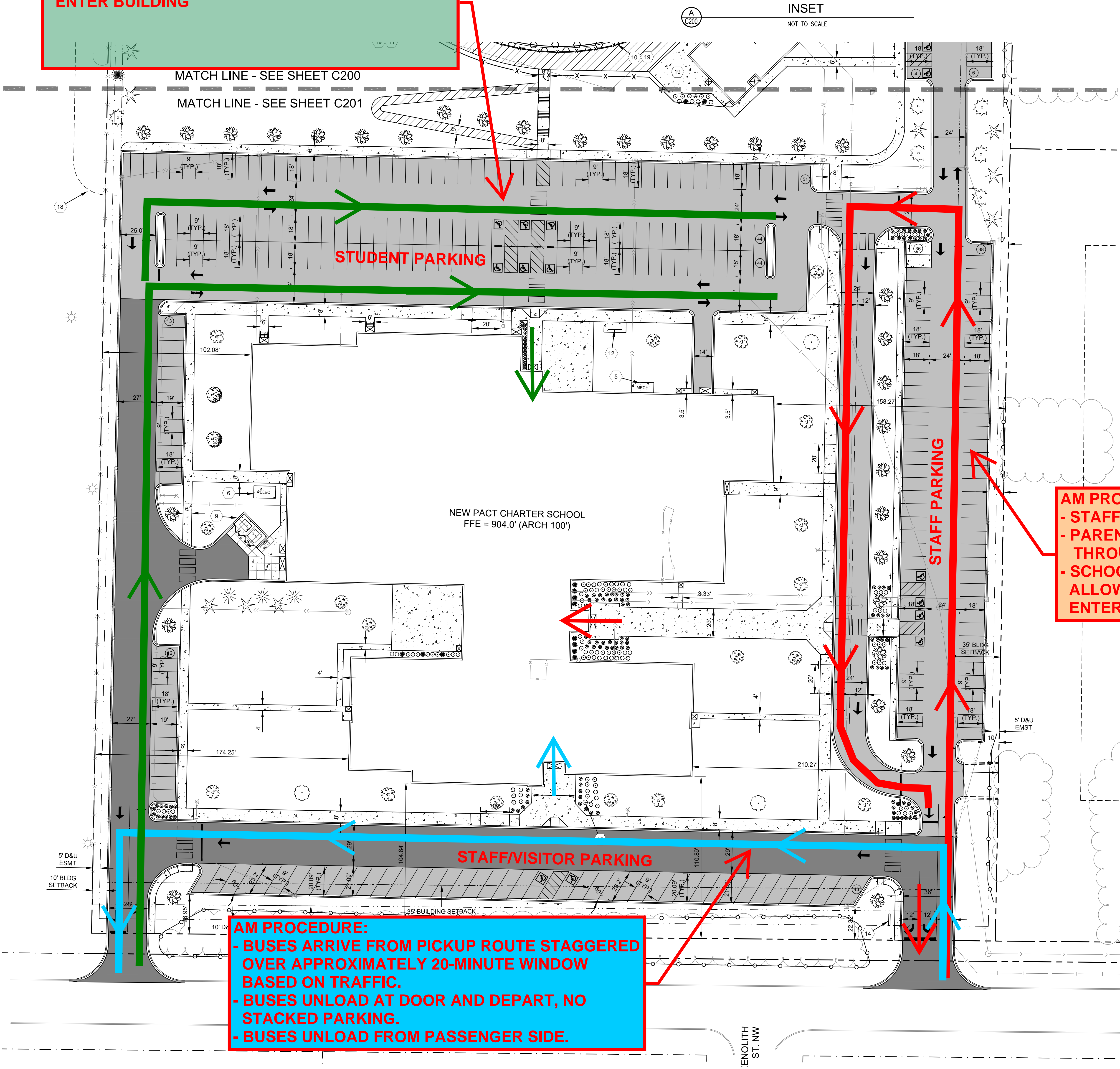
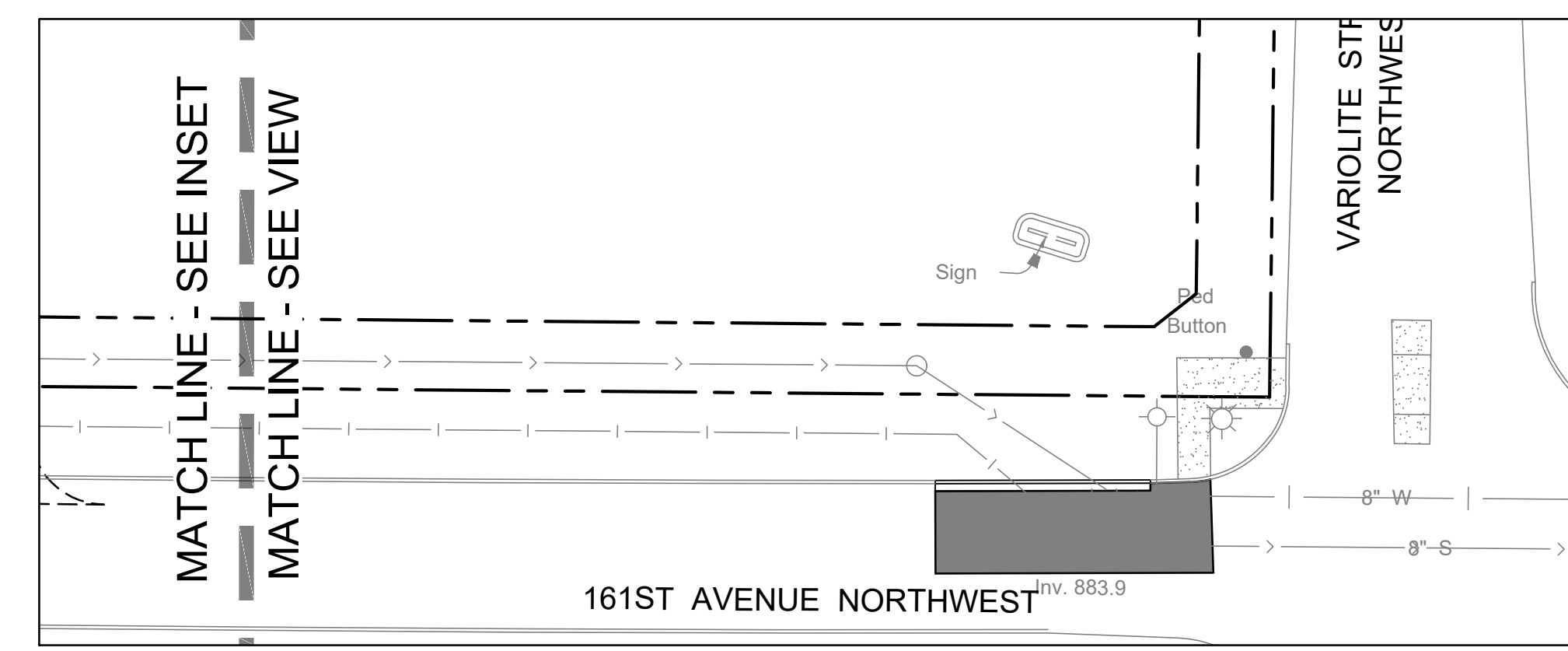
AM PROCEDURE:
 - STUDENTS ARRIVE AND PARK
 - SCHOOL TO DETERMINE WHEN STUDENTS CAN ENTER BUILDING

AM PROCEDURE:
 - STAFF ARRIVE AND ENTER SCHOOL.
 - PARENTS QUEUE FROM END OF DROP OFF LANE THROUGH PARKING LOT.
 - SCHOOL TO DETERMINE WHEN PARENTS ARE ALLOWED TO ARRIVE AND WHEN STUDENTS CAN ENTER BUILDING

SCHOOL TRAFFIC CIRCULATION - AM

- STUDENT DROP OFF
- BUSES
- STUDENT PARKING

AM PROCEDURE:
 - BUSES ARRIVE FROM PICKUP ROUTE STAGGERED OVER APPROXIMATELY 20-MINUTE WINDOW BASED ON TRAFFIC.
 - BUSES UNLOAD AT DOOR AND DEPART, NO STACKED PARKING.
 - BUSES UNLOAD FROM PASSENGER SIDE.



LAND USE APPLICATION SET - NOT FOR CONSTRUCTION



MATCH LINE - SEE INSET
 MATCH LINE - SEE VIEW

0 15 30 60
 1" = 12'

SYMBOL LEGEND

	NEW LIGHT-DUTY BITUMINOUS PAVEMENT SEE DETAIL		NEW HEAVY-DUTY CONCRETE PAVEMENT SEE DETAIL
	NEW HEAVY-DUTY BITUMINOUS PAVEMENT SEE DETAIL		NEW GRAVEL/AG-LIME SEE DETAIL
	NEW TRAIL BITUMINOUS PAVEMENT SEE DETAIL		NEW CONCRETE STOOP/APRON SEE ARCH./STL.
	NEW LIGHT-DUTY CONCRETE PAVEMENT SEE DETAIL		NEW ATHLETIC TRACK PAVING SEE DETAIL
			NATIVE GRASS AND WILDFLOWER PLANTINGS
	TREE PROTECTION PROPERTY LINE		RIGHT OF WAY LINE
	EASEMENT LINE		SETBACK LINE
	WETLAND		WETLAND BUFFER

NOTE: THE CONCRETE JOINTS ARE SHOWN ONLY FOR GENERAL REFERENCE TO SIGNIFY LIGHT-DUTY CONCRETE PAVEMENT. ACTUAL JOINTS SHALL BE CONSTRUCTED PER PROJECT SPECIFICATIONS.

KEY NOTES

- 1 NEW B612 CONCRETE CURB AND GUTTER
- 2 NEW ACCESSIBLE CURB RAMP
- 3 NEW LIGHT-DUTY CONCRETE PAVEMENT
- 4 NEW HEAVY-DUTY CONCRETE PAVEMENT
- 5 SEE DUST COLLECTOR, SEE MECH.
- 6 NEW TRANSFORMER, SEE ELEC.
- 7 NEW PARKING SIGN AND POST
 - A: ADA PARKING
 - B: ADA ACCESS AISLE
 - C: ADA LOADING
 - D: STOP
 - E: DO NOT ENTER
 - F: BUSES ONLY
 - G: MOTORCYCLE PARKING
 - H: LANE USE SIGN
 - I: FIELD ACCESS ONLY, NO EXIT
- 8 NEW PARKING SIGN, POST, AND BOLLARD
 - A: ADA PARKING
 - B: ADA ACCESS AISLE
- 9 NEW DUMPSTER ENCLOSURE, SEE ARCH
- 10 NEW 3.5' TALL CHAINLINK FENCING
- 11 NEW 6' TALL CHAINLINK FENCING
- 12 NEW BIKE RACK
- 13 NEW CONCRETE STAIRS
- 14 NEW MONUMENT SIGN
- 15 NEW FLAGPOLE
- 16 NEW SCOREBOARD

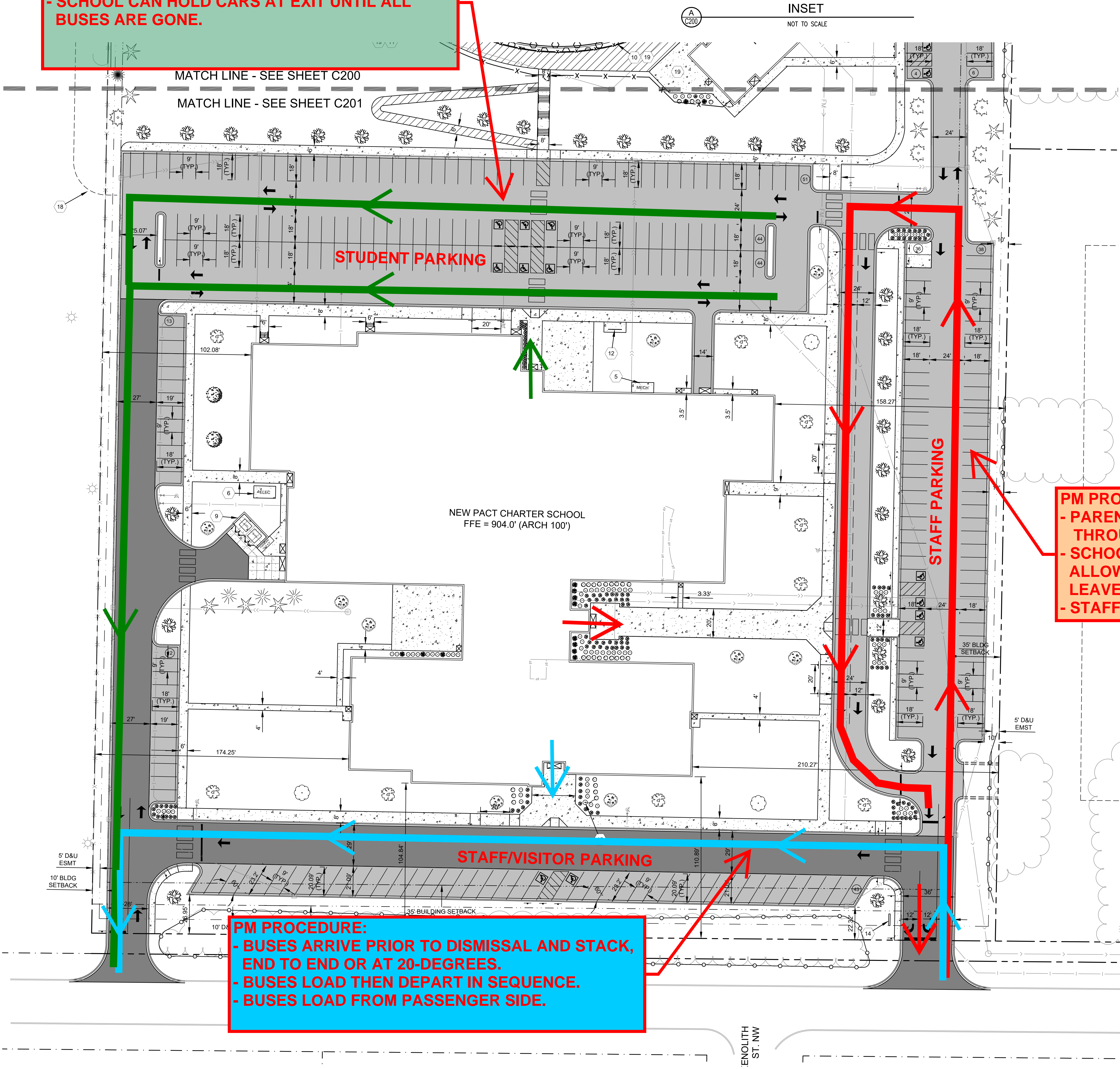
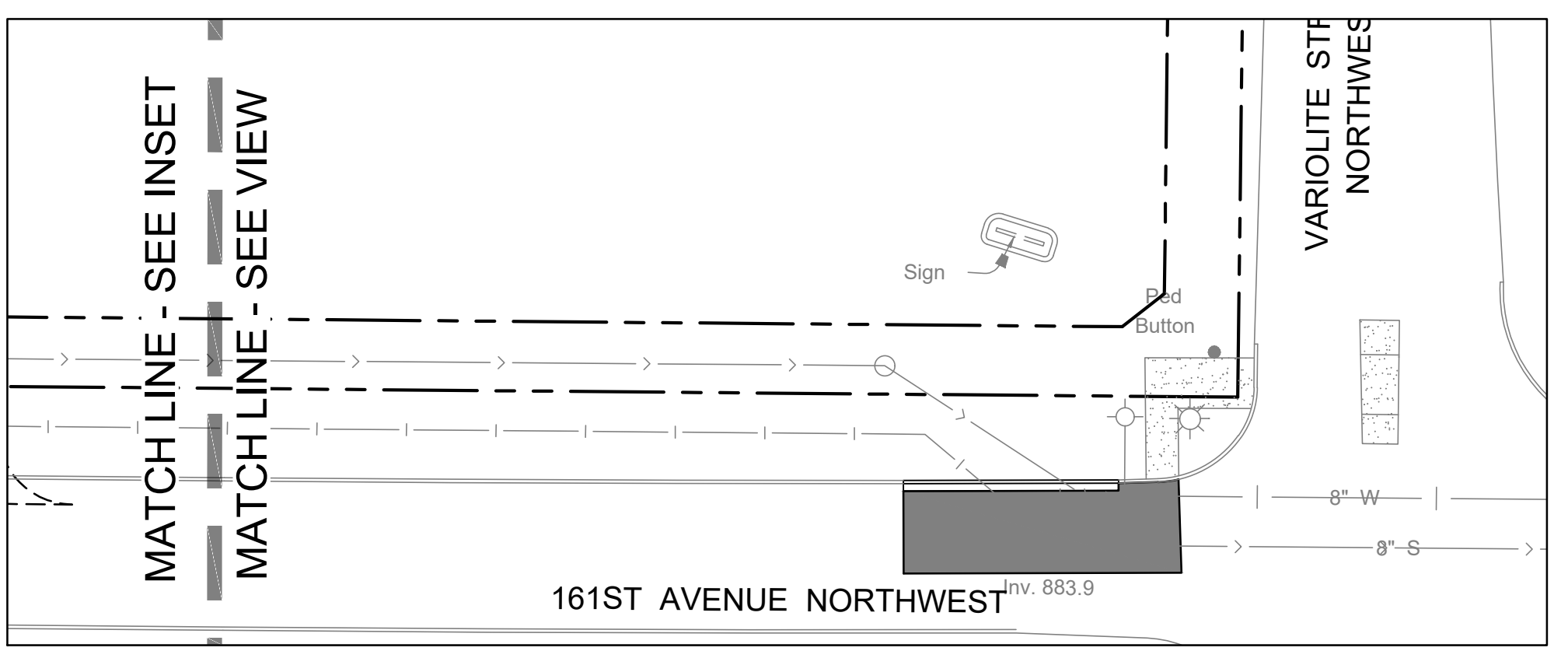
PM PROCEDURE:
 - SCHOOL TO DETERMINE WHEN STUDENTS CAN LEAVE BUILDING
 - SCHOOL CAN HOLD CARS AT EXIT UNTIL ALL BUSES ARE GONE.

PM PROCEDURE:
 - PARENTS QUEUE FROM END OF DROP OFF LANE THROUGH PARKING LOT.
 - SCHOOL TO DETERMINE WHEN PARENTS ARE ALLOWED TO ARRIVE AND WHEN STUDENTS CAN LEAVE BUILDING
 - STAFF DEPART AFTER PARENT PICK-UP.

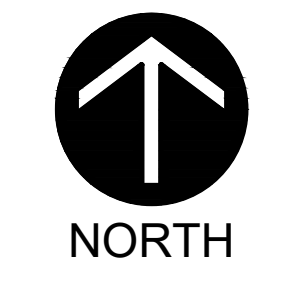
SCHOOL TRAFFIC CIRCULATION - PM

- STUDENT PICK UP
- BUSES
- STUDENT PARKING

PM PROCEDURE:
 - BUSES ARRIVE PRIOR TO DISMISSAL AND STACK, END TO END OR AT 20-DEGREES.
 - BUSES LOAD THEN DEPART IN SEQUENCE.
 - BUSES LOAD FROM PASSENGER SIDE.



LAND USE APPLICATION SET - NOT FOR CONSTRUCTION



MATCH LINE - SEE INSET
 MATCH LINE - SEE VIEW

