

Document No.: 2364192.001 ABSTRACT

05/04/2022 01:40 PM

Fees/Taxes In the Amount of: \$56.00

Pamela J. LeBlanc
Anoka Cty Property Records and Taxation
Property Tax Administrator and
Recorder/Registrar of Titles
Deputy: nbjohnso



Document No.: 600932.001 TORRENS

05/04/2022 01:40 PM

Fees/Taxes In the Amount of: \$56.00

Pamela J. LeBlanc
Anoka Cty Property Records and Taxation
Property Tax Administrator and
Recorder/Registrar of Titles
Deputy: nbjohnso



PLAT

HIGHWAY R/W PLAT

THIS PAGE IS NOT PART OF THE ORIGINAL DOCUMENT PRESENTED FOR RECORDING
 ADDED BY ANOKA COUNTY RECORDER FOR POSTING ONLY.

MUNICIPALITY: RAMSEY

CHECKED BY: LRB/DS ON 5/4/2022

MAP # 4719

DOC. DATE: 5/4/2022

NO. OF PAGES 4

SHORT NAME: _____ HWY R/W PLAT NO 103

LONG NAME: _____ HIGHWAY RIGHT-OF-WAY PLAT NO 103

A/T	PARENT PINS	CERT #	A/T	PARENT PINS	CERT #
A	34-32-25-14-0026		T	34-32-25-41-0006	135950
A	34-32-25-14-0027		T	34-32-25-14-0029	146317
A/T	35-32-25-23-0016	137179	T	34-32-25-14-0022	125508
A	35-32-25-32-0015		A/T	34-32-25-14-0025	125508
A	35-32-25-32-0014		T	34-32-25-14-0014	146316
A	35-32-25-32-0013		A	35-32-25-32-0058	
A	35-32-25-32-0019		A	35-32-25-31-0017	
A	35-32-25-32-0047		A	34-32-25-14-0019	
A	35-32-25-32-0050		A	34-32-25-11-0030	
T	35-32-25-32-0037	136515	A	34-32-25-11-0031	
A	35-32-25-32-0004		T	35-32-25-22-0019	120992
A	35-32-25-32-0003		T	35-32-25-23-0013	121377
A	35-32-25-23-0002		A	34-32-25-11-0032	
A	35-32-25-23-0003		T	35-32-25-23-0006	112261
A	35-32-25-32-0001		T	35-32-25-31-0007	104500
A	35-32-25-32-0039		T	35-32-25-31-0024	106264
A	35-32-25-32-0041		A	35-32-25-31-0025	
A	35-32-25-32-0040		A	35-32-25-31-0026	
T	34-32-25-41-0007	116167	T	35-32-25-31-0027	108612

DIV # _____

ANOKA COUNTY HIGHWAY RIGHT-OF-WAY PLAT NO. 103

County Highway Project No. SP. 002-657-003

PROVISIONAL STATEMENTS

- The plat and equipment used in the creation of this plat, and the data used in connection therewith were examined with reasonable care and found to be correct.
- The plat was prepared from the original records of the County Highway Department and from the actual survey.
- The plat was prepared from the original records of the County Highway Department and from the actual survey.
- For the purpose of the plat, the plat was prepared from the original records of the County Highway Department and from the actual survey.
- The plat was prepared from the original records of the County Highway Department and from the actual survey.

County Engineer
 I hereby certify that this plat is a true and correct representation of the facts as shown, and that the plat was made under my direct supervision, and all conditions are correctly shown thereon and that the same have been approved by me.
 Date: May 4 2022

County Engineer
 I hereby certify that this plat is a true and correct representation of the facts as shown, and that the plat was made under my direct supervision, and all conditions are correctly shown thereon and that the same have been approved by me.
 Date: May 4 2022

County Register of Titles
 I hereby certify that this plat is a true and correct representation of the facts as shown, and that the plat was made under my direct supervision, and all conditions are correctly shown thereon and that the same have been approved by me.
 Date: May 4 2022

County Register of Titles
 I hereby certify that this plat is a true and correct representation of the facts as shown, and that the plat was made under my direct supervision, and all conditions are correctly shown thereon and that the same have been approved by me.
 Date: May 4 2022

Sheet 2 Parcels

DATA CONTAINED WITHIN THIS BOX FOR INSTRUCTIVE AND INFORMAL PURPOSES ONLY												
RIGHT-OF-WAY IN SECTION 34 & 35, TOWNSHIP 32, RANGE 25												
PARCEL	OWNER	LOCATION BY PARCEL IDENT NUMBER	DEED RECORD NUMBER	TORRENS CERTIFICATE NUMBER	ENTIRE TRACT AREA (ACRES)	EXISTING RIGHT OF WAY AREA (ACRES)	NEW RIGHT OF WAY AREA (ACRES)	PERMANENT EASEMENT AREA (ACRES)	TEMPORARY EASEMENT AREA (ACRES)	TEMPORARY EASEMENT AREA (ACRES)	BALANCE OF TRACT (ACRES)	REMARKS
5076	WOODMEN OF WORLD LIFE INSURANCE	343225140028	5011841.004		1.151	0.000	0.000	0.000	0.000	0.000	1.151	
51	CITY OF RANSEY	343225140027	3172549.003		1.617	0.000	0.000	0.000	0.000	0.000	1.617	
52, 56	NOT USED											
59	HOWMAN LAND INVESTMENTS	353225230098		127379	11.745	0.000	0.000	0.000	0.000	0.000	11.745	
61, 63-64, 65, 73, 75, 77, 79	NOT USED											
84	ICA PROPERTIES LLC	353225300085	3118758.001		0.874	0.000	0.000	0.000	0.000	0.000	0.874	
85	QFS LLC	353225300094	3119395.001		0.432	0.000	0.000	0.000	0.000	0.000	0.432	
89	RELIABLE HOLDINGS LLC	353225300018	1978048.017		0.432	0.000	0.000	0.000	0.000	0.000	0.432	
87	CAMINO INVESTMENTS LLC	353225300099	2307078.001		0.000	0.000	0.000	0.000	0.000	0.000	0.000	
88	VELARKE HOLDINGS LLC	353225300047	2364957.005		0.000	0.000	0.000	0.000	0.000	0.000	0.000	
89PE, 90PE-1 & 90TE-2	LEOP PROPERTIES LLC	353225300000	2346167.000		0.817	0.000	0.000	0.000	0.000	0.000	0.817	
90PE, 90TE-1 & 90TE-2	ZAP PROPERTIES LLC	353225300037	154610		0.820	0.000	0.000	0.000	0.000	0.000	0.820	
91PE, 91TE-1 & 91TE-2	H R BELLY HOMES LLC	353225300004	2108747.009		0.820	0.000	0.000	0.000	0.000	0.000	0.820	
92	JERRY A & ANGELA M EFFER	353225300003	848376		0.820	0.000	0.000	0.000	0.000	0.000	0.820	
93	TORREY C JOHNSON	353225300002	2023288.008		0.820	0.000	0.000	0.000	0.000	0.000	0.820	
94	TORREY C JOHNSON	353225300005	2023288.008		0.820	0.000	0.000	0.000	0.000	0.000	0.820	
95	TORREY C JOHNSON	353225300001	2023288.008		0.820	0.000	0.000	0.000	0.000	0.000	0.820	
96	RELIABLE HOLDINGS LLC	353225300038	2292346.007		0.820	0.000	0.000	0.000	0.000	0.000	0.820	
97, 99	NOT USED											
98E	JOHN A & SHARON L FRIEDBURG	353225300041	849797.0		0.700	0.000	0.000	0.000	0.000	0.000	0.700	
100E	ALLEN A LINDA FARMES TRUSTEES	353225300040	2338872.009		0.820	0.000	0.000	0.000	0.000	0.000	0.820	
101E	PETRA A & LISA A WARD TRUST	343225410007		188167	0.820	0.000	0.000	0.000	0.000	0.000	0.820	
102E	MICHAEL J & JENNIFER L MCGRATH	343225410008		188167	0.820	0.000	0.000	0.000	0.000	0.000	0.820	
103-105	NOT USED											
108E	LAWRENCE HAMILTON TRUST	343225140029		140397	0.820	0.000	0.000	0.000	0.000	0.000	0.820	
110E, 110TE-1 & 110TE-2	DB PROPERTIES	343225140022		128504	0.820	0.000	0.000	0.000	0.000	0.000	0.820	
118E, 118TE-1 & 118TE-2	DB PROPERTIES	343225140025		128504	0.820	0.000	0.000	0.000	0.000	0.000	0.820	
119E	CONNECTIONS CHURCH	343225140014		140396	0.820	0.000	0.000	0.000	0.000	0.000	0.820	
113-134, 136, 138, 140-124	NOT USED											
143	RELIABLE HOLDINGS LLC	353225300036	2264807.005		0.820	0.000	0.000	0.000	0.000	0.000	0.820	
144-153	NOT USED											



NOTE

All acreage shown on this plat may not be furnished by Anoka County, Great northern documents for each parcel.

\$ 56.00 / \$ 56.00

ANOKA COUNTY HIGHWAY RIGHT-OF-WAY PLAT NO. 103

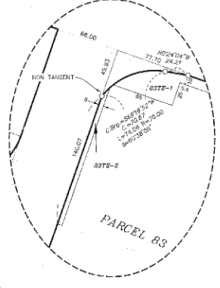
County Highway Project No. S.P. 002-657-003

CONVENTIONAL SYMBOLS

Section Line	---
Quarter Section Line	---
Property Line	---
Plot Boundary Line	---
Existing A/R Line	---
R/W Perch Marker	○
Temporary Easement	---
Permanent Easement	---
Right-of-Way Monument	○
Adjoint Land Monument	○
Found Iron Monument	●
Found Cast Iron Monument	○
Found Right of Way Monument	●

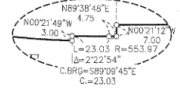


DETAIL B (NO SCALE)



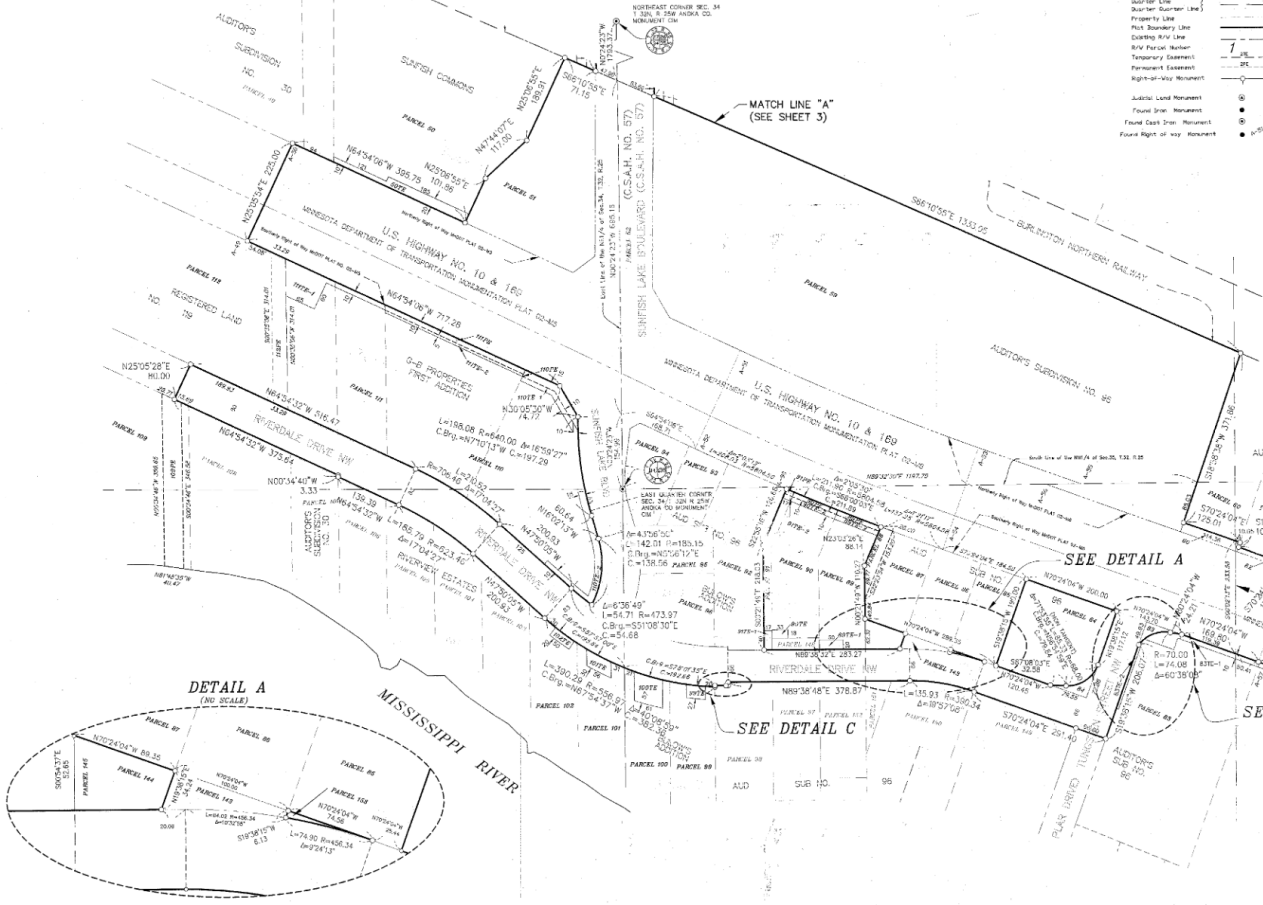
MATCH LINE "B" (SEE SHEET 4)

DETAIL C (NO SCALE)

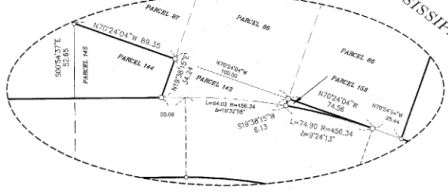


NOTE

All parcels shown on this plat may not be surveyed. To check correct check pertinent documents for each parcel.



DETAIL A (NO SCALE)



SEE DETAIL A

SEE DETAIL C

SEE DETAIL B

