



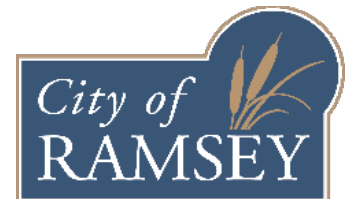
Real People. Real Solutions.

The Ramsey Gateway Project Highway 10 – Ramsey Blvd/Sunfish Lake Blvd Council Work Session

September 27th, 2022



Anoka County
MINNESOTA

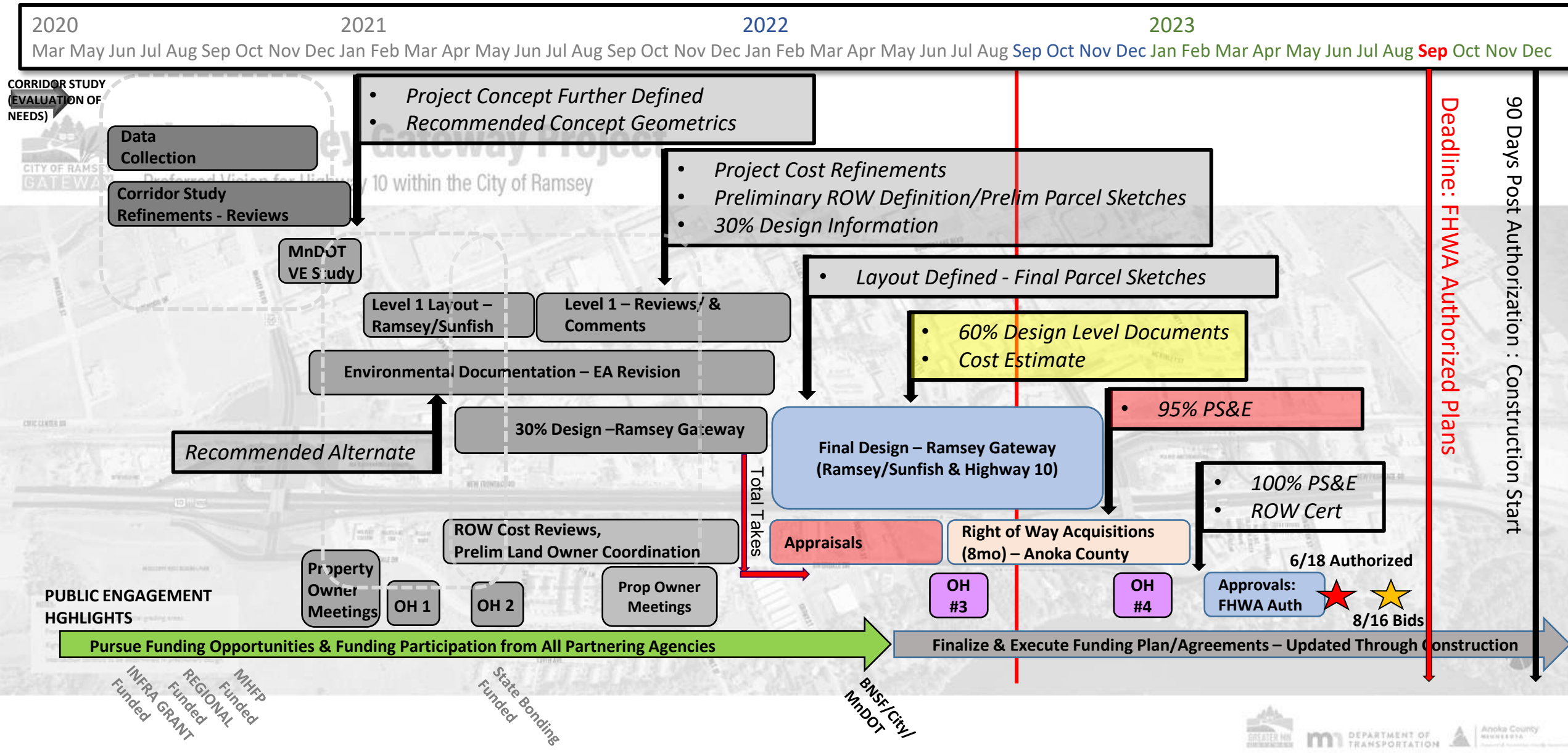


CONTENTS |

- ❑ Overview of schedule & process
- ❑ Recap City style goals from prior discussions
- ❑ Recap public input on aesthetic features
- ❑ Review recommended visual quality features
 - Development Process
 - Additional Opportunities
- ❑ Seek consensus on visual quality features
 - Bridge features: retaining walls | features from TH10 & local roads | noise walls
 - Corridor landscaping: trees | benches | lighting



SCHEDULE | Major Milestones



PROJECT LAYOUT | Plan Rendering





Existing Aesthetics Review

HWY 10 BRIDGE & WALL AESTHETICS – EXISTING



ARMSTRONG BRIDGE | Aesthetic Elements (from TH10)



- Single color stain: MSE panels/Abutment/Bridge beams
- Vertical brick columns
 - Bridge abutment/Approach panel
 - MSE panel interest



ARMSTRONG BRIDGE | Aesthetic Elements (from Armstrong)



- Single color stain: Concrete barrier rail
- Vertical brick columns: Abutment break/Approach panel break
- Decorative railing: Bridge span/Railroad span
- Decorative sidewalk paving: Colored concrete bands/decorative jointing



CONTENTS | Aesthetic Preferences (public input summary)

BRIDGE

Cutout railing accent.



Most in favor of

Under edge bridge lighting.



Most in favor of



Lights at the roundabouts will match armstrong lights



Lights to be installed at the other intersections

Most in favor of

Roundabout Aesthetics

Simple, low maintenance, minimal aesthetic appeal, lowest cost.



CORRIDOR

Amenity Considerations

Most in favor of

Wood slat, metal frame benches.



DECISIONS NEEDED | Aesthetics

1. Bridge recommendations follow an enhanced Armstrong motif
 - Followed aesthetic direction defined previously with Armstrong*
 - Incorporated feedback from the City and Community*
 - Coordinated with Anoka County and MnDOT*
2. Design recommendations for corridor enhancements
 - Lighting
 - Roundabouts
 - Benches
 - Trees
 - Noise walls



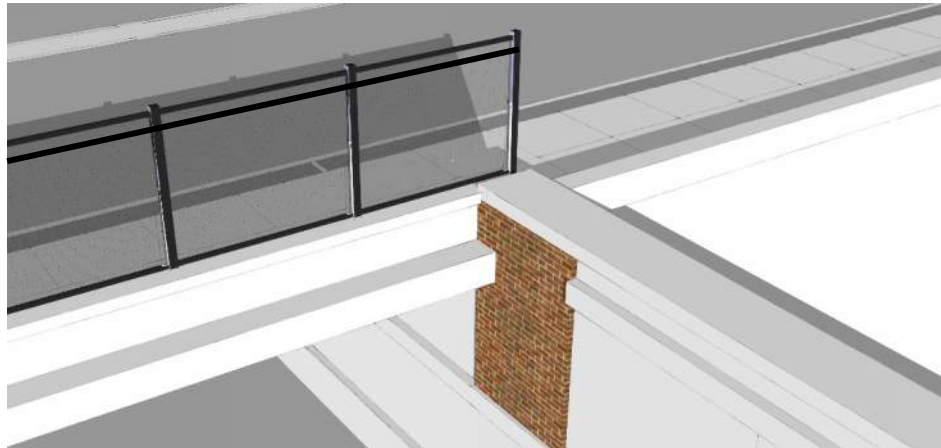
PROPOSED BRIDGES | Ramsey Boulevard



PROPOSED BRIDGES | Sunfish Lake Boulevard



PROPOSED SUNFISH BRIDGE | Aesthetics (car experience)

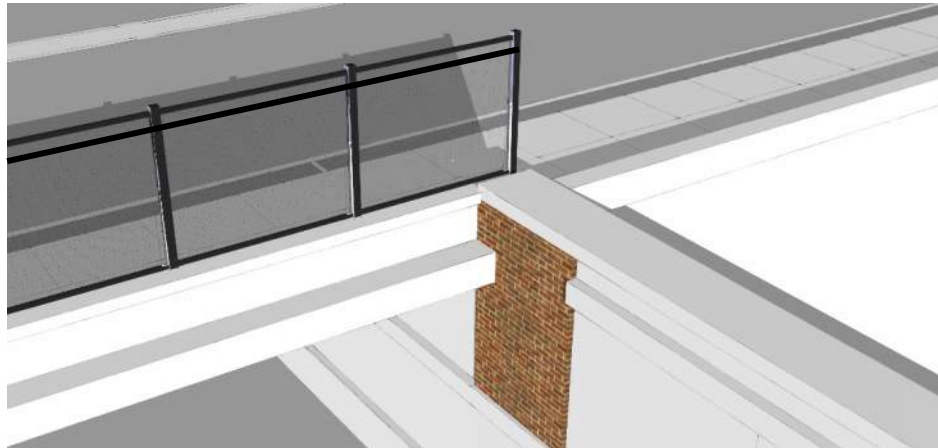
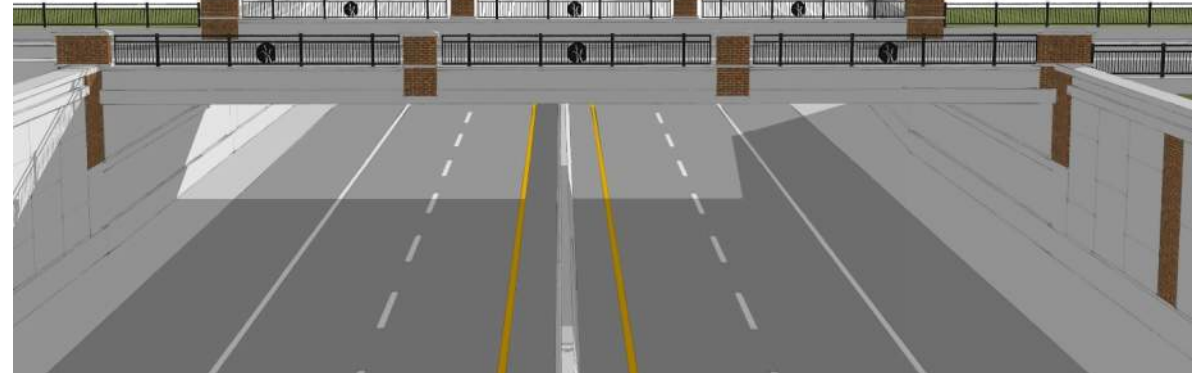


RAILROAD BRIDGE AESTHETIC

- Car Experience:
 - Materials + Shapes
 - Branding & Identity



PROPOSED RAMSEY BRIDGE | Aesthetics (car experience)



RAILROAD BRIDGE AESTHETIC



CUSTOM FENCE MEDALLION

- Car Experience:
 - Materials + Shapes
 - Branding & Identity
 - Decorative Panels in Railing



PROPOSED RAMSEY BRIDGE | Aesthetics (Pedestrian Experience)



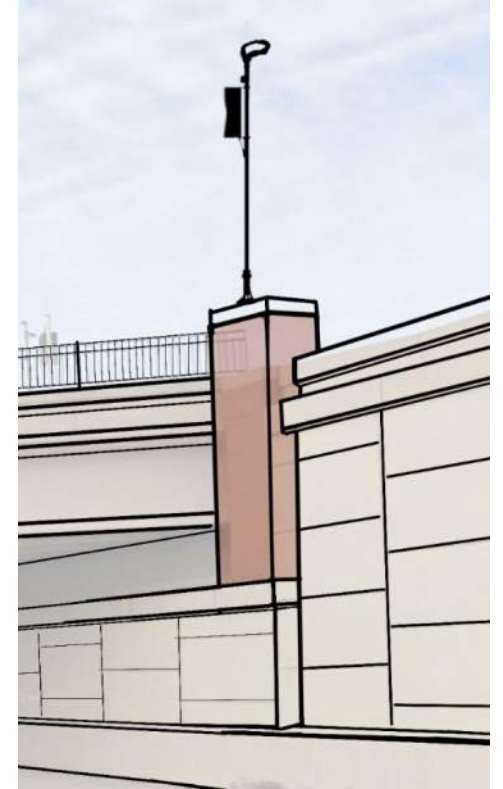
- Pedestrian Experience:
 - Texture & Color
 - Sidewalk Treatments
- Branding / Identity
- Lighting Accents



Custom Medallion on
Ramsey Blvd. Bridge



BRIDGE LIGHTING | Overview & Opportunities (pedestrian)

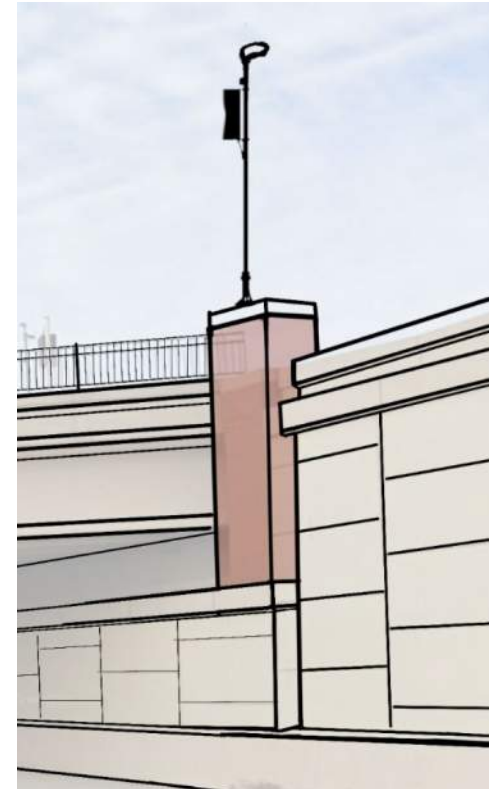
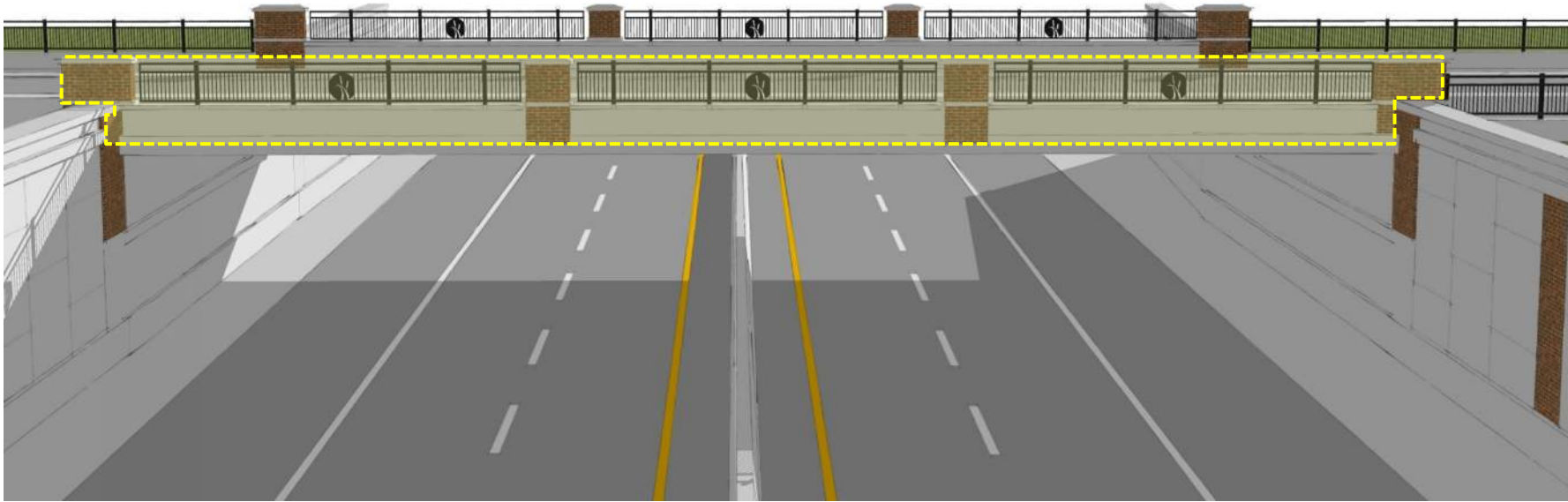


- Pedestrian Experience:
 - Crash barrier limits linear lighting
 - May be opportunity for low profile wall sconces (and junction boxes)
 - Maintenance of fixtures is a consideration

Previous option that was not well received



BRIDGE LIGHTING | Overview & Opportunities (accent)



- Motorist Experience:
 - Reviewing options to highlight aesthetic elements on bridges compliant with MnDOT Bridge Office
 - Any lighting must be reviewed against glare to motorists along TH10

Previous option that was not well received





Aesthetic Considerations

CORRIDOR OPPORTUNITIES – RAMSEY/SUNFISH

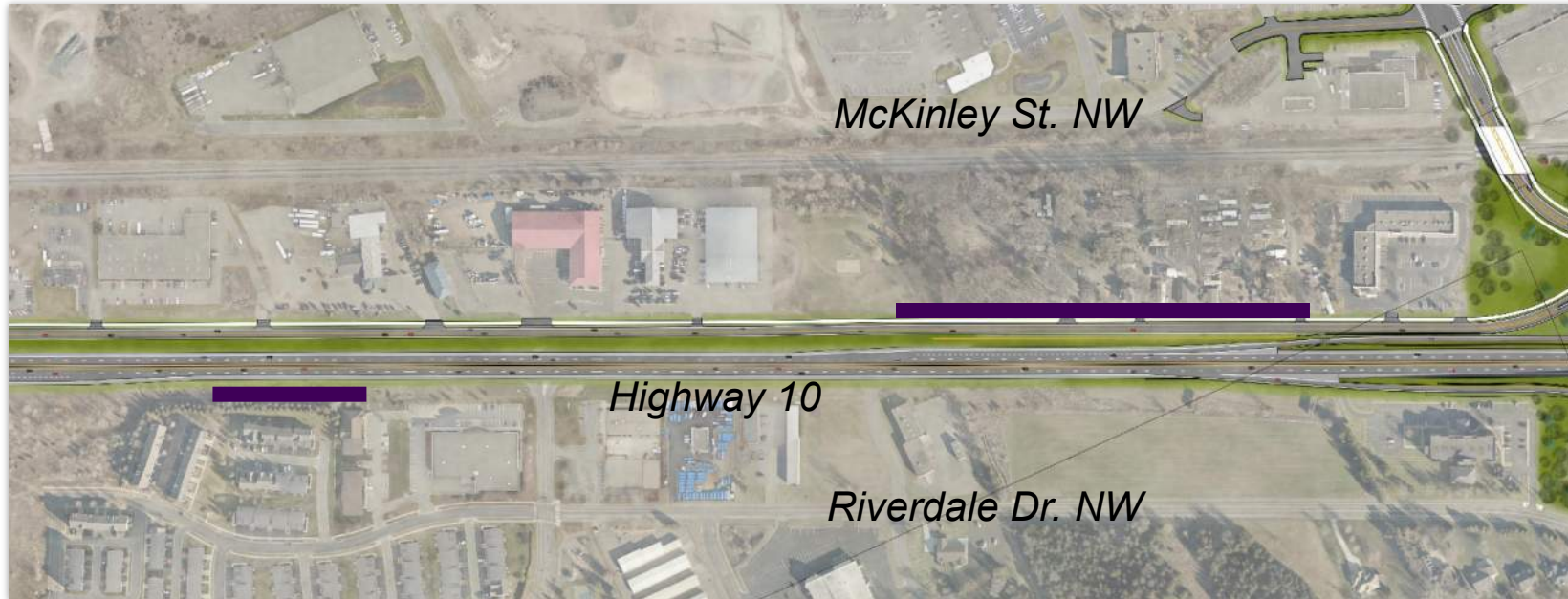


DECISION NEEDS | Corridor Aesthetic Elements

1. Design recommendations for corridor enhancements
 - Lighting
 - Benches
 - Trees
 - Roundabout
 - Noise walls



CORRIDOR OPPORTUNITIES | Aesthetics (lighting/noise walls)



Lights at the roundabouts will match armstrong lights



Lights to be installed at the other intersections

- MnDOT does allow limited aesthetic upgrades
- Working to closely match the aesthetic at Armstrong



- Roundabout lights to match Armstrong lighting
- Intersection lights to match city standard



CORRIDOR OPPORTUNITIES | Aesthetics (benches/trees)



- Benches along corridor to provide rest areas
- Benches at 'trailhead' on south side of project
- Trees and tall grasses concentrated at bench nodes



CORRIDOR OPPORTUNITIES | Aesthetics (roundabouts)



- Simple – Low Maintenance
- Screen oncoming traffic from across roundabout
- Seasonal interest

VIBURNUM



DOGWOOD



LOW-MOW TURF





AESTHETIC COST CONSIDERATIONS



PROPOSED FEATURES | Aesthetics Cost Participation (Overview)

- Cost participation for aesthetic elements are based on level of impact determined in part from a Visual Impact Assessment (VIA) and Visual Quality Manual (VQM), then confirmed by MnDOT Bridge Office.
- The chart below indicates three levels. (This project is anticipated at Level B).

Table 1: Maximum MnDOT Aesthetic Participation Factors and Limits as a Percentage of Estimated MnDOT Project Construction Costs

	Level of Impact		
	Level A	Level B	Level C
Specific Item Categories:			
*Bridges	15% not to exceed \$3,000,000 per bridge	7% not to exceed \$300,000 per bridge	5% not to exceed \$200,000 per bridge
Retaining Walls	10%	5%	1% or standard treatments
Noise Walls	7%	4%	1%



PROPOSED FEATURES | Aesthetics Cost Participation (Overview)

- The following is an example illustrating how cost participation is applied at a Level B participation:
 - If the bridge has a rough cost of **\$2,000,000**.
7% = **\$140,000**
 - If the retaining walls have a rough cost of \$800,000
5% = **\$40,000**
 - Additionally, 4% of noise walls = **\$80,000**

In this example aesthetic cost participation allowance would be \$260,000
- Maintenance responsibilities for aesthetics features will require discussions with Anoka County and MnDOT for a maintenance agreement.



PROPOSED FEATURES | Aesthetics Cost Participation (Overview)

- **This project will likely use project dollars instead of local match**
 - Non-participating items (trees, benches, lighting) would be paid from a different source; and would require a discussion between the County and City
 - Participating items would be covered by project dollars to a limit similar to Level B cost participation.
 - **Costs above that limit would be the responsibility of the local agency**
- The aesthetic elements currently shown are between a Level B and C range according to MnDOT's cost participation scale



NEXT STEPS |

<u>Action</u>	<u>Schedule 22'</u>
✓ Council Feedback	Apr
✓ Public comment on corridor options and concepts	Jun/Jul
❑ Selections and Final Direction [Council]	Sept
❑ Final plans & cost estimates	Oct/Nov





The Ramsey Gateway Project – Aesthetic Considerations

QUESTIONS?

