

NOTE:
 TREES, SHRUBS, AND
 PERENNIALS TO BE
 INSTALLED BY OTHERS

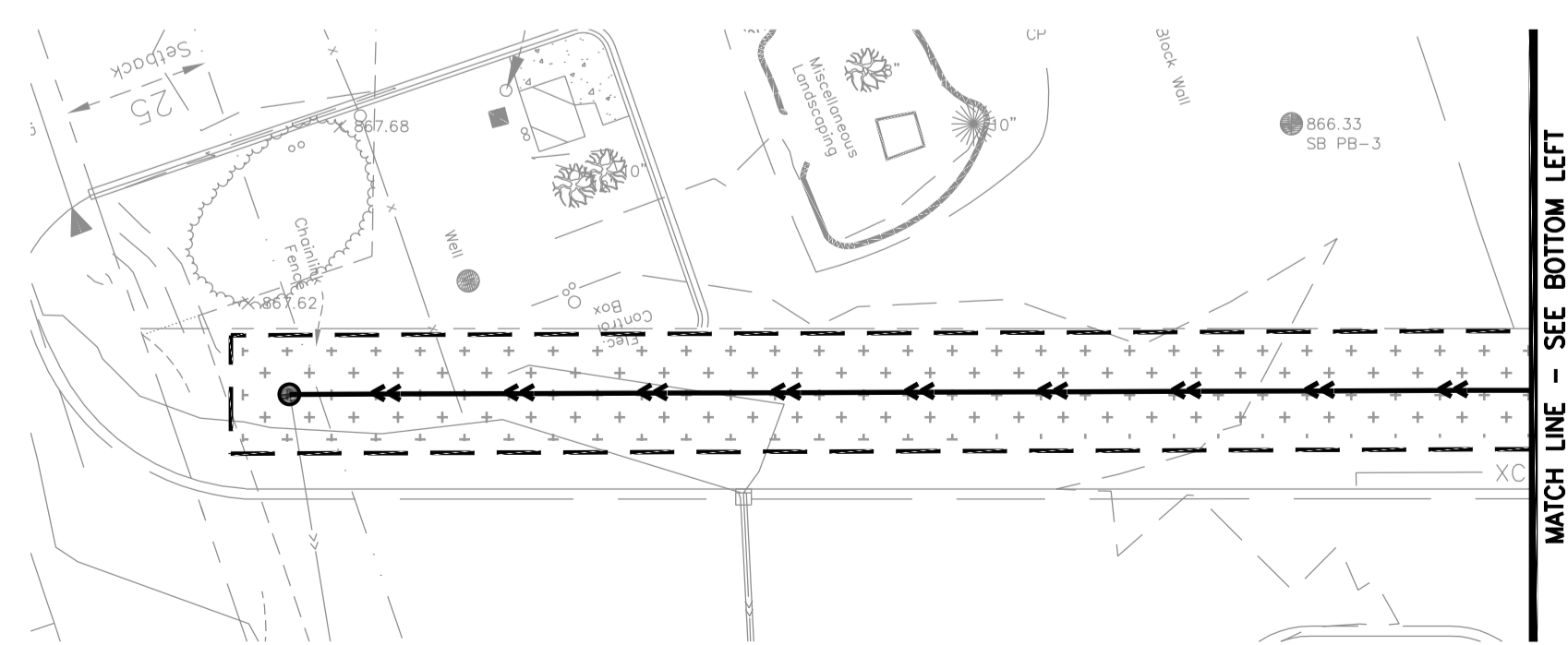
LANDSCAPE LEGEND	
	DECIDUOUS TREE
	CONIFEROUS TREE
	SHRUBS/PERENNIALS
	LIMESTONE BOULDERS
	SOD
	LOW MAINTENANCE TURF (MNDOT SEED MIX 25-131)
	SEED MIX 35-241 MESIC PRAIRIE GENERAL
	STORMWATER SOUTH AND WEST (MNDOT SEED MIX 33-261)
	3/4" TAP ROCK MULCH
	EXISTING TREE/SHRUBS TO REMAIN
	LIMITS OF DISTURBANCE
	LANDSCAPE EDGER

LANDSCAPE NOTES

- CONTRACTOR SHALL CONTACT GOPHER STATE ONE CALL TO VERIFY LOCATIONS OF ALL UNDERGROUND UTILITIES PRIOR TO INSTALLATION OF ANY PLANTS OR LANDSCAPE MATERIAL
- ACTUAL LOCATION OF PLANT MATERIAL IS SUBJECT TO FIELD AND SOIL CONDITIONS.
- NO PLANTING WILL BE INSTALLED UNTIL ALL GRADING AND CONSTRUCTION HAS BEEN COMPLETED IN THE IMMEDIATE AREA.
- COORDINATE ALL LANDSCAPE WORK WITH APPROPRIATE TEMPORARY AND PERMANENT EROSION CONTROL.
- ALL SUBSTITUTIONS MUST BE APPROVED BY THE LANDSCAPE ARCHITECT PRIOR TO SUBMISSION OF ANY BID AND/OR QUOTE BY THE LANDSCAPE CONTRACTOR.
- CONTRACTOR SHALL PROVIDE TWO YEAR GUARANTEE OF ALL PLANT MATERIALS. THE GUARANTEE BEGINS ON THE DATE OF THE LANDSCAPE ARCHITECT'S OR OWNER'S WRITTEN ACCEPTANCE OF THE INITIAL PLANTING. REPLACEMENT PLANT MATERIAL SHALL HAVE A ONE YEAR GUARANTEE COMMENCING UPON PLANTING.
- ALL PLANTS TO BE SPECIMEN GRADE, MINNESOTA-GROWN AND/OR HARDY. SPECIMEN GRADE SHALL ADHERE TO BUT IS NOT LIMITED BY, THE FOLLOWING STANDARDS:
 - ALL PLANTS SHALL BE FREE FROM DISEASE, PESTS, WOUNDS, SCARS, ETC.
 - ALL PLANTS SHALL BE FREE FROM NOTICEABLE GAPS, HOLES, OR DEFORMITIES.
 - ALL PLANTS SHALL BE FREE FROM BROKEN OR DEAD BRANCHES. ALL PLANTS SHALL HAVE HEAVY, HEALTHY BRANCHING AND LEAFING.
 - CONIFEROUS TREES SHALL HAVE AN ESTABLISHED MAIN LEADER AND A HEIGHT TO WIDTH RATIO OF NO LESS THAN 5:3.
- PLANTS TO MEET AMERICAN STANDARD FOR NURSERY STOCK REQUIREMENTS FOR SIZE AND TYPE SPECIFIED.
- PLANTS TO BE INSTALLED AS PER MNLA & ANSI STANDARD PLANTING PRACTICES.
- PLANTS SHALL BE IMMEDIATELY PLANTED UPON ARRIVAL AT SITE. PROPERLY HEEL-IN MATERIALS IF NECESSARY; TEMPORARY ONLY.
- THE NEED FOR SOIL AMENDMENTS SHALL BE DETERMINED UPON SITE SOIL CONDITIONS PRIOR TO PLANTING. LANDSCAPE CONTRACTOR SHALL NOTIFY LANDSCAPE ARCHITECT FOR THE NEED OF ANY SOIL AMENDMENTS.
- TOPSOIL (AND PLANTING SOIL) TO ADHERE TO MN/DOT STANDARD SPECIFICATION 3877 (SELECT TOPSOIL BORROW), AND TO BE FREE OF ROOTS, ROCKS (LARGER THAN ONE INCH), SUBSOIL DEBRIS, AND LARGE WEEDS, UNLESS SPECIFIED OTHERWISE. UTILIZE EXISTING ON-SITE TOPSOILS AS APPROPRIATE. MINIMUM 4" DEPTH TOPSOIL FOR ALL LAWN GRASS AREAS AND 12" DEPTH TOPSOIL (PLANTING SOIL) FOR TREE, SHRUBS, AND PERENNIALS.
- MULCH TO BE AT ALL TREE, SHRUB, PERENNIAL, LANDSCAPE BED, AND MAINTENANCE AREAS, OR AS INDICATED ON THE PLAN. SHREDDED HARDWOOD MULCH TO BE A MINIMUM 4-INCH DEPTH, AND FREE OF DELETERIOUS MATERIAL. ROCK MULCH TO BE A MINIMUM 3-INCH DEPTH, TRAP ROCK (OR AS DIRECTED). ROCK MULCH TO BE ON COMMERCIAL GRADE FILTER FABRIC, BY TYPAR, OR APPROVED EQUAL WITH NO EXPOSURE. MULCH AND FABRIC TO BE APPROVED BY OWNER PRIOR TO INSTALLATION.
- ALL DISTURBED AREAS TO BE SODDED OR SEEDED, UNLESS OTHERWISE NOTED. SOD TO BE STANDARD MINNESOTA GROWN AND/OR HARDY BLUEGRASS MIX, FREE OF LAWN WEEDS. SEED MIX AND APPLICATION RATE AS SPECIFIED PER MN/DOT SPECIFICATIONS, OR AS OTHERWISE NOTED. ALL TOPSOIL AREAS TO BE RAKED TO REMOVE DEBRIS AND ENSURE POSITIVE DRAINAGE. SLOPES OF 3:1 OR GREATER SHALL BE STAKED. IF NOT INDICATED ON LANDSCAPE PLAN, SEE EROSION CONTROL PLAN. REPAIR, REPLACE, OR RESEED ANY DAMAGED OR UNESTABLISHED AREAS UNTIL PROJECT ACCEPTANCE AND COMPLETION OF WARRANTY.
- PROVIDE IRRIGATION TO ALL TURF GRASS AND PLANTING BED AREAS ON SITE, OR AS INDICATED. IRRIGATION SYSTEM TO BE DESIGN/BUILD BY LANDSCAPE CONTRACTOR. LANDSCAPE CONTRACTOR TO PROVIDE IRRIGATION SYSTEM DESIGN PLANS, CALCULATIONS, AND SHOP DRAWINGS FOR LANDSCAPE ARCHITECT APPROVAL PRIOR TO INSTALLATION. CONTRACTOR TO PROVIDE OPERATION MANUALS, AS-BUILT PLANS, AND NORMAL PROGRAMMING. SYSTEM SHALL BE WINTERIZED AND HAVE SPRING STARTUP DURING FIRST YEAR OF OPERATION. SYSTEM SHALL HAVE ONE-YEAR WARRANTY ON ALL PARTS AND LABOR. COORDINATE ALL IRRIGATION PIPES, WIRING, SLEEVING, AND OTHER COMPONENTS WITH OTHER PROJECT IMPROVEMENTS.
- CONTRACTOR SHALL PROVIDE NECESSARY WATERING OF PLANT MATERIALS UNTIL THE PLANT IS FULLY ESTABLISHED. OWNER WILL NOT PROVIDE WATER FOR CONTRACTOR.
- REPAIR ALL DAMAGE FROM PLANTING OPERATIONS AT NO COST TO OWNER.
- SEE PLANT SCHEDULE ON SHEET L101

LANDSCAPE SUMMARY

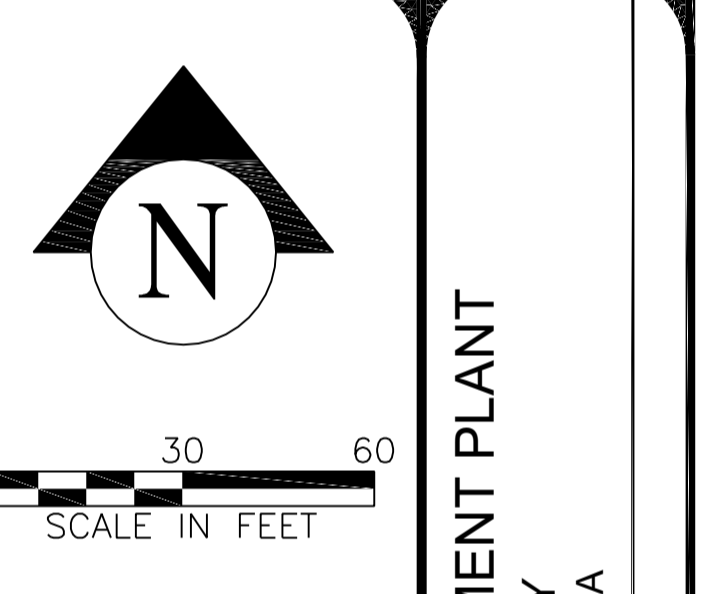
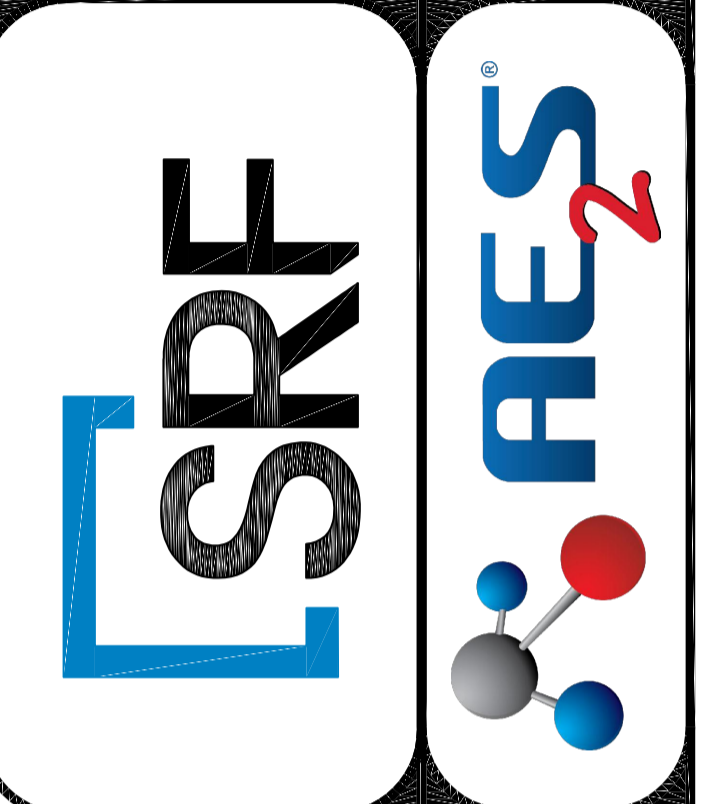
- CODE REQUIREMENTS**
- 89,910 SF OF CANOPY COVER AS OUTLINED IN 1 SECTION 117.364
 - 1 TREE PER EVERY TEN PARKING SPACES
 - 1 OVERSTORY TREE FOR EVERY 35 FEET OF PUBLIC ROAD FRONTAGE.
- DECIDUOUS/CONIFEROUS TREES REQUIRED - BUILDING SQUARE FEET**
- IMPERVIOUS SF = 77,225 SF
 - PERVIOUS SF = 83,250 SF
 - RATIO: 1:1.08
 - MINIMUM CANOPY COVER = MULTIPLY IMPERVIOUS AREA/SITE AREA RATIO BY SF OF PERVIOUS AREA
 - 1.08*83,250 = 89,910 SF MIN. OF CANOPY COVER
 - PROPOSED CANOPY COVER = 89,911 - SEE PLANT PLANT SCHEDULE ON SHEET L101 FOR CALCULATION



HEREBY CERTIFY THAT THIS PLAN WAS PREPARED BY ME OR UNDER MY DIRECT SUPERVISION AND THAT I AM A DULY LICENSED LANDSCAPE ARCHITECT UNDER THE LAWS OF THE STATE OF MINNESOTA.

SIGNATURE: JONATHAN W. FILLMORE
 PRINT NAME: JONATHAN W. FILLMORE
 DATE: 6/20/2022 LIC. NO.: 58679

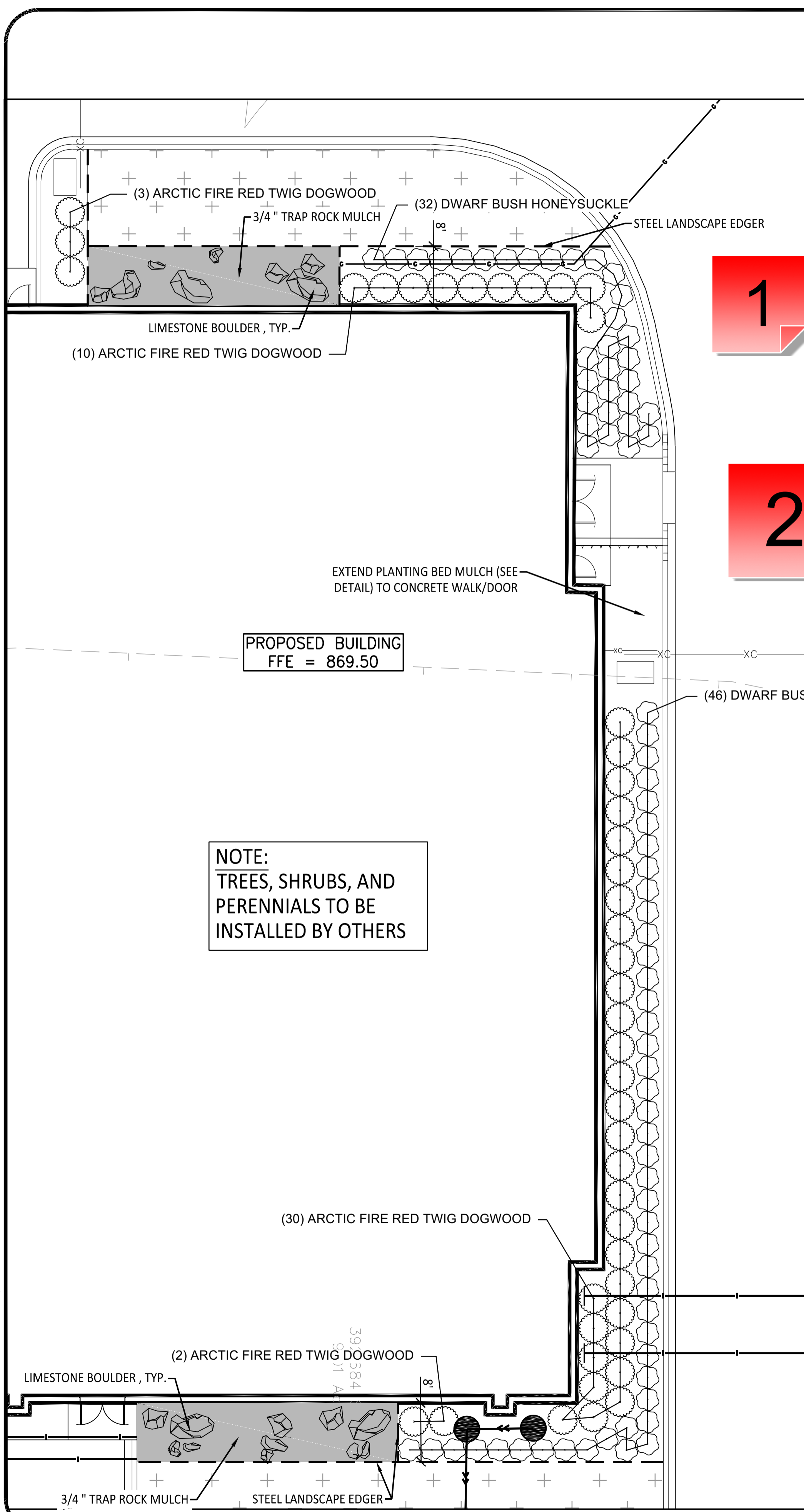
SYM	DATE	DESCRIPTION	APPR



RAMSEY WATER TREATMENT PLANT
 CITY OF RAMSEY
 RAMSEY, MINNESOTA
 LANDSCAPE PLAN

DRAWING TYPE
PRELIMINARY
 PREPARED BY
 BPR
 CHECKED / APPROVED
 MCA/MCA
 DATE
 JUNE 2022
 PROJECT NUMBER
 05434-2020-002

DRAWING
L100



PROPOSED BUILDING
 FFE = 869.50

NOTE:
 TREES, SHRUBS, AND
 PERENNIALS TO BE
 INSTALLED BY OTHERS

EXTEND PLANTING BED MULCH (SEE
 DETAIL) TO CONCRETE WALK/DOOR

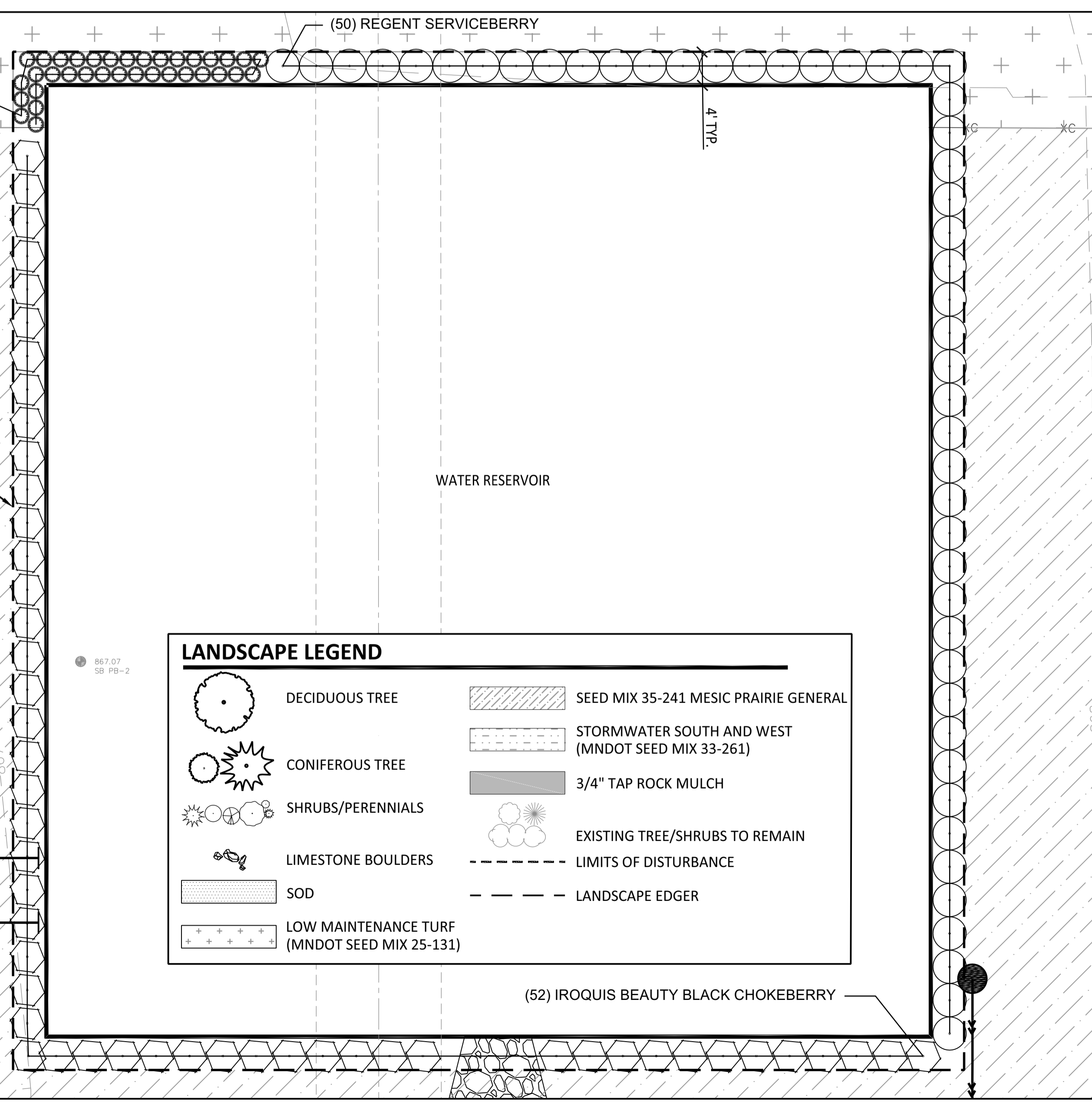
1

2

3

PLANT SCHEDULE

DECIDUOUS TREES							
Botanical	Common	Size	Container	Remarks	Quantity	Canopy Cover (SF)	Total Canopy Cover (SF)
CELTIS OCCIDENTALIS	COMMON HACKBERRY	2.5" CAL.	B&B	SINGLE, STRAIGHT LEADER	5	922	4,610
GLEDITSIA TRIACANTHOS INERMIS 'SKYCOLE' TM	SKYLINE HONEYLOCUST	2.5" CAL.	B&B	SINGLE, STRAIGHT LEADER	3	415	1,245
QUERCUS BICOLOR	SWAMP WHITE OAK	2.5" CAL.	CONT.	SINGLE, STRAIGHT LEADER	6	718	4,308
QUERCUS MACROCARPA	BUR OAK	2.5" CAL.	CONT.	SINGLE, STRAIGHT LEADER	7	3,910	27,370
SALIX NIGRA	BLACK WILLOW	2.5" CAL.	B&B	SINGLE, STRAIGHT LEADER	4	460	1,840
TILIA AMERICANA 'BOULEVARD'	BOULEVARD LINDEN	2.5" CAL.	B&B	SINGLE, STRAIGHT LEADER	3	354	1,062
ULMUS AMERICANA 'NEW HARMONY'	NEW HARMONY ELM	2.5" CAL.	B&B	SINGLE, STRAIGHT LEADER	7	3,910	27,370
SHRUBS							
Botanical	Common	Size	Container	Remarks	Quantity	Canopy Cover (SF)	Total Canopy Cover (SF)
AMELANCHIER ALNIFOLIA 'REGENT'	REGENT SERVICEBERRY	#5	CONT.	PLANT 4' O.C.	50	18	900
ARONIA MELANOCARPA 'MORTON' TM	IROQUIS BEAUTY BLACK CHOKEBERRY	#5	CONT.	PLANT 4' O.C.	52	10	520
CORNUS STOLONIFERA 'FARROW'	ARCTIC FIRE RED TWIG DOGWOOD	#5	CONT.	PLANT 4' O.C.	45	32	1,440
DIERVILLA LONICERA	DWARF BUSH HONEYSUCKLE	#5	CONT.	PLANT 3' O.C.	78	2	156
PERENNIALS AND GRASSES							
Botanical	Common	Size	Container	Remarks	Quantity	Canopy Cover (SF)	Total Canopy Cover (SF)
GERANIUM MACULATUM	WILD GERANIUM	#1	CONT.	PLANT 18" O.C.	45	0	0
SPOROBOLUS HETEROLEPIS	PRAIRIE DROPSEED	#1	CONT.	PLANT 24" O.C.	35	0	0
TOTAL CANOPY COVER (SF)						89,911	

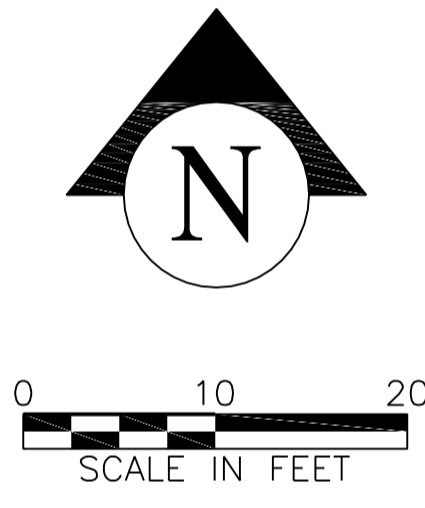
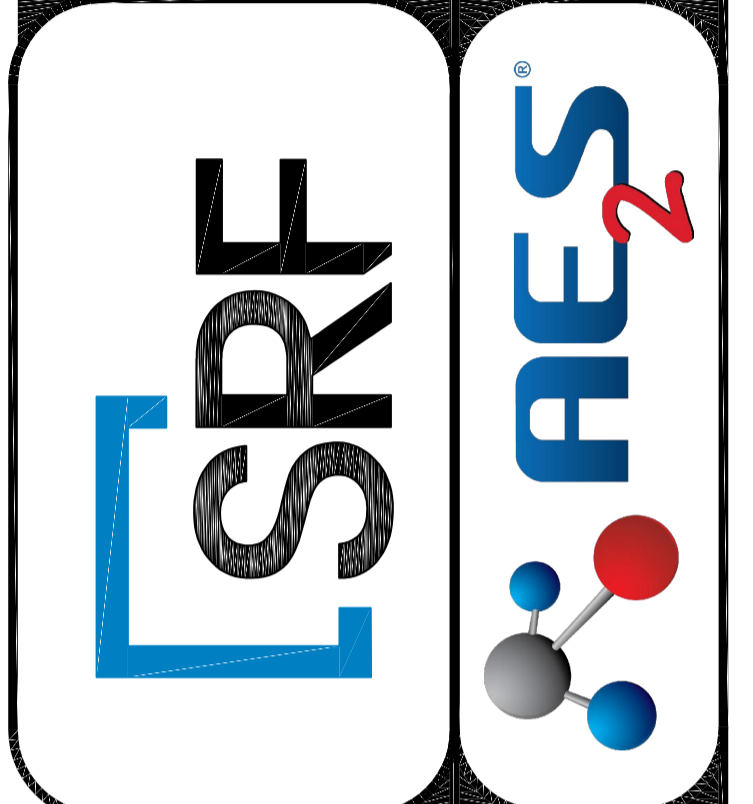


LANDSCAPE LEGEND

- DECIDUOUS TREE
- CONIFEROUS TREE
- SHRUBS/PERENNIALS
- LIMESTONE BOULDERS
- SOD
- LOW MAINTENANCE TURF (MNDOT SEED MIX 25-131)
- SEED MIX 35-241 MESIC PRAIRIE GENERAL
- STORMWATER SOUTH AND WEST (MNDOT SEED MIX 33-261)
- 3/4" TAP ROCK MULCH
- EXISTING TREE/SHRUBS TO REMAIN
- LIMITS OF DISTURBANCE
- LANDSCAPE EDGER

I HEREBY CERTIFY THAT THIS PLAN WAS
 PREPARED BY ME OR UNDER MY DIRECT
 SUPERVISION AND THAT I AM A DULY LICENSED
 LANDSCAPE ARCHITECT UNDER THE LAWS OF
 THE STATE OF MINNESOTA.

SIGNATURE: JONATHAN W. FILLMORE
 PRINT NAME: JONATHAN W. FILLMORE
 DATE: 6/20/2022 LIC. NO.: 58679



RAMSEY WATER TREATMENT PLANT
 CITY OF RAMSEY
 RAMSEY, MINNESOTA
 LANDSCAPE ENLARGEMENT PLAN

DRAWING TYPE
PRELIMINARY
 PREPARED BY
 BPR
 CHECKED / APPROVED
 MCA/MCA
 DATE
 JUNE 2022
 PROJECT NUMBER
 05434-2020-002

DRAWING
L101

1 - Shrub Size

Created by: Chris Anderson
On: 07/11/2022 08:34 AM

Shrubs shall be at least 24" in height. Update Plant Schedule to speciy size as 24" rather than container size.

----- 0 Replies -----

2 - Coniferous Tree Info

Created by: Chris Anderson
On: 07/11/2022 08:36 AM

The Plant Schedule is missing the coniferous trees. Please update to include the Norway Spruce and White Pines proposed on the plan sheet.

----- 0 Replies -----

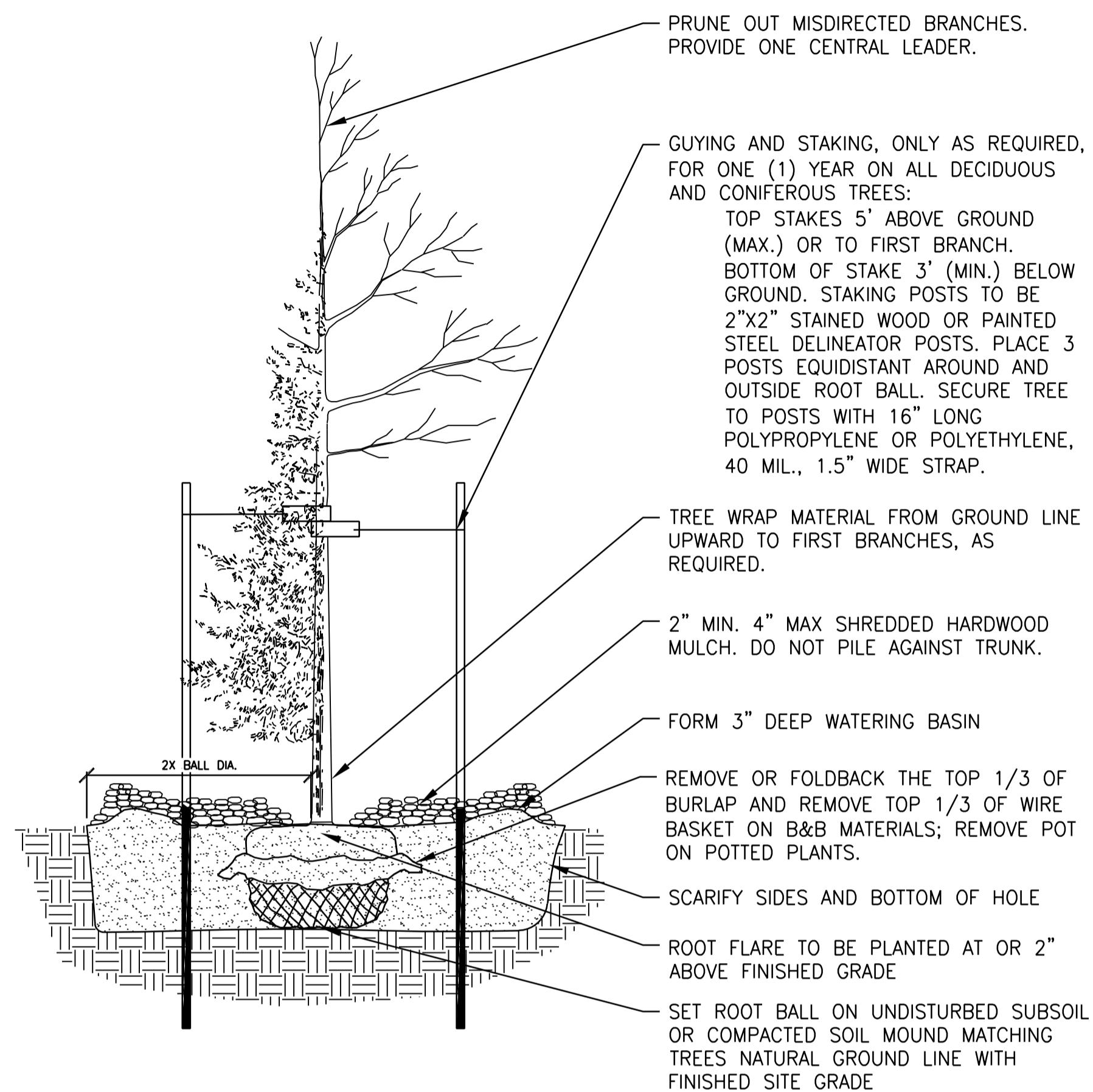
3 - Management Plan

Created by: Chris Anderson
On: 07/11/2022 08:37 AM

Please provide a detailed 3-5 year management plan for the prairie area. The plan shall describe the prescribed management activities, include a calendar of when these activities shall occur. A competent subcontractor shall be identified to perform the management activities.

----- 0 Replies -----

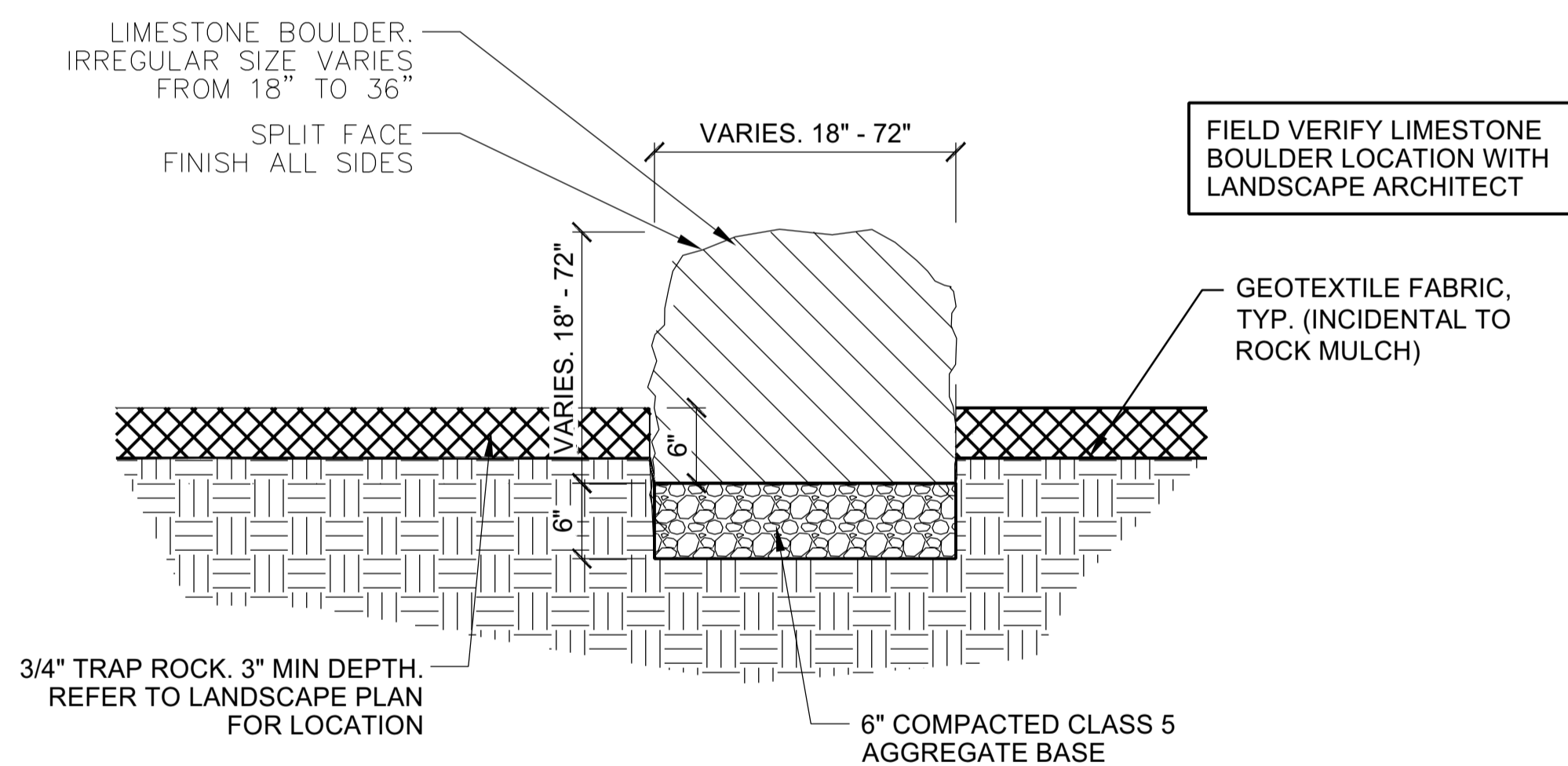
NOTE:
 TREES, SHRUBS, AND
 PERENNIALS TO BE
 INSTALLED BY OTHERS



DECIDUOUS/CONIFEROUS TREE PLANTING DETAIL

TREE PLANTING NOTES

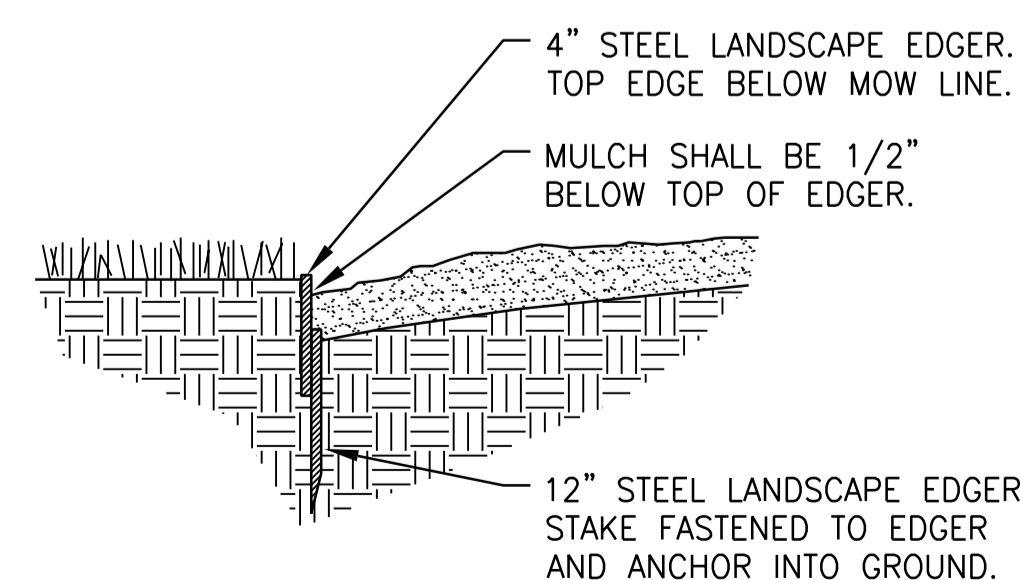
1. PRIOR TO PLANTING, FIELD VERIFY THAT THE ROOT COLLAR/ROOT FLAIR IS LOCATED AT THE TOP OF THE BALLED & BURLAP TREE. IF THIS IS NOT THE CASE, SOIL SHALL BE REMOVED DOWN TO THE ROOT COLLAR/ROOT FLAIR. WHEN THE BALLED & BURLAP TREE IS PLANTED, THE ROOT COLLAR/ROOT FLAIR SHALL BE EVEN OR SLIGHTLY ABOVE FINISHED GRADE.
2. OPEN TOP OF BURLAP ON B&B MATERIALS; REMOVE POT ON POTTED PLANTS; SPLIT AND BREAK APART PEAT POTS.
3. PRUNE PLANTS AS NECESSARY - PER STANDARD NURSERY PRACTICE AND TO CORRECT POOR BRANCHING AND TO FORM CENTRAL LEADER.
4. WRAP ALL SMOOTH-BARKED TREES - FASTEN TOP AND BOTTOM. REMOVE BY APRIL 1ST.
5. STAKING OF TREES AS REQUIRED; REPOSITION, PLUMB AND STAKE IF NOT PLUMB AFTER ONE YEAR.



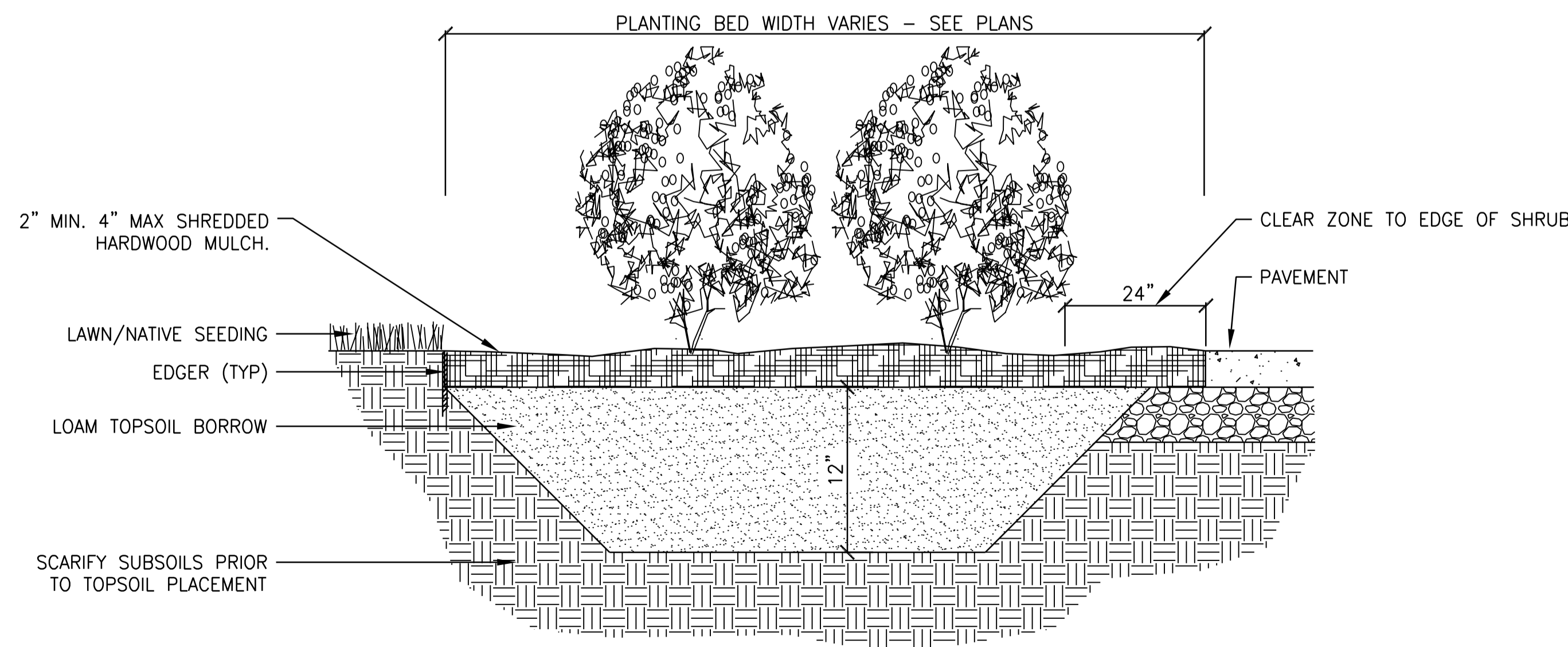
LIMESTONE BOULDER IN ROCK MULCH

EDGER NOTES

1. EDGING TO BE PROVIDED BETWEEN MULCH AND LAWN TURF AREAS, OR AS INDICATED. STEEL EDGING BETWEEN LANDSCAPE BEDS AND LAWN TURF AREAS TO BE COMMERCIAL BLACK STEEL EDGING, INSTALLED PER MANUFACTURER'S INSTALLATION GUIDELINES. BLACK STEEL EDGING SHALL BE PLACED WITH CONNECTORS AND METAL STAKES NO GREATER THAN 4-FOOT ON CENTER AND ELEVATION BELOW LAWN MOWER CUT LINE. UTILIZE CURBS AND SIDEWALKS FOR EDGING WHERE POSSIBLE. INDIVIDUAL TREE AND SHRUB AREAS TO BE SPADED EDGE BETWEEN MULCH AND LAWN TURF GRASS AREAS WITH V-SHAPED DEPTH AND WIDTH TO CREATE SEPARATION.



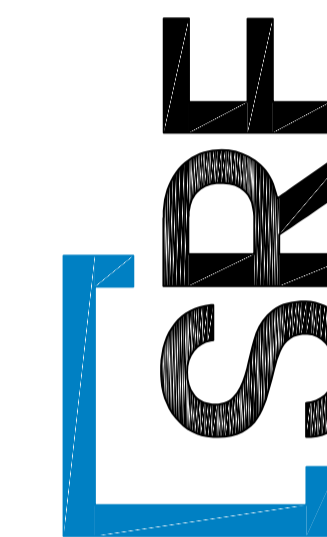
STEEL LANDSCAPE EDGER DETAIL



TYPICAL SHRUB/PERENNIAL PLANTING

I HEREBY CERTIFY THAT THIS PLAN WAS PREPARED BY ME OR UNDER MY DIRECT SUPERVISION AND THAT I AM A DULY LICENSED LANDSCAPE ARCHITECT UNDER THE LAWS OF THE STATE OF MINNESOTA.

SIGNATURE: JONATHAN W. FILLMORE
 PRINT NAME: JONATHAN W. FILLMORE
 DATE: 6/20/2022 LIC. NO.: 58679



RAMSEY WATER TREATMENT PLANT
 CITY OF RAMSEY
 RAMSEY, MINNESOTA

DRAWING TYPE
 PRELIMINARY
 PREPARED BY
 BPR
 CHECKED / APPROVED
 MCA/MCA
 DATE
 JUNE 2022
 PROJECT NUMBER
 05434-2020-002

DRAWING
L102

SYM	DATE	DESCRIPTION	APPR