

## HERITAGE FARM – Proposed Program + Use Area Diagram



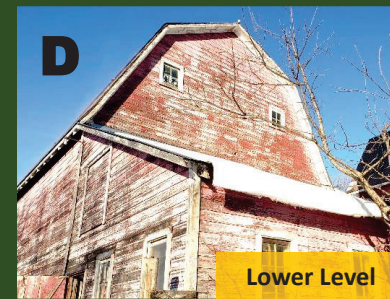
East Barn



Milk House



West Barn



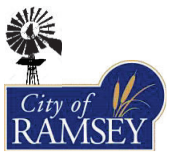
Lower Level



Storage Space



Silo



# HERITAGE FARM – existing barn components

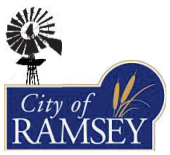


**1 – Milk House**  
 + Primary entrance  
 + Greeting area  
 + Restrooms  
 + Prep/catering kitchen

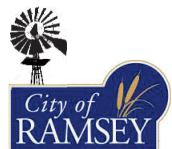
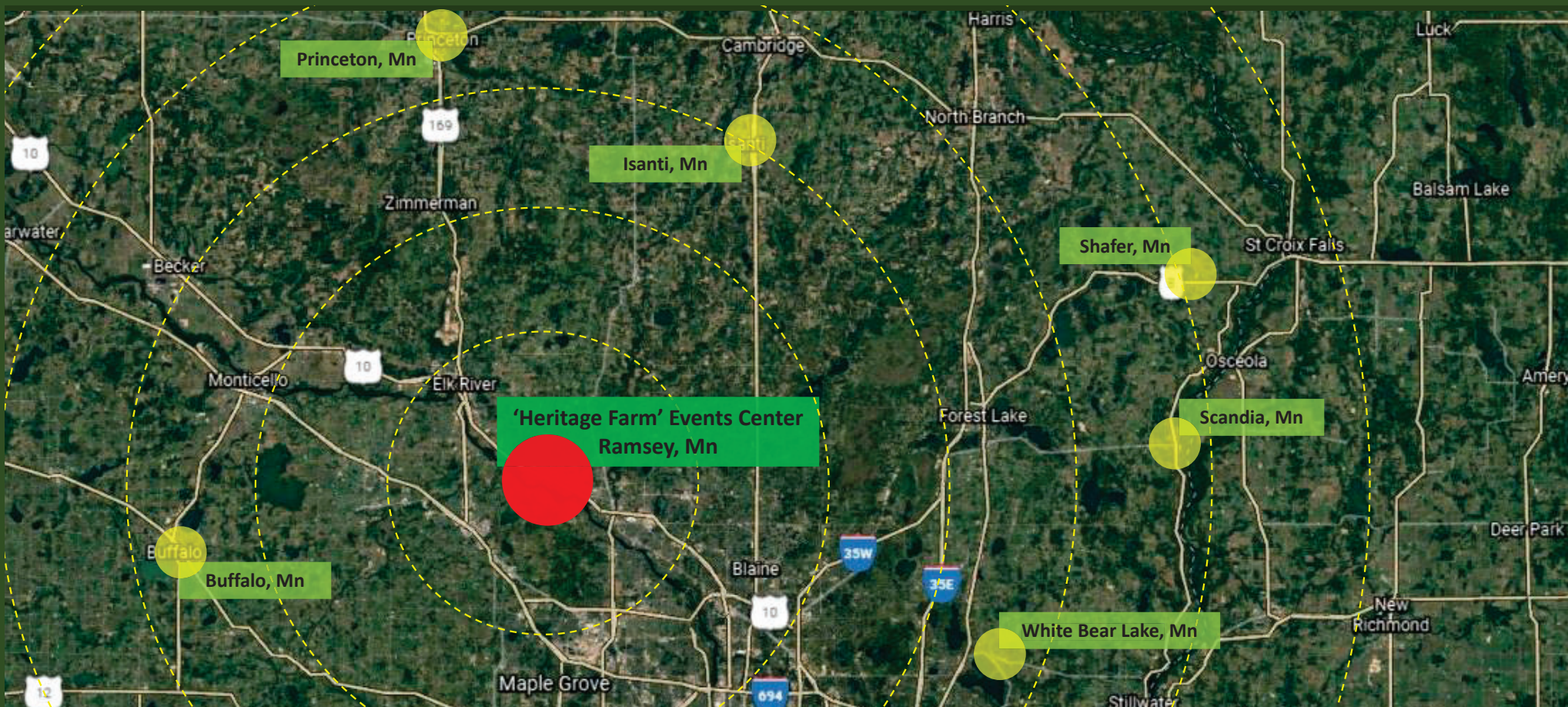
**2 – East Barn**  
 + Secondary entrance  
 + Smaller group space  
 + Storage

**3 – West Barn**  
 + Secondary entrance  
 + Larger group space  
 + Lower Level Storage  
 + Lower Level Mechanical

**4 – Deck Outdoor Seating**  
 + South Facing  
 + Great Views and Vistas



# HERITAGE FARM – proposed program at Events Center



**HERITAGE FARM – proximity to similar farmstead + barn venues**



PROJECT |

## HERITAGE FARM - VENUE COMPARISONS

DESIGNED BY |

LANDSCAPE ARCHITECTURE INCORPORATED

Click link to go to site:  
[Legacy Hill Farm | Wedding and Event Venue](#)

## **BLOOM LAKE BARN**

---

### **SHAFER, MN**

10,000 square feet of barn space for your use | Large covered outdoor areas | Party until  
Midnight Fri/Sat | 298 guests for seated dinner | Nearby lodging with shuttle service |  
Spectacular original architecture | Proximity to the picturesque river bluffs of Taylor's Falls

*Pricing* Fridays \$7995 | Saturdays \$9495 | Sundays \$6995 | Friday-Sunday of  
Holiday Weekends \$9495

Click link to go to site:  
[Bloom Lake Barn | Minnesota Wedding Barn + Event Venue](#)



# THE FARM AT FAIRHILL BUFFALO, MN

## Event Pricing

- 1 \ Friday Event  
\$6,900
- 2 \ Saturday Event  
\$7,500
- 3 \ Sunday or Weekday Event  
\$6,500
- 4 \ Day before a National Holiday  
\$7,500

Click link to go to site:  
[Venue | Thefarmatfairhill](#)



# THE HISTORIC DEGLMAN FARM

---

## PRINCETON, MN

### Venue Pricing

THE HISTORIC DEGLMAN FARM | MINNEAPOLIS, MN

Only one wedding is booked per weekend. Prices reflect access to the property for the duration of the weekend. Please call 612-867-8657 to find out more information about pricing for your wedding.

**Base Wedding Cost:** \$4,500

**Ceremony in yard** - \$300

**Hayride to and from ceremony for wedding party, pulled by 1944 Farmall Model B tractor** - \$100

**Chauffeur driven ride to and from ceremony in 1930 Ford Model A** - \$240

**Have Farmer Dave perform your ceremony** - \$150

**Friday evening rehearsal diner** - \$400

**After-event clean-up** - \$500

**Rental of pro audio system in barn in lieu of DJ** - \$240

**Rental of portable pro audio system for ceremony site** - \$100

**White, polyester tablecloths** - \$8/each

**Ceremony backdrop: refurbished, vintage doors** - \$50/both

#### Payment schedule

\$2,500 non-refundable deposit for date reservation

Balance due day before event

Click link to go to site:

[The Historic Deglman Farm | Wedding Venue](#)



# REDEEMED FARM

---

## SCANDIA, MN

WEDDINGS FOR 2022 + 2023

Experiences Starting at \$7000

[Inquire for Available Dates](#)

---

BEST OF WEDDINGS: The Knot - 2022, 2021, 2020, 2019

COUPLES CHOICE AWARDS: Wedding Wire - 2022, 2021, 2020, 2019

GLOBAL WEDDING AWARDS: Best Luxury Rural Wedding Venue - 2021 Minnesota

LUXLIFE: Client Service Excellence Award - 2021

MN BRIDE: - 2022, 2021, 2020, 2019

TOP 100 IN THE USA: The Venue Report

Click link to go to site:  
[Redeemed Farm - Vineyard & Farmstead](#)



**CIRCLE B RANCH**  
**ISANTI, MN**

**The Barn**

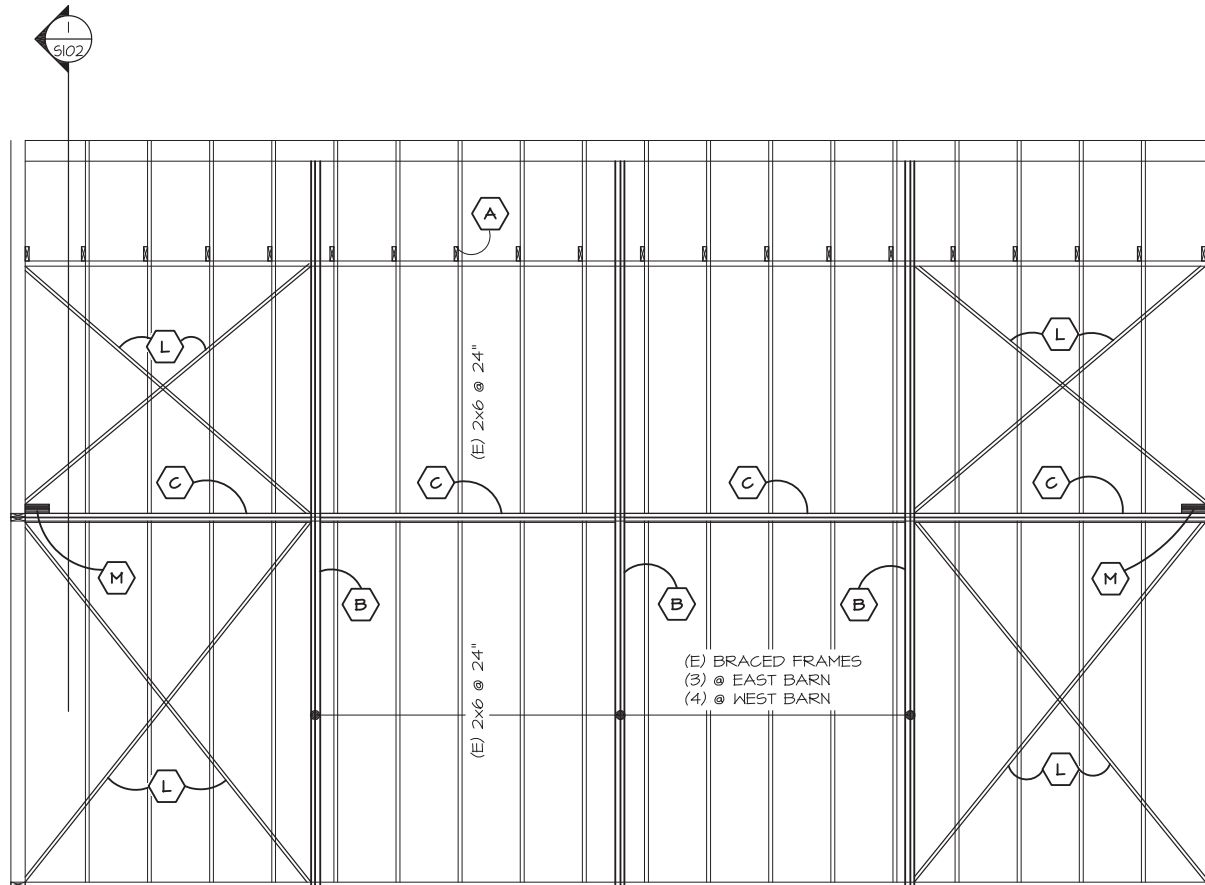
**NOW BOOKING 2021 & 2022 WEDDINGS**

Prices starting at \$7,000.00

Click link to go to site:  
Wedding Venue | Circle B Ranch







DRAWING ILLUSTRATES THE EAST BARN.  
THE WEST BARN HAS ONE ADDITIONAL BAY.

1 TYPICAL BARN SIDEWALL  
5101 1/4" = 1'-0"

REFER TO KEYNOTES ON 5100

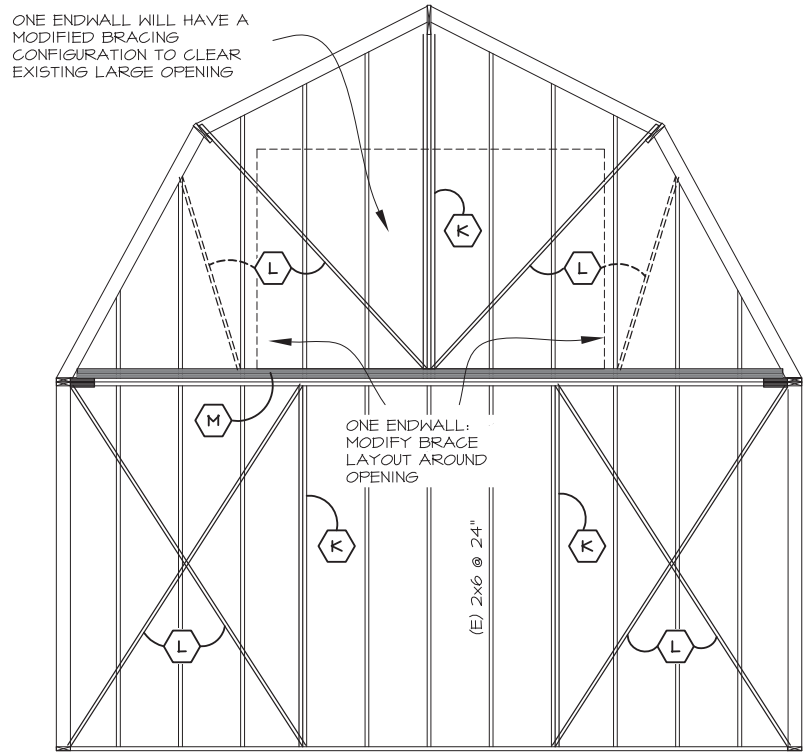
Project No. 21246  
Date 12/20/2021  
Drawn By dlm

Mattison Macdonald Young  
structural engineers  
Bassett Creek Business Center  
901 North 3rd Street, Suite 100  
Minneapolis, MN 55401  
612-827-7825 voice  
612-827-4662 fax



Heritage Park Barns  
Schematic Restoration Notes

5101



ONE ENDWALL WILL HAVE A MODIFIED BRACING CONFIGURATION TO CLEAR EXISTING LARGE OPENING

ONE ENDWALL: MODIFY BRACE LAYOUT AROUND OPENING

(E) 2x6 @ 24"

1 TYPICAL BARN ENDWALL  
S102 1/4" = 1'-0"

REFER TO KEYNOTES ON S100

Project No. 21246  
Date 12/20/2021  
Drawn By dhm

Mattison Macdonald Young  
**structural engineers**  
Bassett Creek Business Center  
901 North 3rd Street, Suite 100  
Minneapolis, MN 55401  
Tel: 612-827-0800  
Fax: 612-827-0805



Heritage Park Barns  
Schematic Restoration Notes

S102

# GENERAL CONDITIONS

Section	Description	Base Qty	Unit	Cost	Fixed \$	Extension Base
<b>01000</b>	<b>General Requirements</b>					
	Depreciation / Bus, GL, Auto, W/C					
00500(g)	Insurance (First \$2,500,000)	75	Job Cost K's	\$4.95	0	\$371.25
00620(g)	Insure (GL 2M+Umb 1M) 3M Agg	75	1,000's	\$2.20	0	\$165.00
00622(g)	Insurance (Bldg Risk) Wood	0	1,000's	\$2.85	\$450 Min	\$450.00
	Prorate for actual Months on job	0	Month	\$0.00	0	\$0.00
00890(g)	Permits (\$100,000)	75000	LS	2.00%	0	\$1,500.00
01000(g)	Architectural Services	0	LS		0	\$0.00
01006(g)	Engineering Services	0	LS		0	\$0.00
01310(L)	Project Manager 10hrs/contract	0	HRS	\$50.00	0	\$0.00
01312(L)	Supt Salary w/burden	4	WKS	\$2,000	0	\$8,000.00
	Supt Auto Allowance	4	WKS	\$300	0	\$1,200.00
01322(g)	Mileage	1500	Miles	\$0.565	0	\$847.50
01324(g)	Subsistence		Day	\$35	0	\$0.00
'01326(g)	Plan Copies	1	LS	\$40	0	\$40.00
01450(g)	Testing		LS		0	\$0.00
	Steel Bolting	1	LS	\$300	0	\$300.00
01511(g)	Cell Phone / Pager	1	Month	\$75	0	\$75.00
01524(g)	Sanitation (Temporary)	2	Month	\$125	0	\$250.00
01740(g)	Clean-up		Hr.	\$15	0	\$0.00
	Office (300 SF/Hr)		SF	\$0.05	0	\$0.00
	Warehouse Sweeping (1000SF/Hr)	2340	SF	\$0.015	0	\$35.10
01742(g)	Dumpsters (30 Yd Mixed)	0	Ea.	\$385	0	\$0.00
	Dumpsters (20 Yd Mixed)	1	Ea.	\$376	0	\$376.00
	GRAND TOTAL					\$13,609.85

# GENERAL CONDITIONS

Section	Description	Base Qty	Unit	Cost	Fixed \$	Extension Base
<b>01000</b>	<b>General Requirements</b>					
	Depreciation / Bus, GL, Auto, W/C					
00500(g)	Insurance (First \$2,500,000)	1200	Job Cost K's	\$4.95	0	\$5,940.00
00620(g)	Insure (GL 2M+Umb 1M) 3M Agg	1200	1,000's	\$2.20	0	\$2,640.00
00622(g)	Insurance (Bldg Risk) Wood	1200	1,000's	\$2.85	\$450 Min	\$3,420.00
00890(g)	Prorate for actual Months on job	0	Month	\$0.00	0	\$0.00
00892(g)	Permits (\$100,000)	1E+06	LS	1.16%	0	\$11,600.00
	SAC & WAC	2	Unit	\$2,485	0	\$4,970.00
	City SAC & WAC	2	Unit	\$0.00	0	\$0.00
01000(g)	Architectural Services	1	LS		0	\$0.00
01006(g)	Engineering Services	1	LS		0	\$0.00
01310(L)	Project Manager 10hrs/contract		HRS	\$50.00	0	\$0.00
01312(L)	Supt Salary w/burden	26	WKS	\$2,000	0	\$52,000.00
	Supt Auto Allowance	26	WKS	\$300	0	\$7,800.00
01322(g)	Mileage	8000	Miles	\$0.565	0	\$4,520.00
01326(g)	Photos		LS	\$40	0	\$0.00
	Plan Copies	10	LS	\$40	0	\$400.00
01450(g)	Testing	1	LS		5000	\$5,000.00
	Gradations - Sand		Ea.	\$75	0	\$0.00
	Gradations - Class V		Ea.	\$90	0	\$0.00
	Soil Compaction / Observation		Ea.	\$60	100	\$100.00
	Asphalt Cores		Ton	\$0.25	0	\$0.00
	Concrete Cylinders (per set)		Ea.	\$100	0	\$0.00
	Concrete Mix, Slump		Ea.	\$100	0	\$0.00
	Steel Bolting		LS	\$200	0	\$0.00
01511(g)	Cell Phone / Pager	6	Month	\$75	0	\$450.00
01515(g)	Temporary Electrical		MSF/Mo	\$40	\$0	\$0.00
	Trailer Hook-up	1	Ea.	\$0	\$200	\$200.00
01520(g)	Office Trailer 8' x 32'	6	Month	\$200	0	\$1,200.00
	Stairs	6	Month	\$49	0	\$294.00
	Pick Up & Delivery	2	Ea.	\$150	0	\$300.00
01524(g)	Sanitation (Temporary)	6	Month	\$125	0	\$750.00
01740(g)	Clean-up	2848	SF	\$15	0	\$0.00
	Office (300 SF/Hr)		SF	\$0.05	0	\$142.40
	Warehouse Sweeping (1000SF/Hr)	2500	SF	\$0.015	0	\$37.50
	Restroom (60 SF/Hr)	612	SF	\$0.25	0	\$153.00
	Exterior Windows 1 story	40	Ea.	\$15	0	\$600.00
	Interior Windows	40	Ea.	\$5	0	\$200.00
	Sheetrock Sweep & Mop (200 SF/H	1120	SF	\$15	0	\$84.00
	Spray Painting Sweep & Mop (350	1120	SF	\$15	0	\$48.00
01742(g)	Dumpsters (30 Yd Mixed)	4	Ea.	\$385	0	\$1,540.00
	Dumpsters (20 Yd Mixed)		Ea.	\$376	0	\$0.00
	Roll Off Demo See 02070 (30 Yd)		Ea.	\$385	0	\$0.00
	Office Remodel (7 yds/1000SF)		SF	\$0.0863	0	\$0.00
	Office (15 yds/1000SF)		SF	\$0.1685	0	\$0.00
	Warehouse (5yds/1000SF)		SF	\$0.056	0	\$0.00
01744(g)	Snow Removal		Snowfall	\$150	0	\$0.00
01745(g)	Street Sweeping				0	\$0.00
	GRAND TOTAL					\$104,388.90

## RAMSEY BARN STABILIZATION AND FARMHOUSE

CSI	Description	Qty	Unit	Matl	Matl Ext	Hrs	L Ext	Matl	Sub	Extension
<b>BARN STABILIZATION</b>										
02220(s)	Selective Demolition	1	LS	\$0	\$0	0	\$0			\$0
	Clean Up & Dispose Of	1	LS	\$0	\$0	120	\$9,000			\$9,000
	Dumpsters	2	Ea	\$400	\$800		\$0			\$800
06000(L)	Barn Stabilization	1	LS	\$0	\$0	240	\$18,001			\$18,001
06100(m)	Lumber Framing	1	LS	\$0	\$0		\$0	\$15,000		\$15,000
06105(m)	Misc. Hardware	1	LS	\$0	\$2,000		\$0			\$2,000
06190(m)	Secure Doors & Windows	1	LS	\$0	\$0	40	\$3,000	\$500		\$3,500
	Lift Rental	1	LS	\$0	\$0		\$0	\$900		\$900
	<b>SUBTOTAL</b>									<b>\$49,201</b>
06200(s)	<b>HOUSE CODE COMPLIANCE</b>	1	LS	\$0	\$0		\$0			\$0
	Exterior Painting - NIC	1	LS	\$0	\$0		\$0			\$0
	Gutters & Downspouts - NIC	1	LS	\$0	\$0		\$0			\$0
	Repair Windows	1	LS	\$0	\$0		\$0	\$600		\$600
	Improper Yard Drainage - NIC	1	LS	\$0	\$0		\$0			\$0
	Electric - Move Service Drop	1	LS	\$0	\$0		\$0	\$5,000		\$5,000
	Smoke Detectors	1	LS	\$0	\$0		\$0	\$2,000		\$2,000
	Furnace Condensate	1	LS	\$0	\$0		\$0	\$300		\$300
	Replace Water Filter	1	LS	\$0	\$0		\$0	\$100		\$100
	Water Heater TPR Tube	1	LS	\$0	\$0		\$0	\$300		\$300
	Repair Traps	1	LS	\$0	\$0		\$0	\$500		\$500
	Ghosting - NIC	1	LS	\$0	\$0		\$0			\$0
	Stair Handrail	1	LS	\$0	\$0		\$0	\$300		\$300
	Spray Fungus	1	LS	\$0	\$0		\$0	\$200		\$200
	Foundation Cracks - NIC	1	LS	\$0	\$0		\$0			\$0
	Radon Mitigation	1	LS	\$0	\$0		\$0	\$2,000		\$2,000
	<b>SUBTOTAL</b>									<b>\$11,300</b>
01000	<b>COMBINED SUBTOTAL</b>									<b>\$60,501</b>
	General Conditions									\$13,610
	<b>SUBTOTAL</b>									<b>\$74,111</b>
17000	Overhead/Profit	20%								\$14,822
	<b>SUBTOTAL</b>									<b>\$88,934</b>
00600(G)	Perf/Pay Bond	1.461%	First	\$500,000				Max \$7303	\$1,299	\$1,299
	<b>TOTAL</b>									<b>\$90,233</b>
	<b>Bid Price</b>									



## BARN RENOVATION FOR PUBLIC USE AS EVENT CENTER

CSI	Description	Qty	Unit	Matl	Matl Ext	Hrs	L Ext	Matl	Sub	Extension
09650(s)	Resilient Floor	1	LS	\$0	\$0		\$0			\$0
	Resilient Base	142	LF	\$2.00	\$284		\$0			\$284
09670(s)	Stained Concrete Flooring	280	SF	\$8	\$2,240		\$0			\$2,240
09900(s)	Painting Interior	3160	SF	\$1.50	\$4,740		\$0			\$4,740
	Painting Exterior	800	SF	\$2.50	\$2,000		\$0			\$2,000
10155(m)	Toilet Compartments	1	LS	\$0	\$0		\$3,525	\$7,500		\$11,025
10440(m)	Interior Signs	1	LS	\$0	\$0		\$56	\$250		\$306
10520(m)	Fire Extinguishers	1	LS	\$0	\$0		\$225	\$250		\$475
10800(m)	Toilet Accessories	1	LS	\$0	\$0		\$1,313	\$2,500		\$3,813
11400(s)	Food Service Equipt. NIC	1	LS	\$0	\$0		\$0			\$0
11450(m)	Residential Appliances NIC	1	LS	\$0	\$0		\$0			\$0
12490(m)	Window Treatments	1	LS	\$0	\$0		\$0		\$650	\$650
13700(s)	Security Systems NIC	1	LS	\$0	\$0		\$0			\$0
15300(s)	Fire Protection	1000	SF	\$20	\$0		\$0		\$15,000	\$15,000
	Riser & Valves	1	LS	\$5,000	\$0		\$0		\$5,000	\$5,000
15400(s)	Plumbing	17	Ea	\$6,000	\$0		\$0		\$102,000	\$102,000
15850(s)	HVAC	1	LS	\$0	\$0		\$0		\$25,000	\$25,000
16000(s)	Electrical	1	LS	\$0	\$0		\$0		\$75,000	\$75,000
16810(s)	Voice & Data	1	LS	\$0	\$0		\$0		\$5,000	\$5,000
	GC's & Profit									\$86,188
	Subtotal									\$517,129
	GRAND TOTAL									\$1,321,728
	Bid Price									