

7550 Sunwood Drive NW • Ramsey, MN 55303

City Hall: 763.427.1410 • Fax: 763.427.5543

www.cityoframsey.com

August 10, 2022

Re: Notification of Topographic Survey Collection to Study Potential Drainage Improvements

The purpose of this letter is to notify you that the City of Ramsey has hired Bolton & Menk, Inc. (BMI) to collect topographic survey data documenting existing surface features on several properties within your neighborhood, including yours. This topographic survey data will allow the City to study potential drainage improvements to help direct stormwater runoff across these properties while protecting homes from stormwater runoff intrusion. This survey work is anticipated to be completed on Friday, August 12, 2022.

In recent weeks I have discussed the need to collect topographic survey data on these properties with most of the property owners and all voiced their approval for survey to be collected on their property at no charge to them. I am currently working to personally contact the remaining property owners to request their approval for a portion of their property to be surveyed. If for any reason you do not approve of surveyors accessing your property to collect survey data, please inform the surveyors of this when you see them or contact me by email at bwestby@cityoframsey.com or phone at 763-433-9825 and I will direct them to keep off your property.

The attached exhibits highlight the existing drainage path that conveys stormwater runoff across the properties. Topographic survey will be collected along this drainage path over a width of approximately 50 feet, as well as along a path leading to the lowest opening of the home. Stormwater runoff that is being conveyed across these properties originates partially from City-owned right-of-way for streets, and partially from private properties. The topographic survey data being collected will include shots along edges of streets, driveways, culvert ends, power poles, trees, landscaping, and other features needed to develop a stormwater model and design plans.

Please know that improvements would not be constructed without City Council approval and Staff would first request a recommendation for City Council approval from the Public Works Committee. Also know that I would contact you before bringing anything to the Public Works Committee. Please contact me with any questions about this letter, the proposed survey work, or any other questions or concerns related to this matter.

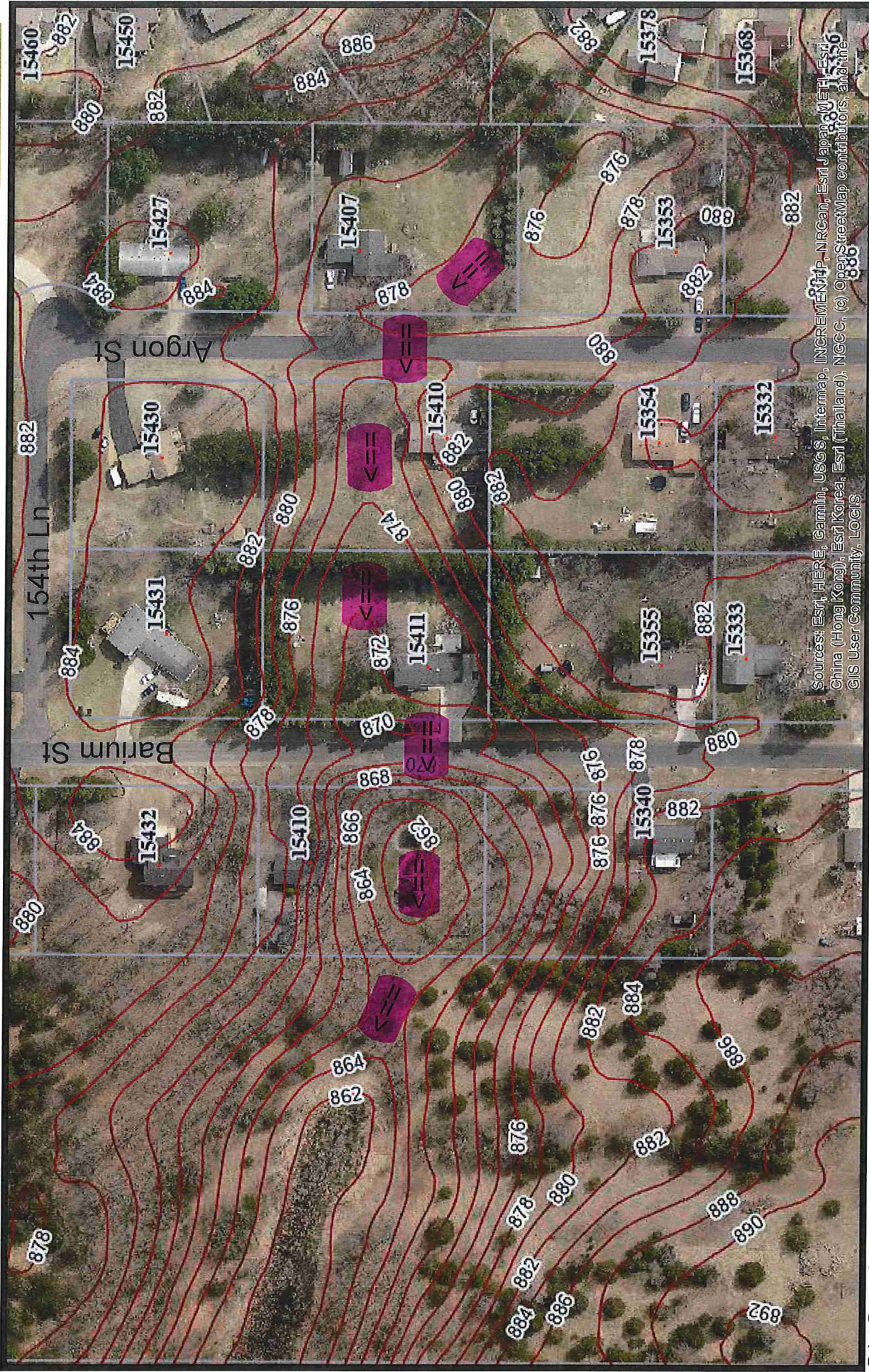
Sincerely,

Bruce Westby, P.E.
City Engineer

Two-Foot Contours and 2020 Aerial Image



 Drainage Path (Approx.)



Sources: Esri, HERE, Garmin, USGS, Intermap, INCREMENTAL, NRCAN, Esri Japan, CNES, Esri Korea, Esri (Thailand), NGCC, (c) OpenStreetMap contributors, and the GIS User Community, LOGIS

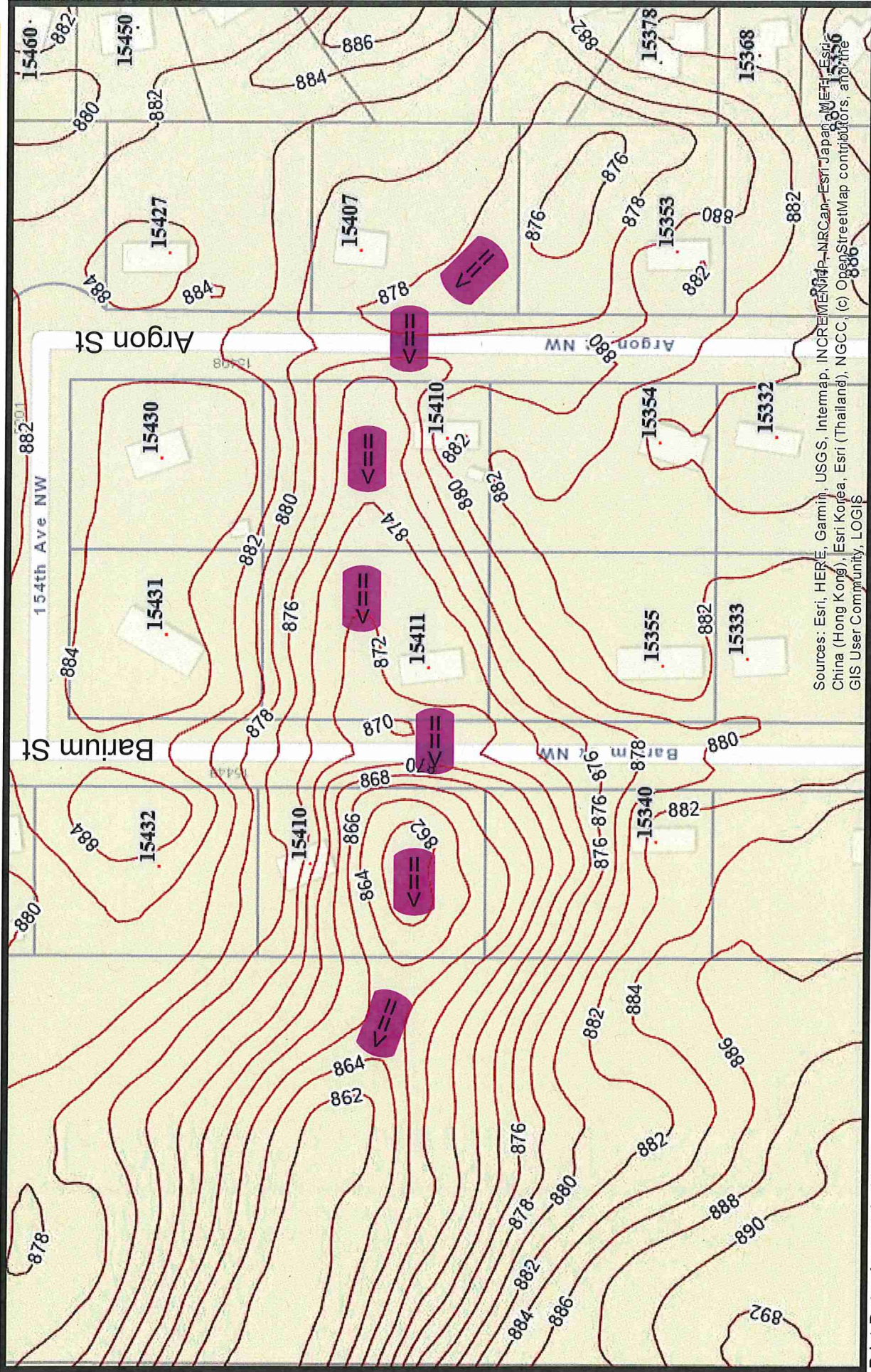
Print Date: August 9, 2022



Two-Foot Contours



 Drainage Path (Approx.)



Sources: Esri, HERE, Garmin, USGS, Intermap, INCREMENTAL, Navteq, NRC Canada, Esri Japan, Swire, Esri Korea, Esri (Hong Kong), Esri Korea, Esri (Thailand), NGCC, (c) OpenStreetMap contributors, and the GIS User Community, LOGIS

