

CITY OF RAMSEY

WETLAND 114P OUTLET MODIFICATIONS

CITY IMPROVEMENT PROJECT NO. 19-07

GOVERNING SPECIFICATIONS

THE 2020 EDITION OF THE MINNESOTA DEPARTMENT OF TRANSPORTATION "STANDARD SPECIFICATIONS FOR CONSTRUCTION" SHALL GOVERN.

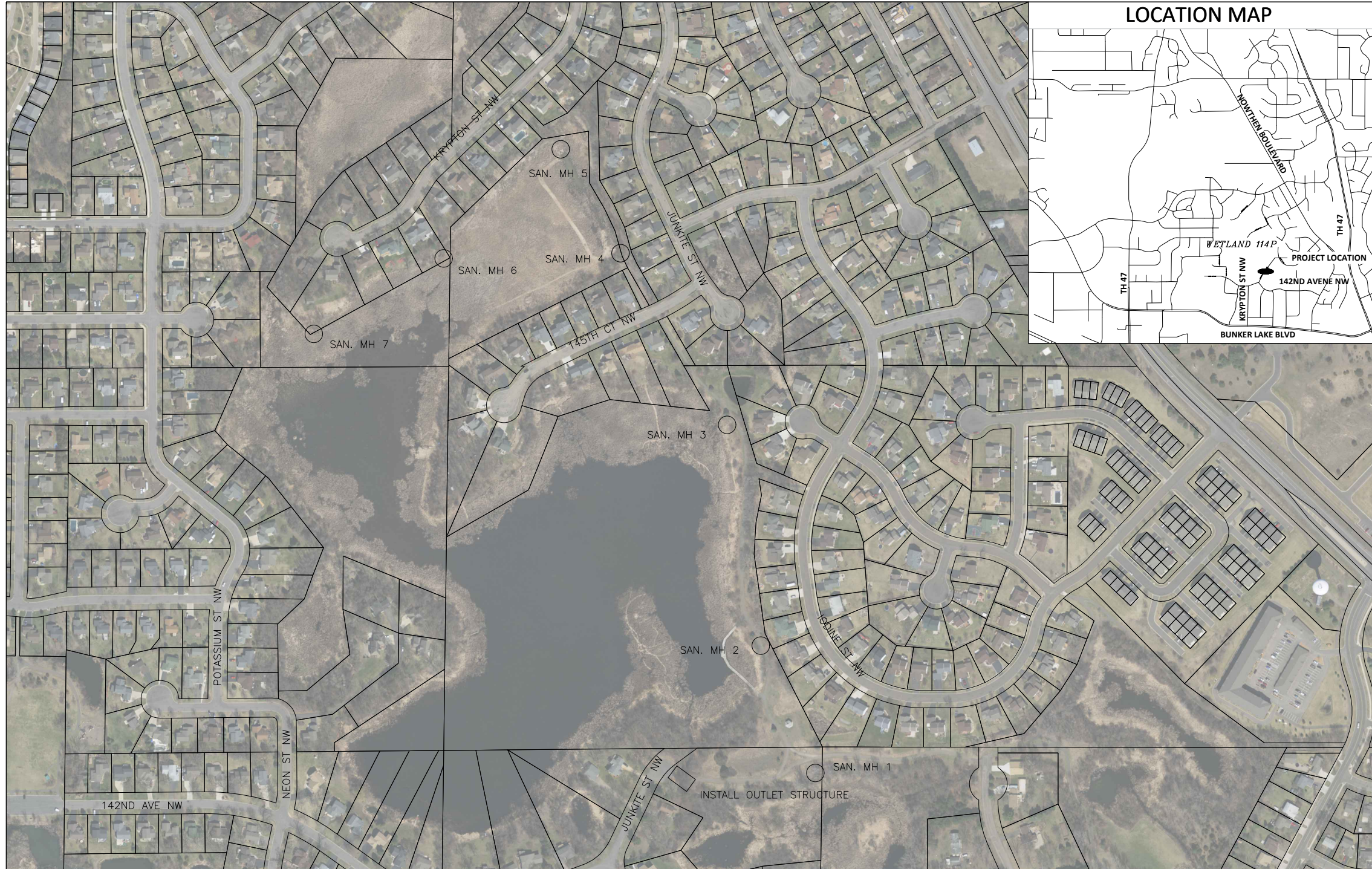
ALL FEDERAL, STATE AND LOCAL LAWS, REGULATIONS AND ORDINANCES SHALL BE COMPLIED WITH IN THE CONSTRUCTION OF THIS PROJECT.

ALL TRAFFIC CONTROL DEVICES AND SIGNING SHALL CONFORM TO THE MINNESOTA MANUAL ON UNIFORM TRAFFIC CONTROL DEVICES, INCLUDING THE FIELD MANUAL FOR TEMPORARY TRAFFIC CONTROL ZONE LAYOUTS.

SHEET INDEX

THIS PLAN CONTAINS 5 SHEETS

SHEET No.	DESCRIPTION
1	TITLE SHEET
2	STATEMENT OF ESTIMATED QUANTITIES
3	EXISTING CONDITIONS
4	OUTLET CONTROL STRUCTURE PLAN, PROFILE AND DETAIL
5	SANITARY MANHOLE CASTING ADJUSTMENTS
6	SANITARY MANHOLE CASTING ADJUSTMENTS



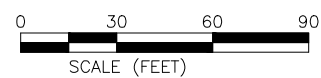
LEGEND

	LIGHT POLE		EASEMENT
	TREE		RIGHT OF WAY
	TREE		ELECTRIC
	SHRUB		OVERHEAD ELECTRIC
	SIGN		GAS
	VALVE		TELECOMMUNICATIONS
	UTILITY PEDESTAL		STORM SEWER
	HAND HOLE		SANITARY SEWER
	REMOVE TREE		WATERMAIN
	3'x2' CATCH BASIN		SAWCUT PAVEMENT
	MANHOLE		TREE LINE
	INLET PROTECTION		FENCE
	HYDRANT		LANDSCAPING
	VALVE		RETAINING WALL
			5' CONTOUR LINE
			1' CONTOUR LINE

I hereby certify that this plan, specification, or report was prepared by me or under my direct supervision and that I am a duly Licensed Professional Engineer under the laws of the State of Minnesota.

LEONARD LINTON, P.E. 21112 DATE 8/10/22
CITY OF RAMSEY LIC. NO.

DATE	REVISION



CITY OF RAMSEY
7550 SUNWOOD DRIVE
RAMSEY, MN 55303
(763) 427-1410 FAX (763) 433-9898

THE SUBSURFACE UTILITY INFORMATION IN THIS PLAN IS UTILITY QUALITY LEVEL D. THIS QUALITY LEVEL WAS DETERMINED ACCORDING TO THE GUIDELINES OF CI/ASCE 38-02, ENTITLED "STANDARD GUIDELINES FOR THE COLLECTION AND DEPICTION OF EXISTING SUBSURFACE UTILITY DATA."

NOTE: EXISTING UTILITY INFORMATION SHOWN ON THIS PLAN HAS BEEN PROVIDED BY THE UTILITY OWNER. THE CONTRACTOR SHALL FIELD VERIFY EXACT LOCATIONS PRIOR TO COMMENCING CONSTRUCTION AS REQUIRED BY STATE LAW. NOTIFY GOPHER STATE ONE CALL 1-800-252-1166 OR 651-454-0002



Call before you dig
811
651-454-0002 Metro
800-252-1166 Outstate
www.gopherstateonecall.org