

PLAN KEYNOTES:

- 01 ANODIZED ALUM. SHIPS LADDER WITH PIPE RAILING (PROVIDE DISSIMILAR MATERIAL SEPARATION BETWEEN ALUM. AND STEEL). ALL WELDS TO BE GROUND SMOOTH - SEE DETAIL ??? FOR MORE INFORMATION
- 02 BOLT-DOWN ANODIZED ALUM. PIPE GUARD RAILING (PROVIDE DISSIMILAR MATERIAL SEPARATION BETWEEN ALUM. AND STEEL). ALL WELDS TO BE GROUND SMOOTH - SEE DETAIL ??? FOR MORE INFORMATION
- 03 CAST-IN ALUM. FLOOR HATCH - SEE HATCH SCHEDULE FOR MORE INFORMATION
- 04 STEEL STAIR WITH FRP TREAD GRATING AND ANODIZED ALUM. PIPE GUARD AND HAND RAILING (PROVIDE DISSIMILAR MATERIAL SEPARATION BETWEEN ALUM. AND STEEL). ALL WELDS TO BE GROUND SMOOTH, PAINT ALL EXPOSED STEEL - SEE DETAIL ??? FOR MORE INFORMATION
- 05 BOLT-DOWN FRP PIPE GUARD RAILING - SEE DETAIL ??? FOR MORE INFORMATION
- 06 ANODIZED ALUM. ROOF ACCESS LADDER WITH PIPE RAILING (PROVIDE DISSIMILAR MATERIAL SEPARATION BETWEEN ALUM. AND STEEL). ALL WELDS TO BE GROUND SMOOTH - SEE DETAIL ??? FOR MORE INFORMATION
- 07 STRUCTURAL CONCRETE STOOP - SEE STRUCTURAL FOR MORE INFORMATION
- 08 INTEGRAL 2" WIDE WATER WICK AT PERIMETER OF TANK WALLS - SEE DETAIL ??? FOR MORE INFORMATION
- 09 CONCRETE FILLED 6" DIA. STEEL PIPE BOLLARD. PROVIDE PLASTIC BOLLARD COVERS AT EXTERIOR LOCATIONS - TYP.
- 10 PROVIDE CONCRETE HOUSE KEEPING PAD FOR ALL MECHANICAL EQUIPMENT - VERIFY ACTUAL SIZE IN FIELD
- 11 PROVIDE 3/4" PLYWOOD BACKER @ WALLS OF TECH. AND ELECTRICAL ROOM AS REQ. VERIFY LOCATION IN FIELD WITH VENDORS
- 12 RECYCLING SPACE IN ACCORDANCE WITH MN BUILDING CODE PROVISION 1303.1600
- 13 FIRE DEPARTMENT CONNECTION - SEE MECH. FOR MORE INFORMATION
- 14 (3) HEAVY DUTY PLYWOOD SHELVES WITH ADJUSTABLE TRACK SYSTEM - VERIFY EXTENTS IN FIELD
- 15 OVERHEAD CRANE - SEE STRUCTURAL FOR DETAILS/NOTES. STRUCTURAL CONNECTIONS BY CRANE PROVIDER. STRUCTURAL TO PROVIDE SUPERSTRUCTURE THAT CAN SUPPORT CRANE AND LOAD
- 16 PRE-FINISHED THROUGH WALL ROOF SCUPPER AND DOWNSPOUT
- 17 ROOF DRAIN - SEE DETAIL ??? FOR MORE INFORMATION
- 18 2x2' CONCRETE ROOF PAVER
- 19 SOLID SURFACE COUNTERTOP AND BACKSPLASH OVER CASEWORK WITH PLASTIC LAMINATE FINISH - SEE INTERIOR ELEVATIONS FOR LAYOUT AND ADDITIONAL INFORMATION
- 20 STAINLESS STEEL SINK - SEE MECH. FOR MORE INFORMATION
- 21 INTEGRAL SOLID SURFACE SAMPLE SINK, PROVIDE (6) WATER TAPS PLUS (1) SERVICE TAP - SEE MECH./DETAIL ??? FOR MORE INFORMATION
- 22 DUAL HEIGHT, ACCESSIBLE WATER COOLER AND JUG FILLER - SEE MECH. INSTALL PER MN STATE ACCESSIBILITY CODE, SECTION 1341
- 23 STAINLESS STEEL ADA GRAB BARS PER MN STATE ACCESSIBILITY CODE - SECTION 1341
- 24 WALL MOUNTED TOILET FIXTURE - SEE MECH. FOR MORE INFORMATION
- 25 WALL MOUNTED ALL-IN-ONE SINK - SEE MECH. FOR MORE INFORMATION
- 26 WALL MOUNTED 2x3' MIRROR WITH PRE-FINISHED ALUM. FRAME
- 27 SEM-RECESSED TOILET ACCESSORIES PER MN STATE ACCESSIBILITY CODE - SECTION 1341
- 28 WALL MOUNTED URINAL FIXTURE - SEE MECH. FOR MORE INFORMATION
- 29 JANITOR MOP SINK, PROVIDE FRP WALL PANELS AT ADJACENT SIDES THAT ARE NOT BLOCK - SEE MECH. FOR MORE INFORMATION
- 30 WALL MOUNTED T.V. SCREENS BY OWNER
- 31 UNDER COUNTER MINI FRIDGE BY OWNER
- 32 EMERGENCY EYE WASH STATION - SEE MECH. FOR MORE INFORMATION
- 33 FLOOR DRAIN - SEE MECH. FOR MORE INFORMATION
- 34 WALL MOUNTED AND/OR RECESS FIRE EXTINGUISHER
- 35 NOT USED

FIRE RATED WALLS:

- 1HR RATED FIRE BARRIER/HORIZONTAL ASSEMBLY
- 2 HR RATED FIRE BARRIER/HORIZONTAL ASSEMBLY

ALL FIRE BARRIER WALLS TO BE MARKED AND IDENTIFIED PER SEC. 707.3. FIELD VERIFY WITH ARCHITECT/OWNER LOCATION AND COLOR

GENERAL NOTES:

PLAN NOTES ARE TYPICAL FOR ALL BUILDING PLANS. SOME NOTES MAY NOT BE LOCATED ON ONE PLAN VIEW, BUT ARE STILL APPLICABLE WITHIN THE PROJECT

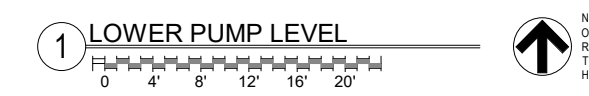
FIRE BARRIERS PER MNBC SEC. 707 HORIZONTAL ASSEMBLIES PER MNBC SEC. 711

SEE SHEET ??? FOR TYPICAL PENETRATION DETAILS IN FIRE RATED ASSEMBLIES

ALL JOINTS (FLOOR, CEILING OR STRUCTURE, AND WALL TO STRUCTURE) SHALL BE SEALED TO MEET FIRE RATING REQUIREMENTS

OA WALL SCHEDULE

TYPE	GRAPHIC	CONSTRUCTION ASSEMBLY		TOTAL THICKNESS	FIRE RATING	NOTES
		SURFACE 1	SURFACE 2			
A		-	12" BLOCK	0' - 11 5/8"		SURFACE MOUNTED ELECTRICAL CONDUIT AND BOXES
B		-	8" BLOCK	0' - 7 5/8"		SURFACE MOUNTED ELECTRICAL CONDUIT AND BOXES
E		5/8" GYP BD	2" MTL. FURRING	0' - 2 5/8"		
F		5/8" GYP BD	6" MTL. STUD	5/8" GYP BD	0' - 7 1/4"	MOISTURE RESISTANT GYP BD AT ALL WET LOCATIONS
G		5/8" GYP BD	6" MTL. STUD	5/8" GYP BD	0' - 6 5/8"	MOISTURE RESISTANT GYP BD AT ALL WET LOCATIONS



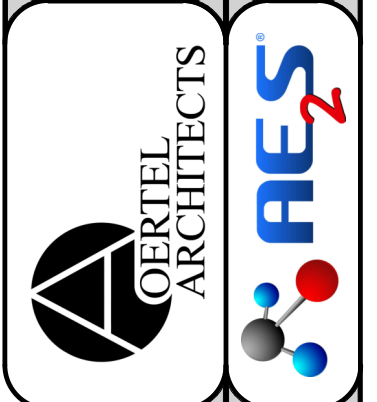
I HEREBY CERTIFY THAT THIS PLAN, SPECIFICATION, OR REPORT WAS PREPARED BY ME OR UNDER MY DIRECT SUPERVISION AND THAT I AM A DULY LICENSED ARCHITECT UNDER THE LAWS OF THE STATE OF MINNESOTA.

SIGNATURE: _____

TYPED NAME: THOMAS STROMSDOTT

FEBRUARY 9TH, 2021

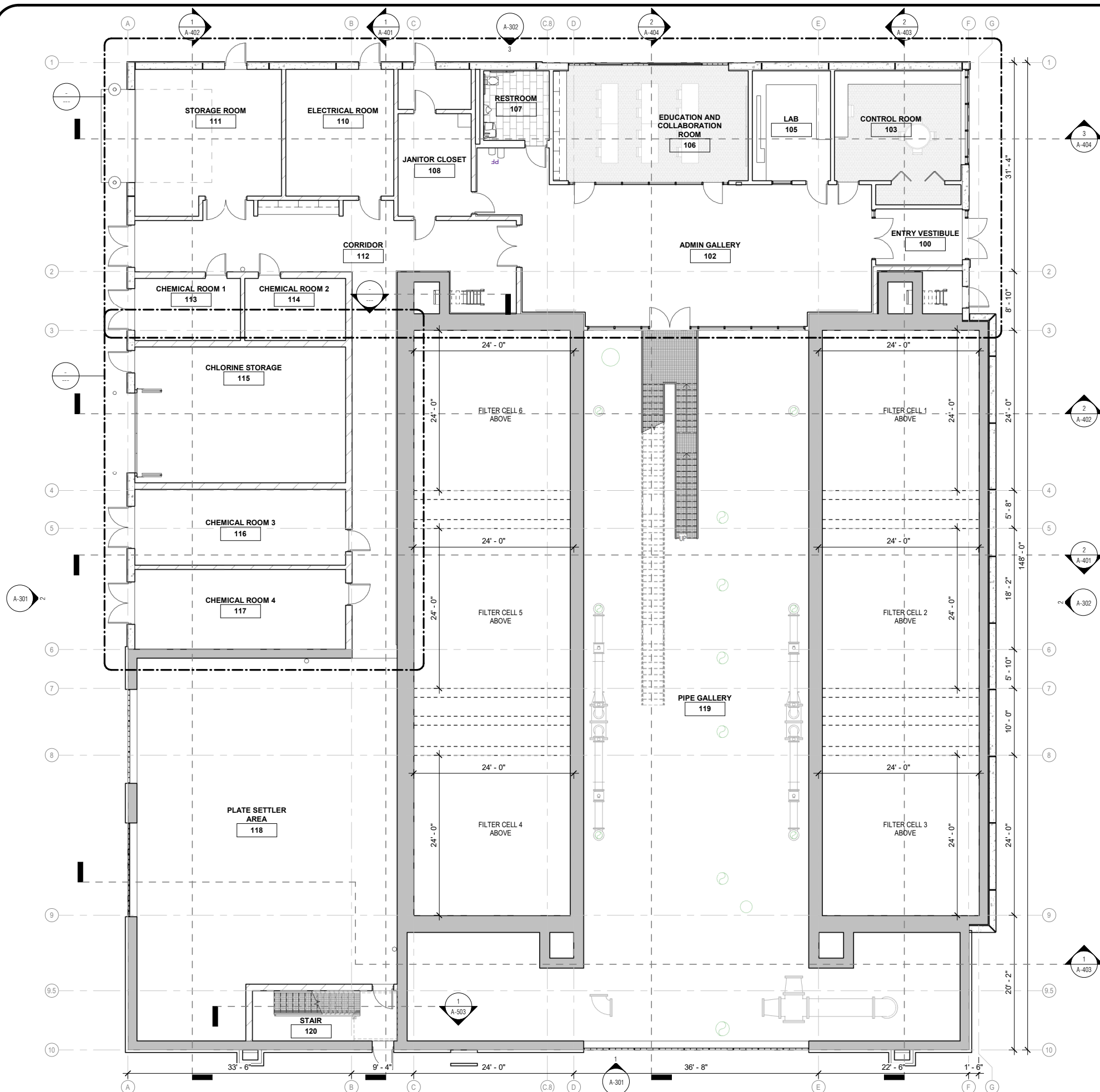
REG. NO. 48038



PRELIMINARY
NOT FOR CONSTRUCTION
 PLANNING COMMISSION

RAMSEY WTP
 CITY OF RAMSEY
 RAMSEY, MN
 LOWER LEVEL FLOOR PLAN

DRAWING TYPE
PRELIMINARY
 PREPARED BY
 DCE
 CHECKED / APPROVED
 ANC / JLO
 DATE
 PROJECT NUMBER
 FACILITY
 DRAWING
A-101



PLAN KEYNOTES:

- 01 ANODIZED ALUM. SHIPS LADDER WITH PIPE RAILING (PROVIDE DISSIMILAR MATERIAL SEPARATION BETWEEN ALUM. AND STEEL). ALL WELDS TO BE GROUND SMOOTH - SEE DETAIL ??? FOR MORE INFORMATION
- 02 BOLT-DOWN ANODIZED ALUM. PIPE GUARD RAILING (PROVIDE DISSIMILAR MATERIAL SEPARATION BETWEEN ALUM. AND STEEL). ALL WELDS TO BE GROUND SMOOTH - SEE DETAIL ??? FOR MORE INFORMATION
- 03 CAST-IN ALUM. FLOOR HATCH - SEE HATCH SCHEDULE FOR MORE INFORMATION
- 04 STEEL STAIR WITH FRP TREAD GRATING AND ANODIZED ALUM. PIPE GUARD AND HAND RAILING (PROVIDE DISSIMILAR MATERIAL SEPARATION BETWEEN ALUM. AND STEEL). ALL WELDS TO BE GROUND SMOOTH, PAINT ALL EXPOSED STEEL - SEE DETAIL ??? FOR MORE INFORMATION
- 05 BOLT-DOWN FRP PIPE GUARD RAILING - SEE DETAIL ??? FOR MORE INFORMATION
- 06 ANODIZED ALUM. ROOF ACCESS LADDER WITH PIPE RAILING (PROVIDE DISSIMILAR MATERIAL SEPARATION BETWEEN ALUM. AND STEEL). ALL WELDS TO BE GROUND SMOOTH - SEE DETAIL ??? FOR MORE INFORMATION
- 07 STRUCTURAL CONCRETE STOOP - SEE STRUCTURAL FOR MORE INFORMATION
- 08 INTEGRAL 2" WIDE WATER WICK AT PERIMETER OF TANK WALLS - SEE DETAIL ??? FOR MORE INFORMATION
- 09 CONCRETE FILLED 6" DIA. STEEL PIPE BOLLARD. PROVIDE PLASTIC BOLLARD COVERS AT EXTERIOR LOCATIONS - TYP.
- 10 PROVIDE CONCRETE HOUSE KEEPING PAD FOR ALL MECHANICAL EQUIPMENT - VERIFY ACTUAL SIZE IN FIELD
- 11 PROVIDE 3/4" PLYWOOD BACKER @ WALLS OF TECH. AND ELECTRICAL ROOM AS REQ. VERIFY LOCATION IN FIELD WITH VENDORS
- 12 RECYCLING SPACE IN ACCORDANCE WITH MN BUILDING CODE PROVISION 1303.1600
- 13 FIRE DEPARTMENT CONNECTION - SEE MECH. FOR MORE INFORMATION
- 14 (3) HEAVY DUTY PLYWOOD SHELVES WITH ADJUSTABLE TRACK SYSTEM - VERIFY EXTENTS IN FIELD
- 15 OVERHEAD CRANE - SEE STRUCTURAL FOR DETAILS/NOTES. STRUCTURAL CONNECTIONS BY CRANE PROVIDER. STRUCTURAL TO PROVIDE SUPERSTRUCTURE THAT CAN SUPPORT CRANE AND LOAD
- 16 PRE-FINISHED THROUGH WALL ROOF SCUPPER AND DOWNSPOUT
- 17 ROOF DRAIN - SEE DETAIL ??? FOR MORE INFORMATION
- 18 2'x2' CONCRETE ROOF PAVER
- 19 SOLID SURFACE COUNTERTOP AND BACKSPLASH OVER CASEWORK WITH PLASTIC LAMINATE FINISH - SEE INTERIOR ELEVATIONS FOR LAYOUT AND ADDITIONAL INFORMATION
- 20 STAINLESS STEEL SINK - SEE MECH. FOR MORE INFORMATION
- 21 INTEGRAL SOLID SURFACE SAMPLE SINK. PROVIDE (6) WATER TAPS PLUS (1) SERVICE TAP - SEE MECH./DETAIL ??? FOR MORE INFORMATION
- 22 DUAL HEIGHT, ACCESSIBLE WATER COOLER AND JUG FILLER - SEE MECH. INSTALL PER MN STATE ACCESSIBILITY CODE, SECTION 1341
- 23 STAINLESS STEEL ADA GRAB BARS PER MN STATE ACCESSIBILITY CODE - SECTION 1341
- 24 WALL MOUNTED TOILET FIXTURE - SEE MECH. FOR MORE INFORMATION
- 25 WALL MOUNTED ALL-IN-ONE SINK - SEE MECH. FOR MORE INFORMATION
- 26 WALL MOUNTED 2'x3' MIRROR WITH PRE-FINISHED ALUM. FRAME
- 27 SEMI-RECESSED TOILET ACCESSORIES PER MN STATE ACCESSIBILITY CODE - SECTION 1341
- 28 WALL MOUNTED URINAL FIXTURE - SEE MECH. FOR MORE INFORMATION
- 29 JANITOR MOP SINK. PROVIDE FRP WALL PANELS AT ADJACENT SIDES THAT ARE NOT BLOCK - SEE MECH. FOR MORE INFORMATION
- 30 WALL MOUNTED T.V. SCREENS BY OWNER
- 31 UNDER COUNTER MINI FRIDGE BY OWNER
- 32 EMERGENCY EYE WASH STATION - SEE MECH. FOR MORE INFORMATION
- 33 FLOOR DRAIN - SEE MECH. FOR MORE INFORMATION
- 34 WALL MOUNTED AND/OR RECESS FIRE EXTINGUISHER
- 35 NOT USED

FIRE RATED WALLS:

- 1HR RATED FIRE BARRIER/HORIZONTAL ASSEMBLY
- 2 HR RATED FIRE BARRIER/HORIZONTAL ASSEMBLY

ALL FIRE BARRIER WALLS TO BE MARKED AND IDENTIFIED PER SEC. 707.3. FIELD VERIFY WITH ARCHITECT/OWNER LOCATION AND COLOR

GENERAL NOTES:

PLAN NOTES ARE TYPICAL FOR ALL BUILDING PLANS. SOME NOTES MAY NOT BE LOCATED ON ONE PLAN VIEW, BUT ARE STILL APPLICABLE WITHIN THE PROJECT

FIRE BARRIERS PER MNBC SEC. 707 HORIZONTAL ASSEMBLIES PER MNBC SEC. 711

SEE SHEET ??? FOR TYPICAL PENETRATION DETAILS IN FIRE RATED ASSEMBLIES

ALL JOINTS (FLOOR, CEILING OR STRUCTURE, AND WALL TO STRUCTURE) SHALL BE SEALED TO MEET FIRE RATING REQUIREMENTS

OA WALL SCHEDULE

TYPE	GRAPHIC	CONSTRUCTION			TOTAL THICKNESS	FIRE RATING	NOTES
		SURFACE 1	ASSEMBLY CORE	SURFACE 2			
A		-	12" BLOCK	-	0' - 11 5/8"		SURFACE MOUNTED ELECTRICAL CONDUIT AND BOXES
B		-	8" BLOCK	-	0' - 7 5/8"		SURFACE MOUNTED ELECTRICAL CONDUIT AND BOXES
E		5/8" GYP BD	2" MTL. FURRING	-	0' - 2 5/8"		
F		5/8" GYP BD	6" MTL. STUD	5/8" GYP BD	0' - 7 1/4"		MOISTURE RESISTANT GYP BD AT ALL WET LOCATIONS
G		5/8" GYP BD	6" MTL. STUD	-	0' - 6 5/8"		MOISTURE RESISTANT GYP BD AT ALL WET LOCATIONS

1 OVERALL FIRST FLOOR PLAN



I HEREBY CERTIFY THAT THIS PLAN, SPECIFICATION, OR REPORT WAS PREPARED BY ME OR UNDER MY DIRECT SUPERVISION AND THAT I AM A DULY LICENSED ARCHITECT UNDER THE LAWS OF THE STATE OF MINNESOTA.

SIGNATURE: _____
 TYPED NAME: THOMAS STROMSDOTT
 FEBRUARY 9TH, 2021 REG. NO. 48038



PRELIMINARY
NOT FOR CONSTRUCTION
 PLANNING COMMISSION

RAMSEY WTP
 CITY OF RAMSEY
 RAMSEY, MN
 MAIN LEVEL FLOOR PLAN

DRAWING TYPE
PRELIMINARY

PREPARED BY
 DCE

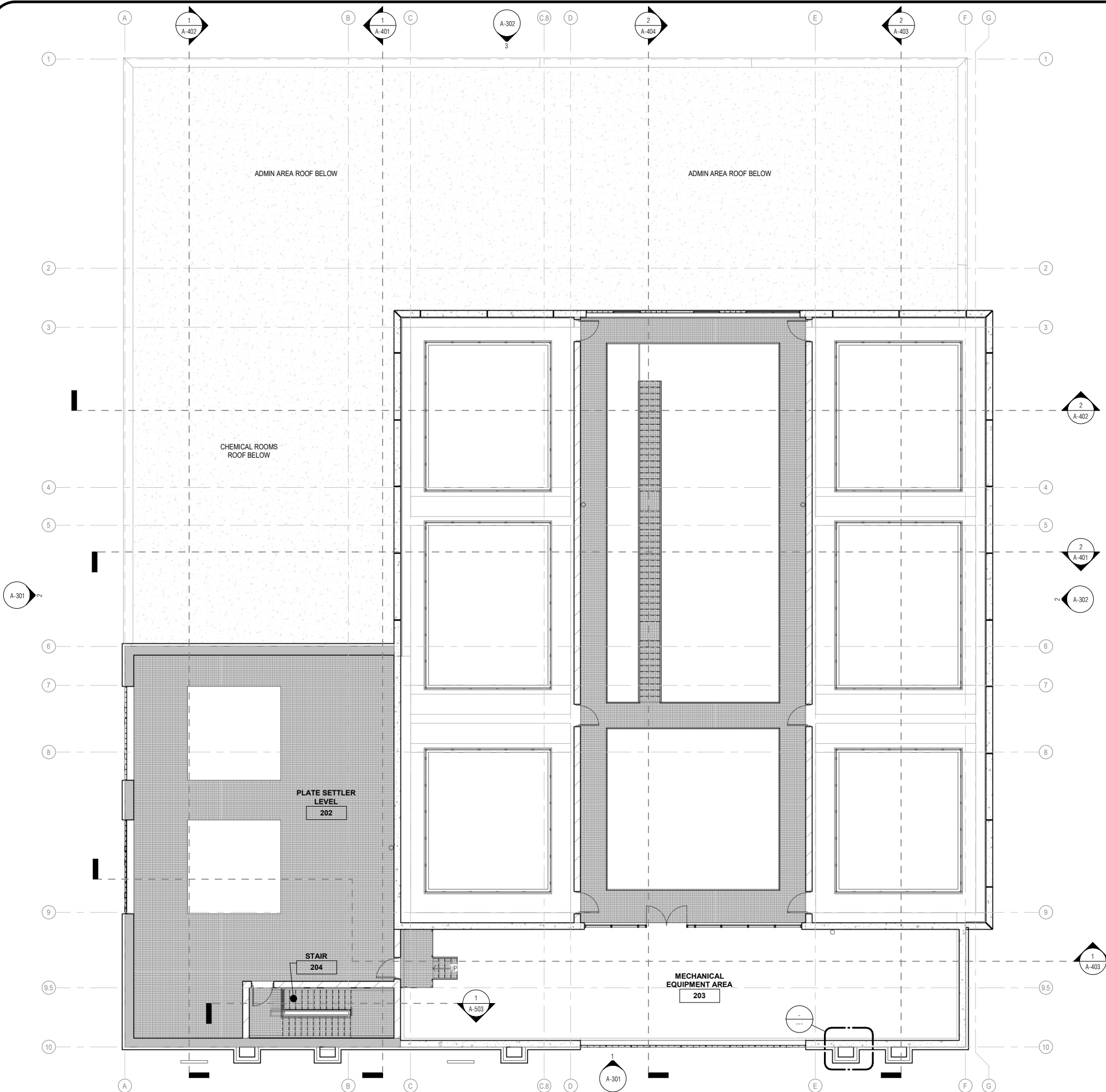
CHECKED / APPROVED
 ANC / JLO

DATE

PROJECT NUMBER

FACILITY

DRAWING
A-102



PLAN KEYNOTES:

- 01 ANODIZED ALUM. SHIPS LADDER WITH PIPE RAILING (PROVIDE DISSIMILAR MATERIAL SEPARATION BETWEEN ALUM. AND STEEL). ALL WELDS TO BE GROUND SMOOTH - SEE DETAIL ??? FOR MORE INFORMATION
- 02 BOLT-DOWN ANODIZED ALUM. PIPE GUARD RAILING (PROVIDE DISSIMILAR MATERIAL SEPARATION BETWEEN ALUM. AND STEEL). ALL WELDS TO BE GROUND SMOOTH - SEE DETAIL ??? FOR MORE INFORMATION
- 03 CAST-IN ALUM. FLOOR HATCH - SEE HATCH SCHEDULE FOR MORE INFORMATION
- 04 STEEL STAIR WITH FRP TREAD GRATING AND ANODIZED ALUM. PIPE GUARD AND HAND RAILING (PROVIDE DISSIMILAR MATERIAL SEPARATION BETWEEN ALUM. AND STEEL). ALL WELDS TO BE GROUND SMOOTH, PAINT ALL EXPOSED STEEL - SEE DETAIL ??? FOR MORE INFORMATION
- 05 BOLT-DOWN FRP PIPE GUARD RAILING - SEE DETAIL ??? FOR MORE INFORMATION
- 06 ANODIZED ALUM. ROOF ACCESS LADDER WITH PIPE RAILING (PROVIDE DISSIMILAR MATERIAL SEPARATION BETWEEN ALUM. AND STEEL). ALL WELDS TO BE GROUND SMOOTH - SEE DETAIL ??? FOR MORE INFORMATION
- 07 STRUCTURAL CONCRETE STOOP - SEE STRUCTURAL FOR MORE INFORMATION
- 08 INTEGRAL 2" WIDE WATER WICK AT PERIMETER OF TANK WALLS - SEE DETAIL ??? FOR MORE INFORMATION
- 09 CONCRETE FILLED 6" DIA. STEEL PIPE BOLLARD. PROVIDE PLASTIC BOLLARD COVERS AT EXTERIOR LOCATIONS - TYP.
- 10 PROVIDE CONCRETE HOUSE KEEPING PAD FOR ALL MECHANICAL EQUIPMENT - VERIFY ACTUAL SIZE IN FIELD
- 11 PROVIDE 3/4" PLYWOOD BACKER @ WALLS OF TECH. AND ELECTRICAL ROOM AS REQU. VERIFY LOCATION IN FIELD WITH VENDORS
- 12 RECYCLING SPACE IN ACCORDANCE WITH MN BUILDING CODE PROVISION 1303.1600
- 13 FIRE DEPARTMENT CONNECTION - SEE MECH. FOR MORE INFORMATION
- 14 (3) HEAVY DUTY PLYWOOD SHELVES WITH ADJUSTABLE TRACK SYSTEM - VERIFY EXTENTS IN FIELD
- 15 OVERHEAD CRANE - SEE STRUCTURAL FOR DETAILS/NOTES. STRUCTURAL CONNECTIONS BY CRANE PROVIDER. STRUCTURAL TO PROVIDE SUPERSTRUCTURE THAT CAN SUPPORT CRANE AND LOAD
- 16 PRE-FINISHED THROUGH WALL ROOF SCUPPER AND DOWNSPOUT
- 17 ROOF DRAIN - SEE DETAIL ??? FOR MORE INFORMATION
- 18 2x2' CONCRETE ROOF PAVER
- 19 SOLID SURFACE COUNTERTOP AND BACKSPLASH OVER CASEWORK WITH PLASTIC LAMINATE FINISH - SEE INTERIOR ELEVATIONS FOR LAYOUT AND ADDITIONAL INFORMATION
- 20 STAINLESS STEEL SINK - SEE MECH. FOR MORE INFORMATION
- 21 INTEGRAL SOLID SURFACE SAMPLE SINK. PROVIDE (6) WATER TAPS PLUS (1) SERVICE TAP - SEE MECH/DETAIL ??? FOR MORE INFORMATION
- 22 DUAL HEIGHT, ACCESSIBLE WATER COOLER AND JUG FILLER - SEE MECH. INSTALL PER MN STATE ACCESSIBILITY CODE, SECTION 1341
- 23 STAINLESS STEEL ADA GRAB BARS PER MN STATE ACCESSIBILITY CODE - SECTION 1341
- 24 WALL MOUNTED TOILET FIXTURE - SEE MECH. FOR MORE INFORMATION
- 25 WALL MOUNTED ALL-IN-ONE SINK - SEE MECH. FOR MORE INFORMATION
- 26 WALL MOUNTED 2x3' MIRROR WITH PRE-FINISHED ALUM. FRAME
- 27 SEMI-RECESSED TOILET ACCESSORIES PER MN STATE ACCESSIBILITY CODE - SECTION 1341
- 28 WALL MOUNTED URINAL FIXTURE - SEE MECH. FOR MORE INFORMATION
- 29 JANITOR MOP SINK. PROVIDE FRP WALL PANELS AT ADJACENT SIDES THAT ARE NOT BLOCK - SEE MECH. FOR MORE INFORMATION
- 30 WALL MOUNTED T.V. SCREENS BY OWNER
- 31 UNDER COUNTER MINI FRIDGE BY OWNER
- 32 EMERGENCY EYE WASH STATION - SEE MECH. FOR MORE INFORMATION
- 33 FLOOR DRAIN - SEE MECH. FOR MORE INFORMATION
- 34 WALL MOUNTED AND/OR RECESS FIRE EXTINGUISHER
- 35 NOT USED

FIRE RATED WALLS:

- 1HR RATED FIRE BARRIER/HORIZONTAL ASSEMBLY
- 2 HR RATED FIRE BARRIER/HORIZONTAL ASSEMBLY

ALL FIRE BARRIER WALLS TO BE MARKED AND IDENTIFIED PER SEC. 707.3. FIELD VERIFY WITH ARCHITECT/OWNER LOCATION AND COLOR

GENERAL NOTES:

PLAN NOTES ARE TYPICAL FOR ALL BUILDING PLANS. SOME NOTES MAY NOT BE LOCATED ON ONE PLAN VIEW, BUT ARE STILL APPLICABLE WITHIN THE PROJECT

FIRE BARRIERS PER MNBC SEC. 707 HORIZONTAL ASSEMBLIES PER MNBC SEC. 711

SEE SHEET ??? FOR TYPICAL PENETRATION DETAILS IN FIRE RATED ASSEMBLIES

ALL JOINTS (FLOOR, CEILING OR STRUCTURE, AND WALL TO STRUCTURE) SHALL BE SEALED TO MEET FIRE RATING REQUIREMENTS)

OA WALL SCHEDULE						
TYPE	GRAPHIC	CONSTRUCTION ASSEMBLY		TOTAL THICKNESS	FIRE RATING	NOTES
		SURFACE 1	CORE			
A		-	12" BLOCK	-	0 - 11 5/8"	SURFACE MOUNTED ELECTRICAL CONDUIT AND BOXES
B		-	8" BLOCK	-	0 - 7 5/8"	SURFACE MOUNTED ELECTRICAL CONDUIT AND BOXES
E		5/8" GYP BD	2" MTL FURRING	-	0 - 2 5/8"	
F		5/8" GYP BD	6" MTL STUD	5/8" GYP BD	0 - 7 1/4"	MOISTURE RESISTANT GYP BD AT ALL WET LOCATIONS
G		5/8" GYP BD	6" MTL STUD	-	0 - 6 5/8"	MOISTURE RESISTANT GYP BD AT ALL WET LOCATIONS

1 UPPER LEVEL

N
↑
ORTH

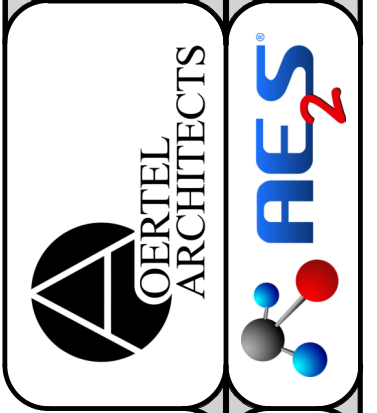
I HEREBY CERTIFY THAT THIS PLAN, SPECIFICATION, OR REPORT WAS PREPARED BY ME OR UNDER MY DIRECT SUPERVISION AND THAT I AM A DULY LICENSED ARCHITECT UNDER THE LAWS OF THE STATE OF MINNESOTA.

SIGNATURE: _____

TYPED NAME: THOMAS STROMSDOTT

FEBRUARY 9TH, 2021

REG. NO. 48038



PRELIMINARY
NOT FOR CONSTRUCTION
 PLANNING COMMISSION

RAMSEY WTP
 CITY OF RAMSEY
 RAMSEY, MN

UPPER LEVEL FLOOR PLAN

DRAWING TYPE
PRELIMINARY

PREPARED BY
 DCE

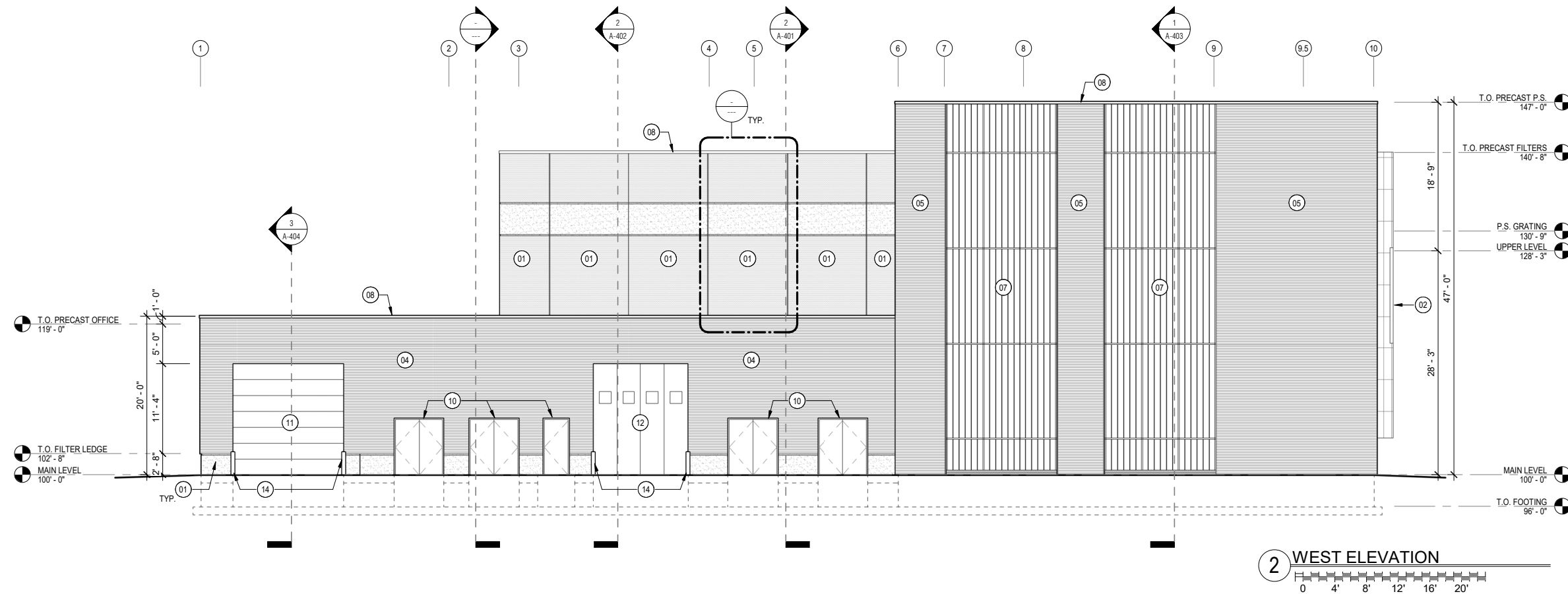
CHECKED / APPROVED
 ANC / JLO

DATE

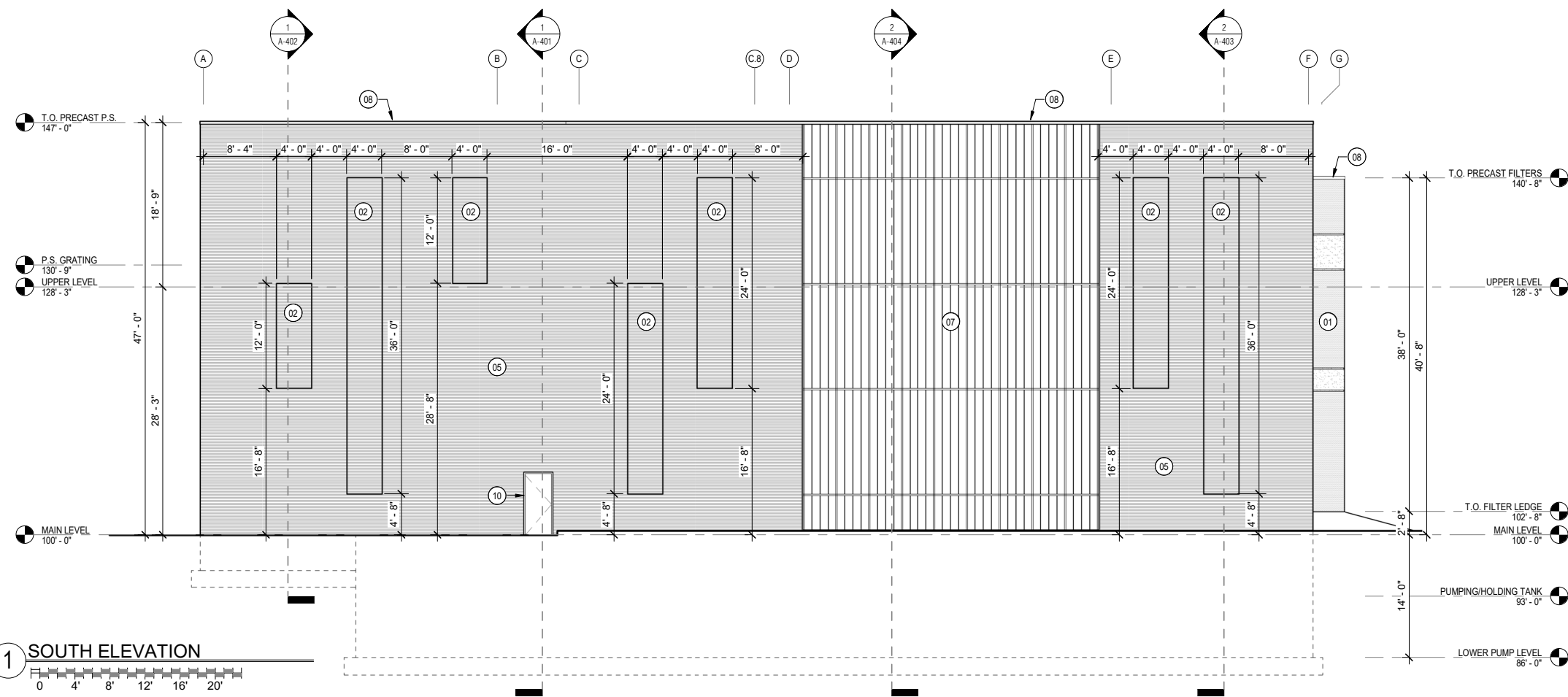
PROJECT NUMBER

FACILITY

DRAWING
A-103



2 WEST ELEVATION



1 SOUTH ELEVATION

- ELEVATION KEYNOTES:**
- 01 INSULATED ARCHITECTURAL PRECAST CONCRETE WALL PANELS - BUFF LIMESTONE INTEGRAL COLOR WITH ETCHED FINISH - 2" REVEAL PATTERN, SEE WALL PANEL DETAIL FOR MORE INFORMATION
 - 02 MTL. STUD FRAMED BUMP-OUTS WITH PRE-FINISHED UNSULATED RIBBED MTL. PANEL (MP-03) FINISH - SEE DETAIL ??? FOR MORE INFORMATION
 - 03 EXTERIOR PRE-FINISHED ALUM. STOREFRONT/ENTRY SYSTEM - SEE DOOR AND OR WINDOW SCHEDULE FOR MORE INFORMATION
 - 04 PRE-FINISHED RIBBED MTL. PANEL WITH CONCEALED FASTENERS (MP-02)
 - 05 PRE-FINISHED INSULATED RIBBED MTL. PANEL WITH CONCEALED FASTENERS (MP-03)
 - 06 PRE-FINISHED FLUSH FACE MTL. PANEL (MP-01)
 - 07 UNITIZED TRANSLUCENT WALL PANEL SYSTEM - SEE WINDOW SCHEDULE FOR MORE INFORMATION
 - 08 PRE-FINISHED MTL. PARAPET CAP
 - 09 EXTERIOR H.M. DOOR AND FRAME, PAINT - SEE DOOR SCHEDULE FOR MORE INFORMATION
 - 10 EXTERIOR PRE-FINISHED FRP DOOR AND FRAME - SEE DOOR SCHEDULE FOR MORE INFORMATION
 - 11 EXTERIOR PRE-FINISHED O.H. SECTIONAL DOOR - SEE DOOR SCHEDULE FOR MORE INFORMATION
 - 12 EXTERIOR PRE-FINISHED HEAVY DUTY FOLDING DOOR - SEE DOOR SCHEDULE FOR MORE INFORMATION
 - 13 PRE-FINISHED MTL. THRU-WALL SCUPPER AND/OR DOWNSPOUT
 - 14 CONCRETE FILLED 6" DIA. STEEL PIPE BOLLARD, PAINT - TYP.
 - 15 MTL. ROOF ACCESS LADDER WITH FALL ARRESTOR
 - 16 FIRE DEPARTMENT CONNECTION - SEE MECH. FOR MORE INFORMATION
 - 17 ROOF TOP UNIT - SEE MECH. FOR MORE INFORMATION
 - 18 LED WALL PACK LIGHTING - SEE ELECTRICAL FOR MORE INFORMATION
 - 19 12" TALL ANODIZED ALUM. BUILDING SIGNAGE
 - 20 PRE-FINISHED MTL. LOUVER - SEE MECH. FOR MORE INFORMATION
 - 21 PRE-FINISHED THRU-WALL OVERFLOW SCUPPER
- FOR WINDOW AND GLAZING TYPES SEE A600 FOR MORE INFORMATION

HEREBY CERTIFY THAT THIS PLAN, SPECIFICATION, OR REPORT WAS PREPARED BY ME OR UNDER MY DIRECT SUPERVISION AND THAT I AM A DULY LICENSED ARCHITECT UNDER THE LAWS OF THE STATE OF MINNESOTA.

SIGNATURE: _____

TYPED NAME: THOMAS STROMSDOTT
 FEBRUARY 9TH, 2021 REG. NO. 48038

PRELIMINARY
NOT FOR CONSTRUCTION
 PLANNING COMMISSION

OERTEL ARCHITECTS

AES

RAMSEY WTP
 CITY OF RAMSEY
 RAMSEY, MN

BUILDING ELEVATIONS

DRAWING TYPE
PRELIMINARY

PREPARED BY
 DCE

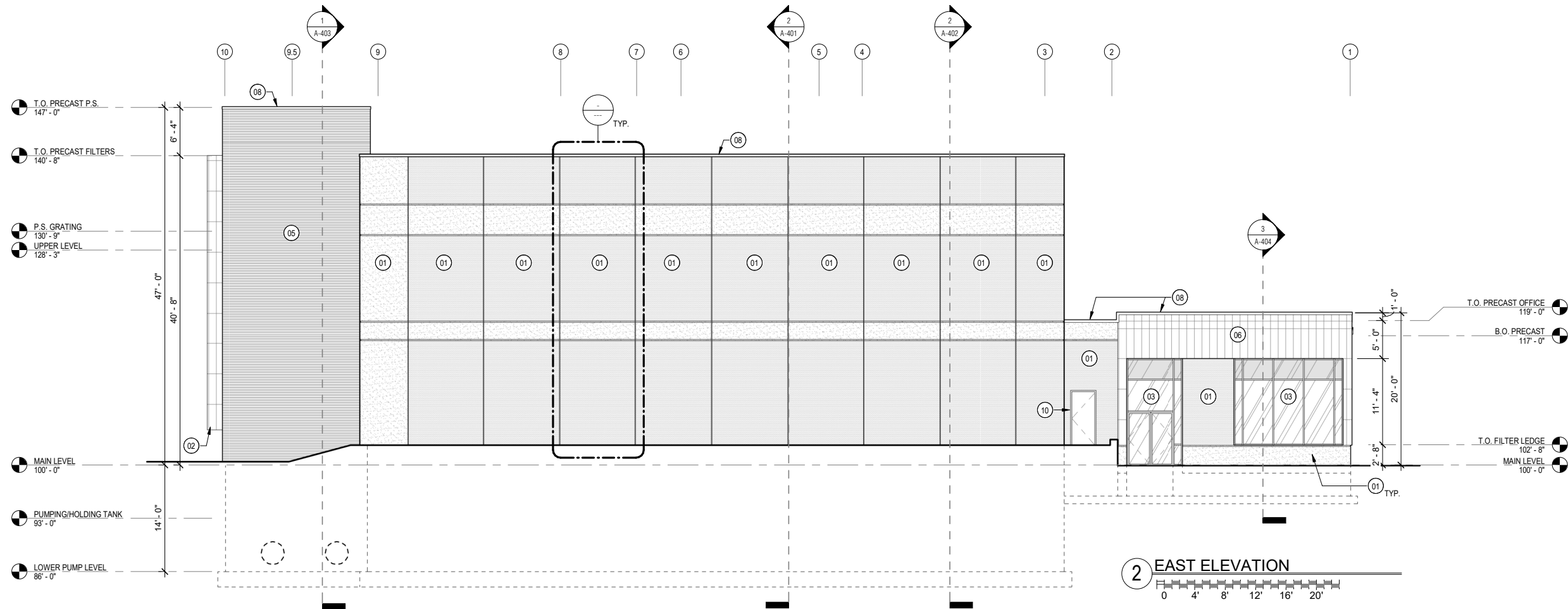
CHECKED / APPROVED
 ANC / JLO

DATE

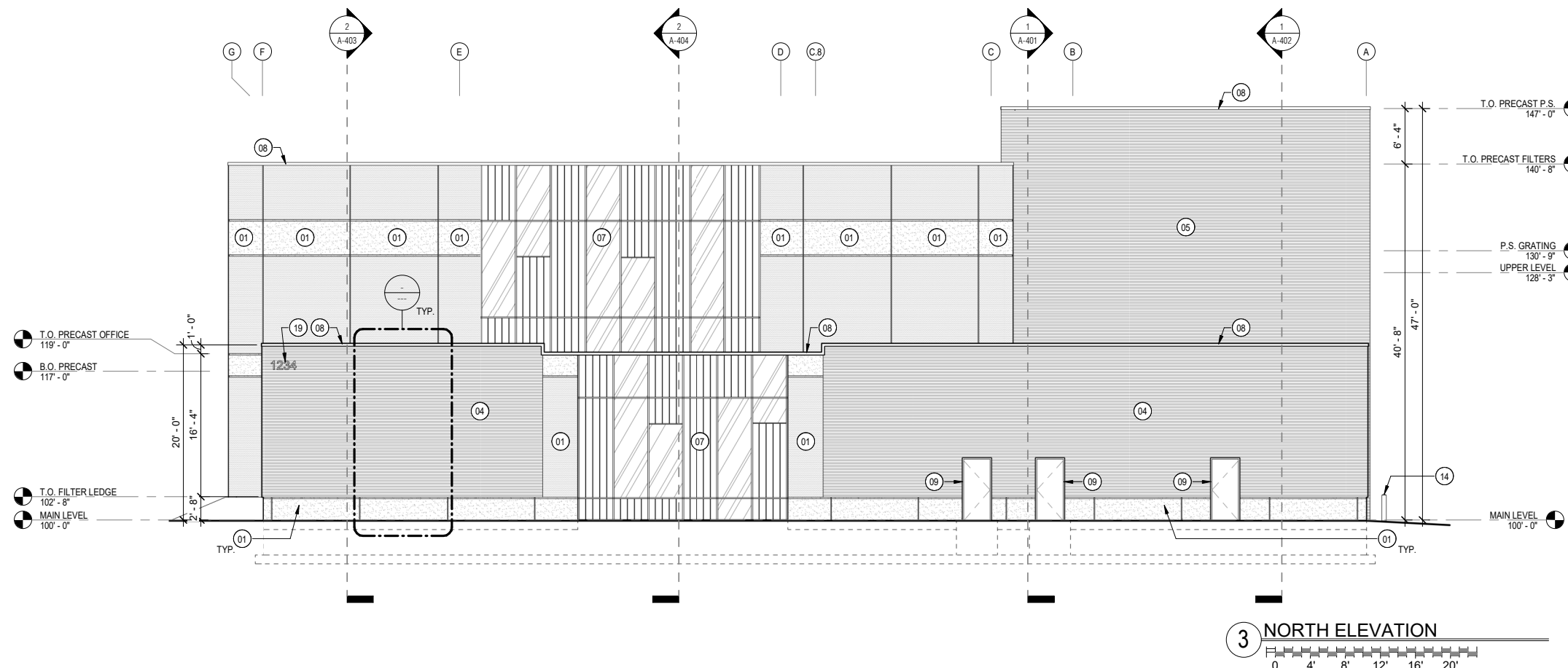
PROJECT NUMBER

FACILITY

DRAWING
A-301



2 EAST ELEVATION



3 NORTH ELEVATION

ELEVATION KEYNOTES:

- 01 INSULATED ARCHITECTURAL PRECAST CONCRETE WALL PANELS - BUFF LIMESTONE INTEGRAL COLOR WITH ETCHED FINISH - 2" REVEAL PATTERN. SEE WALL PANEL DETAIL FOR MORE INFORMATION
- 02 MTL. STUD FRAMED BUMP-OUTS WITH PRE-FINISHED UNSULATED RIBBED MTL. PANEL (MP-03) FINISH - SEE DETAIL ??? FOR MORE INFORMATION
- 03 EXTERIOR PRE-FINISHED ALUM. STOREFRONT ENTRY SYSTEM - SEE DOOR AND OR WINDOW SCHEDULE FOR MORE INFORMATION
- 04 PRE-FINISHED RIBBED MTL. PANEL WITH CONCEALED FASTENERS (MP-02)
- 05 PRE-FINISHED INSULATED RIBBED MTL. PANEL WITH CONCEALED FASTENERS (MP-03)
- 06 PRE-FINISHED FLUSH FACE MTL. PANEL (MP-01)
- 07 UNITIZED TRANSLUCENT WALL PANEL SYSTEM - SEE WINDOW SCHEDULE FOR MORE INFORMATION
- 08 PRE-FINISHED MTL. PARAPET CAP
- 09 EXTERIOR H.M. DOOR AND FRAME, PAINT - SEE DOOR SCHEDULE FOR MORE INFORMATION
- 10 EXTERIOR PRE-FINISHED FRP DOOR AND FRAME - SEE DOOR SCHEDULE FOR MORE INFORMATION
- 11 EXTERIOR PRE-FINISHED O.H. SECTIONAL DOOR - SEE DOOR SCHEDULE FOR MORE INFORMATION
- 12 EXTERIOR PRE-FINISHED HEAVY DUTY FOLDING DOOR - SEE DOOR SCHEDULE FOR MORE INFORMATION
- 13 PRE-FINISHED MTL. THRU-WALL SCUPPER AND/OR DOWNSPOUT
- 14 CONCRETE FILLED 6" DIA. STEEL PIPE BOLLARD, PAINT - TYP.
- 15 MTL. ROOF ACCESS LADDER WITH FALL ARRESTOR
- 16 FIRE DEPARTMENT CONNECTION - SEE MECH. FOR MORE INFORMATION
- 17 ROOF TOP UNIT - SEE MECH. FOR MORE INFORMATION
- 18 LED WALL PACK LIGHTING - SEE ELECTRICAL FOR MORE INFORMATION
- 19 12" TALL ANODIZED ALUM. BUILDING SIGNAGE
- 20 PRE-FINISHED MTL. LOUVER - SEE MECH. FOR MORE INFORMATION
- 21 PRE-FINISHED THRU-WALL OVERFLOW SCUPPER

FOR WINDOW AND GLAZING TYPES SEE A600 FOR MORE INFORMATION




I HEREBY CERTIFY THAT THIS PLAN, SPECIFICATION, OR REPORT WAS PREPARED BY ME OR UNDER MY DIRECT SUPERVISION AND THAT I AM A DULY LICENSED ARCHITECT UNDER THE LAWS OF THE STATE OF MINNESOTA.
 SIGNATURE: _____
 TYPED NAME: THOMAS STROMSDOTT
 FEBRUARY 9TH, 2021 REG. NO. 48038

PRELIMINARY
NOT FOR CONSTRUCTION
 PLANNING COMMISSION

RAMSEY WTP
 CITY OF RAMSEY
 RAMSEY, MN
 BUILDING ELEVATIONS

DRAWING TYPE
PRELIMINARY
 PREPARED BY
 DCE
 CHECKED / APPROVED
 ANC / JLO
 DATE
 PROJECT NUMBER
 FACILITY
 DRAWING
A-302