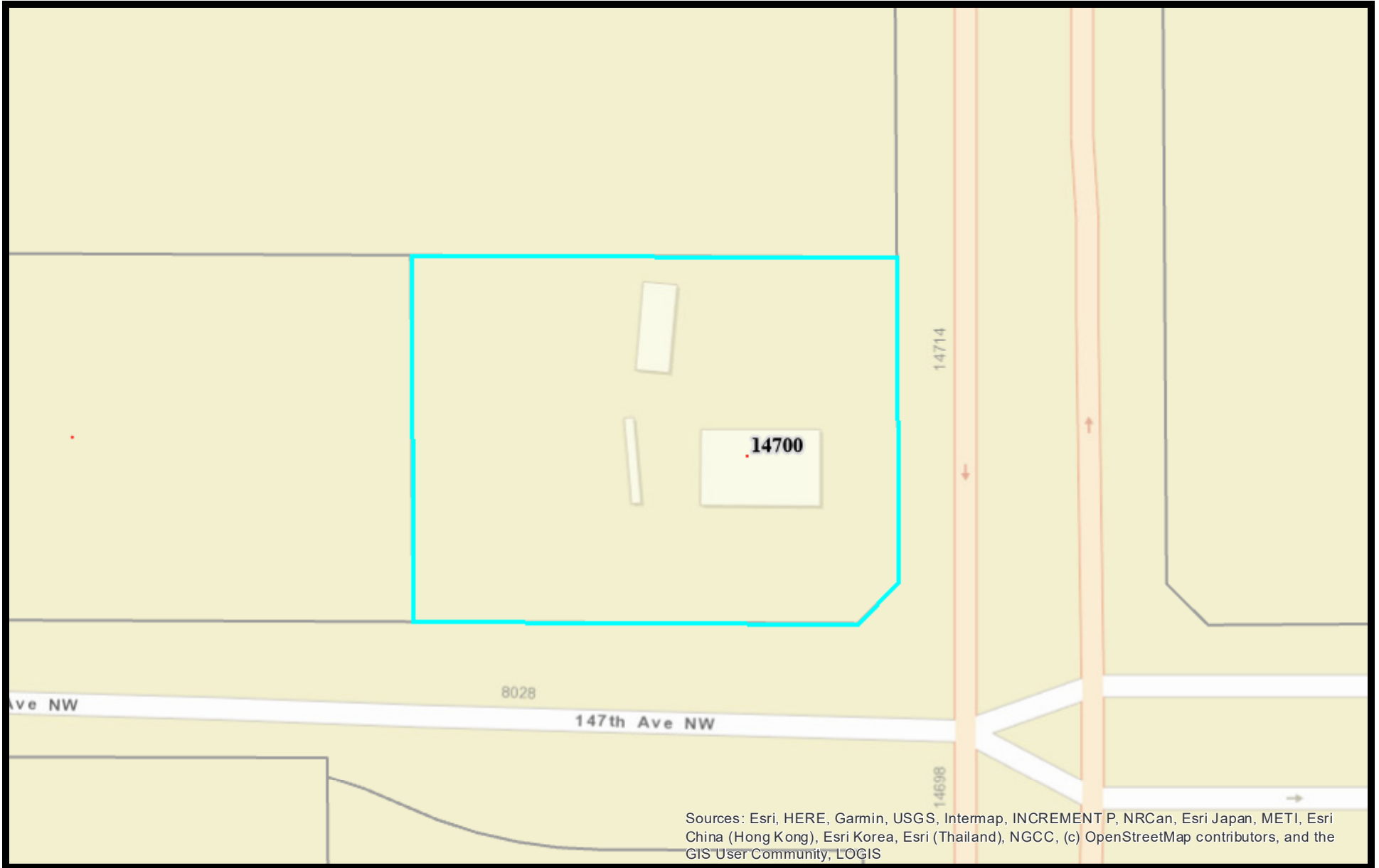
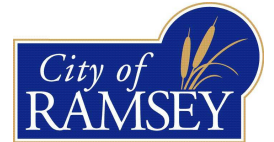


29-32-25-11-0008

14700 Armstrong Blvd NW

# Site Location Map

Interim Use Permit



Sources: Esri, HERE, Garmin, USGS, Intermap, INCREMENT P, NRCan, Esri Japan, METI, Esri China (Hong Kong), Esri Korea, Esri (Thailand), NGCC, (c) OpenStreetMap contributors, and the GIS User Community, LOGIS

07/01/2022

00.0045009 0.018 0.027 0.036  
mi