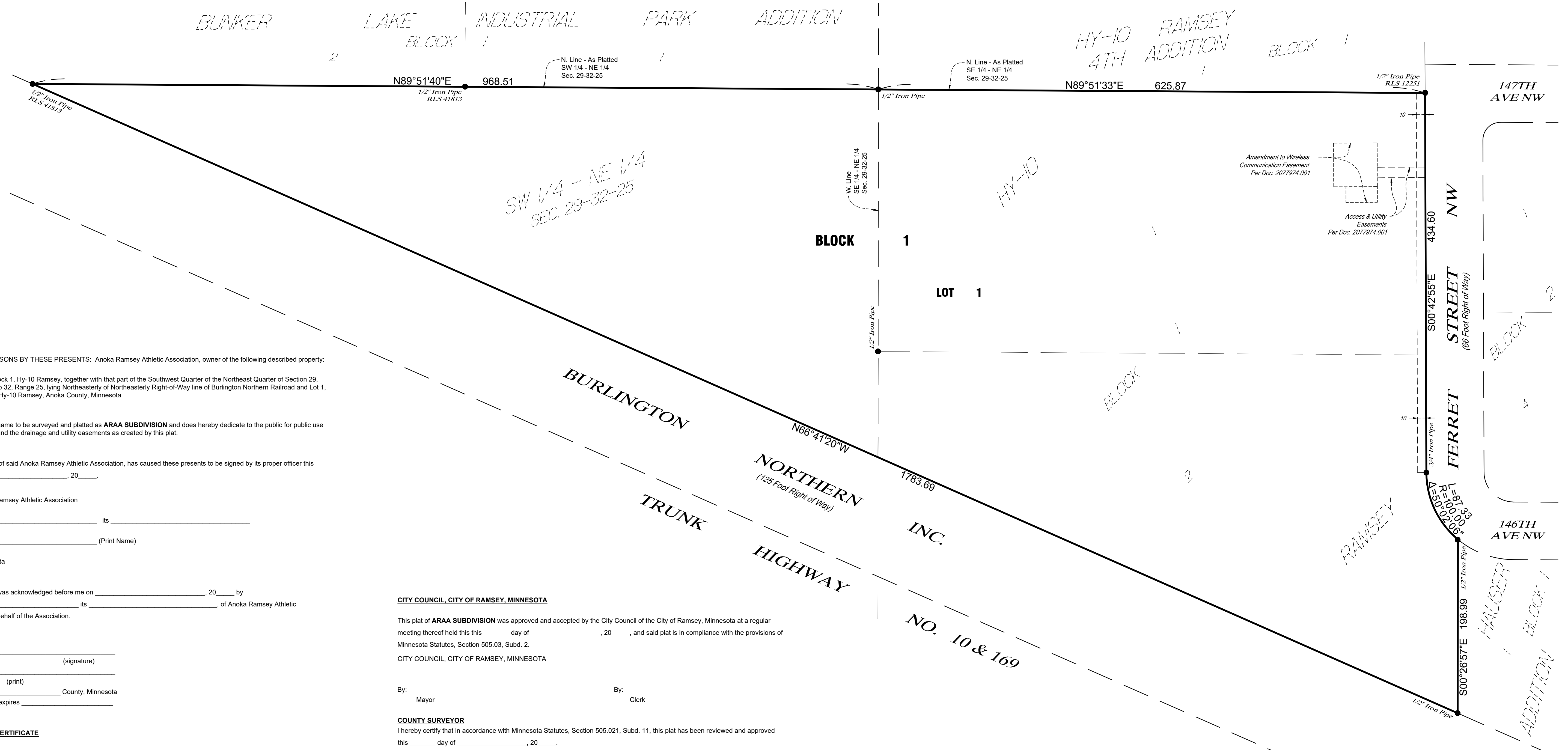


# ARAA SUBDIVISION

City of Ramsey  
County of Anoka  
Section 29, Township 32, Range 25



KNOW ALL PERSONS BY THESE PRESENTS: Anoka Ramsey Athletic Association, owner of the following described property:

Lot 2, Block 1, Hy-10 Ramsey, together with that part of the Southwest Quarter of the Northeast Quarter of Section 29, Township 32, Range 25, lying Northeastly of Northeastly Right-of-Way line of Burlington Northern Railroad and Lot 1, Block 1, Hy-10 Ramsey, Anoka County, Minnesota

Has caused the same to be surveyed and platted as **ARAA SUBDIVISION** and does hereby dedicate to the public for public use the public ways and the drainage and utility easements as created by this plat.

In witness whereof said Anoka Ramsey Athletic Association, has caused these presents to be signed by its proper officer this \_\_\_\_\_ day of \_\_\_\_\_, 20\_\_\_\_.

Signed: Anoka Ramsey Athletic Association

\_\_\_\_\_, its \_\_\_\_\_  
(Print Name)

State of Minnesota  
County of \_\_\_\_\_

This instrument was acknowledged before me on \_\_\_\_\_, 20\_\_\_\_ by \_\_\_\_\_ its \_\_\_\_\_ of Anoka Ramsey Athletic Association, on behalf of the Association.

\_\_\_\_\_  
(signature)  
\_\_\_\_\_  
(print)

Notary Public \_\_\_\_\_ County, Minnesota  
My Commission expires \_\_\_\_\_

### SURVEYOR'S CERTIFICATE

I Daniel L. Stueber do hereby certify that this plat was prepared by me or under my direct supervision; that I am a duly Licensed Land Surveyor in the State of Minnesota; that this plat is a correct representation of the boundary survey; that all mathematical data and labels are correctly designated on this plat; that all monuments depicted on this plat have been, or will be correctly set within one year; that all water boundaries and wet lands, as defined in Minnesota Statutes, Section 505.01, Subd. 3, as of the date of this certificate are shown and labeled on this plat; and all public ways are shown and labeled on this plat.

Dated this \_\_\_\_\_ day of \_\_\_\_\_, 20\_\_\_\_.

Daniel L. Stueber, Licensed Land Surveyor  
Minnesota License No. 43110

State of Minnesota  
County of Blue Earth

This instrument was acknowledged before me on \_\_\_\_\_, 20\_\_\_\_ by Daniel L. Stueber.

\_\_\_\_\_  
(signature)  
Kent A. Hays  
Notary Public, Blue Earth County, Minnesota  
My Commission expires Jan. 31, 2025

### CITY COUNCIL, CITY OF RAMSEY, MINNESOTA

This plat of **ARAA SUBDIVISION** was approved and accepted by the City Council of the City of Ramsey, Minnesota at a regular meeting thereof held this \_\_\_\_\_ day of \_\_\_\_\_, 20\_\_\_\_, and said plat is in compliance with the provisions of Minnesota Statutes, Section 505.03, Subd. 2.

### CITY COUNCIL, CITY OF RAMSEY, MINNESOTA

By: \_\_\_\_\_ Mayor  
By: \_\_\_\_\_ Clerk

### COUNTY SURVEYOR

I hereby certify that in accordance with Minnesota Statutes, Section 505.021, Subd. 11, this plat has been reviewed and approved this \_\_\_\_\_ day of \_\_\_\_\_, 20\_\_\_\_.

By: \_\_\_\_\_  
Charles F. Gitzen  
Anoka County Surveyor

### COUNTY AUDITOR/TREASURER

Pursuant to Minnesota Statutes, Section 505.021, Subd. 9, taxes payable in the year 20\_\_\_\_ on the land hereinbefore described have been paid. Also, pursuant to Minnesota Statutes, Section 272.12, there are no delinquent taxes and transfer entered this \_\_\_\_\_ day of \_\_\_\_\_, 20\_\_\_\_.

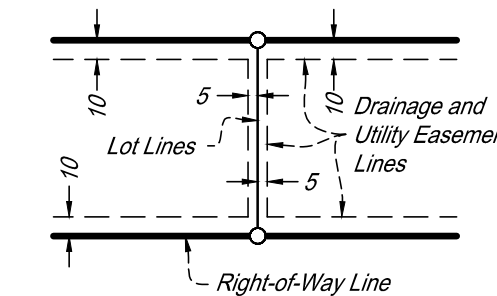
Property Tax Administrator  
By: \_\_\_\_\_ Deputy

### COUNTY RECORDER/REGISTRAR OF TITLES COUNTY OF ANOKA, STATE OF MINNESOTA

I hereby certify that this plat of **ARAA SUBDIVISION** was filed in the office of the County Recorder/Registrar of Titles for public record on this \_\_\_\_\_ day of \_\_\_\_\_, 20\_\_\_\_, at \_\_\_\_\_ o'clock \_\_\_\_\_ M. and was duly recorded as Document Number \_\_\_\_\_.

County Recorder/Registrar of Titles  
By: \_\_\_\_\_ Deputy

Drainage and Utility Easements are shown thus:

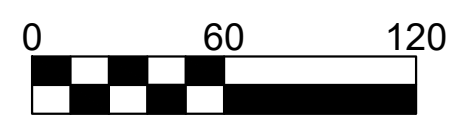


Being 5 feet in width and adjoining lot lines and being 10 feet in width and adjoining right - of - way lines and rear lot lines, unless otherwise indicated on the plat.

**BEARING NOTE:**  
For the purposes of this plat, the orientation of this bearing system is based on the plat of Hy-10 Ramsey.

### LEGEND

● Found Iron Monument



SCALE IN FEET  
1 INCH = 60 FEET

**DRAFT**

**OWNER/DEVELOPER:**  
Anoka Ramsey Athletic Association  
PO Box 265  
Anoka, MN 55303

**SURVEYOR:**  
ISG  
115 E. Hickory Street Suite 300  
Mankato, MN 56001  
(507)-387-6651

**ISG**