

RIVERSTONE SOUTH THIRD ADDITION

CITY OF RAMSEY
COUNTY OF ANOKA
SECS. 29 & 30, TWP. 32, RGE. 25

KNOW ALL PERSONS BY THESE PRESENTS: That Riverstone Development, LLC, a Minnesota limited liability company, owner of the following described property:

Outlot M, RIVERSTONE SOUTH, Anoka County, Minnesota

Has caused the same to be surveyed and platted as RIVERSTONE SOUTH THIRD ADDITION and does hereby dedicate to the public for public use the public ways and the drainage and utility easements as shown on this plat. In witness whereof said Riverstone Development, LLC, a Minnesota limited liability company, has caused these presents to be signed by its proper partner this ____ day of _____, 20 ____.

RIVERSTONE DEVELOPMENT, LLC

Stephen A. Bona, Vice President of Land

STATE OF _____
COUNTY OF _____

This instrument was acknowledged before me on _____ by Stephen A. Bona, Vice President of Land of Riverstone Development, LLC, a Minnesota limited liability company.

(Signed)

(Printed)
Notary Public, _____
My commission expires _____

I, Thomas R. Balluff, do hereby certify that this plat was prepared by me or under my direct supervision; that I am a duly Licensed Land Surveyor in the State of Minnesota; that this plat is a correct representation of the boundary survey; that all mathematical data and labels are correctly designated on this plat; that all monuments depicted on this plat have been, or will be correctly set within one year; that all water boundaries and wet lands, as defined in Minnesota Statutes, Section 505.01, Subd. 3, as of the date of this certificate are shown and labeled on this plat; and all public ways are shown and labeled on this plat.

Dated this ____ day of _____, 20 ____.

Thomas R. Balluff, Licensed Land Surveyor
Minnesota License No. 40361

STATE OF _____
COUNTY OF _____

This instrument was acknowledged before me on _____ by Thomas R. Balluff.

(Signed)

(Printed)
Notary Public, _____
My commission expires _____

CITY COUNCIL, CITY OF RAMSEY, MINNESOTA

This plat of RIVERSTONE SOUTH THIRD ADDITION was approved and accepted by the City Council of the City of Ramsey, Minnesota at a regular meeting thereof held this ____ day of _____, 20____, and said plat is in compliance with the provisions of Minnesota Statutes, Section 505.03, Subd. 2.

CITY COUNCIL, CITY OF RAMSEY, MINNESOTA

By: _____, Mayor
By: _____, Clerk

COUNTY SURVEYOR

I hereby certify that in accordance with Minnesota Statutes, Section 505.03, Subd. 11, this plat has been reviewed and approved this ____ day of _____, 20 ____.

David M. Ziegler
Anoka County Surveyor
By: _____, Deputy

COUNTY AUDITOR/TREASURER

Pursuant to Minnesota Statutes, Section 505.021, Subd. 9, taxes payable in the year 20____, on the land hereinbefore described have been paid. Also, pursuant to Minnesota Statutes, Section 272.12, there are no delinquent taxes and transfer entered this ____ day of _____, 20 ____.

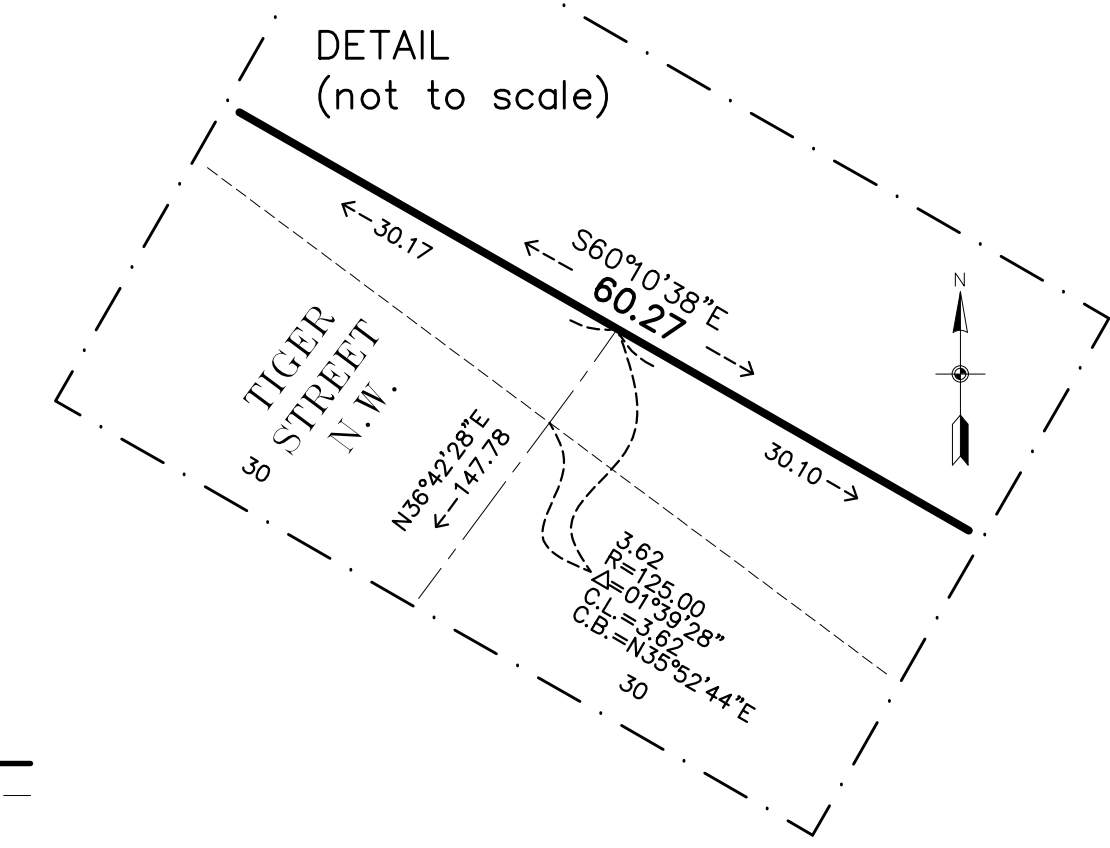
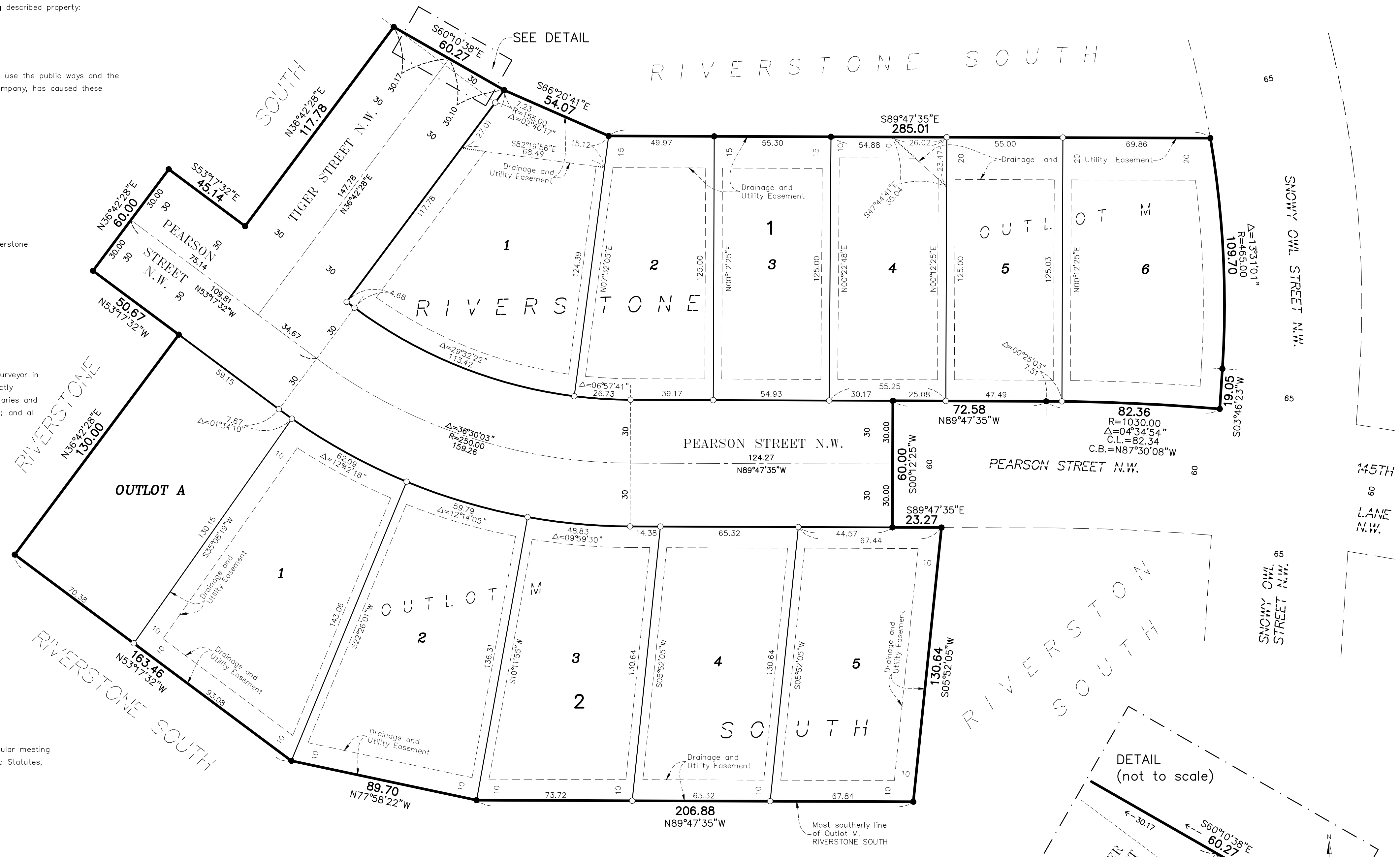
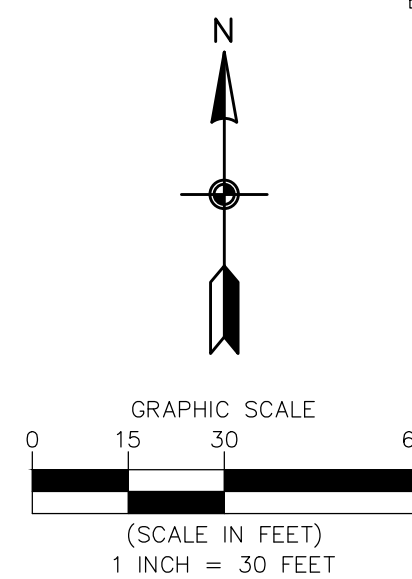
Property Tax Administrator
By: _____, Deputy

COUNTY RECORDER/REGISTRAR OF TITLES

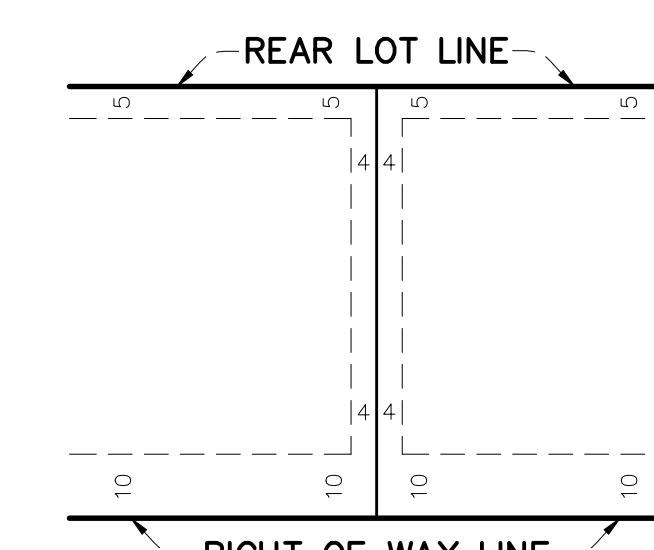
County of Anoka, State of Minnesota

I hereby certify that this plat of RIVERSTONE SOUTH THIRD ADDITION was filed in the office of the County Recorder/Registrar of Titles for public record on this ____ day of _____, 20____, at ____ o'clock ____M, and was duly recorded as Document Number _____.

County Recorder/Registrar of Title
By: _____, Deputy



DRAINAGE AND UTILITY EASEMENTS ARE SHOWN THUS:



being 4 feet in width and adjoining side lot lines, and 10 feet in width and adjoining right of way lines, and 5 feet in width and adjoining rear lot lines unless otherwise shown on this plat.

- Denotes 5/8 inch by 14 inch Rebar, set or to be set within one year of recording of this plat and marked with license number 40361
- Denotes Found Iron Monument marked with RLS 40361