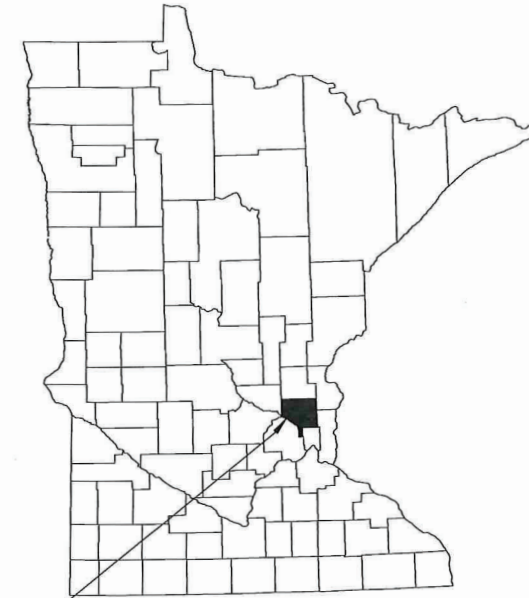
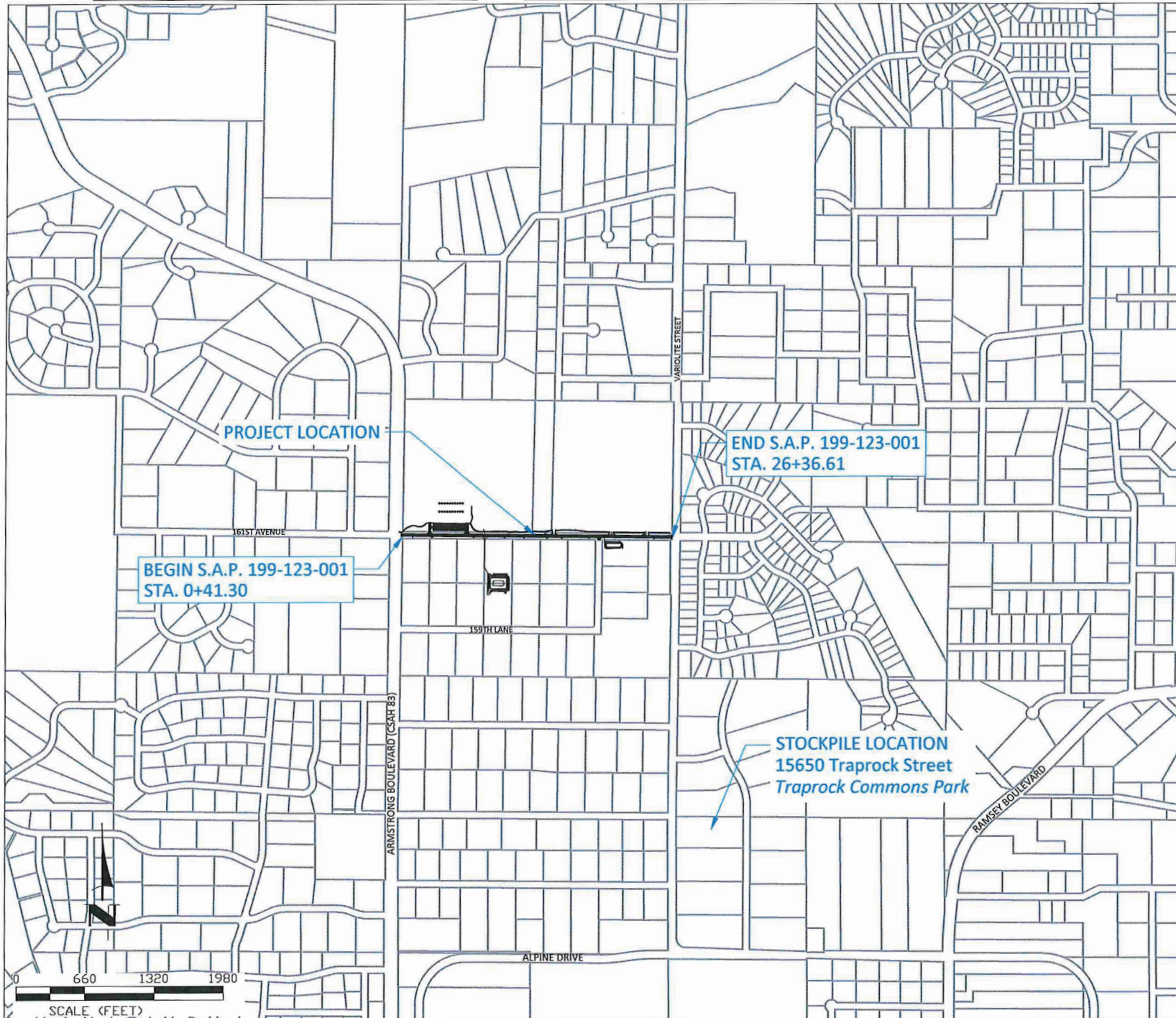


CITY OF RAMSEY

STREET CONSTRUCTION PLANS FOR STREET RECONSTRUCTION, UTILITY CONSTRUCTION, GRADING. S.A.P. 199-123-001

S.A.P. LOCATED ON 161ST AVENUE BETWEEN ARMSTRONG BOULEVARD (CSAH 5) AND VARIOLITE STREET
FROM SW 1/4 OF THE NW 1/4 OF S16, T32, R25 TO SE 1/4 OF THE NW 1/4 OF S16, T32, R25



CITY OF RAMSEY
ANOKA COUNTY, MINNESOTA
DISTRICT: METRO

THE SUBSURFACE UTILITY INFORMATION IN THIS PLAN IS UTILITY QUALITY LEVEL D. THIS QUALITY LEVEL WAS DETERMINED ACCORDING TO THE GUIDELINES OF CI/ASCE 38-02, ENTITLED "STANDARD GUIDELINES FOR THE COLLECTION AND DEPICTION OF EXISTING SUBSURFACE UTILITY DATA."

NOTE: EXISTING UTILITY INFORMATION SHOWN ON THIS PLAN HAS BEEN PROVIDED BY THE UTILITY OWNER. THE CONTRACTOR SHALL FIELD VERIFY EXACT LOCATIONS PRIOR TO COMMENCING CONSTRUCTION AS REQUIRED BY STATE LAW. NOTIFY GOPHER STATE ONE CALL 1-800-252-1166 OR 651-454-0002



GOVERNING SPECIFICATIONS

THE 2020 EDITION OF THE MINNESOTA DEPARTMENT OF TRANSPORTATION "STANDARD SPECIFICATIONS FOR CONSTRUCTION" AND THE "SUPPLEMENTAL SPECIFICATIONS" DATED SEPTEMBER 2022 SHALL GOVERN.

THE 2018 EDITION OF THE CITY ENGINEERS ASSOCIATE OF MINNESOTA "STANDARD SPECIFICATIONS" SHALL GOVERN FOR UTILITY INSTALLATIONS.

ALL FEDERAL, STATE AND LOCAL LAWS, REGULATIONS AND ORDINANCES SHALL BE COMPLIED WITH IN THE CONSTRUCTION OF THIS PROJECT.

ALL TRAFFIC CONTROL DEVICES AND SIGNING SHALL CONFORM TO THE MINNESOTA MANUAL ON UNIFORM TRAFFIC CONTROL DEVICES, INCLUDING THE FIELD MANUAL FOR TEMPORARY TRAFFIC CONTROL ZONE LAYOUTS.

SHEET INDEX

THIS PLAN CONTAINS 56 SHEETS

SHEET NO.	DESCRIPTION
01	TITLE SHEET
02	STATEMENT OF ESTIMATED QUANTITIES
03-04	TABULATIONS
05	ALIGNMENT LAYOUT
06	SHEET INDEX
08-09	CITY DETAILS
10-15	MNDOT PEDESTRIAN RAMP DETAILS
16	INTERSECTION DETAILS
17-18	SWPPP
19-24	GRADING & EROSION CONTROL
25-29	EXISTING CONDITIONS & REMOVALS
30-33	STREET & STORM SEWER
34-35	STORM SEWER LEADS
36-37	SANITARY SEWER & WATERMAIN
38-42	RESTORATION
45-56	CROSS SECTIONS

LEGEND

	SANITARY MANHOLE		EASEMENT - DRAINAGE & UTILITY
	STORM SEWER MANHOLE		SECTION LINE
	CATCH BASIN MANHOLE		LOT LINE
	CATCH BASIN		ELECTRIC LINE
	CULVERT END SECTION		ELECTRIC LINE - BURIED
	HYDRANT		ELECTRIC LINE - OVERHEAD
	VALVE		GAS LINE
	TREE - CONIFEROUS		TELECOMMUNICATION LINE
	TREE - DECIDUOUS		FIBER OPTIC LINE
	SHRUB		TREE LINE
	LIGHT POLE		LANDSCAPE
	SIGN		RETAINING WALL
	MAILBOX		TREE SAVE FENCE
	PEDESTAL - TELECOM		SILT FENCE
	PEDESTAL - ELECTRIC		WATERMAIN
	HAND HOLE		SANITARY SEWER
	DRIVE - BITUMINOUS		STORM SEWER
	DRIVE - CONCRETE		DRAIN TILE
	DRIVE - GRAVEL		LANDSCAPE - ROCK
	CONCRETE WALK		LANDSCAPE - MULCH
	BITUMINOUS TRAIL		LANDSCAPE - RIP RAP
	REMOVE BIT PAVE		PR. DRIVE - BITUMINOUS
	REMOVE CONCRETE PAVE		PR. DRIVE - CONCRETE
	REMOVE GRAVEL SURFACE		PR. DRIVE - GRAVEL
	MILL BIT PAVEMENT		PR. CONCRETE WALK
	RECLAIM BIT PAVEMENT		PR. CONCRETE
			PR. SEEDING AREA

I hereby certify that this plan, specification, or report was prepared by me or under my direct supervision and that I am a duly Licensed Professional Engineer under the laws of the State of Minnesota.

JOE FERIANECK, P.E. 57095 DATE 3/01/23
LIC. NO.

APPROVED: DATE 3/1/23
CITY ENGINEER, CITY OF RAMSEY

Dan Erickson Digitally signed by Dan Erickson Date: 2023.03.28 13:34:34 -05'00' DATE

DISTRICT STATE AID ENGINEER: REVIEWED FOR COMPLIANCE WITH STATE AID RULES/POLICY

for Dan Erickson Digitally signed by Dan Erickson Date: 2023.03.28 13:35:02 -05'00' DATE
STATE AID ENGINEER: APPROVED FOR STATE AID FUNDING

PROJECT	STA. TO STA.	GROSS LENGTH	BRIDGE LENGTH	NET LENGTH	NET LENGTH (MILES)	ADT (2023)	ADT (2043)	DESIGN ESAL	R VALUE	TON DESIGN	DESIGN SPEED	DESIGN SPEED NOT MET	NUMBER OF LANES	WIDTH OF LANES	NUMBER OF SHOULDERS	WIDTH OF LANES	FUNCTIONAL CLASSIFICATION
S.A.P. 199-123-001 161ST AVENUE	0+41.30 TO 26+36.61	2595 FT	0 FT	2595 FT	0.49 MI	1,050	2,400	193,000	50	10	30 MPH	STA. 0+41.30 STA. 26+36.61 STOP CONDITION	2	12'	N/A	N/A	COLLECTOR
TRAIL 161ST AVENUE TRAIL	0+00 TO 26+60.65 NORTH SIDE	2661	0 FT	2661 FT	0.50 MI	N/A	N/A	N/A	50	N/A	20 MPH	STA. 0+00,3+00,7+00 STOPS CONDITIONS PED CROSSING	1	8' - 10'	N/A	N/A	TRAIL

CITY OF RAMSEY
7550 SUNWOOD DRIVE
RAMSEY, MN 55303
(763) 427-1410 FAX (763) 433-9898

ROADWAY STOPPING SIGHT DISTANCE BASED ON:
3.5 FT - HEIGHT OF EYE
2.0 FT - HEIGHT OF OBJECT
TRAIL STOPPING SIGHT DISTANCE BASED ON:
4.5 FT - HEIGHT OF EYE
0.0 FT - HEIGHT OF OBJECT

DATUM:
VERTICAL: NAVD 88
HORIZONTAL: ANOKA COUNTY COORDINATES (1996 ADJUSTMENT)

DATE	REVISION
3/16/23	UPDATE STORM SEWER SYSTEM
3/24/23	UPDATE TRAIL ALIGNMENT

SAP 199-123-001