

CITY OF RAMSEY

NEIGHBORHOOD OVERLAY IMPROVEMENTS

CITY IMPROVEMENT PROJECT NO. 23-07

GOVERNING SPECIFICATIONS

THE 2020 EDITION OF THE MINNESOTA DEPARTMENT OF TRANSPORTATION "STANDARD SPECIFICATIONS FOR CONSTRUCTION" AND THE "SUPPLEMENTAL SPECIFICATIONS" DATED SEPTEMBER 2022 SHALL GOVERN.

ALL FEDERAL, STATE AND LOCAL LAWS, REGULATIONS AND ORDINANCES SHALL BE COMPLIED WITH IN THE CONSTRUCTION OF THIS PROJECT.

ALL TRAFFIC CONTROL DEVICES AND SIGNING SHALL CONFORM TO THE MINNESOTA MANUAL ON UNIFORM TRAFFIC CONTROL DEVICES, INCLUDING THE FIELD MANUAL FOR TEMPORARY TRAFFIC CONTROL ZONE LAYOUTS.

SHEET INDEX

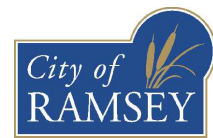
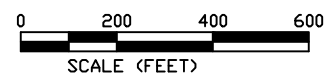
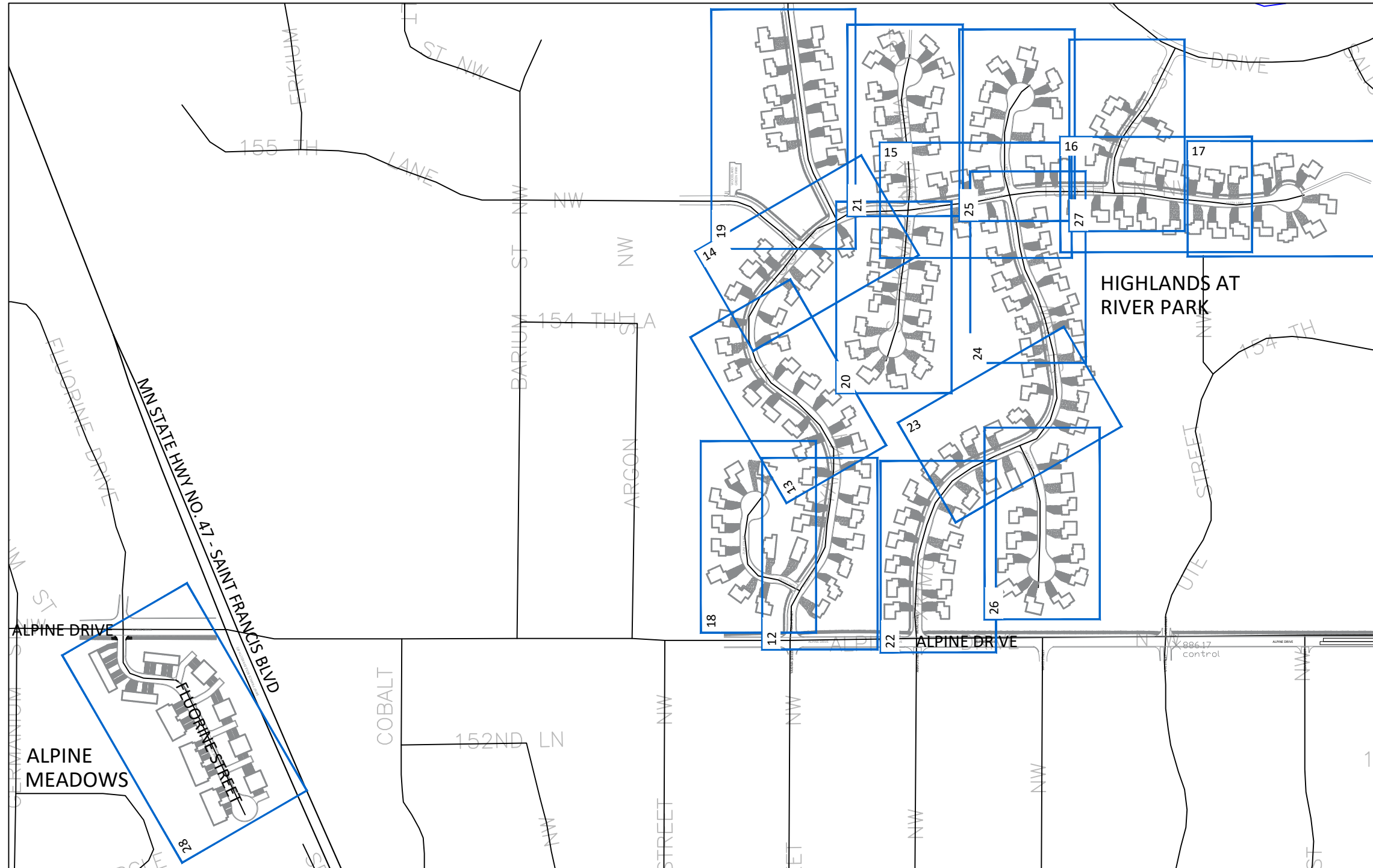
THIS PLAN CONTAINS 29 SHEETS

SHEET No.	DESCRIPTION
-----------	-------------

1	TITLE SHEET
2	STATEMENT OF ESTIMATED QUANTITIES
3	CITY DETAILS
4 - 5	PED RAMP DETAILS
6 - 11	MNDOT PED RAMP DETAILS
12 - 27	MILL AND OVERLAY HIGHLANDS AT RIVER PARK
28	MILL AND OVERLAY ALPINE MEADOWS
29	MILL AND OVERLAY ALPINE DRIVE

LEGEND

	SANITARY MANHOLE		EASEMENT - DRAINAGE & UTILITY
	STORM SEWER MANHOLE		SECTION LINE
	CATCH BASIN MANHOLE		LOT LINE
	CATCH BASIN		ELECTRIC LINE
	CULVERT END SECTION		ELECTRIC LINE - BURIED
	HYDRANT		ELECTRIC LINE - OVERHEAD
	VALVE		GAS LINE
	TREE - CONIFEROUS		TELECOMMUNICATION LINE
	TREE - DECIDUOUS		TELECOMM - OVERHEAD
	SHRUB		FIBER OPTIC LINE
	LIGHT POLE		TREE LINE
	SIGN		LANDSCAPE
	MAILBOX		RETAINING WALL
	PEDESTAL - TELECOM		TREE SAVE FENCE
	PEDESTAL - ELECTRIC		SILT FENCE
	HAND HOLE		WATERMAIN
	DRIVE - BITUMINOUS		SANITARY SEWER
	DRIVE - CONCRETE		STORM SEWER
	DRIVE - GRAVEL		DRAIN TILE
	CONCRETE WALK		LANDSCAPE - ROCK
	BITUMINOUS TRAIL		LANDSCAPE - MULCH
	SODDING TYPE LAWN		LANDSCAPE - RIP RAP
	MILL & OVERLAY BITUMINOUS PAVEMENT		
	FULL-DEPTH BITUMINOUS PAVEMENT PATCH		
	REMOVE & REPLACE VALLEY GUTTER		
	REMOVE CONCRETE WALK		
	REMOVE BITUMINOUS TRAIL		
	REMOVE & REPLACE CONCRETE DRIVEWAY		
	REMOVE & REPLACE CONCRETE CURB & GUTTER		
	SAWCUT FULL DEPTH		



CITY OF RAMSEY
 7550 SUNWOOD DRIVE
 RAMSEY, MN 55303
 (763) 427-1410 FAX (763) 433-9898

THE SUBSURFACE UTILITY INFORMATION IN THIS PLAN IS UTILITY QUALITY LEVEL D. THIS QUALITY LEVEL WAS DETERMINED ACCORDING TO THE GUIDELINES OF CI/ASCE 38-02, ENTITLED "STANDARD GUIDELINES FOR THE COLLECTION AND DEPICTION OF EXISTING SUBSURFACE UTILITY DATA."

NOTE: EXISTING UTILITY INFORMATION SHOWN ON THIS PLAN HAS BEEN PROVIDED BY THE UTILITY OWNER. THE CONTRACTOR SHALL FIELD VERIFY EXACT LOCATIONS PRIOR TO COMMENCING CONSTRUCTION AS REQUIRED BY STATE LAW. NOTIFY GOPHER STATE ONE CALL 1-800-252-1166 OR 651-454-0002



Call before you dig
 811
 651 454-0002 Metro
 800 252-1166 Outstate
www.gopherstateonecall.org

I hereby certify that this plan, specification, or report was prepared by me or under my direct supervision and that I am a duly Licensed Professional Engineer under the laws of the State of Minnesota.

Joe Feriancek
 JOE FERIANCEK, P.E.
 ASSISTANT CITY ENGINEER

57095 DATE 04/14/23
 LIC. NO.

DATE	REVISION
04/14/23	ADDED 2" MILL AND OVERLAY TO ALPINE DRIVE

Apr 17, 2023 - 7:46am
 G:\Engineering\AutoCad Dwg\Projects N-Z\Overlays\23-07 2023 Neighborhood Overlay Improvements\Plan Drawings\23-07 Title Sheet.dwg