

MINNESOTA DEPARTMENT OF TRANSPORTATION

CITY OF RAMSEY

167TH AVE RECONSTRUCTION

CITY IMPROVEMENTS PROJECT #23-04

DESIGN DESIGNATION
STA. 10+26.30 TO STA. 70+11.03

FUNTIONAL CLASSIFICATION MINOR COLLECTOR
R-VALUE 30
ΣN-18 889,000
NO. & WIDTH OF TRAFFIC LANES 2 & 11 ft
NO. & WIDTH OF PARKING LANES N/A
ADT (PRESENT YEAR) 2023 2,390
ADT (PROJECTED YEAR) 2043 3,050
HCADT (PROJECTED YEAR) 2043 9.23%
DESIGN SPEED 50 mph
DESIGN LOAD 10 ton

DESIGN SPEED NOT ACHIEVED AT:
STA 68+75 TO 70+08 (STOP CONDITION)
DESIGN SPEED FOR ROADWAY BASED ON
ON STOPPING SIGHT DISTANCE:
HEIGHT OF EYE = 3.5 FT
HEIGHT OF OBJECT = 2.0 FT

CONSTRUCTION PLAN FOR: ROADWAY RECLAMATION, AGGREGATE BASE, PLANT MIXED BITUMINOUS PAVEMENT, ADA IMPROVEMENTS AND STORM SEWER
SAP 199-102-007 LOCATED ON 167TH AVENUE FROM CSAH 5 (NOWTHEN BLVD NW) TO MN HWY 47 (ST. FRANCIS BLVD NW) (GEOGRAPHICAL DESCRIPTION)

(SAP 199-102-007)

GROSS LENGTH	5981 FEET	1.13270 MILES
BRIDGE LENGTH	NA FEET	NA MILES
EXCEPTION LENGTH	NA FEET	NA MILES
NET LENGTH	5981 FEET	1.13270 MILES

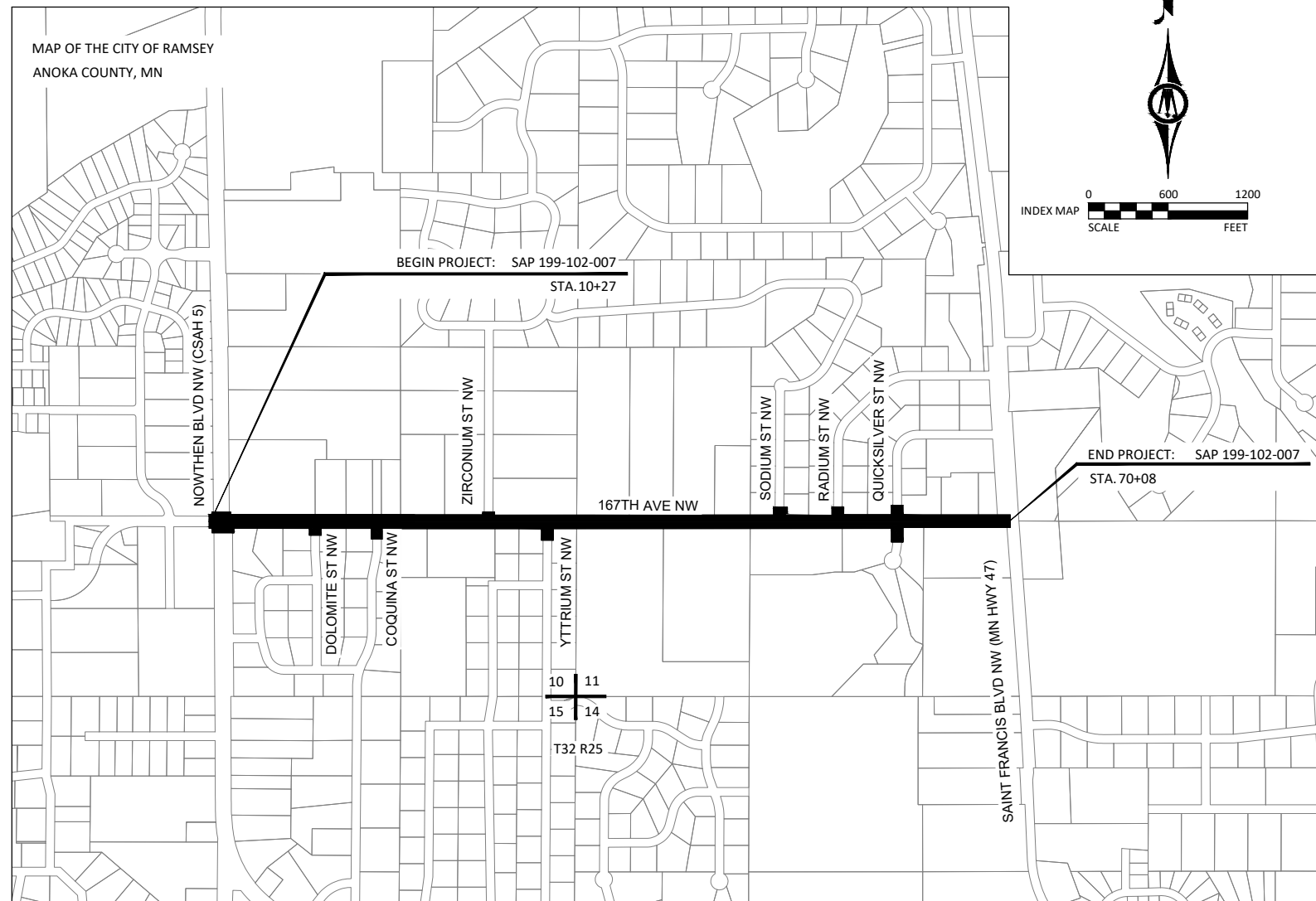
LENGTH AND DESCRIPTION BASED UPON
PROPOSED CENTERLINE

MINN. PROJ. NO. _____ STATE FUNDS _____

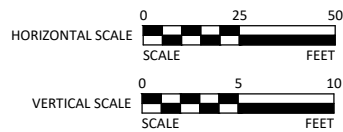
--- GOVERNING SPECIFICATIONS ---
THE 2020 EDITION OF THE MINNESOTA DEPARTMENT OF TRANSPORTATION "STANDARD SPECIFICATION FOR CONSTRUCTION" AND SUPPLEMENTAL SPECIFICATIONS DATED SEPTEMBER 2022 SHALL GOVERN.
ALL TRAFFIC CONTROL DEVICES AND SIGNING SHALL CONFORM AND BE INSTALLED IN ACCORDANCE WITH THE LATEST "MINNESOTA MANUAL ON UNIFORM TRAFFIC CONTROL DEVICES" (MN MUTCD) AND PART VI, THE LATEST "FIELD MANUAL" FOR TEMPORARY TRAFFIC CONTROL DEVICES.

SHEET NUMBER	SHEET TITLE
GENERAL	
1	TITLE SHEET
2	LEGEND
3	STATEMENT OF ESTIMATED QUANTITIES
4-6	TABULATIONS
7-8	ALIGNMENT TABULATION
CIVIL	
9	TYPICAL SECTIONS
10-11	CONSTRUCTION DETAILS
12-17	PEDESTRIAN CURB RAMP DETAILS
18-22	EXISTING CONDITIONS & REMOVALS
23-25	STORM WATER POLLUTION PREVENTION PLAN
26-30	EROSION CONTROL PLAN
31-39	STORM SEWER & STREET PLAN & PROFILE
40-42	INTERSECTION DETAILS
43-47	TRAFFIC CONTROL, SIGNAGE AND STRIPING, SIGNALS
48-59	CROSS SECTIONS

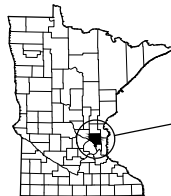
THIS PLAN SET CONTAINS 60 SHEETS.



TYPICAL PLAN SCALE
UNLESS OTHERWISE NOTED:



PROJECT LOCATION



CITY: RAMSEY
COUNTY: ANOKA
DISTRICT: METRO

THE SUBSURFACE UTILITY INFORMATION IN THIS PLAN IS UTILITY QUALITY LEVEL D UNLESS OTHERWISE NOTED. THIS UTILITY LEVEL WAS DETERMINED ACCORDING TO THE GUIDELINES OF CI/ASCE 38-02, ENTITLED "STANDARD GUIDELINES FOR THE COLLECTION AND DEPICTION OF EXISTING SUBSURFACE UTILITY DATA."

BM=890.58
DESCRIPTION
STATION
LOCATION

PROJECT DATUM: ANOKA COUNTY
HORIZONTAL: NAD 83 (1996 ADJ)
VERTICAL: NGVD 88

RECORD DRAWING
INFORMATION
OBSERVER:
CONTRACTOR:
DATE:



7533 SUNWOOD DR NW, SUITE 206
RAMSEY, MINNESOTA 55303
Phone: (763) 433-2851
Email: Ramsey@bolton-menk.com
www.bolton-menk.com



DESIGNED	NO.	ISSUED FOR	DATE
ZFL			
ZFL			
KPK			
CLIENT PROJ. NO. 23-04			

CITY OF RAMSEY, MINNESOTA		SHEET 1 OF 60
167TH AVENUE RECONSTRUCTION SAP 199-102-007		
STATE AID PROJECT NO.	199-102-007	