

# RAMSEY PROPERTIES ADDITION

**KNOW ALL PERSONS BY THESE PRESENTS:** That the City of Ramsey, a Minnesota Municipal Corporation, owner of the following described property:

OUTLOT A, COR TWO.

Has caused the same to be surveyed and platted as RAMSEY PROPERTIES ADDITION and does hereby dedicate to the public for public use the drainage and utility easements as created by this plat.

In witness whereof said City of Ramsey, a Minnesota Municipal Corporation, has caused these presents to be signed by its proper officer

this \_\_\_\_\_ day of \_\_\_\_\_, 20\_\_\_\_.

City of Ramsey

By \_\_\_\_\_ Its Mayor  
 Mark E. Kuzma

By \_\_\_\_\_ Its City Administrator  
 Brian Hagen

STATE OF \_\_\_\_\_, COUNTY OF \_\_\_\_\_

This instrument was acknowledged before me this \_\_\_\_\_ day of \_\_\_\_\_, 20\_\_\_\_, by Mark E. Kuzma,

Mayor of City of Ramsey, a Minnesota Municipal Corporation, on behalf of the company.

Notary Public, Signature \_\_\_\_\_ Notary Public, Printed Name \_\_\_\_\_ My Commission Expires: \_\_\_\_\_

Notary Public \_\_\_\_\_ County, \_\_\_\_\_

STATE OF \_\_\_\_\_, COUNTY OF \_\_\_\_\_

This instrument was acknowledged before me this \_\_\_\_\_ day of \_\_\_\_\_, 20\_\_\_\_, by Brian Hagen, City Administrator, of City of Ramsey, a Minnesota Municipal Corporation, on behalf of the company.

Notary Public, Signature \_\_\_\_\_ Notary Public, Printed Name \_\_\_\_\_ My Commission Expires: \_\_\_\_\_

Notary Public \_\_\_\_\_ County, \_\_\_\_\_

**SURVEYORS CERTIFICATE**  
 I, Rory L. Synsteliën, do hereby certify that this plat was prepared by me or under my direct supervision; that I am a duly Licensed Land Surveyor in the State of Minnesota; that this plat is a correct representation of the boundary survey; that all mathematical data and labels are correctly designated on this plat; that all monuments depicted on this plat have been, or will be correctly set within one year; that all water boundaries and wet lands, as defined in Minnesota Statutes, Section 505.01, Subd. 3, as of the date of this certificate are shown and labeled on this plat; and all public ways are shown and labeled on this plat.

Dated this \_\_\_\_\_ day of \_\_\_\_\_, 20\_\_\_\_.

Rory L. Synsteliën, Licensed Land Surveyor  
 Minnesota License No. 44565

STATE OF MINNESOTA, COUNTY OF \_\_\_\_\_

This instrument was acknowledged before me this \_\_\_\_\_ day of \_\_\_\_\_, 20\_\_\_\_, by Rory L. Synsteliën.

Notary Public, Signature \_\_\_\_\_ Notary Public, Printed Name \_\_\_\_\_ My Commission Expires: \_\_\_\_\_

Notary Public \_\_\_\_\_ County, \_\_\_\_\_

**CITY COUNCIL**  
 City Council, City of Ramsey, Minnesota

This plat of RAMSEY PROPERTIES ADDITION was approved and accepted by the City Council of the City of Ramsey, Minnesota at a regular meeting thereof held this \_\_\_\_\_ day of \_\_\_\_\_, 20\_\_\_\_, and said plat is in compliance with the provisions of Minnesota Statutes, Section 505.03, Subd. 2.

City Council, City of Ramsey, Minnesota

By: \_\_\_\_\_ Mayor  
 \_\_\_\_\_ Clerk

**COUNTY SURVEYOR**

I hereby certify that in accordance with Minnesota Statutes, Section 505.021, Subd. 11, this plat has been reviewed and approved

this \_\_\_\_\_ day of \_\_\_\_\_, 20\_\_\_\_.

By: \_\_\_\_\_  
 David M. Ziegler  
 Anoka County Surveyor

**COUNTY AUDITOR/TREASURER**

Pursuant to Minnesota Statutes, Section 505.021, Subdivision 9, taxes payable in the year 20\_\_\_\_ on the land hereinbefore described have been paid.

Also, pursuant to Minnesota Statutes, Section 272.12, there are no delinquent taxes and transfer entered this \_\_\_\_\_ day of \_\_\_\_\_, 20\_\_\_\_.

By: \_\_\_\_\_ Property Tax Administrator  
 By: \_\_\_\_\_ Deputy

**COUNTY RECORDER/REGISTRAR OF TITLES**

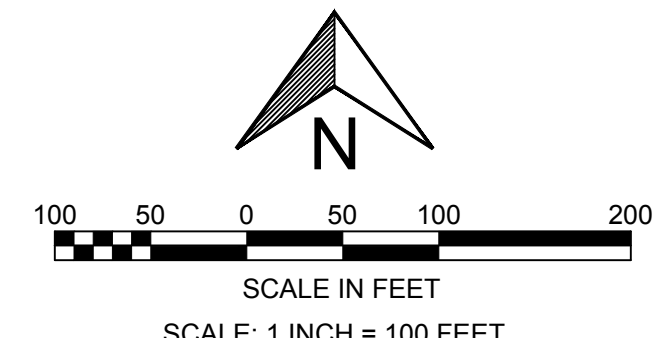
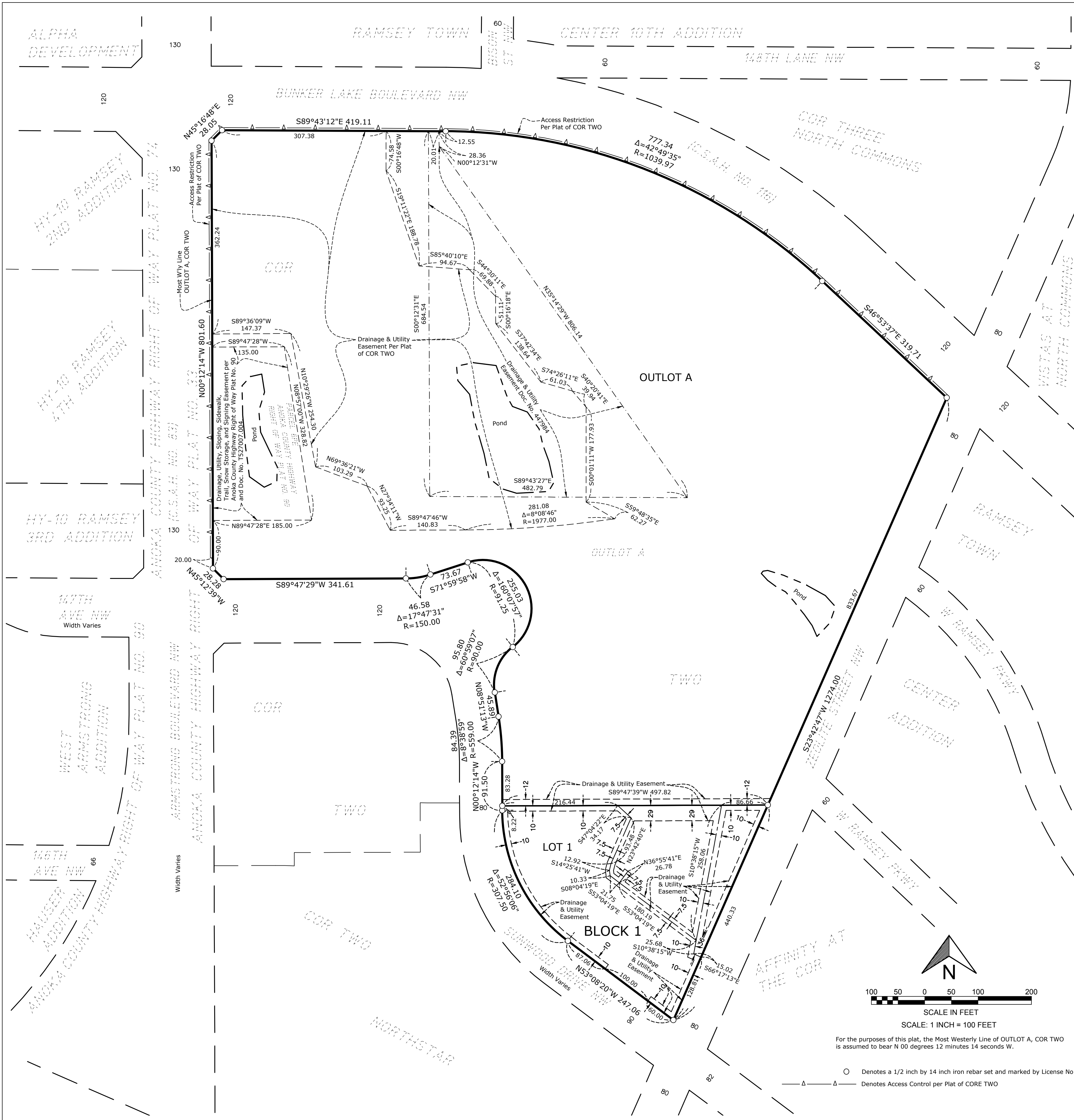
County of Anoka, State of Minnesota

I hereby certify that this plat of RAMSEY PROPERTIES ADDITION was filed in the Office of the County Recorder/Registrar of Titles for public record on

this \_\_\_\_\_ day of \_\_\_\_\_, 20\_\_\_\_, at \_\_\_\_\_ o'clock \_\_\_\_\_ M. and was duly recorded as

Document Number \_\_\_\_\_

By: \_\_\_\_\_ County Recorder/Registrar of Titles  
 By: \_\_\_\_\_ Deputy



For the purposes of this plat, the Most Westerly Line of OUTLOT A, COR TWO is assumed to bear N 00 degrees 12 minutes 14 seconds W.

○ Denotes a 1/2 inch by 14 inch iron rebar set and marked by License No. 44565.  
 △ Denotes Access Control per Plat of CORE TWO