

5364 142nd Cir NW - Ramsey, MN 55303

□ = 1 sq. ft. ■ DP75

Framing

- Treated
- 5'1/4 x 9'1/2 Drapped LVL Treated
- 5'1/4 x 9'1/2 Flush LVL Treated
- (3) 2" x 10" - Side Beams
- 2" x 10" - 10" - O.C.
- 2" x 12" Stair Stringer 9" O.C.
- 6" x 6" Posts

Decking

- Azek Vintage Collection
- Decking opposite stairs

Railings

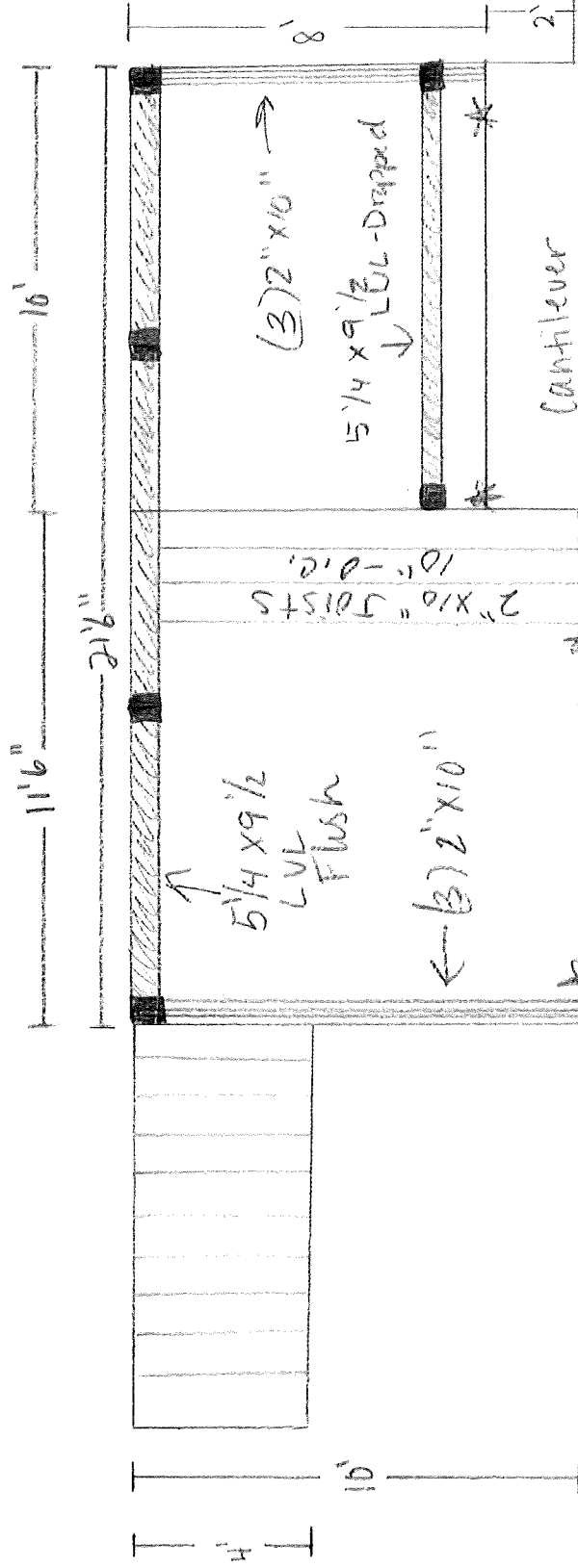
- Westbury #10 - Black
- Black 2" posts
- Height 36"
- Spindle space 4"
- Continous Stair Handrail

Stairs

- 11 Risers - 7 3/4" Max Rise
- 10 Treads - 11" - 10" Minimum
- 2" x 12" Stair Stringers - 9" O.C.

- * Post Lights
- * Riser Lights

- Azek Vintage Collection fascia



* Lateral Load Connectors