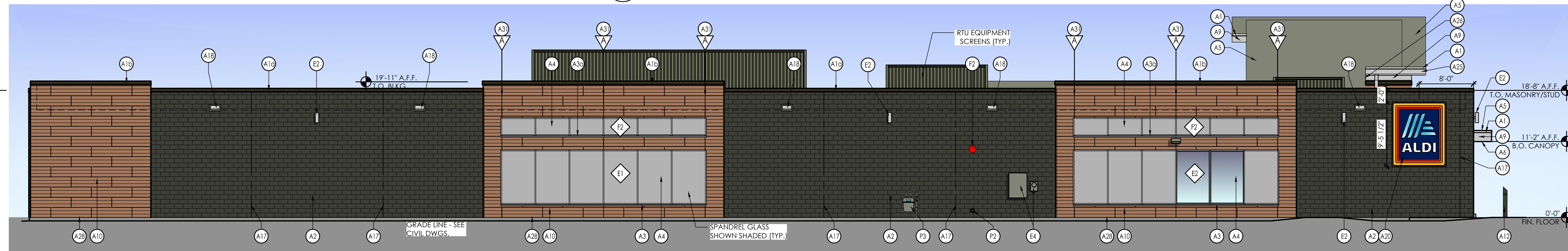
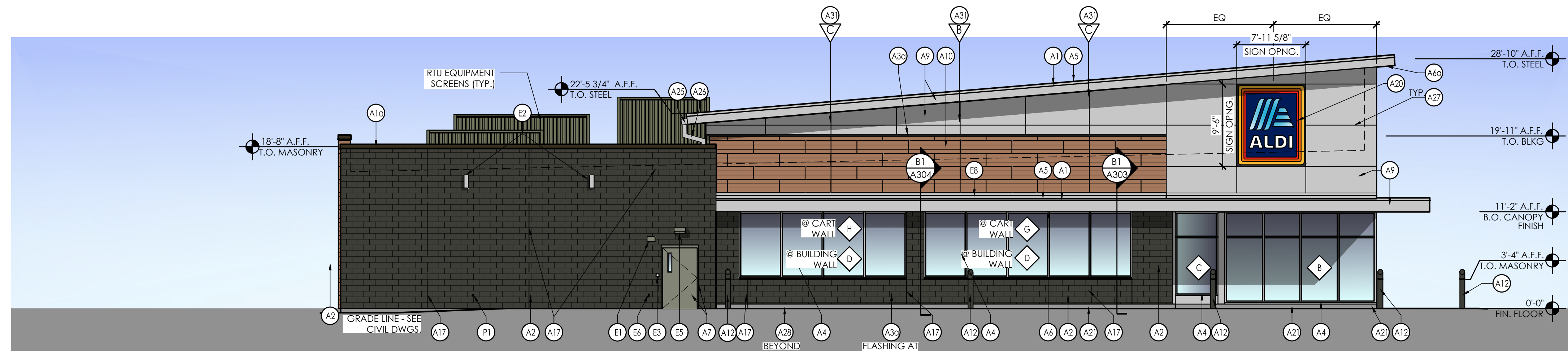


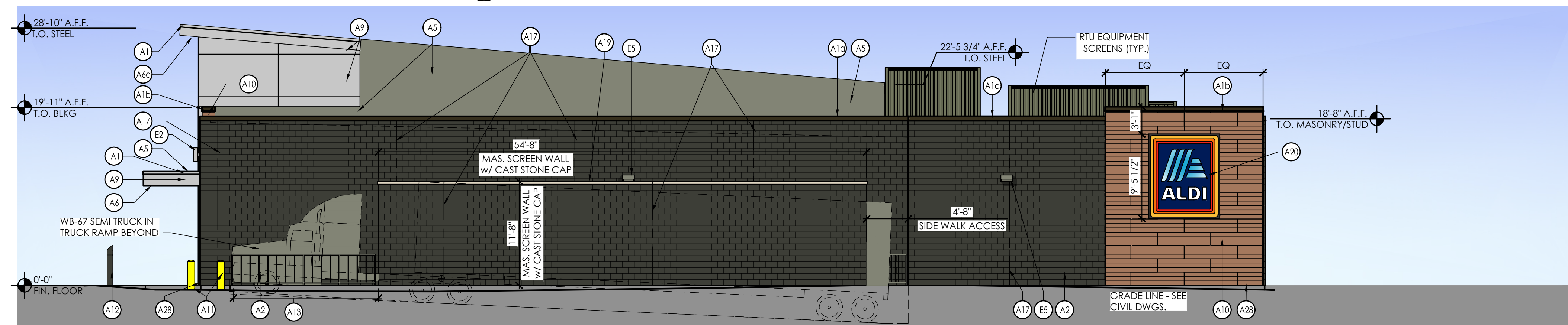
4 West Elevation  
SCALE: 1/8" = 1'-0"



3 East Elevation  
SCALE: 1/8" = 1'-0"



2 North Elevation  
SCALE: 1/8" = 1'-0"



1 South Elevation  
SCALE: 1/8" = 1'-0"

SIGNAGE NOTE:  
ONLY THE ALDI LOGO AND ALDI LETTERING ON THE SIGNAGE WILL BE ILLUMINATED. THE RED, ORANGE, YELLOW AND BLUE BACKGROUND WILL NOT BE ILLUMINATED.

| CEE-2 SIGNAGE           |          |                  |        |
|-------------------------|----------|------------------|--------|
| DESCRIPTION             | QUANTITY | SQ. FT. PER SIGN | TOTALS |
| TOWER SIGN              | 2        | 74.9             | 149.8  |
| SURF. MOUNTED LOGO SIGN | 2        | 74.9             | 149.8  |
| TOTAL SIGNAGE           |          |                  | 299.6  |

SIGNAGE IS SHOWN FOR REFERENCE ONLY AND SHALL BE UNDER SEPARATE PERMIT SUBMITTAL.

| Issued:                        | Date:    |
|--------------------------------|----------|
| A Issued for Use Client Review | 05/08/23 |
| B Issued for Use Client Review | 06/01/23 |
| C Issued for Use Client Review | 06/02/23 |
| D Issued for Use Client Review | 06/05/23 |
| E Issued for Use Client Review | 06/12/23 |

| Revisions: | Date: |
|------------|-------|
| 1          |       |
| 2          |       |
| 3          |       |
| 4          |       |
| 5          |       |
| 6          |       |
| 7          |       |
| 8          |       |
| 9          |       |

Seal PROJECT ARCHITECT/ENGINEER DATE

PROJECT LEAD DATE

PROJECT DESIGNER DATE

Copyright © 2023  
APD Engineering & Architecture  
11111 11111  
11111 11111  
11111 11111

Drawing Alteration  
It is a violation of law for any person, unless acting under the direction of licensed Architect, Professional Engineer, Landscape Architect, or Land Surveyor to alter any item on this document in any way. Any licensee who offers this document is required by law to affix his or her seal and to add the notation "Altered By" followed by his or her signature and the specific description of the alteration or revision.

DO NOT SCALE PLANS  
Copying, Printing, Software and other processes required to produce these prints can stretch or shrink the actual paper or layout. Therefore, scaling of this drawing may be inaccurate. Contact APD &EA with any need for additional dimensions or clarifications.

**APD**  
ENGINEERING  
ARCHITECTURE  
615 Fishers Run Victor, NY 14564  
585.742.2222 - www.apd.com

**ALDI Inc.**  
4201 Bagley Avenue North  
Faribault, MN 55021  
(507) 333-9460  
(507) 333-9475 Fax

ALDI Inc. Store #: XX  
Ramsey, MN

Ramsey, MN  
Anoka County  
Project Name & Location:

Exterior Elevations  
Drawing Name:

Date: 07/22/22  
Type: RHSDV7ER  
Drawn By: CB  
Scale: As Noted

Project No.  
23-0230A  
CEE-6  
Drawing No.

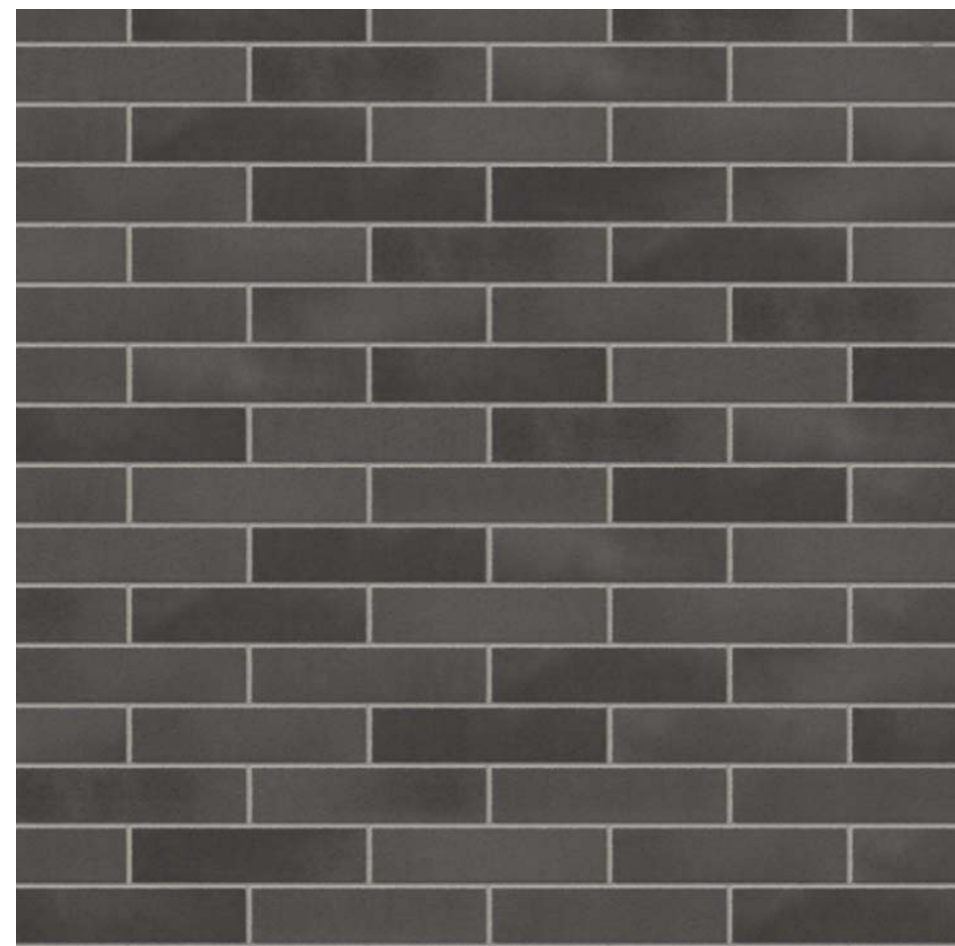


# ALDI - Prototype Color Palette



Dark

## Masonry:



Spec-Brik: Chesapeake Blend

## Metal Coping:



At High Roof & Canopy: Silver



At Brick: Musket Gray



At Nichiha Towers: Cedar

## Nichiha Panels:



Exterior Cladding: Cedar



Base Flashing: Cedar

## Aluminum Composite Panel:



Bright Silver

## Aluminum Sill:



Bright Silver



Cedar

| EXTERIOR FINISH SCHEDULE |   |  |   |
|--------------------------|---|--|---|
| KEY                      | MATERIAL / MFG.   | COLOR / NO.  | NOTES   |
| A1                       | PREFINISHED METAL COPING  | A1- SILVER - AT HIGH ROOF & CANOPY<br>A1a - PETERSEN ALUM - MUSKET GREY-AT BRICK<br>A1b - PETERSEN ALUM - #CEDAR 397C0290<br>SPRAY CODE - AT NICHHA TOWERS | SEE SPECIFICATIONS APPENDIX 'B'   |
| A2                       | <b>BASE BID (BRICK 'A')</b><br>SPEC-BRICK CONCRETE MASONRY VENEER             | 4WX8HX16<br>CHESAPEAKE BLEND w/ HOLCIM "SMITH GRAY"<br>MORTAR<br>MORTAR ALT: SOLOMON "85X DARK<br>CHOCOLATE"   | CONTACT THE CONCRETE PRODUCTS GROUP AT 800-789-0872 FOR ORDERING<br>SEE SPEC FOR ADDITIONAL INFO  |
|                          | <b>ALTERNATE No. 2 (BRICK 'B')</b><br>QUIK-BRICK CONCRETE MASONRY VENEER      | 4WX8HX16<br>MAROUS BLEND w/ HOLCIM "SMITH GRAY"<br>MORTAR<br>MORTAR ALT: SOLOMON "85X DARK<br>CHOCOLATE"   | CONTACT ECHELON MASONRY AT 800-899-8455 FOR ORDERING<br>SEE SPEC FOR ADDITIONAL INFO  |
|                          | <b>ALTERNATE No.3 (BRICK 'C')</b><br>BELDEN BRICK                             | MODULAR EBONY BLACK BLEND w/ HOLCIM<br>"SMITH GRAY" MORTAR<br>MORTAR ALT: SOLOMON "85X DARK<br>CHOCOLATE"  | CONTACT THE BELDEN BRICK COMPANY AT 330-451-2031 FOR ORDERING<br>SEE SPEC FOR ADDITIONAL INFO   |
| A3                       | PREFINISHED ALUM. SILL FLASHING   | A3 - BRIGHT SILVER<br>A3a - PETERSEN ALUM # "CEDAR 397C0290<br>SPRAY CODE"   |   |
| A4                       | ALUMINUM STOREFRONT SYSTEM  | ANODIZED ALUM.   | RE: DWG. A602   |
| A5                       | MEMBRANE ROOFING  | GRAY   | TOP OF SLOPED ROOF, CANOPY ROOF, AND BACK OF RAISED ROOF PROJECTIONS - SEE SPECIFICATIONS<br>APPENDIX 'B'   |
| A6                       | METAL SOFFIT PANELS   | A6 - SOLID PANELS - SILVER METALLIC<br>A6a - 1/2 VENTED PANELS - SILVER METALLIC   | RE: DWG. A301-A304  |
| A7                       | EXTERIOR PAINT  |  | RE: DWG. A603   |
| A8                       | NOT USED  |  |   |
| A9                       | ALUMINUM COMPOSITE PANEL  | BRIGHT SILVER  | PROVIDE PANEL JOINTS AS SHOWN - PROVIDE ONE PIECE TIGHT FIT EXTRUDED MOLDING INSTALLATION<br>SYSTEM WITH CENTER REVEAL TRIM BETWEEN PANELS AND J TRIM AT PANEL EDGES.   |
| A10                      | NICHHA FIBER CEMENT EXTERIOR CLADDING   | VINTAGEWOOD 'CEDAR'  | PANELS SHALL EXTEND ONTO THE ROOF FOR THE FULL DEPTH OF THE BUMPOUT. CONTACT NICHHA AT<br>770-805-9466 FOR ORDERING. SEE SPEC FOR TRIM REQUIREMENTS AND ADDITIONAL INFO. ALL INCLUDED<br>TRIM ('H', 'J', 'L', CORNER, ETC) TO MATCH FCP |
| A11                      | BLRD-2  | PT-19 / CL-4   | RE: DWG A603  |
| A12                      | BLRD-4  |  | RE: DWG A603  |
| A13                      | GUARD RAIL TYPE "A"   | GALVANIZED STEEL   | RE: DWG B2/A507   |
| A14                      | GUARD RAIL TYPE "B"   | GALVANIZED STEEL   | RE: DWG B2/A507   |
| A15                      | BLRD-3  | GALVANIZED   | RE: DWG A603  |
| A16                      | DOCK LEVELER / SEAL AND BUMPERS   | LEVELER - FACTORY FINISH / SEAL AND<br>BUMPERS - FACTORY FINISH - BLACK  | PROVIDE BRICK BEHIND DOCK SEAL  |
| A17                      | MASONRY CONTROL JOINT   |  | MAX 20' OC  |
| A18                      | SCUPPER, 1/8" OVERFLOW SCUPPER, COLLECTOR<br>& DOWN SPOUT (SEE PLUMBING DWGS) | MATCH COPING ABOVE   | RE: DWG A2/A507   |
| A19                      | ARCHITECTURAL CAST STONE  | TANNERSTONE: AG-1  | SEE SPEC FOR ADDITIONAL INFORMATION - MORTAR COLOR TO MATCH CAST STONE  |
| A20                      | ALDI TOWER SIGN   | BY SIGN VENDOR   | 7'-11 1/8" w. x 9'-5 1/2" h.; VERIFY SIGN SIZE PRIOR TO FRAMING OPENING<br>SEE DETAIL C1/A504   |
| A21                      | CRTB  | NATURAL  | RE: DWG A603 - SEE STRUCTURAL DWGS  |

| EXTERIOR FINISH SCHEDULE |   |   |  |
|--------------------------|---|---|--|
| KEY                      | MATERIAL / MFG.                                   | COLOR / NO.                                       | NOTES  |
| A22                      | KNOX BOX  | FACTORY FINISH                                    | CONFIRM TYPE AND LOCATION WITH LOCAL FIRE MARSHAL  |
| A23                      | AUTO DOOR SYSTEM & TRANSOM                        | ANODIZED ALUMINUM                                 | RE: DWG A601 & A602  |
| A24                      | NOT USED  |   |  |
| A25                      | 8" X 8" PRE-FINISHED ALUM GUTTER                  | MATCH PREFINISHED METAL COPING                    |  |
| A26                      | 8" X 8" PRE-FINISHED ALUM DOWNSPOUT               | MATCH PREFINISHED METAL COPING                    | TERMINATE AT CONC. SPLASH BLOCK  |
| A27                      | ACP H/J TRIM / JOINT COVER                        |   | TYPICAL AT EDGES AND BUTT JOINTS OF ACP  |
| A28                      | NICHHA FIBER CEMENT PANEL BASE FLASHING           | PETERSEN ALUMINUM - #CEDAR 397C0290<br>SPRAY CODE | SEE SPEC FOR ADDITIONAL INFO   |
| A29                      | NOT USED  |   |  |
| A30                      | DUMPSTER ENCLOSURE                                | WINCHESTER GREY                                   | RE: DWG A507   |
| A31                      | NICHHA CONTROL JOINT WITH "H" CLIP                |   |  |
| A32                      | NOT USED  |   |  |
| A33                      | NOT USED  |   |  |
| E1                       | EXIT DISCHARGE LIGHT                              | FACTORY FINISH                                    | MOUNT @ 8'-0" A.F.F.   |
| E2                       | WALL SCONCE                                       | FACTORY FINISH                                    | MOUNT @ 14'-8" A.F.F.; RE: DWG. A111 FOR DIMENSIONS  |
| E3                       | JUNCTION BOX WITH COVER FOR FUTURE CARD<br>READER |   | MOUNT CENTERED @ 46" A.F.F., SEE ELEC DWGS   |
| E4                       | UTILITY METERING & C.T.                           | FACTORY FINISH                                    | SEE ELECTRICAL DWGS  |
| E5                       | EXTERIOR WALL PACK                                | FACTORY FINISH                                    | MAN DOORS - MOUNT @ 9'-0" A.F.F., BREAK ROOM WINDOW @ 10'-0" A.F.F.<br>LOADING DOCK - MOUNT @ 12'-0" A.F.F.  |
| E6                       | EXTERIOR DUPLEX RECEPTACLE                        | FACTORY FINISH                                    | MOUNT @ 1'-6" A.F.F. IN 4" SQUARE J-BOX  |
| E7                       | NOT USED  |   |  |
| E8                       | EXTERIOR UPLIGHTING FIXTURES                      | FACTORY FINISH                                    | SEE ELEC DWGS  |
| F1                       | FIRE DEPT. CONNECTION                             | FACTORY FINISH                                    | SEE FIRE PROTECTION DWGS   |
| F2                       | MOTOR GONG  | FACTORY FINISH                                    | SEE FIRE PROTECTION DWGS   |
| P1                       | HOSE BIB  | FACTORY FINISH                                    | SEE PLUMBING DWGS  |
| P2                       | RPZ DISCHARGE                                     | FACTORY FINISH                                    | SEE PLUMBING DWGS  |
| P3                       | GAS METER   | FACTORY FINISH                                    | SEE PLUMBING DWGS  |
| XX                       | GLAZING KEY                                       |   | RE: DWG A602   |
| WV                       | ALIGN KEY   |   | A: ALIGN NICHHA PANEL JOINTS AND WINDOW MULLIONS<br>B: ALIGN ALUMINUM COMPOSITE PANEL JOINTS AND NICHHA PANEL JOINTS<br>C: ALIGN NICHHA PANEL JOINTS, ALUMINUM COMPOSITE PANEL JOINTS, AND WINDOW MULLIONS |

| Issued:                        | Date:    |
|--------------------------------|----------|
| A Issued for Use Client Review | 07/25/22 |
| B Issued for Use Client Review | 09/02/22 |
| C Issued for Use Client Review | 09/07/22 |
| D Issued for Use Client Review | 05/08/23 |
| E                              |          |

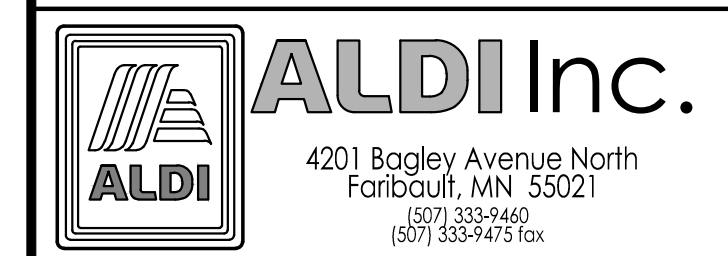
| Revisions: | Date: |
|------------|-------|
| 1          |       |
| 2          |       |
| 3          |       |
| 4          |       |
| 5          |       |
| 6          |       |
| 7          |       |
| 8          |       |
| 9          |       |

|                            |      |
|----------------------------|------|
| Seal                       | Seal |
| PROJECT ARCHITECT/ENGINEER | DATE |
| PROJECT LEAD               | DATE |
| PROJECT DESIGNER           | DATE |

Copyright © 2022  
APD Engineering & Architecture  
Drawing Alteration  
It is a violation of law for any person, unless acting under the  
direction of licensed Architect, Professional Engineer, Landscape  
Architect, or Land Surveyor to alter any item on this document in any  
way. Any licensee who offers this document is required by law to affix  
his or her seal and to add the notation "Altered By:" followed by his or  
her signature and the specific description of the alteration or revision.

**DO NOT SCALE PLANS**

Copying, Printing, Software and other processes required to produce  
these prints can stretch or shrink the actual paper or layout.  
Therefore, scaling of this drawing may be inaccurate. Contact APD  
E&A with any need for additional dimensions or clarifications.



ALDI Inc. Store #: XX  
Ramsey, MN

Ramsey, MN  
Anoka County  
Project Name & Location:

Exterior  
Finish Schedule  
Drawing Name:

|                 |                         |
|-----------------|-------------------------|
| Date: 07/22/22  | Project No.<br>23-0230A |
| Type: RHSDV7ER  |                         |
| Drawn By: CB    |                         |
| Scale: As Noted | Drawing No.             |