

# AFFINITY AT THE COR 2ND ADDITION

**KNOW ALL PERSONS BY THESE PRESENTS:** That the City of Ramsey, a Minnesota municipal corporation, owner of the following described property:

Outlot C, AFFINITY AT THE COR, Anoka County, Minnesota.

Has caused the same to be surveyed and platted as AFFINITY AT THE COR 2ND ADDITION.

In witness whereof said City of Ramsey, a Minnesota municipal corporation, has caused these presents to be signed by its proper officer this \_\_\_\_\_ day of \_\_\_\_\_, 20\_\_\_\_\_.

City of Ramsey

\_\_\_\_\_  
Signature Printed Name, Title

STATE OF \_\_\_\_\_  
COUNTY OF \_\_\_\_\_

The foregoing instrument was acknowledged before me this \_\_\_\_\_ day of \_\_\_\_\_, 20\_\_\_\_\_, by \_\_\_\_\_, as \_\_\_\_\_ of the City of Ramsey, a Minnesota municipal corporation.

\_\_\_\_\_  
Signature Printed Name, Notary  
Notary Public, \_\_\_\_\_ County, \_\_\_\_\_  
My Commission Expires \_\_\_\_\_

### SURVEYORS CERTIFICATION

I Jared Averbeck do hereby certify that this plat was prepared by me or under my direct supervision; that I am a duly Licensed Land Surveyor in the State of Minnesota; that this plat is a correct representation of the boundary survey; that all mathematical data and labels are correctly designated on this plat; that all monuments depicted on this plat have been, or will be correctly set within one year; that all water boundaries and wet lands, as defined in Minnesota Statutes, Section 505.01, Subd. 3, as of the date of this certificate are shown and labeled on this plat; and all public ways are shown and labeled on this plat.

Dated this \_\_\_\_\_ day of \_\_\_\_\_, 20\_\_\_\_\_.

\_\_\_\_\_  
Jared Averbeck, Licensed Land Surveyor  
Minnesota License No. 53642

STATE OF MINNESOTA  
COUNTY OF HENNEPIN

This instrument was acknowledged before me this \_\_\_\_\_ day of \_\_\_\_\_, 20\_\_\_\_\_, by Jared Averbeck.

\_\_\_\_\_  
Signature Printed Name, Notary  
Notary Public, \_\_\_\_\_ County, Minnesota  
My Commission Expires January 31, 20\_\_\_\_\_

### CITY COUNCIL, CITY OF RAMSEY, MINNESOTA

This plat of AFFINITY AT THE COR 2ND ADDITION was approved and accepted by the City Council of the City of Ramsey, Minnesota at a regular meeting thereof held this \_\_\_\_\_ day of \_\_\_\_\_, 20\_\_\_\_\_, and said plat is in compliance with the provisions of Minnesota Statutes, Section 505.03, Subd. 2.

City Council, City of Ramsey, Minnesota

By: \_\_\_\_\_, Mayor By: \_\_\_\_\_, Clerk

### COUNTY SURVEYOR

I hereby certify that in accordance with Minnesota Statutes, Section 505.021, Subd. 11, this plat has been reviewed and approved this \_\_\_\_\_ day of \_\_\_\_\_, 20\_\_\_\_\_.

\_\_\_\_\_  
David M. Zieglmeier, Anoka County Surveyor

### COUNTY AUDITOR/TREASURER

Pursuant to Minnesota Statutes, Section 505.021, Subd. 9, taxes payable in the year 20\_\_\_\_\_ on the land hereinbefore described have been paid. Also, pursuant to Minnesota Statutes, Section 272.12, there are no delinquent taxes and transfer entered this \_\_\_\_\_ day of \_\_\_\_\_, 20\_\_\_\_\_.

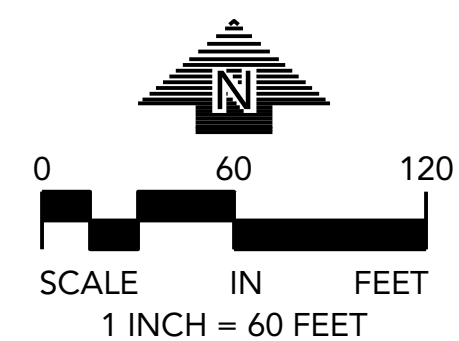
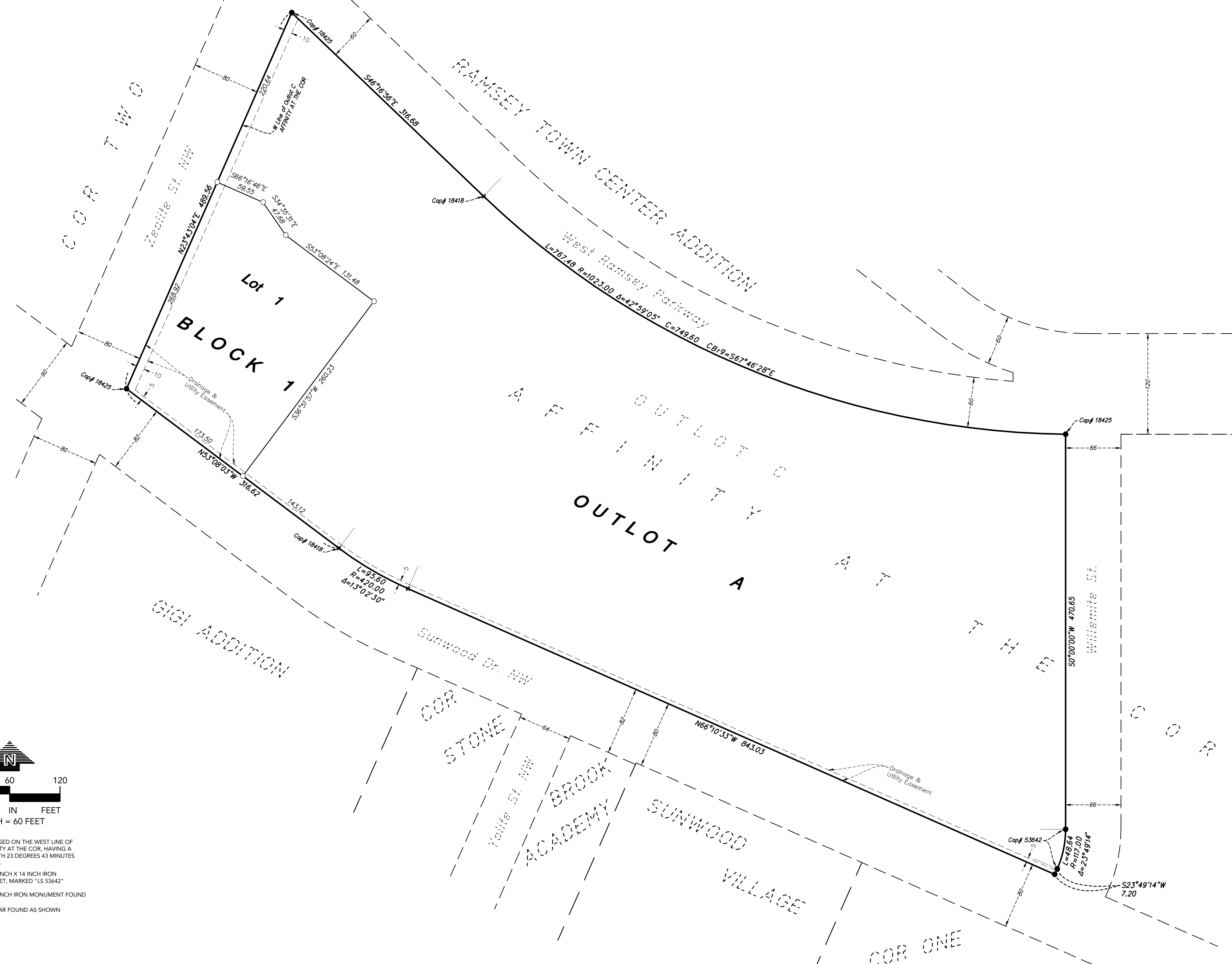
\_\_\_\_\_  
Property Tax Administrator By: \_\_\_\_\_, Deputy

### COUNTY RECORDER/REGISTRAR OF TITLES COUNTY OF ANOKA, STATE OF MINNESOTA

I hereby certify that this plat of AFFINITY AT THE COR 2ND ADDITION was filed in the office of the County Recorder/Registrar of Titles for public record on this \_\_\_\_\_ day of \_\_\_\_\_, 20\_\_\_\_\_, at \_\_\_\_\_ o'clock \_\_\_\_M. and was duly recorded as Document Number \_\_\_\_\_.

\_\_\_\_\_  
County Recorder/Registrar of Titles By: \_\_\_\_\_, Deputy

# AFFINITY AT THE COR 2ND ADDITION



BEARINGS ARE BASED ON THE WEST LINE OF OUTLOT C, AFFINITY AT THE COR, HAVING A BEARING OF NORTH 23 DEGREES 43 MINUTES 04 SECONDS EAST.

- DENOTES 1/2 INCH X 14 INCH IRON MONUMENT SET, MARKED "LS 53642"
- DENOTES 1/2 INCH IRON MONUMENT FOUND AS SHOWN
- ✱ DENOTES REBAR FOUND AS SHOWN