

**CORTRUST BANK**  
 RAMSEY, MINNESOTA

**LOUCKS**  
 PLANNING CIVIL ENGINEERING LAND SURVEYING LANDSCAPE ARCHITECTURE ENVIRONMENTAL

7200 Hemlock Lane, Suite 300  
 Maple Grove, MN 55369  
 763.424.5505  
 www.louckscinc.com

**CADD QUALIFICATION**  
 CADD files prepared by the Consultant for this project are instruments of the Consultant's professional services for use solely with respect to this project. These CADD files shall not be used on other projects, for additions to this project, or for completion of this project by others without written approval by the Consultant. With the Consultant's approval, others may be permitted to obtain copies of the CADD drawing files for information and reference only. All intentional or unintentional revisions, additions, or deletions to these CADD files shall be made at the full risk of that party making such revisions, additions or deletions and that party shall hold harmless and indemnify the Consultant from any & all responsibilities, claims, and liabilities.

**SUBMITTAL/REVISIONS**

CITY SUBMITTAL	4/17/2023
CITY RESUBMITTAL	5/10/2023
CITY RESUBMITTAL	6/8/2023
CITY RESUBMITTAL	6/26/2023

**PROFESSIONAL SIGNATURE**  
 I hereby certify that this plan, specification or report was prepared by me or under my direct supervision and that I am a duly Licensed Professional Engineer under the laws of the State of Minnesota.

License No. 53706  
 Date

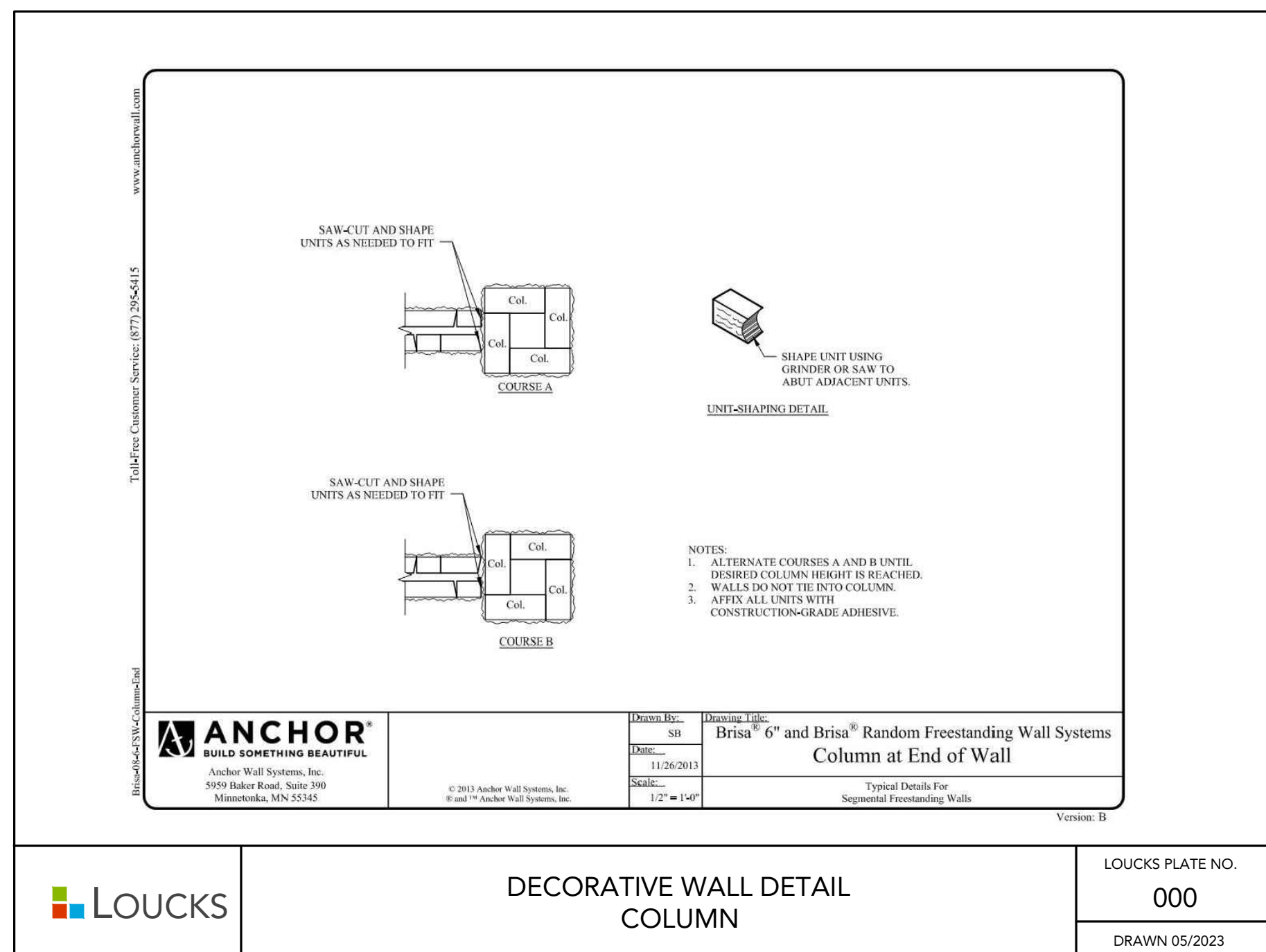
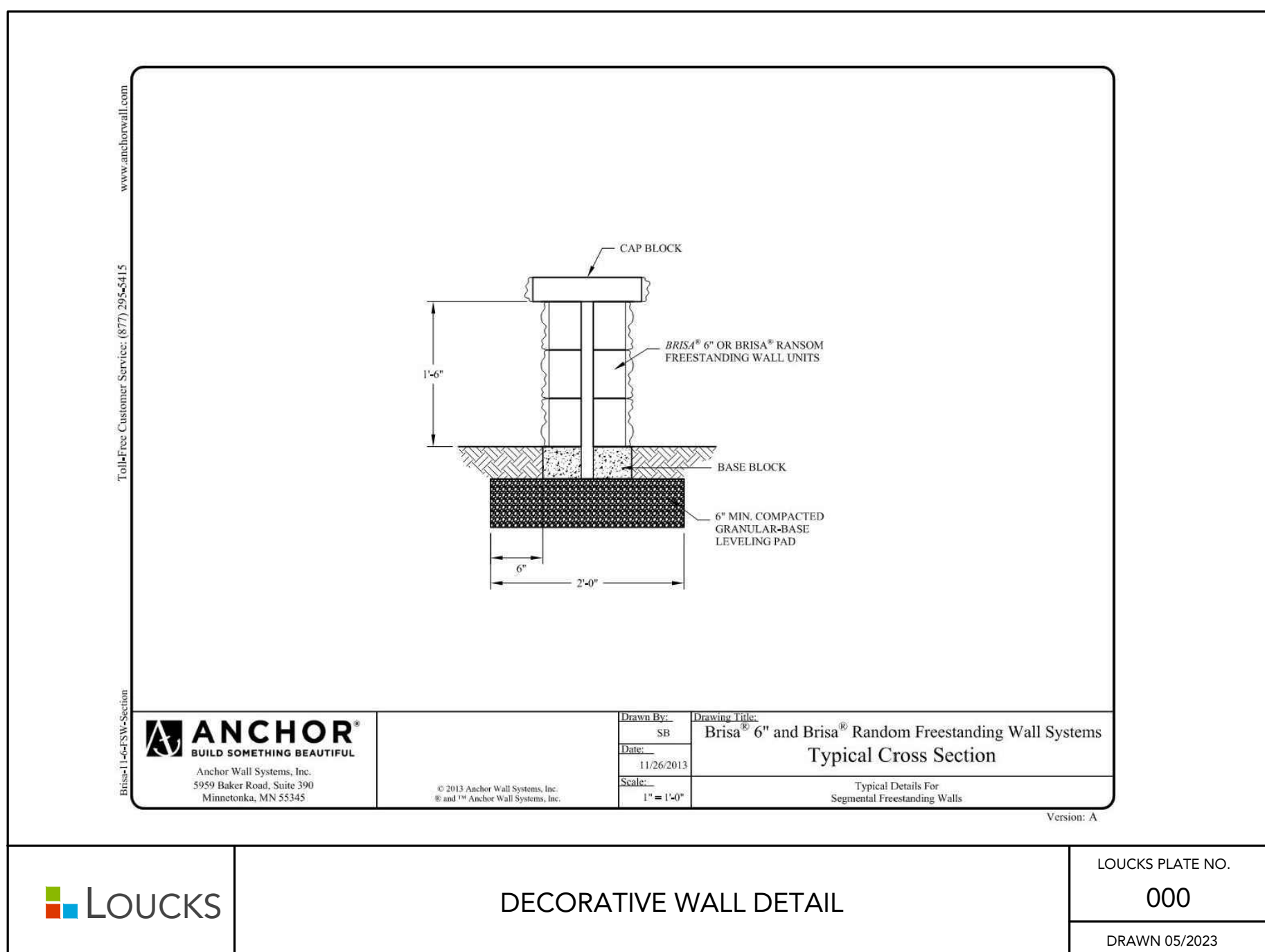
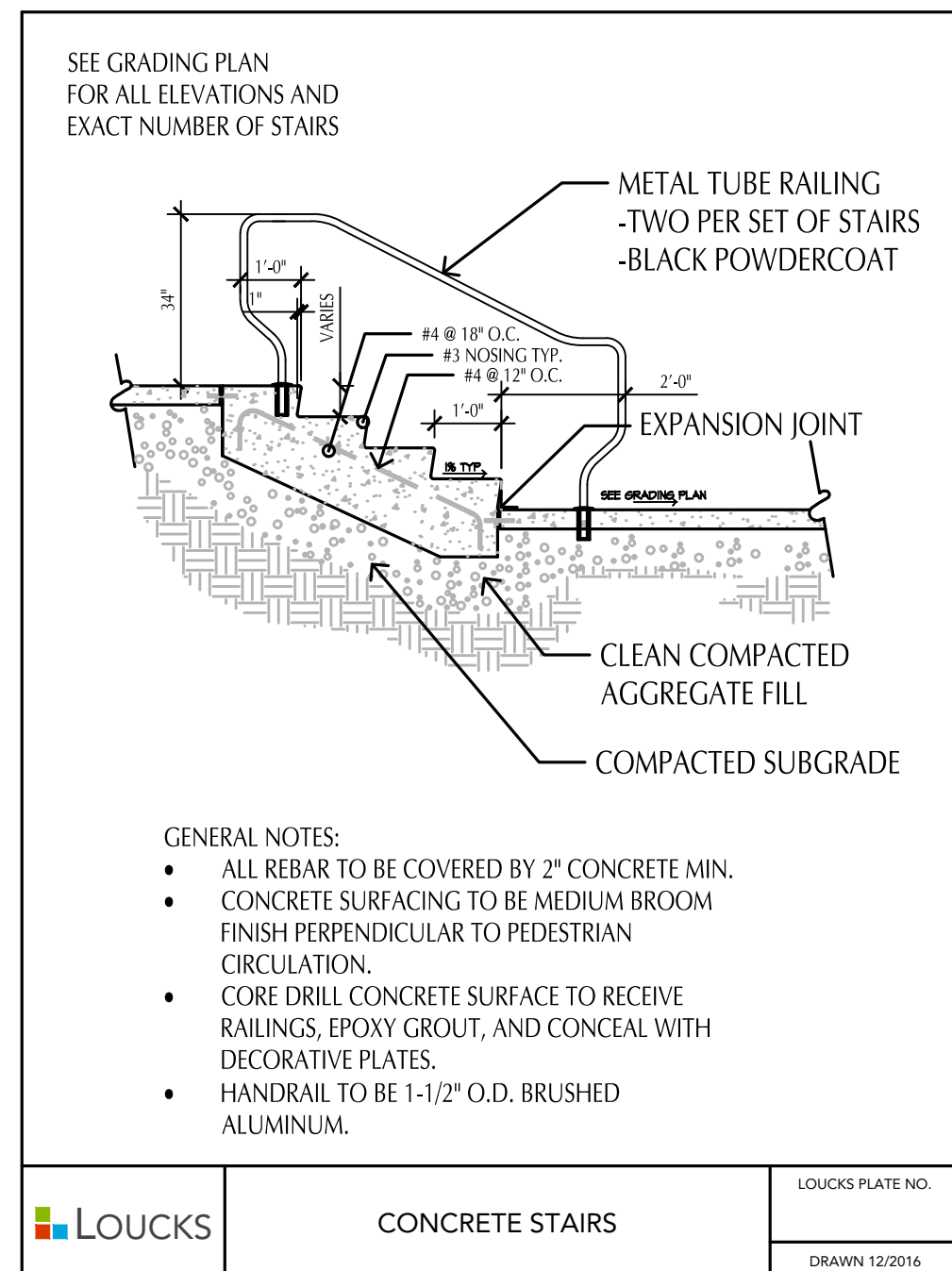
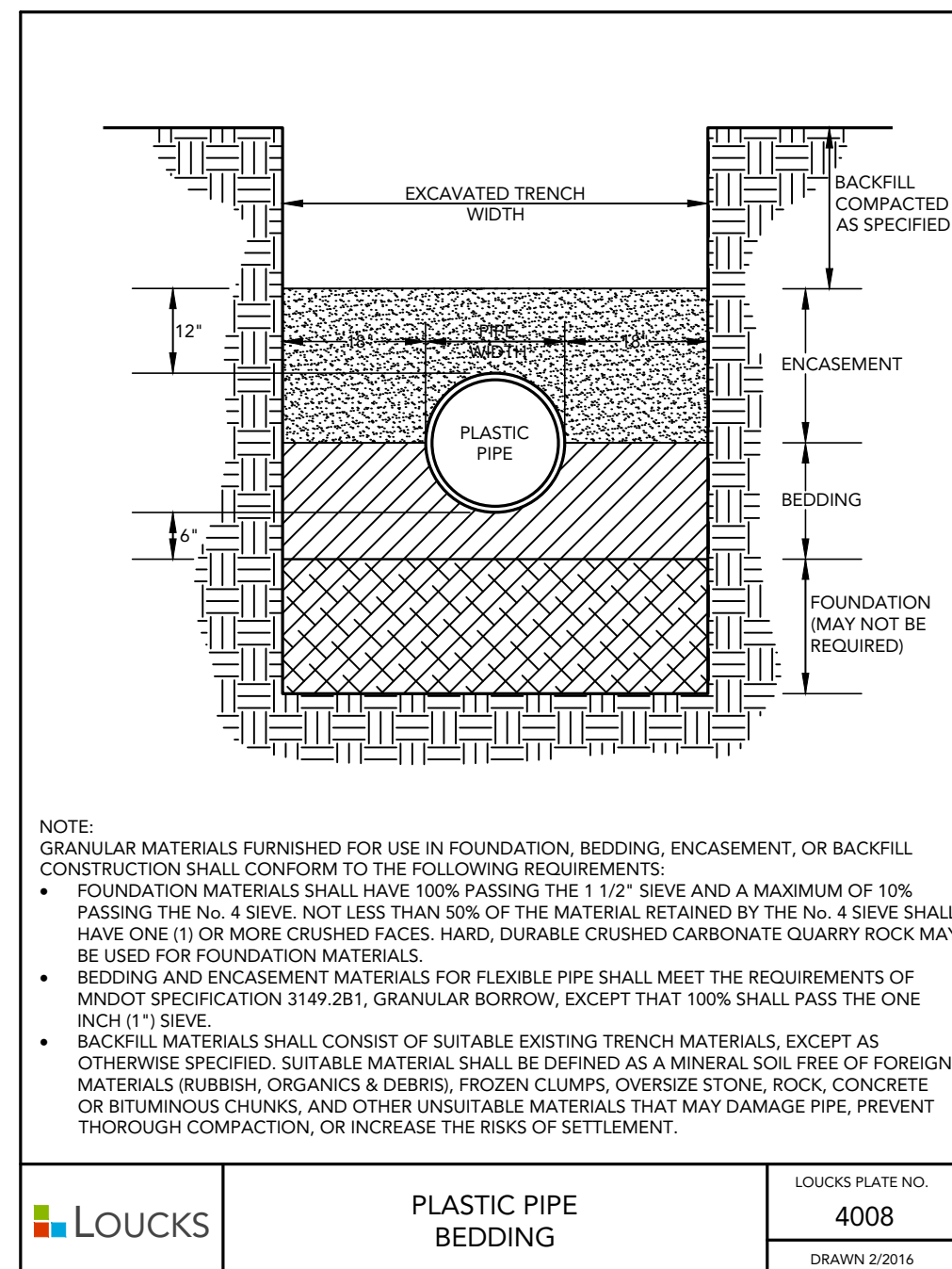
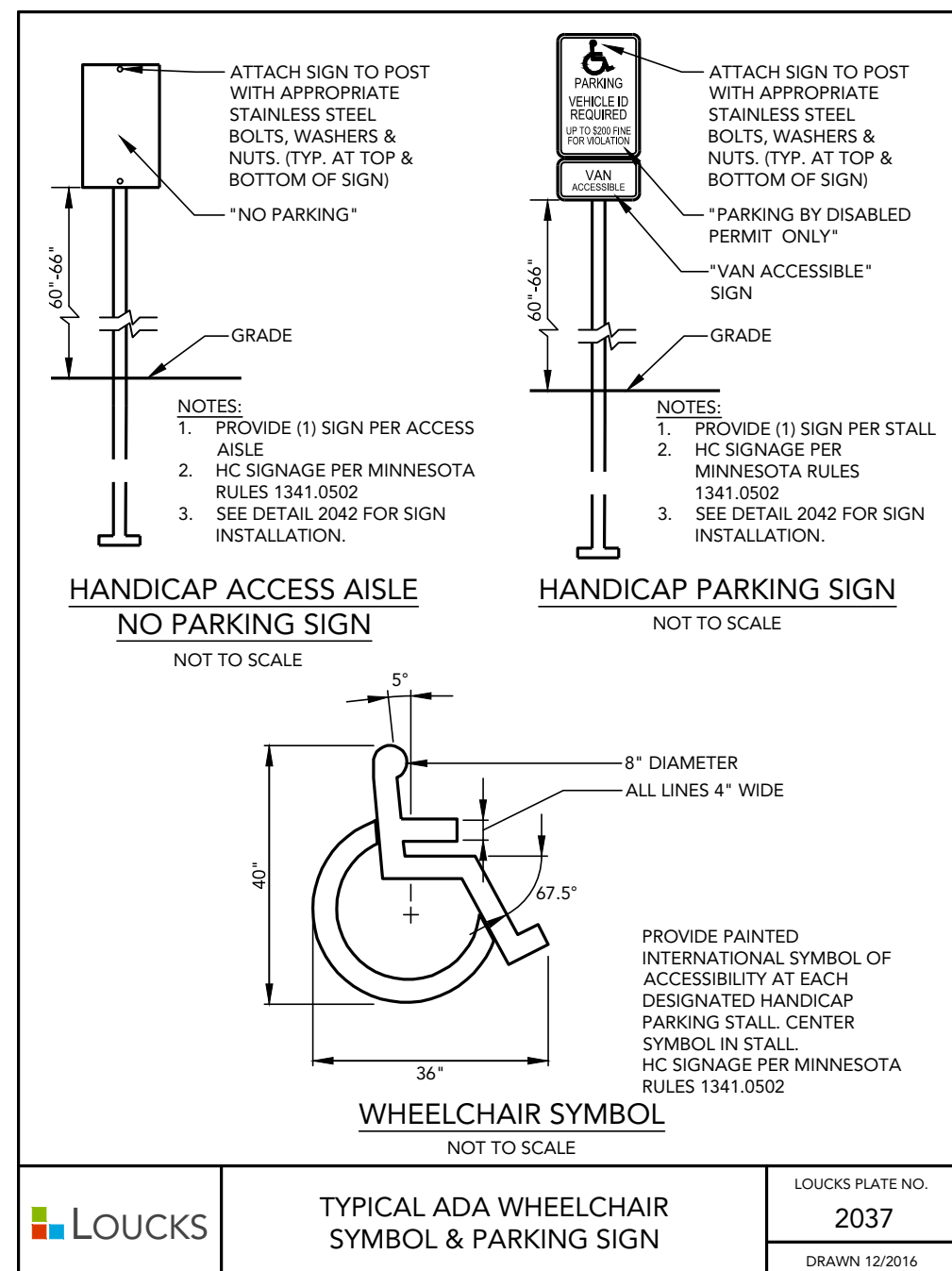
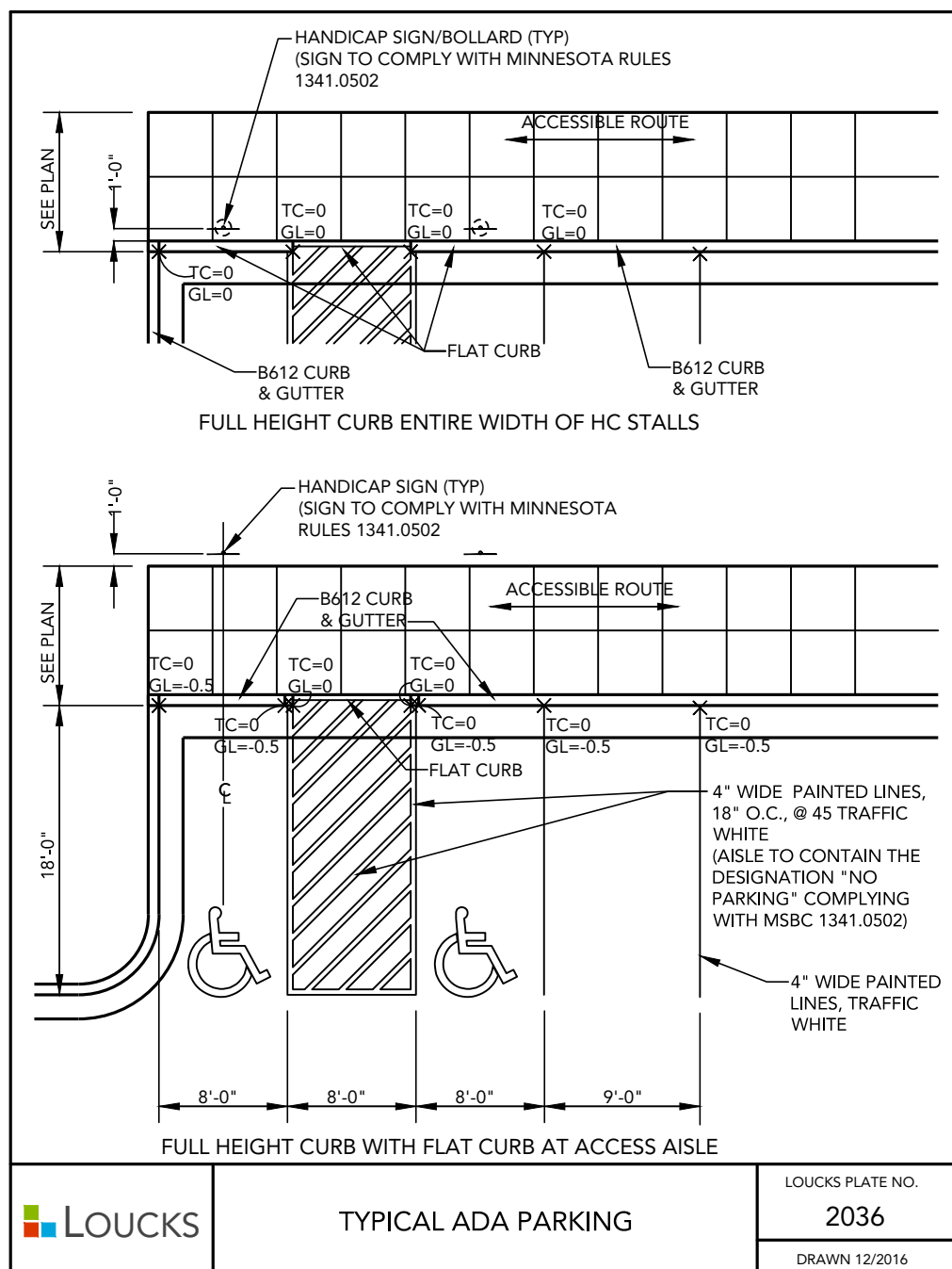
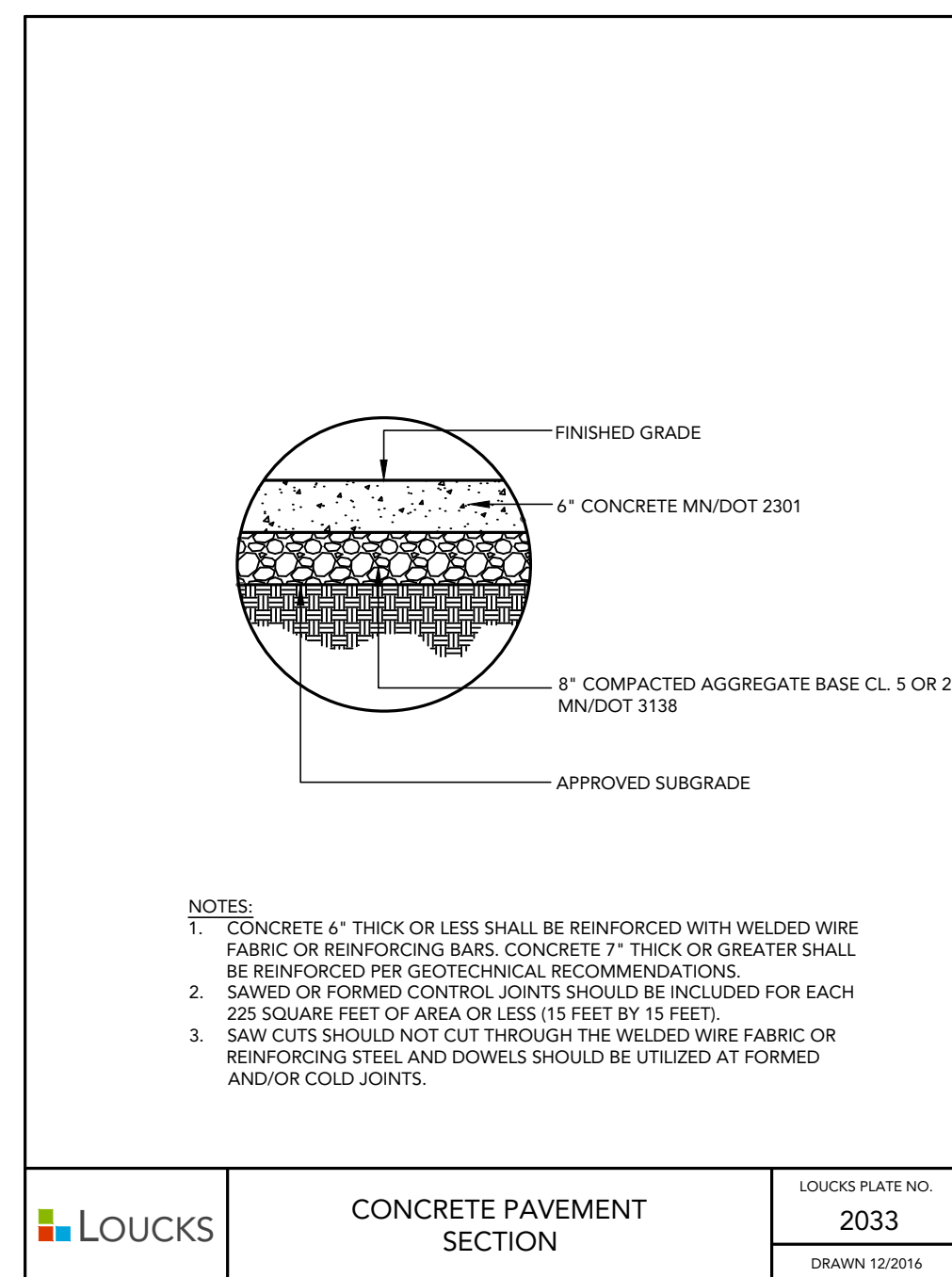
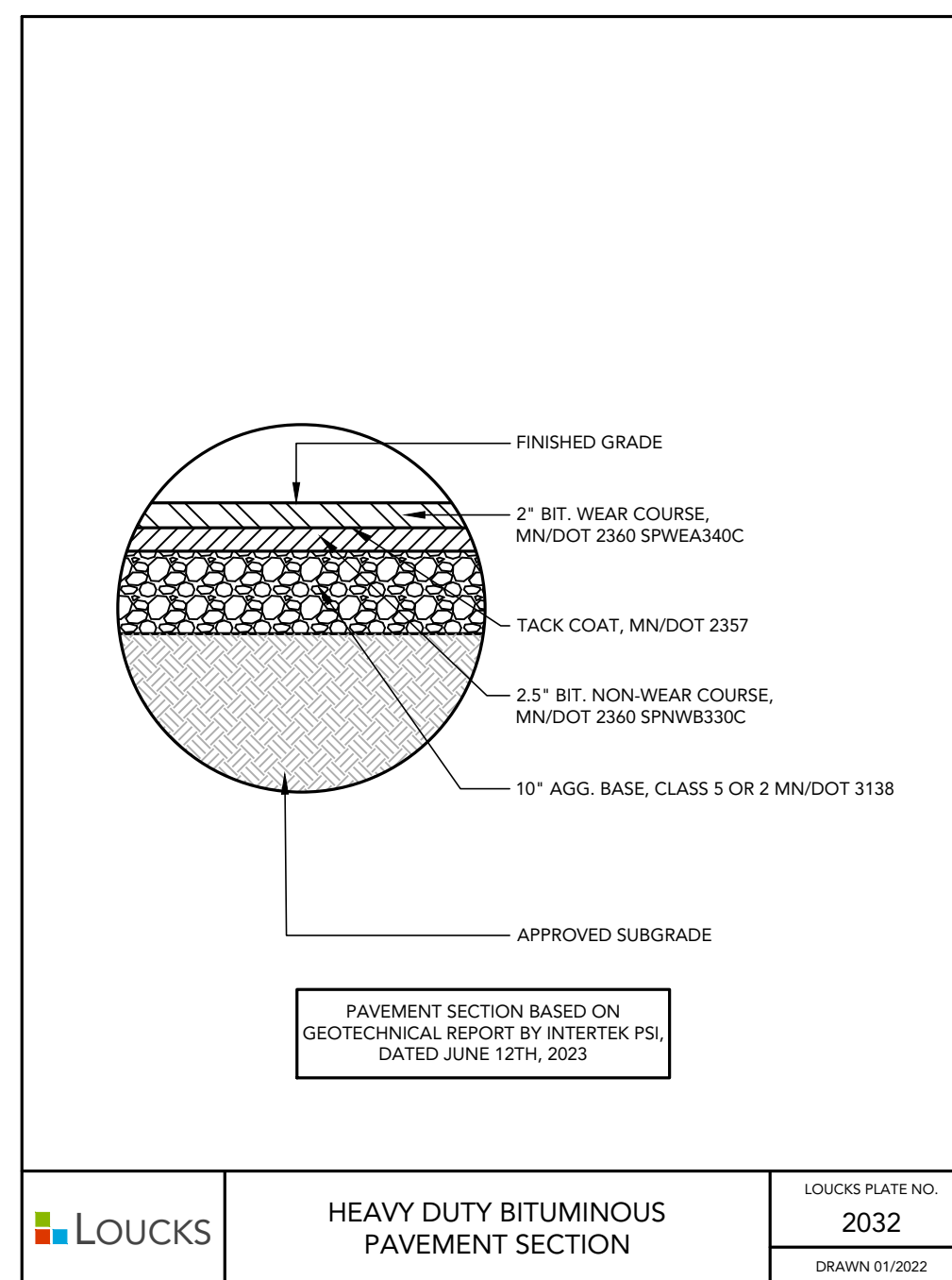
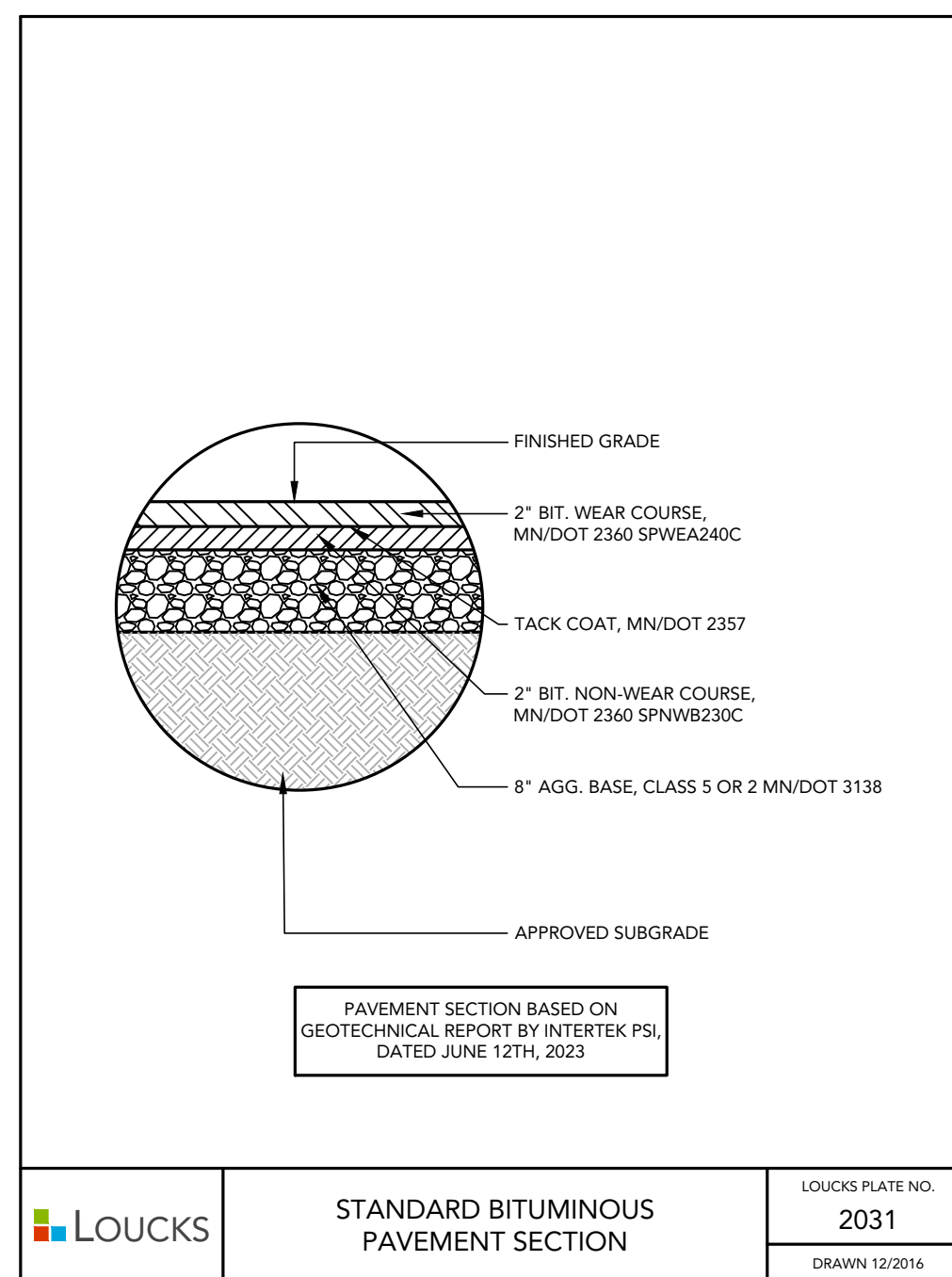
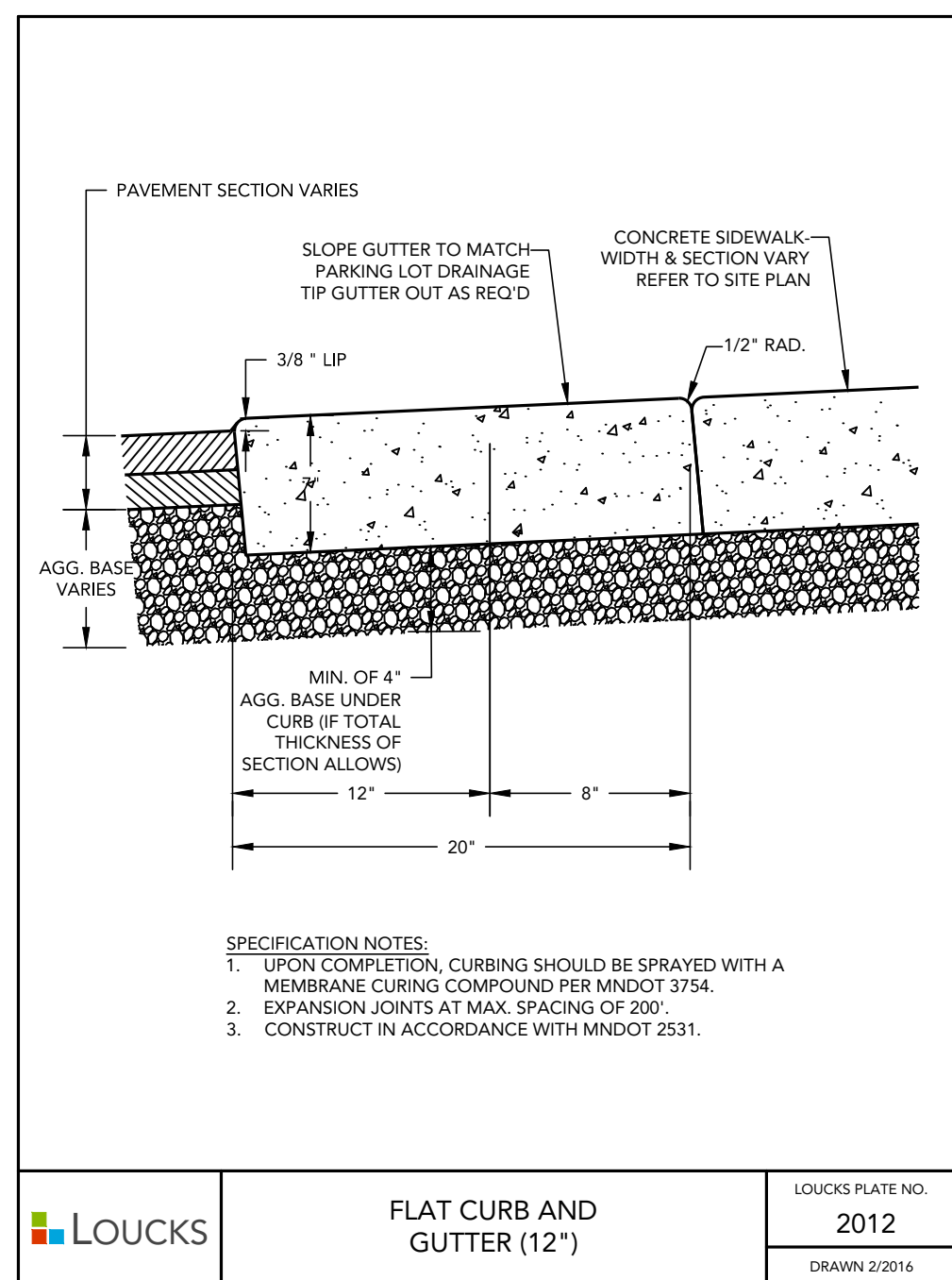
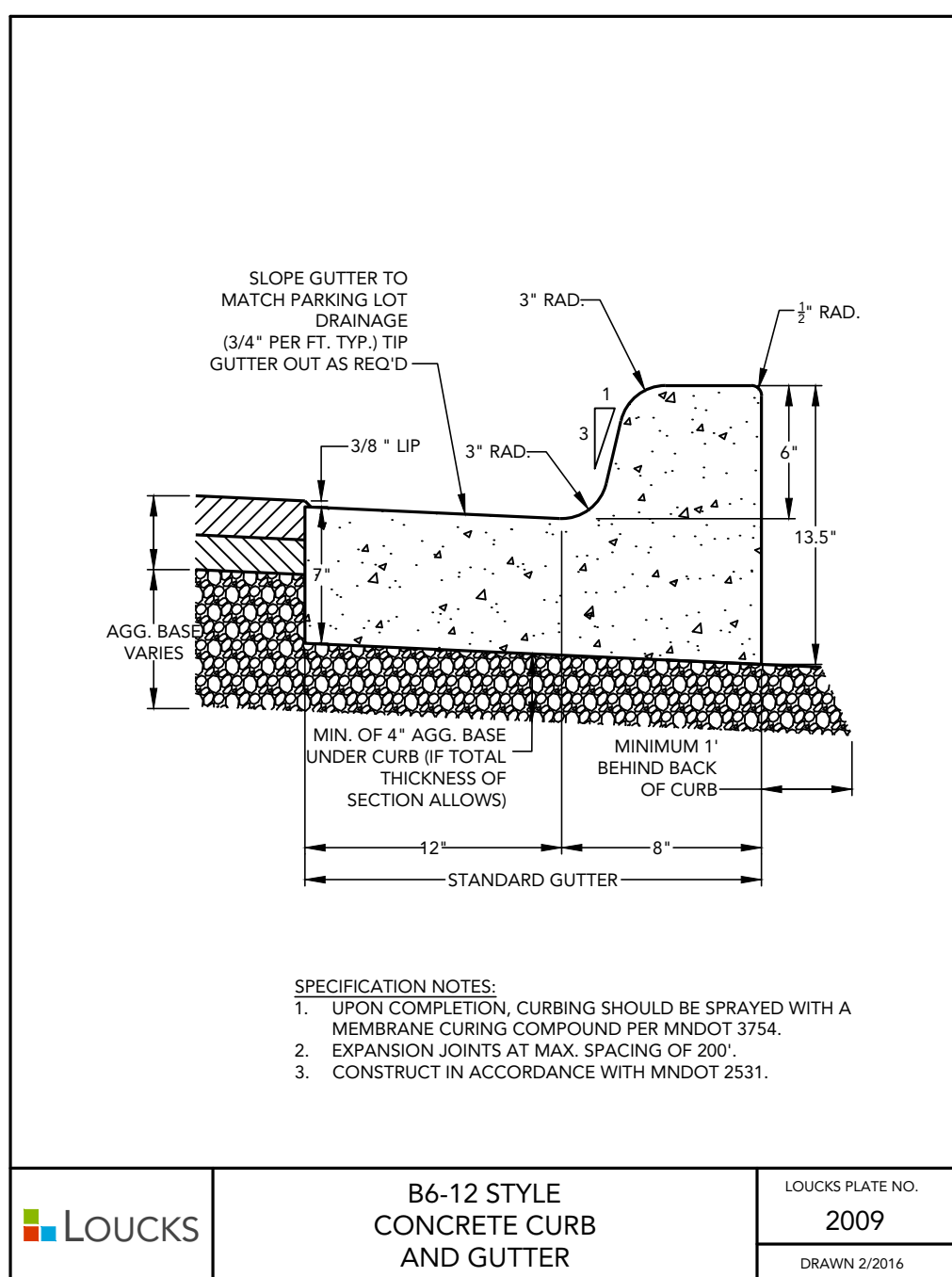
**QUALITY CONTROL**

Loucks Project No.	23024
Project Lead	TDC
Drawn By	TDG/DCR/MDC
Checked By	TDG
Review Date	

**SHEET INDEX**

C1.1	EXISTING CONDITIONS
C1.2	DEMOLITION PLAN
C2.1	SITE PLAN
C3.1	GRADING PLAN
C3.2	SWPPP
C3.3	SWPPP NOTES
C4.1	UTILITY PLAN STORM SEWER
C4.2	UTILITY PLAN SAN & WATER
C8.1	CIVIL DETAILS
C8.2	CIVIL DETAILS
L1.1	LANDSCAPE PLAN
L2.1	LANDSCAPE DETAILS

**CIVIL DETAILS**  
**C8.1**



CADD QUALIFICATION

CADD files prepared by the Consultant for this project are instruments of the Consultant's professional services for use solely with respect to this project. These CADD files shall not be used on other projects, for additions to this project, or for completion of this project by others without written approval by the Consultant. With the Consultant's approval, others may be permitted to obtain copies of the CADD files for information and reference only. All intentional or unintentional revisions, additions, or deletions to these CADD files shall be made at the full risk of that party making such revisions, additions or deletions and that party shall hold harmless and indemnify the Consultant from any and all responsibilities, claims, and liabilities.

SUBMITTAL/REVISIONS

CITY SUBMITTAL	4/17/2023
CITY RESUBMITTAL	5/10/2023
CITY RESUBMITTAL	6/8/2023
CITY RESUBMITTAL	6/26/2023

PROFESSIONAL SIGNATURE

I hereby certify that this plan, specification or report was prepared by me or under my direct supervision and that I am a duly Licensed Professional Engineer under the laws of the State of Minnesota.

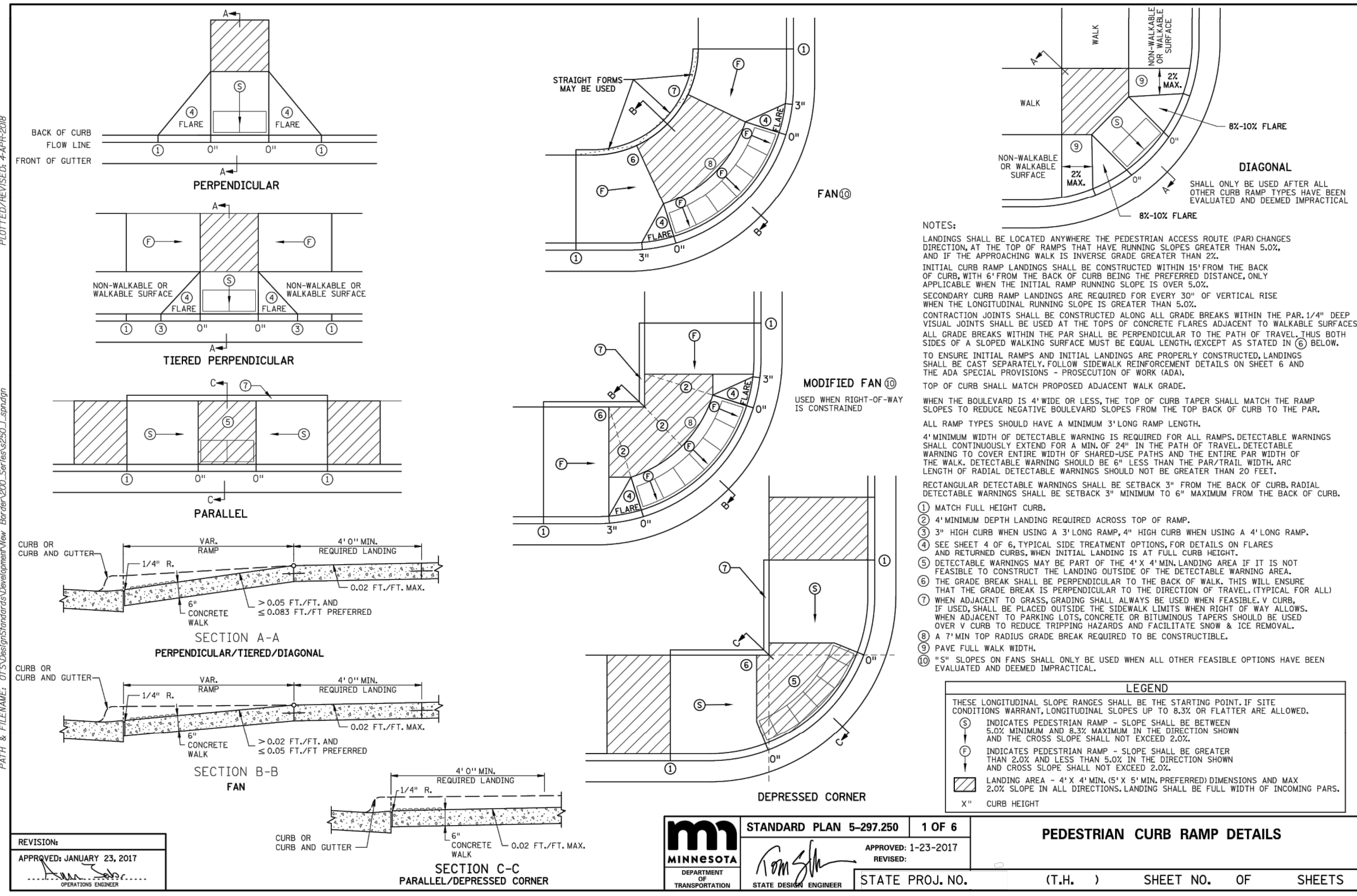
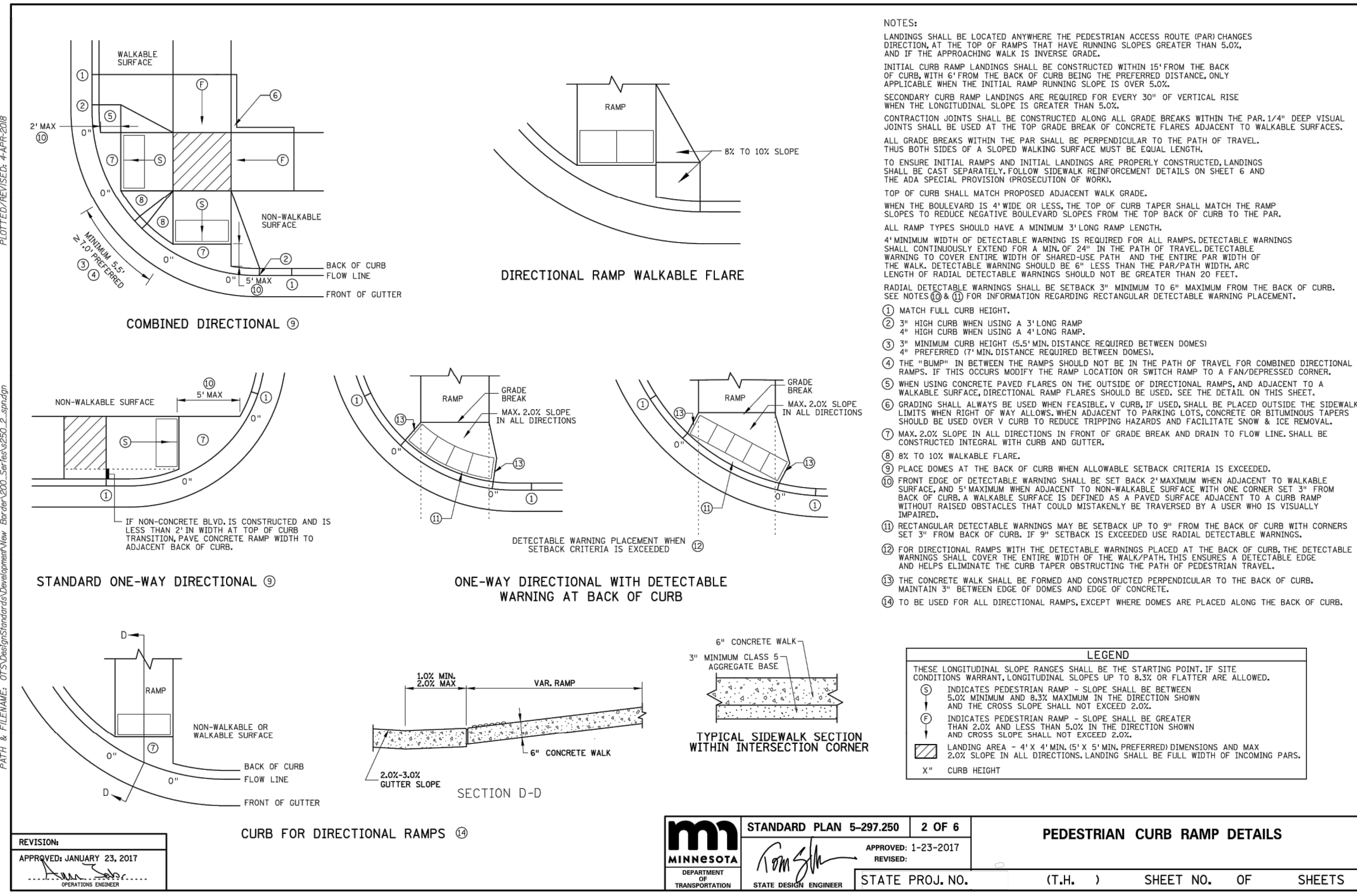
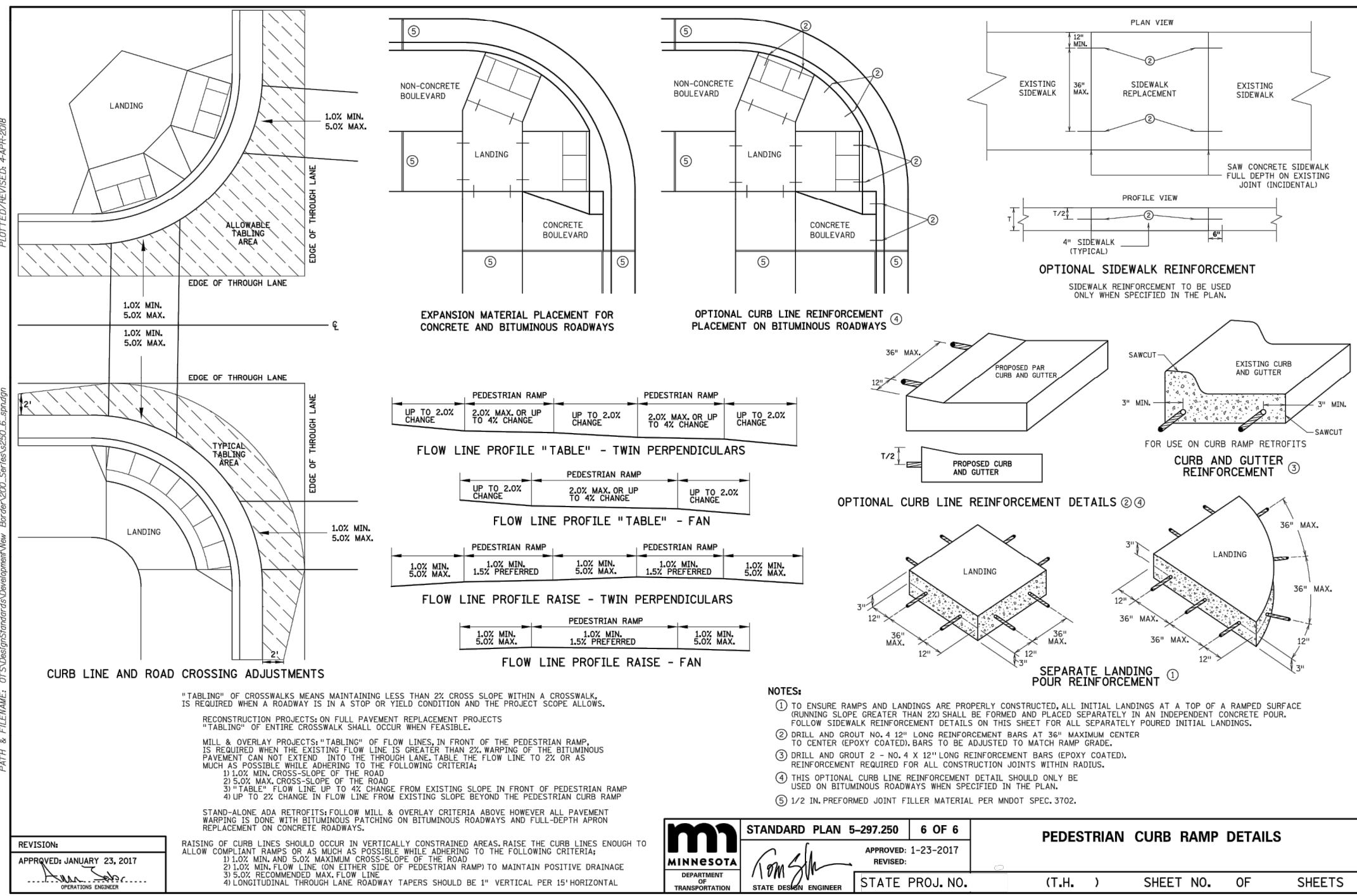
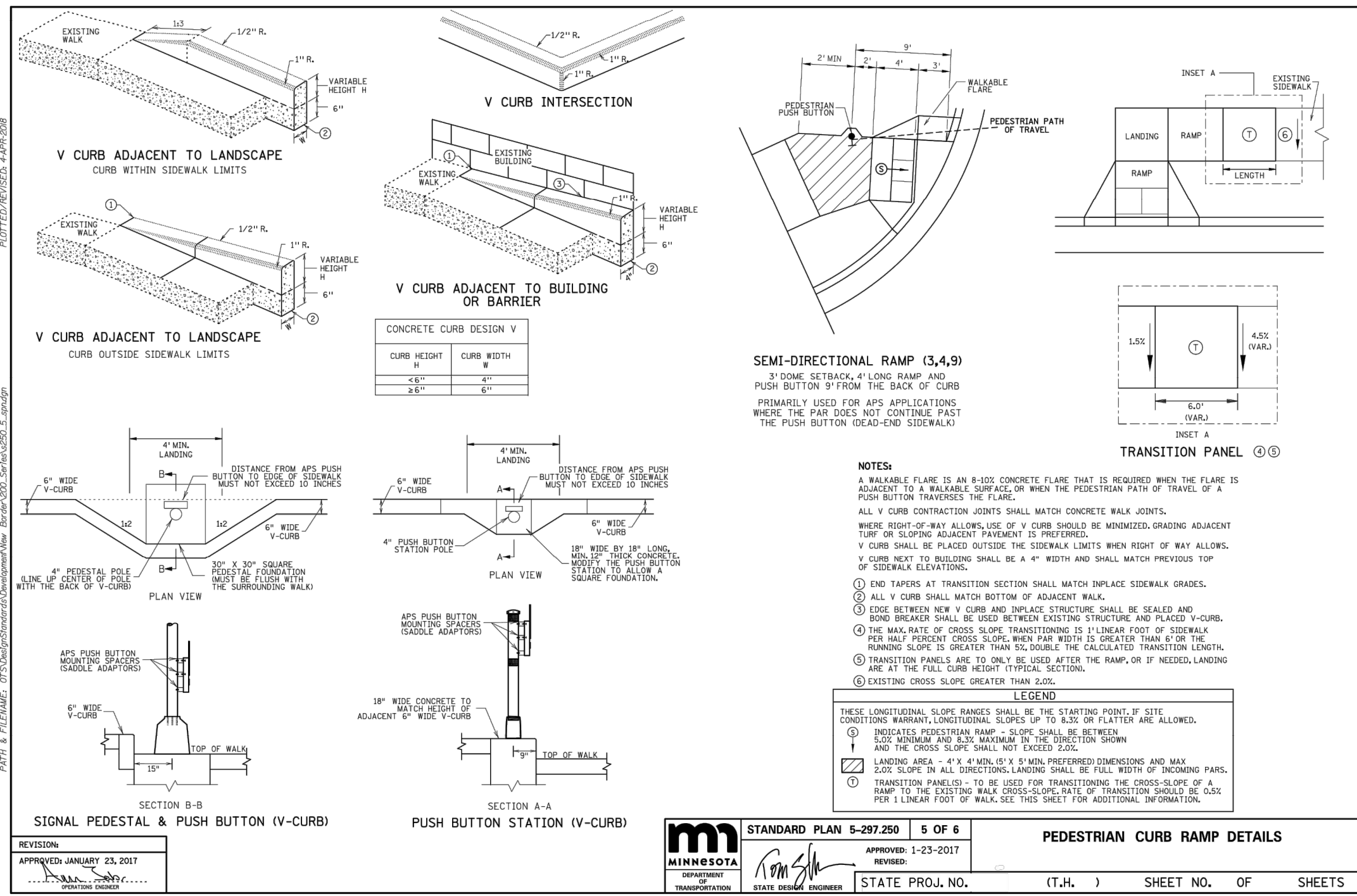
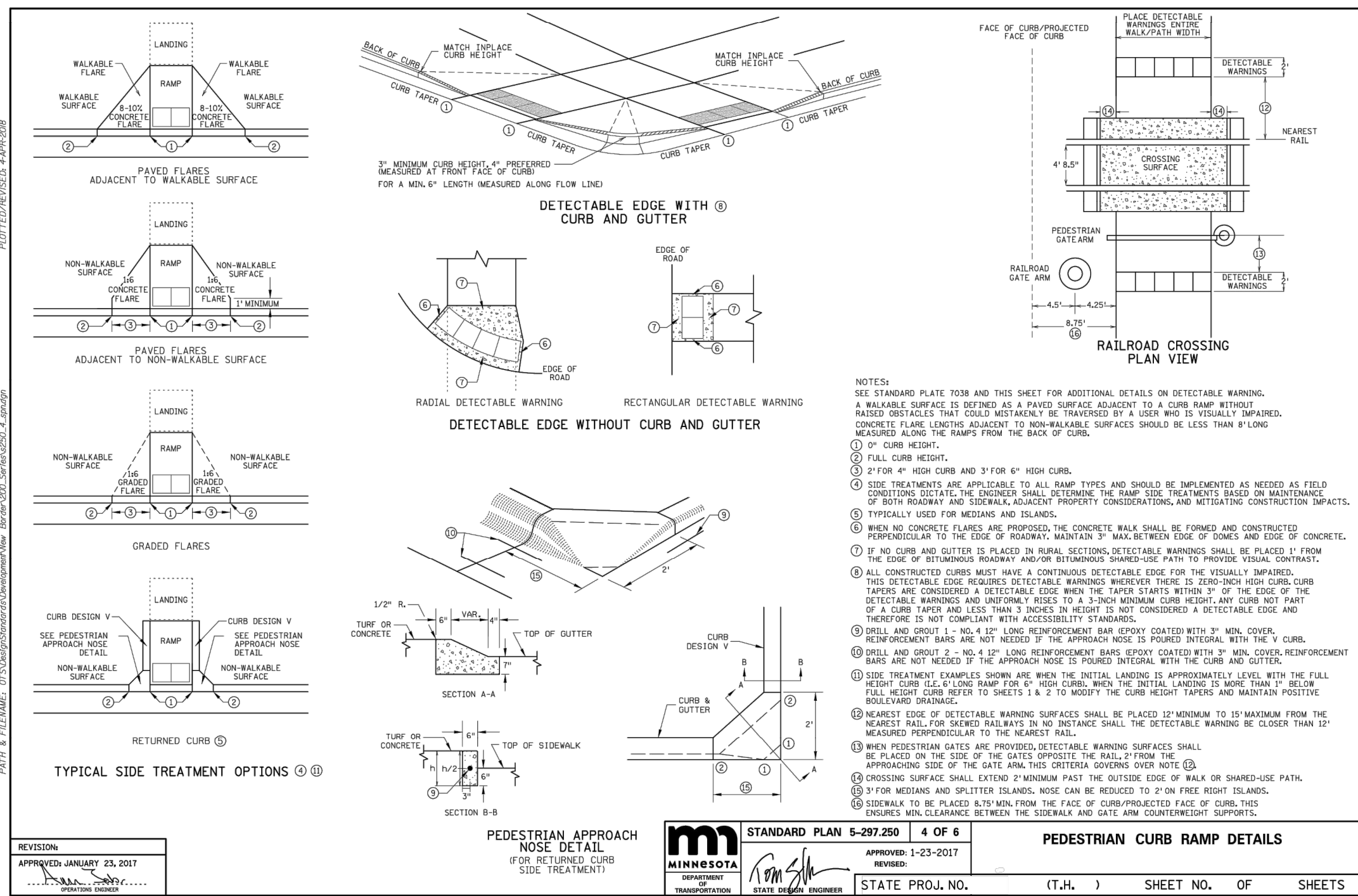
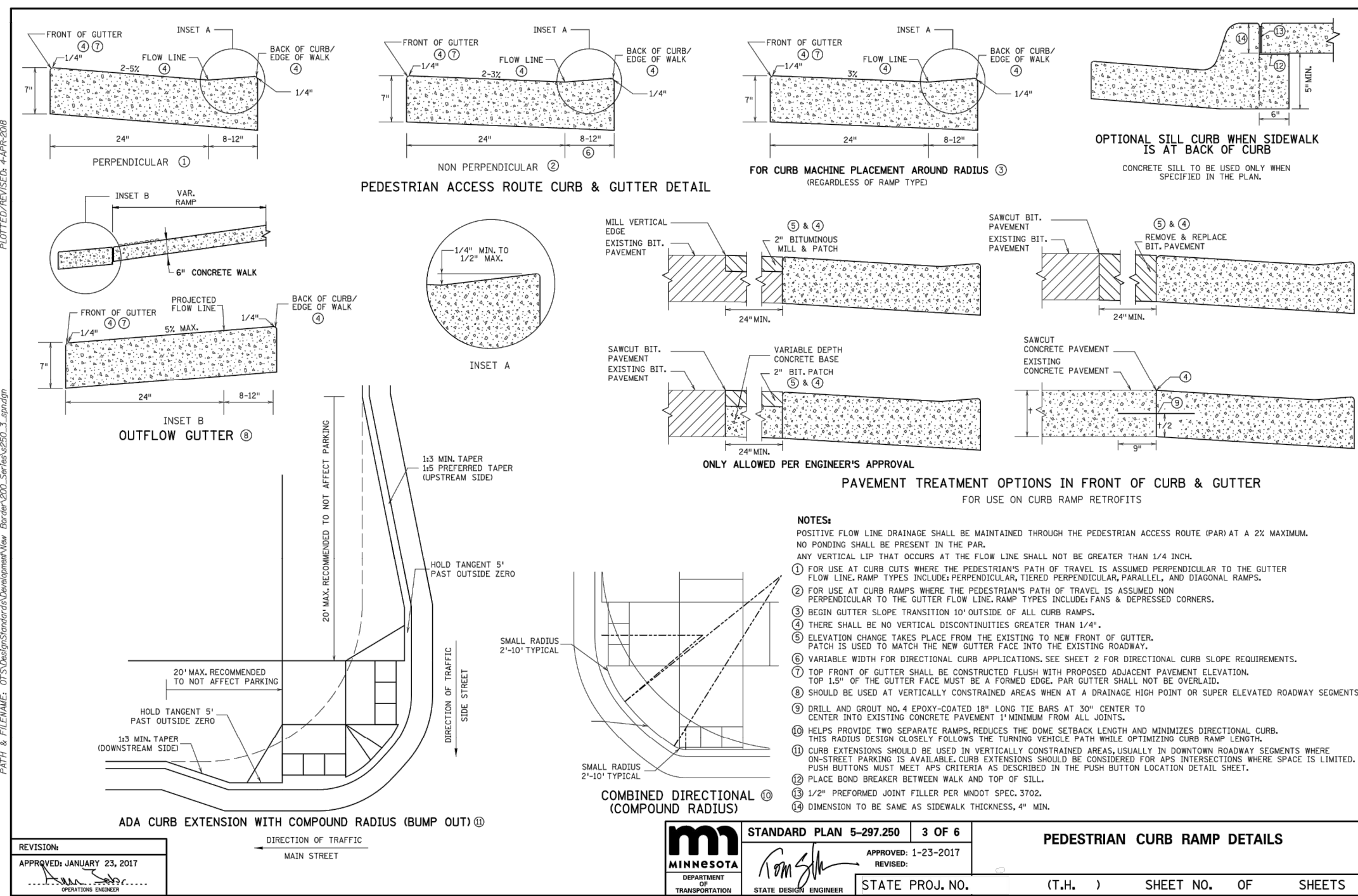
David D. Grigsby, PE  
License No. 53706  
Date

QUALITY CONTROL

Loecks Project No.	23024
Project Lead	TDG
Drawn By	TDG/DCR/MDC
Checked By	TDG
Review Date	

SHEET INDEX

C1.1	EXISTING CONDITIONS
C1.2	DEMOLITION PLAN
C2.1	SITE PLAN
C3.1	GRADING PLAN
C3.2	SWPPP
C3.3	SWPPP NOTES
C4.1	UTILITY PLAN STORM SEWER
C4.2	UTILITY PLAN SAN & WATER
C8.1	CIVIL DETAILS
C8.2	CIVIL DETAILS
L1.1	LANDSCAPE PLAN
L2.1	LANDSCAPE DETAILS



**CADD QUALIFICATION**

CADD files prepared by the Consultant for this project are instruments of the Consultant's professional services for use solely with respect to this project. These CADD files shall not be used on other projects, for additions to this project, or for completion of this project by others without written approval by the Consultant. With the Consultant's approval, others may be permitted to obtain copies of the CADD drawing files for information and reference only. All intentional or unintentional revisions, additions, or deletions to these CADD files shall be made at the full risk of that party making such revisions, additions or deletions and that party shall hold harmless and indemnify the Consultant from all responsibilities, claims, and liabilities.

**SUBMITTAL/REVISIONS**

CITY SUBMITTAL	4/17/2023
CITY RESUBMITTAL	5/10/2023
CITY RESUBMITTAL	6/8/2023
CITY RESUBMITTAL	6/26/2023

**PROFESSIONAL SIGNATURE**

I hereby certify that this plan, specification or report was prepared by me or under my direct supervision and that I am a duly Licensed Professional Engineer under the laws of the State of Minnesota.

\_\_\_\_\_  
David D. Grigsby, PE

License No. 53706  
Date

**QUALITY CONTROL**

Locucks Project No.	23024
Project Lead	TDC
Drawn By	TDC/DCR/MDG
Checked By	TDC
Review Date	

**SHEET INDEX**

C1.1	EXISTING CONDITIONS
C1.2	DEMOLITION PLAN
C2.1	SITE PLAN
C3.1	GRADING PLAN
C3.2	SWPPP
C3.3	SWPPP NOTES
C4.1	UTILITY PLAN STORM SERV
C4.2	UTILITY PLAN SAN & WATER
C8.1	CIVIL DETAILS
C8.2	CIVIL DETAILS
L1.1	LANDSCAPE PLAN
L2.1	LANDSCAPE DETAILS

