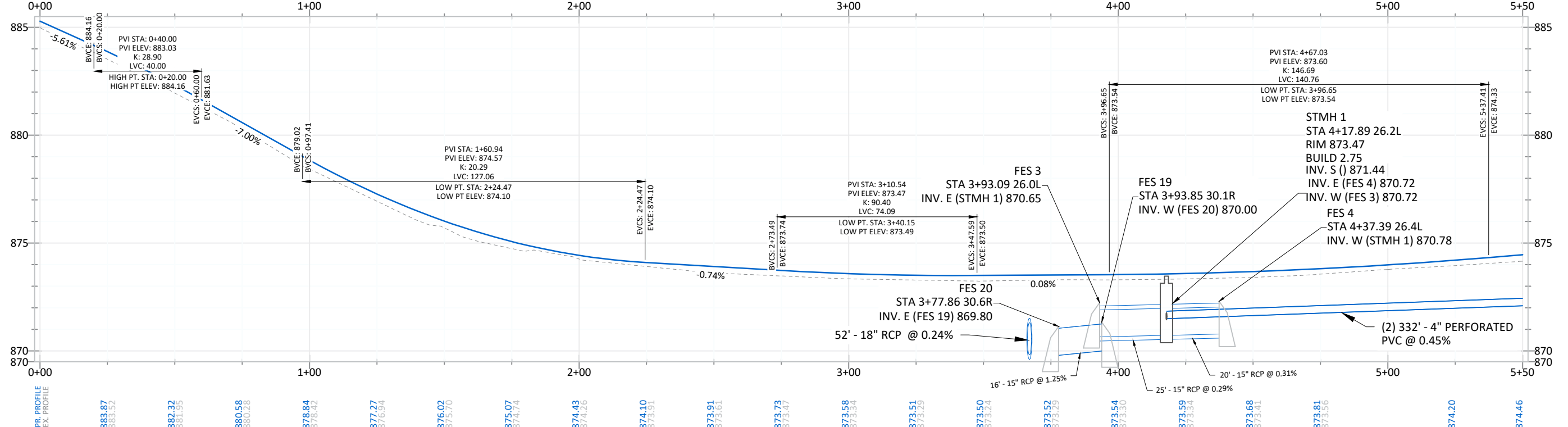


- NOTE:**
1. ALL RADII TO BE CONSTRUCTED AT 30' UNLESS OTHERWISE NOTED.
 2. TYPICAL SECTION SEE SHEET 04.
 3. RESTORATION AREAS ARE SHOWN IN A GENERAL MANNER ONLY.
 4. RESTORE ALL DISTURBED AREAS WITH 4" TOPSOIL, HYDROSEED, MNDOT SEED MIX 25-151, AND HYDRAULIC MATRIX TYPE MULCH UNLESS OTHERWISE NOTED.

LEGEND

	BIT PAVEMENT - FULL SECTION		NEW DRIVEWAY - CONCRETE		PR. DRAIN TILE		RIPRAP CLASS III
	NEW DRIVEWAY - GRAVEL		NEW DRIVEWAY - BITUMINOUS		PR. STORM SEWER		SEEDING AREA
	PR. FLARED END SECTION						

Profile View of 164th Ave CL



DATE	REVISION
08/07/23	ADDED CULVERT, DITCH GRADING TO 5664 164TH AVE

I hereby certify that this plan, specification, or report was prepared by me or under my direct supervision and that I am a duly Licensed Professional Engineer under the laws of the State of Minnesota

Joe Feriancek
 JOE FERIANCEK
 Date 05/04/23 Lic. No. 57095

DESIGNED BY:	LWC	DATE:	05/04/23
DRAWN BY:	LWC	FILE:	23-05
CHECKED BY:	JJF		

CITY OF RAMSEY
 7550 SUNWOOD DRIVE
 RAMSEY, MN 55303
 (763) 427-1410 FAX (763) 433-9898

23-05 STREET IMPROVEMENTS

BARTHEL'S RUM RIVER ACRES 2ND RECONSTRUCTION
 CITY PROJECT NO. 23-05
 CITY OF RAMSEY, MINNESOTA