

LEGEND

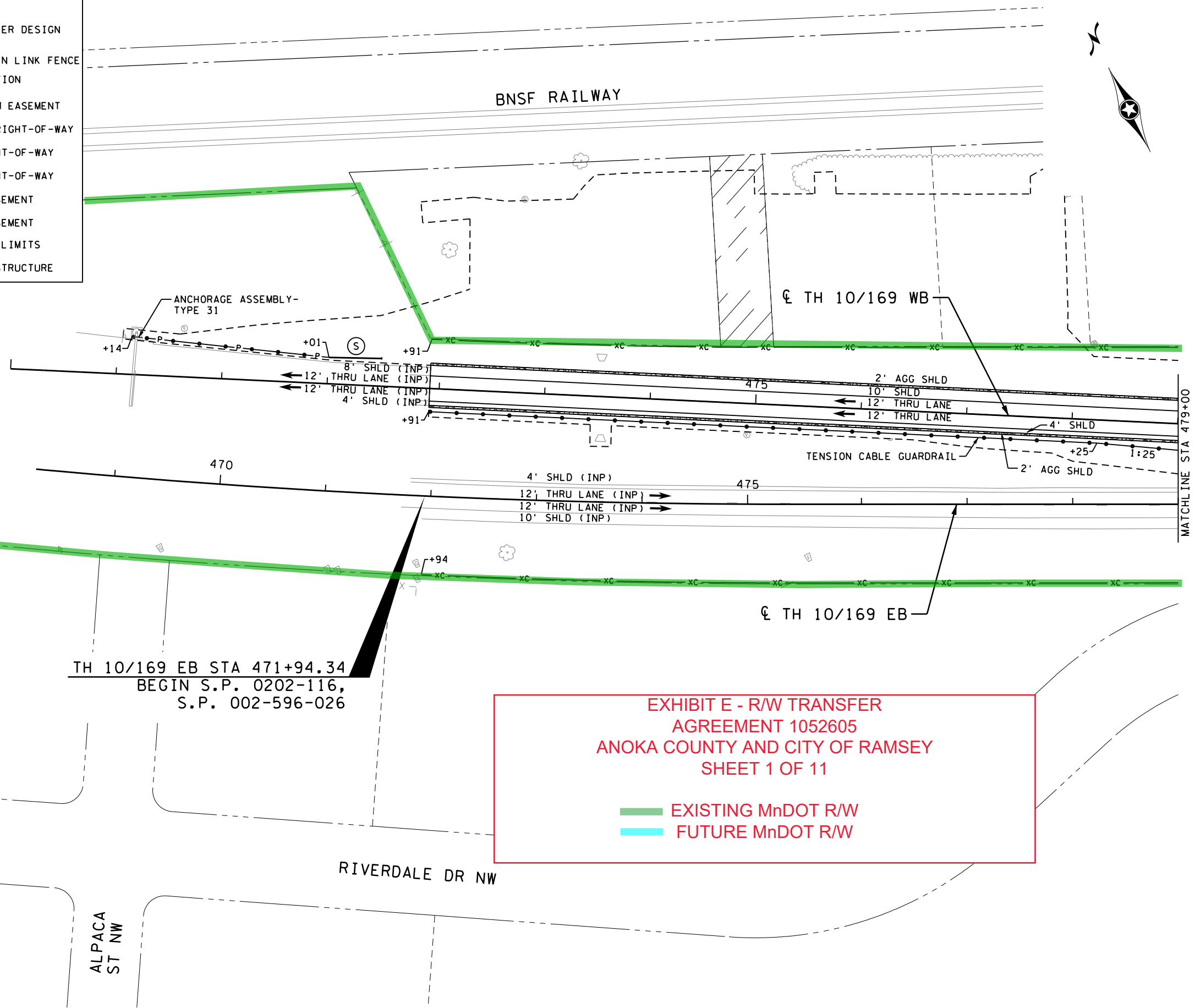
	4" CONCRETE WALK		TRAFFIC FLOW
	6" CONCRETE WALK		TRAFFIC BARRIER DESIGN TYPE 31
	CONCRETE CURB RAMP WALK		PROPOSED CHAIN LINK FENCE
	6" CONCRETE DRIVEWAY PAVEMENT		PAVEMENT SECTION TRANSITION
	7" CONCRETE WALK (TRUCK APRON)		EXISTING PERM EASEMENT
	8" CONCRETE DRIVEWAY PAVEMENT		EXISTING RR RIGHT-OF-WAY
	BITUMINOUS COMMERCIAL DRIVEWAY/PARKING LOT PAVEMENT		EXISTING RIGHT-OF-WAY
	3" BITUMINOUS WALK		PROPOSED RIGHT-OF-WAY
	AGGREGATE SURFACING (CV) CLASS 2		TEMPORARY EASEMENT
			PERMANENT EASEMENT
			CONSTRUCTION LIMITS
			STORM SEWER STRUCTURE

CONSTRUCTION NOTES:

1. SEE INTERSECTION DETAIL SHEETS FOR INTERSECTION, SIDEWALK, DRIVEWAY AND PEDESTRIAN RAMP DETAILS.
2. SEE ACCESS ROAD PLAN FOR ACCESS ROAD ALIGNMENTS, PROFILES, AND ADDITIONAL DESIGN INFORMATION.
3. SEE TURF ESTABLISHMENT, EROSION CONTROL, AND SUPERELEVATION PLAN FOR SUPERELEVATION AND PAVEMENT CROSS SLOPE TRANSITIONS.

SHEET NOTE:

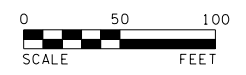
(S) END TREATMENT - TANGENT TERMINAL, MNDOT STANDARD PLAN (5-297.612).



**EXHIBIT E - R/W TRANSFER**  
**AGREEMENT 1052605**  
**ANOKA COUNTY AND CITY OF RAMSEY**  
**SHEET 1 OF 11**

EXISTING MnDOT R/W  
 FUTURE MnDOT R/W

bmi.tbl  
 pdf-B and W.pltcfgr  
 12:37:00 PM  
 tomdu  
 5/3/2023



**BOLTON & MENK**

12224 NICOLLET AVENUE  
 BURNSVILLE, MINNESOTA 55337  
 Phone: (952) 890-0509  
 Email: Burnsville@bolton-menk.com  
 www.bolton-menk.com

REV.	BY	DATE

I HEREBY CERTIFY THAT THIS PLAN, SPECIFICATION, OR REPORT WAS PREPARED BY ME OR UNDER MY DIRECT SUPERVISION AND THAT I AM A DULY LICENSED PROFESSIONAL ENGINEER UNDER THE LAWS OF THE STATE OF MINNESOTA.

*Benjamin A. Ulrich*  
 BENJAMIN A. ULRICH  
 LIC. NO. 59444 DATE 03-08-2023

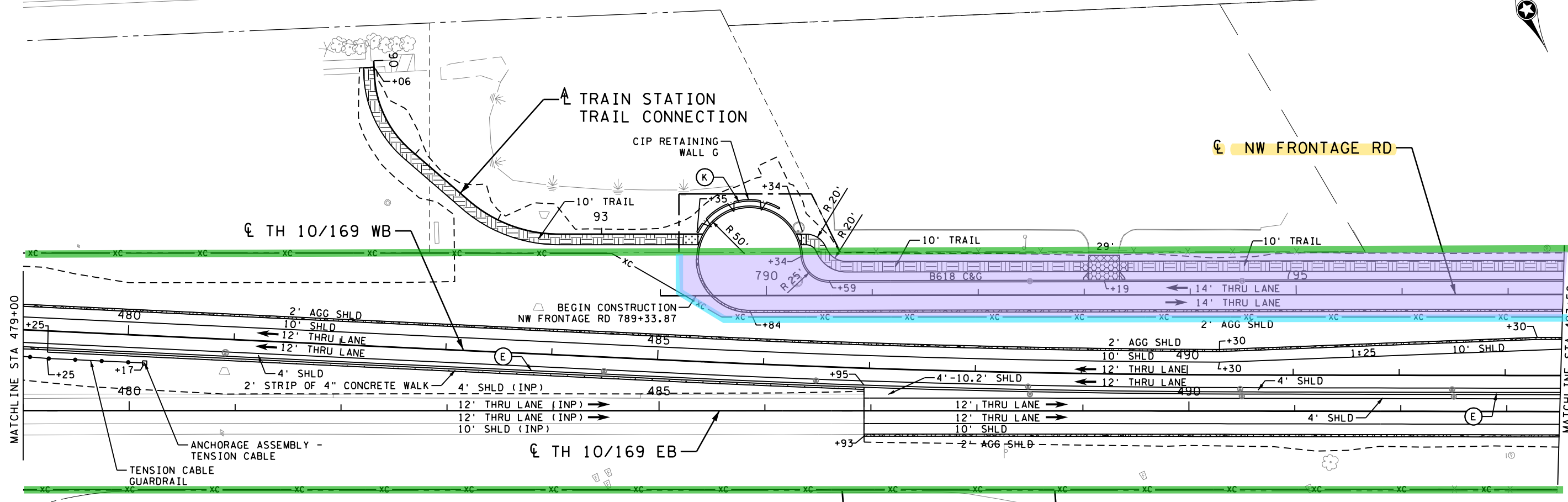
DESIGNED BAU	S.P. 0202-116 (TH10), S.P. 002-596-026, S.P. 002-656-001, S.P. 002-657-003, S.P. 199-113-003, S.P. 199-115-006
DRAWN TWB	
CHECKED BAU	

TH 10/169 IMPROVEMENTS

CONSTRUCTION PLAN

SHEET  
231  
OF  
685

BNSF RAILWAY



TH 10/169 WB

NW FRONTAGE RD

TH 10/169 EB

RIVERDALE DR NW

**EXHIBIT E - R/W TRANSFER AGREEMENT 1052605 ANOKA COUNTY AND CITY OF RAMSEY SHEET 2 OF 11**

- EXISTING MnDOT R/W
- FUTURE MnDOT R/W
- PROPERTY TRANSFER FROM MnDOT TO LOCALS

**LEGEND**

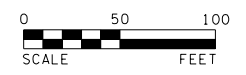
	4" CONCRETE WALK		TRAFFIC FLOW
	6" CONCRETE WALK		TRAFFIC BARRIER DESIGN TYPE 31
	CONCRETE CURB RAMP WALK		PROPOSED CHAIN LINK FENCE
	6" CONCRETE DRIVEWAY PAVEMENT		PAVEMENT SECTION TRANSITION
	7" CONCRETE WALK (TRUCK APRON)		EXISTING PERM EASEMENT
	8" CONCRETE DRIVEWAY PAVEMENT		EXISTING RR RIGHT-OF-WAY
	BITUMINOUS COMMERCIAL DRIVEWAY/PARKING LOT PAVEMENT		EXISTING RIGHT-OF-WAY
	3" BITUMINOUS WALK		PROPOSED RIGHT-OF-WAY
	AGGREGATE SURFACING (CV) CLASS 2		TEMPORARY EASEMENT
			PERMANENT EASEMENT
			CONSTRUCTION LIMITS
			STORM SEWER STRUCTURE

**CONSTRUCTION NOTES:**

- SEE INTERSECTION DETAIL SHEETS FOR INTERSECTION, SIDEWALK, DRIVEWAY AND PEDESTRIAN RAMP DETAILS.
- SEE ACCESS ROAD PLAN FOR ACCESS ROAD ALIGNMENTS, PROFILES, AND ADDITIONAL DESIGN INFORMATION.
- SEE TURF ESTABLISHMENT, EROSION CONTROL, AND SUPERELEVATION PLAN FOR SUPERELEVATION AND PAVEMENT CROSS SLOPE TRANSITIONS.

**SHEET NOTES:**

- (E) CONCRETE MEDIAN BARRIER DESIGN SINGLE SLOPE TYPE 42 A, MNDOT STANDARD PLAN (5-297.681).
- (K) 36" TYPE P-1, (TL-2) BARRIER CONCRETE (3S52) & ORNAMENTAL METAL RAILING TYPE SPECIAL PC (SEE MSE RETAINING WALL PLAN FOR DETAILS).



12224 NICOLLET AVENUE  
BURNSVILLE, MINNESOTA 55337  
Phone: (952) 890-0509  
Email: Burnsville@bolton-menk.com  
www.bolton-menk.com

REV.	BY	DATE

I HEREBY CERTIFY THAT THIS PLAN, SPECIFICATION, OR REPORT WAS PREPARED BY ME OR UNDER MY DIRECT SUPERVISION AND THAT I AM A DULY LICENSED PROFESSIONAL ENGINEER UNDER THE LAWS OF THE STATE OF MINNESOTA.

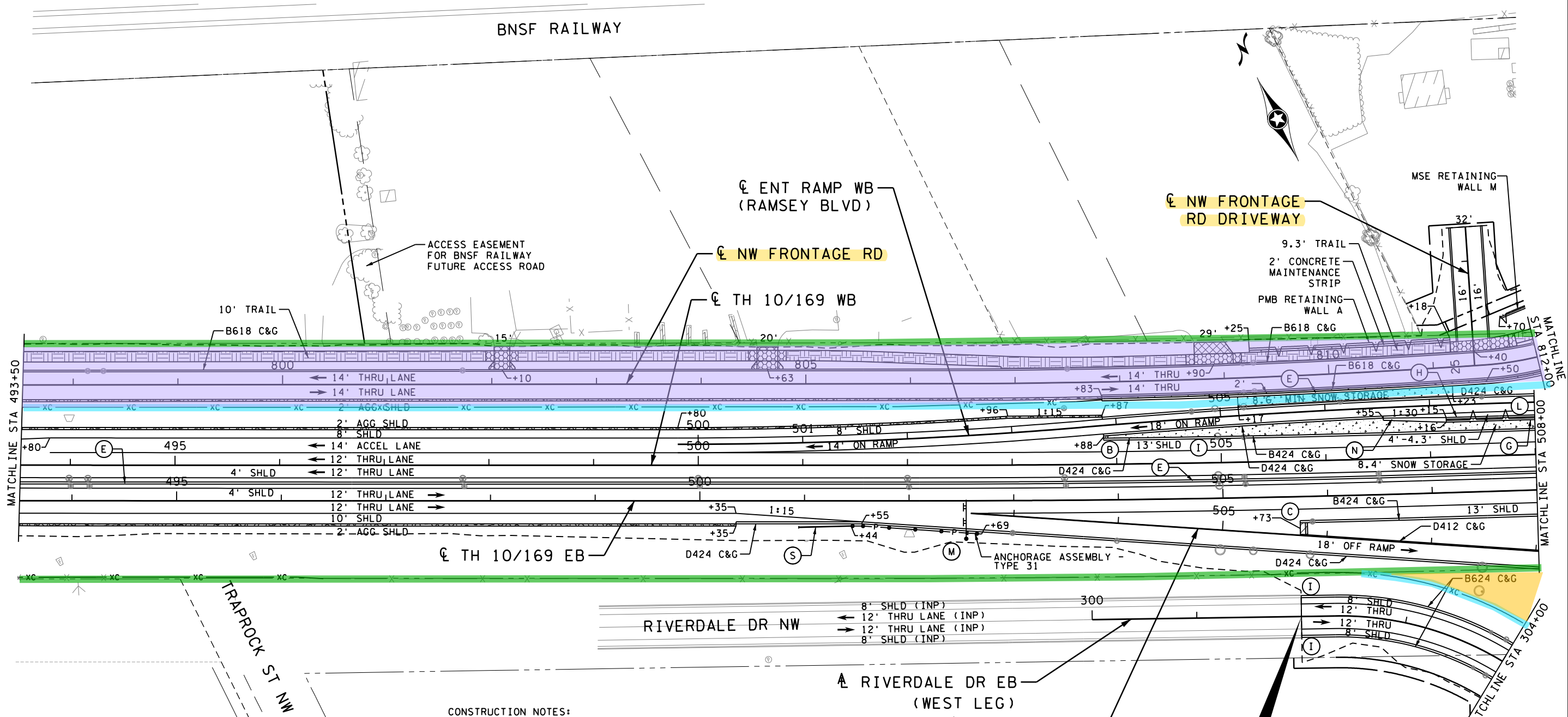
*Benjamin A. Ulrich*  
BENJAMIN A. ULRICH  
LIC. NO. 59444 DATE 03-08-2023

DESIGNED  
BAU  
DRAWN  
TWB  
CHECKED  
BAU

S.P. 0202-116 (TH10), S.P. 002-596-026, S.P. 002-656-001, S.P. 002-657-003, S.P. 199-113-003, S.P. 199-115-006  
TH 10/169 IMPROVEMENTS  
CONSTRUCTION PLAN

SHEET  
232  
OF  
685

bmi,tbi  
pdf-B and W.pltcfq  
6:27:28 PM  
denaki  
6/1/2023



**LEGEND**

	4" CONCRETE WALK		TRAFFIC FLOW
	6" CONCRETE WALK		TRAFFIC BARRIER DESIGN TYPE 31
	CONCRETE CURB RAMP WALK		PROPOSED CHAIN LINK FENCE
	6" CONCRETE DRIVEWAY PAVEMENT		PAVEMENT SECTION TRANSITION
	7" CONCRETE WALK (TRUCK APRON)		EXISTING PERM EASEMENT
	8" CONCRETE DRIVEWAY PAVEMENT		EXISTING RR RIGHT-OF-WAY
	BITUMINOUS COMMERCIAL DRIVEWAY/PARKING LOT PAVEMENT		EXISTING RIGHT-OF-WAY
	3" BITUMINOUS WALK		PROPOSED RIGHT-OF-WAY
	AGGREGATE SURFACING (CV) CLASS 2		TEMPORARY EASEMENT
			PERMANENT EASEMENT
			CONSTRUCTION LIMITS
			STORM SEWER STRUCTURE

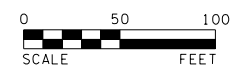
- CONSTRUCTION NOTES:**
- SEE INTERSECTION DETAIL SHEETS FOR INTERSECTION, SIDEWALK, DRIVEWAY AND PEDESTRIAN RAMP DETAILS.
  - SEE ACCESS ROAD PLAN FOR AND ADDITIONAL DESIGN INFO.
  - SEE TURF ESTABLISHMENT, PLAN FOR SUPERELEVATION.

**EXHIBIT E - R/W TRANSFER AGREEMENT 1052605 ANOKA COUNTY AND CITY OF RAMSEY SHEET 3 OF 11**

EXISTING MnDOT R/W  
 FUTURE MnDOT R/W  
 PROPERTY TRANSFER FROM LOCALS TO MnDOT  
 PROPERTY TRANSFER FROM MnDOT TO LOCALS

- REGIONAL PARK TRAIL**
- (I) 10' CURB TYPE TRANSITION.
  - (L) MOMENT SLAB (SEE MSE RETAINING WALL PLAN FOR DETAILS).
  - (M) OVERHEAD SIGN LOCATION (SEE SIGNING PLANS FOR PANEL AND STRUCTURAL DETAILS).
  - (N) SEE MSE RETAINING WALL DETAILS FOR BARRIER/WALL TRANSITION.
  - (S) END TREATMENT - TANGENT TERMINAL, MNDOT STANDARD PLAN (5-297.612).

bmi,tbi  
pdf-B and W\p\itc\fg  
12:37:03 PM  
tombu  
5/3/2023



12224 NICOLLET AVENUE  
BURNSVILLE, MINNESOTA 55337  
Phone: (952) 890-0509  
Email: Burns@bolton-menk.com  
www.bolton-menk.com

REV.	BY	DATE

I HEREBY CERTIFY THAT THIS PLAN, SPECIFICATION, OR REPORT WAS PREPARED BY ME OR UNDER MY DIRECT SUPERVISION AND THAT I AM A DULY LICENSED PROFESSIONAL ENGINEER UNDER THE LAWS OF THE STATE OF MINNESOTA.

*Benjamin A. Ulrich*  
BENJAMIN A. ULRICH  
LIC. NO. 59444 DATE 03-08-2023

DESIGNED  
BAU  
DRAWN  
TWE  
CHECKED  
BAU

S.P. 0202-116 (TH10), S.P. 002-596-026, S.P. 002-656-001, S.P. 002-657-003, S.P. 199-113-003, S.P. 199-115-006  
TH 10/169 IMPROVEMENTS  
CONSTRUCTION PLAN

SHEET  
233  
OF  
685

SHEET NOTES:

- (A) CONCRETE MEDIAN NOSE STANDARD PLATE 7113. (PAID FOR AS 6" CONCRETE WALK)
- (C) CONCRETE EXIT NOSE, SEE MISCELLANEOUS DETAILS. (PAID FOR AS 6" CONCRETE WALK)
- (D) 36" TYPE P-1, (TL-2) BARRIER CONCRETE (3S52) (SEE MSE RETAINING WALL PLAN FOR DETAILS).
- (E) CONCRETE MEDIAN BARRIER DESIGN SINGLE SLOPE TYPE 42 A, MNDOT STANDARD PLAN (5-297.681).
- (G) CONCRETE MEDIAN BARRIER SPECIAL (SEE MSE RETAINING WALL PLAN FOR DETAILS).
- (H) 36" TYPE P-4, (TL-4) BARRIER CONCRETE (3S52) (SEE MSE RETAINING WALL PLAN FOR DETAILS).

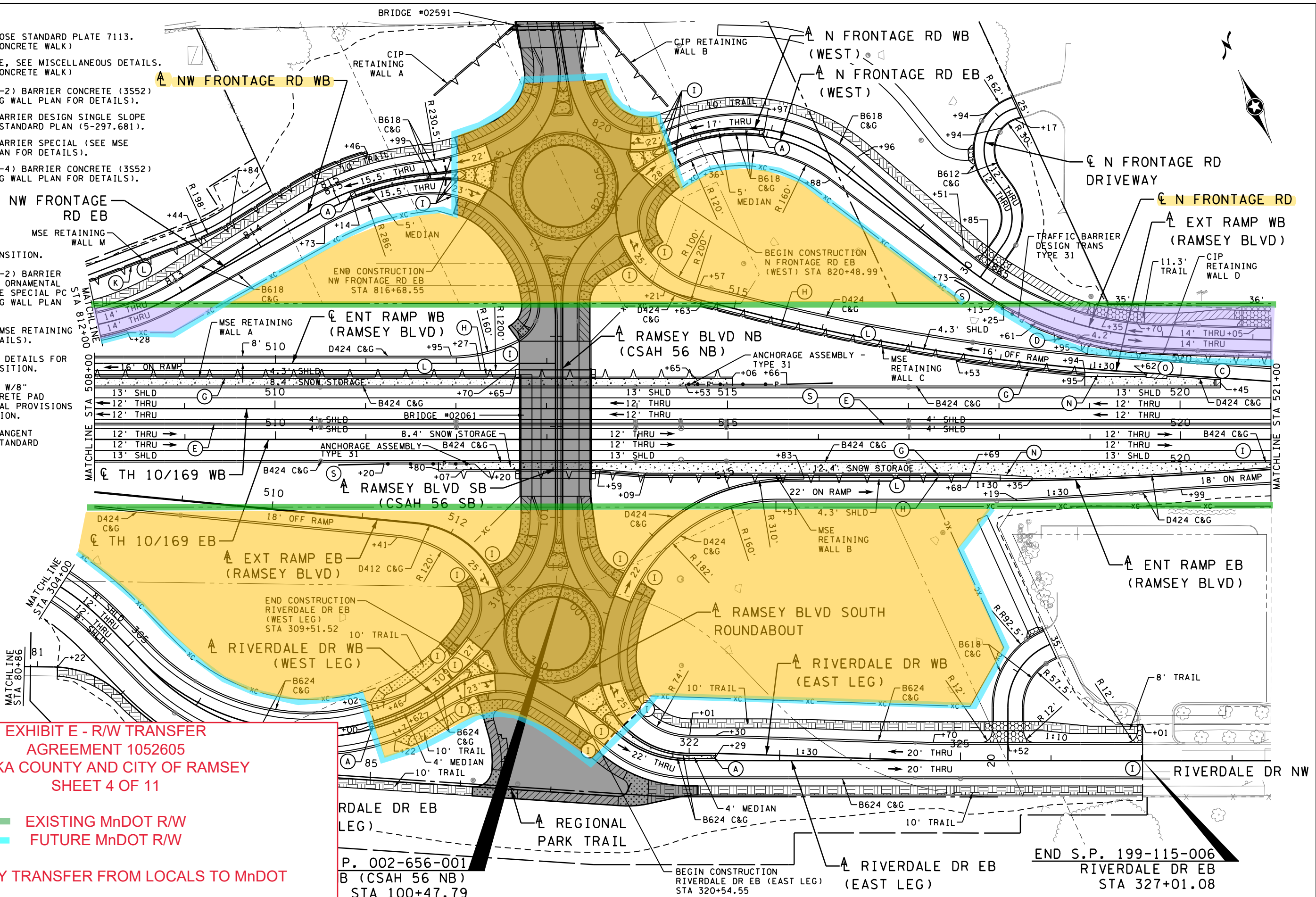
- (I) 10' CURB TYPE TRANSITION.
- (K) 36" TYPE P-1, (TL-2) BARRIER CONCRETE (3S52) & ORNAMENTAL METAL RAILING TYPE SPECIAL PC (SEE MSE RETAINING WALL PLAN FOR DETAILS).
- (L) MOMENT SLAB (SEE MSE RETAINING WALL PLAN FOR DETAILS).
- (N) SEE MISCELLANEOUS DETAILS FOR BARRIER/WALL TRANSITION.
- (O) IMPACT ATTENUATOR W/8" UNREINFORCED CONCRETE PAD (TL-3). SEE SPECIAL PROVISIONS FOR MORE INFORMATION.
- (S) END TREATMENT - TANGENT TERMINAL, MNDOT STANDARD PLAN (5-297.612).

RAMSEY BLVD CONSTRUCTION

**EXHIBIT E - R/W TRANSFER AGREEMENT 1052605 ANOKA COUNTY AND CITY OF RAMSEY SHEET 4 OF 11**

EXISTING MnDOT R/W  
FUTURE MnDOT R/W

PROPERTY TRANSFER FROM LOCALS TO MnDOT  
PROPERTY TRANSFER FROM MnDOT TO LOCALS



P. 002-656-001  
B (CSAH 56 NB)  
STA 100+47.79

BEGIN CONSTRUCTION  
RIVERDALE DR EB (EAST LEG)  
STA 320+54.55

END S.P. 199-115-006  
RIVERDALE DR EB  
STA 327+01.08



12224 NICOLLET AVENUE  
BURNSVILLE, MINNESOTA 55337  
Phone: (952) 890-0509  
Email: Burnsville@bolton-menk.com  
www.bolton-menk.com

REV. BY DATE  
I HEREBY CERTIFY THAT THIS PLAN, SPECIFICATION, OR REPORT WAS PREPARED BY ME OR UNDER MY DIRECT SUPERVISION AND THAT I AM A DULY LICENSED PROFESSIONAL ENGINEER UNDER THE LAWS OF THE STATE OF MINNESOTA.  
*Benjamin A. Ulrich*  
BENJAMIN A. ULRICH  
LIC. NO. 59444 DATE 03-08-2023

DESIGNED BAU  
DRAWN TWB  
CHECKED BAU  
S.P. 0202-116 (TH10), S.P. 002-596-026, S.P. 002-656-001, S.P. 002-657-003, S.P. 199-113-003, S.P. 199-115-006  
TH 10/169 IMPROVEMENTS  
CONSTRUCTION PLAN

SHEET 234 OF 685

bmi,tbi  
pdf-B and W.pitcfq  
12:37:05 PM  
tombu  
5/3/2023

LEGEND

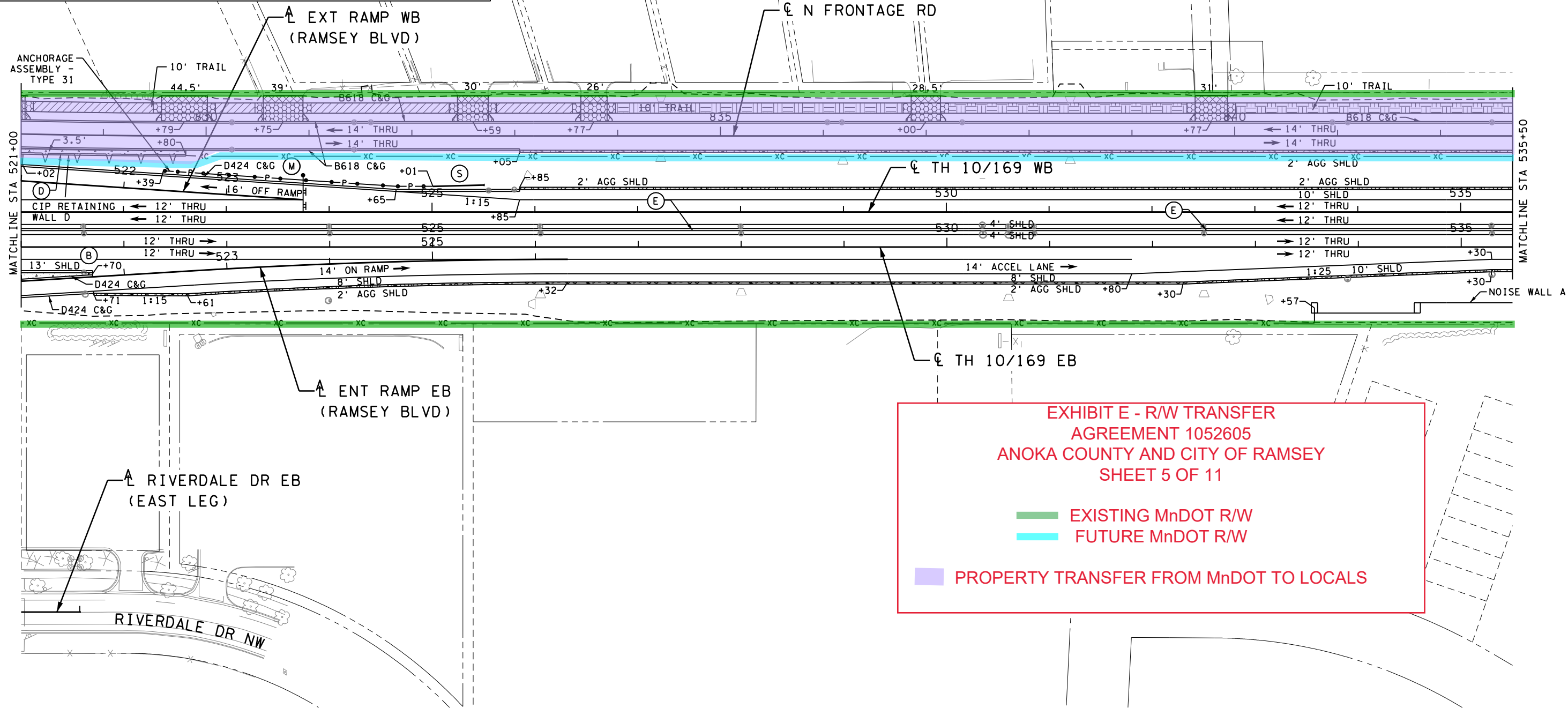
	4" CONCRETE WALK		TRAFFIC FLOW
	6" CONCRETE WALK		TRAFFIC BARRIER DESIGN TYPE 31
	CONCRETE CURB RAMP WALK		PROPOSED CHAIN LINK FENCE
	6" CONCRETE DRIVEWAY PAVEMENT		PAVEMENT SECTION TRANSITION
	7" CONCRETE WALK (TRUCK APRON)		EXISTING PERM EASEMENT
	8" CONCRETE DRIVEWAY PAVEMENT		EXISTING RIGHT-OF-WAY
	BITUMINOUS COMMERCIAL DRIVEWAY/PARKING LOT PAVEMENT		PROPOSED RIGHT-OF-WAY
	3" BITUMINOUS WALK		TEMPORARY EASEMENT
	AGGREGATE SURFACING (CV) CLASS 2		PERMANENT EASEMENT
			CONSTRUCTION LIMITS
			STORM SEWER STRUCTURE

CONSTRUCTION NOTES:

1. SEE INTERSECTION DETAIL SHEETS FOR INTERSECTION, SIDEWALK, DRIVEWAY AND PEDESTRIAN RAMP DETAILS.
2. SEE ACCESS ROAD PLAN FOR ACCESS ROAD ALIGNMENTS, PROFILES, AND ADDITIONAL DESIGN INFORMATION.
3. SEE TURF ESTABLISHMENT, EROSION CONTROL, AND SUPERELEVATION PLAN FOR SUPERELEVATION AND PAVEMENT CROSS SLOPE TRANSITIONS.

SHEET NOTES:

- (B) CONCRETE ENTRANCE NOSE STANDARD PLATE 7107. (PAID FOR AS 6" CONCRETE WALK)
- (D) 36" TYPE P-1, (TL-2) BARRIER CONCRETE (3S52) (SEE MSE RETAINING WALL PLAN FOR DETAILS).
- (E) CONCRETE MEDIAN BARRIER DESIGN SINGLE SLOPE TYPE 42 A, MNDOT STANDARD PLAN (5-297.681).
- (M) OVERHEAD SIGN LOCATION (SEE SIGNING PLANS FOR PANEL AND STRUCTURAL DETAILS).
- (S) END TREATMENT - TANGENT TERMINAL, MNDOT STANDARD PLAN (5-297.612).



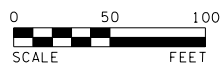
**EXHIBIT E - R/W TRANSFER  
AGREEMENT 1052605  
ANOKA COUNTY AND CITY OF RAMSEY  
SHEET 5 OF 11**

EXISTING MnDOT R/W  
 FUTURE MnDOT R/W  
 PROPERTY TRANSFER FROM MnDOT TO LOCALS

bmi.tbi

pdf-B and W.pltcfq  
12:37:06 PM

tombu  
5/3/2023



12224 NICOLLET AVENUE  
BURNSVILLE, MINNESOTA 55337  
Phone: (952) 890-0509  
Email: Burnsville@bolton-menk.com  
www.bolton-menk.com

REV.	BY	DATE

I HEREBY CERTIFY THAT THIS PLAN, SPECIFICATION, OR REPORT WAS PREPARED BY ME OR UNDER MY DIRECT SUPERVISION AND THAT I AM A DULY LICENSED PROFESSIONAL ENGINEER UNDER THE LAWS OF THE STATE OF MINNESOTA.

*Benjamin A. Ulrich*  
BENJAMIN A. ULRICH  
LIC. NO. 59444 DATE 03-08-2023

DESIGNED  
BAU  
DRAWN  
TWB  
CHECKED  
BAU

S.P. 0202-116 (TH10), S.P. 002-596-026, S.P. 002-656-001,  
S.P. 002-657-003, S.P. 199-113-003, S.P. 199-115-006  
TH 10/169 IMPROVEMENTS  
CONSTRUCTION PLAN

SHEET  
235  
OF  
685

LEGEND

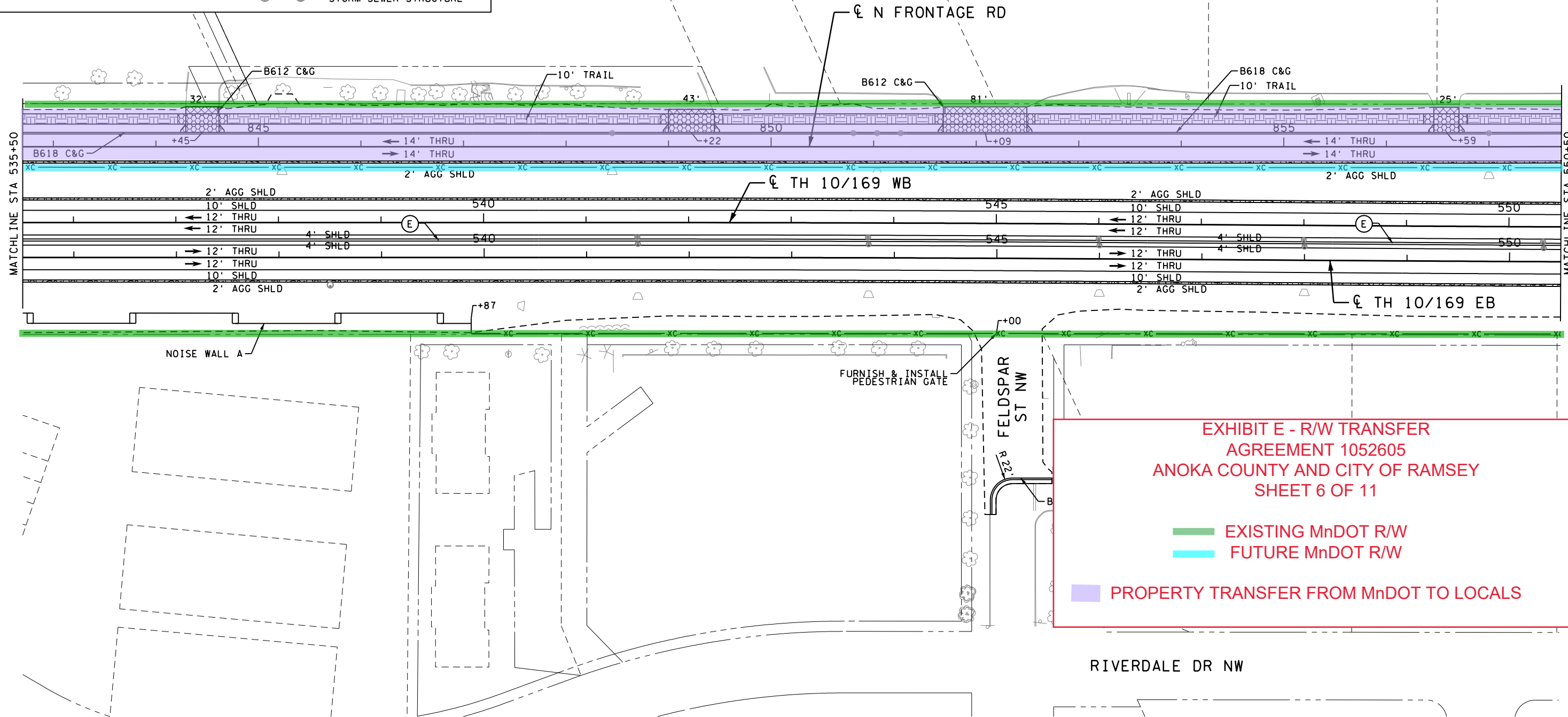
	4" CONCRETE WALK		TRAFFIC FLOW
	6" CONCRETE WALK		TRAFFIC BARRIER DESIGN TYPE 31
	CONCRETE CURB RAMP WALK		PROPOSED CHAIN LINK FENCE
	6" CONCRETE DRIVEWAY PAVEMENT		PAVEMENT SECTION TRANSITION
	7" CONCRETE WALK (TRUCK APRON)		EXISTING PERM EASEMENT
	8" CONCRETE DRIVEWAY PAVEMENT		EXISTING RR RIGHT-OF-WAY
	BITUMINOUS COMMERCIAL DRIVEWAY/PARKING LOT PAVEMENT		EXISTING RIGHT-OF-WAY
	3" BITUMINOUS WALK		PROPOSED RIGHT-OF-WAY
	AGGREGATE SURFACING (CV) CLASS 2		TEMPORARY EASEMENT
			PERMANENT EASEMENT
			CONSTRUCTION LIMITS
			STORM SEWER STRUCTURE

CONSTRUCTION NOTES:

1. SEE INTERSECTION DETAIL SHEETS FOR INTERSECTION, SIDEWALK, DRIVEWAY AND PEDESTRIAN RAMP DETAILS.
2. SEE ACCESS ROAD PLAN FOR ACCESS ROAD ALIGNMENTS, PROFILES, AND ADDITIONAL DESIGN INFORMATION.
3. SEE TURF ESTABLISHMENT, EROSION CONTROL, AND SUPERELEVATION PLAN FOR SUPERELEVATION AND PAVEMENT CROSS SLOPE TRANSITIONS.

SHEET NOTES:

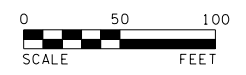
- (E) CONCRETE MEDIAN BARRIER DESIGN SINGLE SLOPE TYPE 42 A, MNDOT STANDARD PLAN (5-297.681).



**EXHIBIT E - R/W TRANSFER  
AGREEMENT 1052605  
ANOKA COUNTY AND CITY OF RAMSEY  
SHEET 6 OF 11**

EXISTING MnDOT R/W  
 FUTURE MnDOT R/W  
 PROPERTY TRANSFER FROM MnDOT TO LOCALS

bmi.tbi  
pdf-B and W.pltcfgr  
12:37:07 PM  
tombu  
5/3/2023



**BOLTON & MENK**

12224 NICOLLET AVENUE  
BURNSVILLE, MINNESOTA 55337  
Phone: (952) 890-0509  
Email: Burns@bolton-menk.com  
www.bolton-menk.com

REV.	BY	DATE

I HEREBY CERTIFY THAT THIS PLAN, SPECIFICATION, OR REPORT WAS PREPARED BY ME OR UNDER MY DIRECT SUPERVISION AND THAT I AM A DULY LICENSED PROFESSIONAL ENGINEER UNDER THE LAWS OF THE STATE OF MINNESOTA.

*Benjamin A. Ulrich*  
BENJAMIN A. ULRICH  
LIC. NO. 59444 DATE 03-08-2023

DESIGNED BAU	S.P. 0202-116 (TH10), S.P. 002-596-026, S.P. 002-656-001, S.P. 002-657-003, S.P. 199-113-003, S.P. 199-115-006	SHEET 236 OF 685
DRAWN TWB	TH 10/169 IMPROVEMENTS	
CHECKED BAU	CONSTRUCTION PLAN	

**LEGEND**

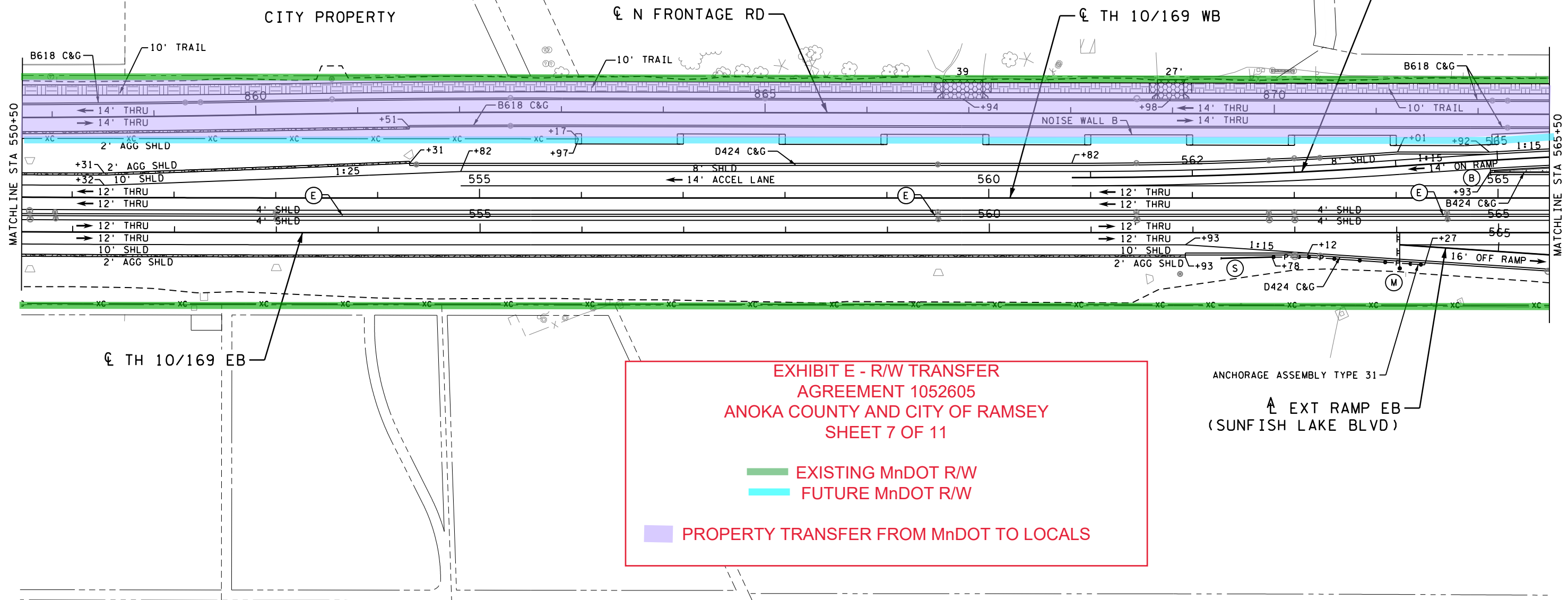
	4" CONCRETE WALK		TRAFFIC FLOW
	6" CONCRETE WALK		TRAFFIC BARRIER DESIGN TYPE 31
	CONCRETE CURB RAMP WALK		PROPOSED CHAIN LINK FENCE
	6" CONCRETE DRIVEWAY PAVEMENT		PAVEMENT SECTION TRANSITION
	7" CONCRETE WALK (TRUCK APRON)		EXISTING PERM EASEMENT
	8" CONCRETE DRIVEWAY PAVEMENT		EXISTING RIGHT-OF-WAY
	BITUMINOUS COMMERCIAL DRIVEWAY/PARKING LOT PAVEMENT		PROPOSED RIGHT-OF-WAY
	3" BITUMINOUS WALK		TEMPORARY EASEMENT
	AGGREGATE SURFACING (CV) CLASS 2		PERMANENT EASEMENT
			CONSTRUCTION LIMITS
			STORM SEWER STRUCTURE

**CONSTRUCTION NOTES:**

1. SEE INTERSECTION DETAIL SHEETS FOR INTERSECTION, SIDEWALK, DRIVEWAY AND PEDESTRIAN RAMP DETAILS.
2. SEE ACCESS ROAD PLAN FOR ACCESS ROAD ALIGNMENTS, PROFILES, AND ADDITIONAL DESIGN INFORMATION.
3. SEE TURF ESTABLISHMENT, EROSION CONTROL, AND SUPERELEVATION PLAN FOR SUPERELEVATION AND PAVEMENT CROSS SLOPE TRANSITIONS.

**SHEET NOTES:**

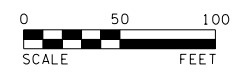
- (B) CONCRETE ENTRANCE NOSE STANDARD PLATE 7107. (PAID FOR AS 6" CONCRETE WALK)
- (E) CONCRETE MEDIAN BARRIER DESIGN SINGLE SLOPE TYPE 42 A, MNDOT STANDARD PLAN (5-297.681).
- (M) OVERHEAD SIGN LOCATION (SEE SIGNING PLANS FOR PANEL AND STRUCTURAL DETAILS).
- (S) END TREATMENT - TANGENT TERMINAL, MNDOT STANDARD PLAN (5-297.612).



**EXHIBIT E - R/W TRANSFER  
AGREEMENT 1052605  
ANOKA COUNTY AND CITY OF RAMSEY  
SHEET 7 OF 11**

█ EXISTING MnDOT R/W  
█ FUTURE MnDOT R/W  
█ PROPERTY TRANSFER FROM MnDOT TO LOCALS

bmi.tbl  
pdf-B and W.pltfcfg  
12:37:08 PM  
tombu  
5/3/2023



12224 NICOLLET AVENUE  
BURNSVILLE, MINNESOTA 55337  
Phone: (952) 890-0509  
Email: Burnsville@bolton-menk.com  
www.bolton-menk.com

REV.	BY	DATE

I HEREBY CERTIFY THAT THIS PLAN, SPECIFICATION, OR REPORT WAS PREPARED BY ME OR UNDER MY DIRECT SUPERVISION AND THAT I AM A DULY LICENSED PROFESSIONAL ENGINEER UNDER THE LAWS OF THE STATE OF MINNESOTA.

*Benjamin A. Ulrich*  
BENJAMIN A. ULRICH  
LIC. NO. 59444 DATE 03-08-2023

DESIGNED  
BAU  
DRAWN  
TWB  
CHECKED  
BAU

S.P. 0202-116 (TH10), S.P. 002-596-026, S.P. 002-656-001,  
S.P. 002-657-003, S.P. 199-113-003, S.P. 199-115-006  
TH 10/169 IMPROVEMENTS  
CONSTRUCTION PLAN

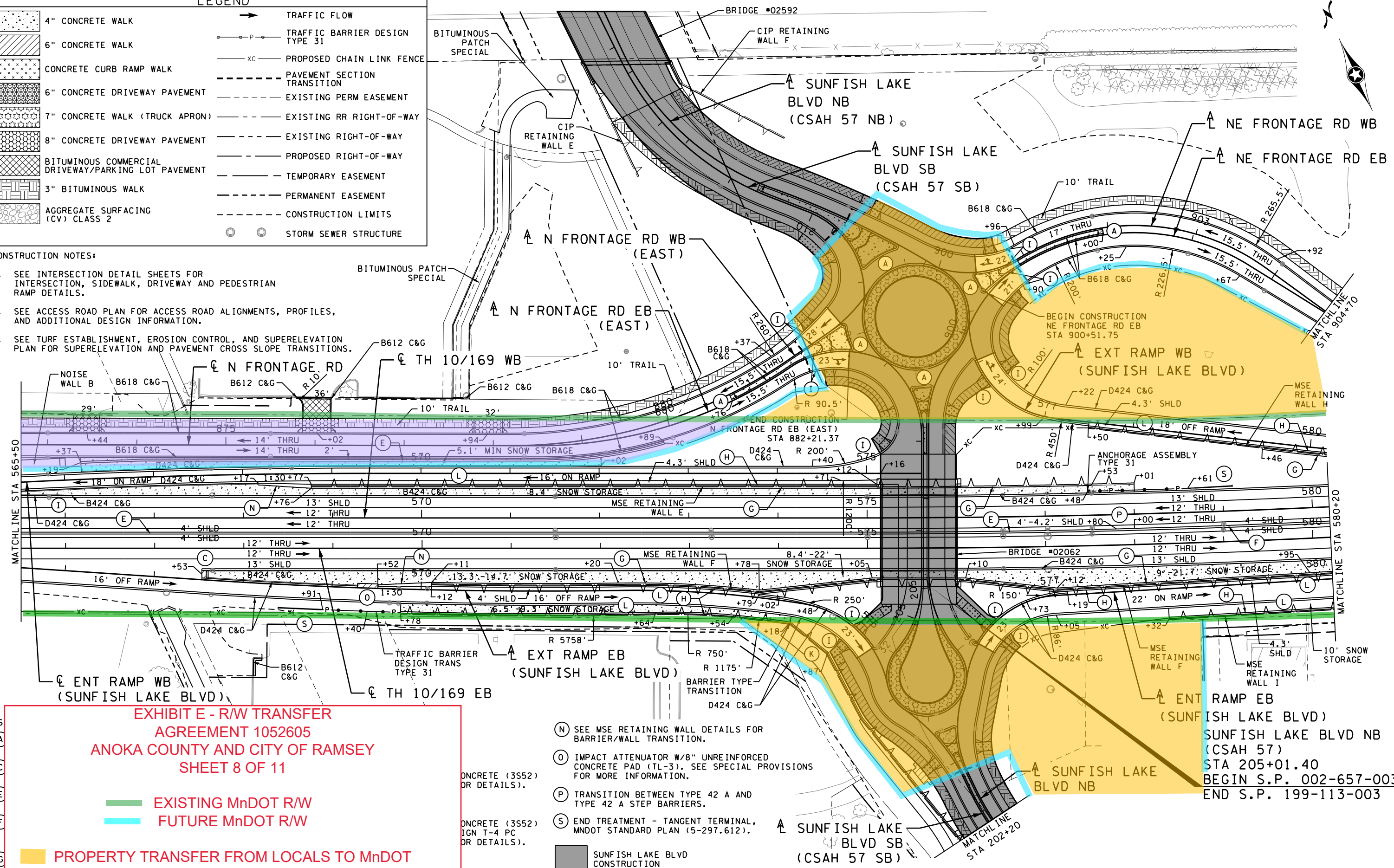
SHEET  
237  
OF  
685

**LEGEND**

	4" CONCRETE WALK		TRAFFIC FLOW
	6" CONCRETE WALK		TRAFFIC BARRIER DESIGN TYPE 31
	CONCRETE CURB RAMP WALK		PROPOSED CHAIN LINK FENCE
	6" CONCRETE DRIVEWAY PAVEMENT		PAVEMENT SECTION TRANSITION
	7" CONCRETE WALK (TRUCK APRON)		EXISTING PERM EASEMENT
	8" CONCRETE DRIVEWAY PAVEMENT		EXISTING RIGHT-OF-WAY
	BITUMINOUS COMMERCIAL DRIVEWAY/PARKING LOT PAVEMENT		PROPOSED RIGHT-OF-WAY
	3" BITUMINOUS WALK		TEMPORARY EASEMENT
	AGGREGATE SURFACING (CV) CLASS 2		PERMANENT EASEMENT
			CONSTRUCTION LIMITS
			STORM SEWER STRUCTURE

**CONSTRUCTION NOTES:**

1. SEE INTERSECTION DETAIL SHEETS FOR INTERSECTION, SIDEWALK, DRIVEWAY AND PEDESTRIAN RAMP DETAILS.
2. SEE ACCESS ROAD PLAN FOR ACCESS ROAD ALIGNMENTS, PROFILES, AND ADDITIONAL DESIGN INFORMATION.
3. SEE TURF ESTABLISHMENT, EROSION CONTROL, AND SUPERELEVATION PLAN FOR SUPERELEVATION AND PAVEMENT CROSS SLOPE TRANSITIONS.



**EXHIBIT E - R/W TRANSFER AGREEMENT 1052605 ANOKA COUNTY AND CITY OF RAMSEY SHEET 8 OF 11**

- EXISTING MnDOT R/W
- FUTURE MnDOT R/W
- PROPERTY TRANSFER FROM LOCALS TO MnDOT
- PROPERTY TRANSFER FROM MnDOT TO LOCALS

- (N) SEE MSE RETAINING WALL DETAILS FOR BARRIER/WALL TRANSITION.
- (O) IMPACT ATTENUATOR W/8" UNREINFORCED CONCRETE PAD (TL-3). SEE SPECIAL PROVISIONS FOR MORE INFORMATION.
- (P) TRANSITION BETWEEN TYPE 42 A AND TYPE 42 A STEP BARRIERS.
- (S) END TREATMENT - TANGENT TERMINAL, MNDOT STANDARD PLAN (5-297.612).

**BOLTON & MENK**  
 12224 NICOLLET AVENUE  
 BURNSVILLE, MINNESOTA 55337  
 Phone: (952) 890-0509  
 Email: Burnsville@bolton-menk.com  
 www.bolton-menk.com

REV. BY DATE  
 I HEREBY CERTIFY THAT THIS PLAN, SPECIFICATION, OR REPORT WAS PREPARED BY ME OR UNDER MY DIRECT SUPERVISION AND THAT I AM A DULY LICENSED PROFESSIONAL ENGINEER UNDER THE LAWS OF THE STATE OF MINNESOTA.  
  
 BENJAMIN A. ULRICH  
 LIC. NO. 59444 DATE 03-08-2023

DESIGNED: BAW  
 DRAWN: TWB  
 CHECKED: BAW  
 S.P. 0202-116 (TH10), S.P. 002-596-026, S.P. 002-656-001, S.P. 002-657-003, S.P. 199-113-003, S.P. 199-115-006  
 TH 10/169 IMPROVEMENTS  
 CONSTRUCTION PLAN  
 SHEET 238 OF 685

bmi,tbl  
 pdf-B and W.pltcfq  
 12:37:10 PM  
 5/3/2023  
 H:\AK

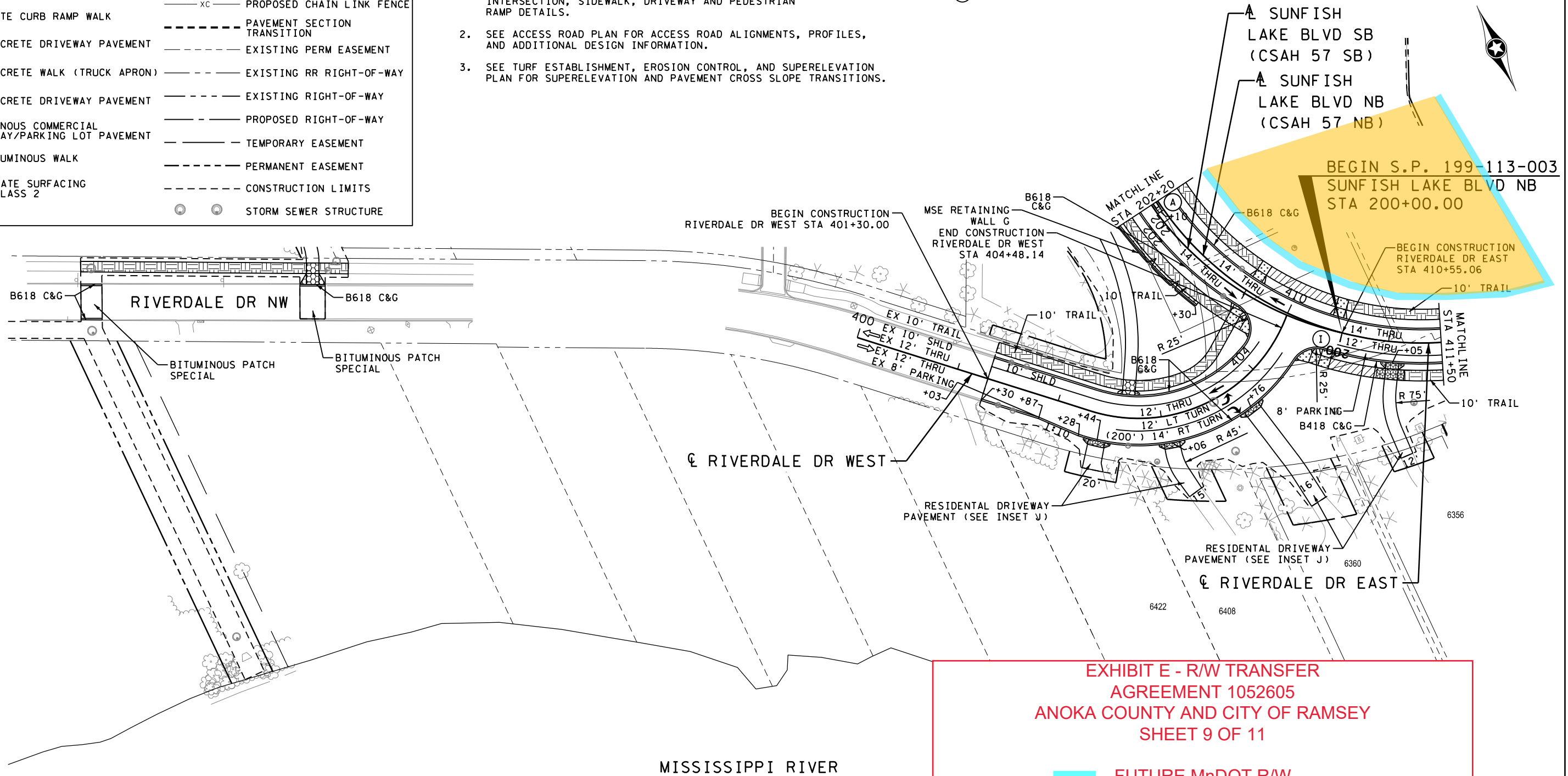
LEGEND			
	4" CONCRETE WALK		TRAFFIC FLOW
	6" CONCRETE WALK		TRAFFIC BARRIER DESIGN TYPE 31
	CONCRETE CURB RAMP WALK		PROPOSED CHAIN LINK FENCE
	6" CONCRETE DRIVEWAY PAVEMENT		PAVEMENT SECTION TRANSITION
	7" CONCRETE WALK (TRUCK APRON)		EXISTING PERM EASEMENT
	8" CONCRETE DRIVEWAY PAVEMENT		EXISTING RR RIGHT-OF-WAY
	BITUMINOUS COMMERCIAL DRIVEWAY/PARKING LOT PAVEMENT		EXISTING RIGHT-OF-WAY
	3" BITUMINOUS WALK		PROPOSED RIGHT-OF-WAY
	AGGREGATE SURFACING (CV) CLASS 2		TEMPORARY EASEMENT
			PERMANENT EASEMENT
			CONSTRUCTION LIMITS
			STORM SEWER STRUCTURE

CONSTRUCTION NOTES:

1. SEE INTERSECTION DETAIL SHEETS FOR INTERSECTION, SIDEWALK, DRIVEWAY AND PEDESTRIAN RAMP DETAILS.
2. SEE ACCESS ROAD PLAN FOR ACCESS ROAD ALIGNMENTS, PROFILES, AND ADDITIONAL DESIGN INFORMATION.
3. SEE TURF ESTABLISHMENT, EROSION CONTROL, AND SUPERELEVATION PLAN FOR SUPERELEVATION AND PAVEMENT CROSS SLOPE TRANSITIONS.

SHEET NOTES:

- (A) CONCRETE MEDIAN NOSE STANDARD PLATE 7113. (PAID FOR AS 6" CONCRETE WALK)
- (I) 10' CURB TYPE TRANSITION.



**EXHIBIT E - R/W TRANSFER  
AGREEMENT 1052605  
ANOKA COUNTY AND CITY OF RAMSEY  
SHEET 9 OF 11**

— FUTURE MnDOT R/W

■ PROPERTY TRANSFER FROM LOCALS TO MnDOT

bmi.tbi

pdf-B and W.pltcfgr  
12:37:21 PM

tombu  
5/3/2023

H:\AKCO\T44121316\CAD\MS\plans\Const\cd0202116\_cp016.dgn

0 50 100  
SCALE FEET



12224 NICOLLET AVENUE  
BURNSVILLE, MINNESOTA 55337  
Phone: (952) 890-0509  
Email: Burns@bolton-menk.com  
www.bolton-menk.com

REV.	BY	DATE

I HEREBY CERTIFY THAT THIS PLAN, SPECIFICATION, OR REPORT WAS PREPARED BY ME OR UNDER MY DIRECT SUPERVISION AND THAT I AM A DULY LICENSED PROFESSIONAL ENGINEER UNDER THE LAWS OF THE STATE OF MINNESOTA.

*Benjamin A. Ulrich*  
BENJAMIN A. ULRICH  
LIC. NO. 59444 DATE 03-08-2023

DESIGNED  
BAU  
DRAWN  
TWE  
CHECKED  
BAU

S.P. 0202-116 (TH10), S.P. 002-596-026, S.P. 002-656-001,  
S.P. 002-657-003, S.P. 199-113-003, S.P. 199-115-006  
TH 10/169 IMPROVEMENTS  
CONSTRUCTION PLAN

SHEET  
246  
OF  
685

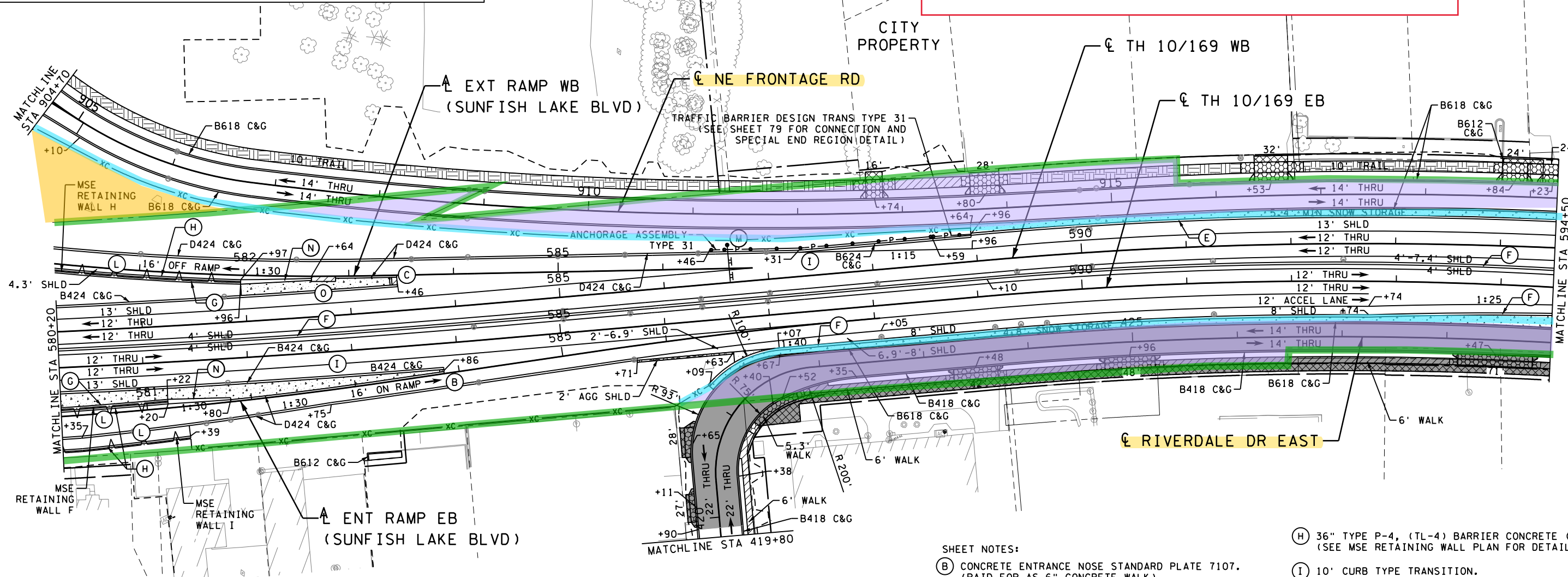
**LEGEND**

	4" CONCRETE WALK		TRAFFIC FLOW
	6" CONCRETE WALK		TRAFFIC BARRIER DESIGN TYPE 31
	CONCRETE CURB RAMP WALK		PROPOSED CHAIN LINK FENCE
	6" CONCRETE DRIVEWAY PAVEMENT		PAVEMENT SECTION TRANSITION
	7" CONCRETE WALK (TRUCK APRON)		EXISTING PERM EASEMENT
	8" CONCRETE DRIVEWAY PAVEMENT		EXISTING RIGHT-OF-WAY
	BITUMINOUS COMMERCIAL DRIVEWAY/PARKING LOT PAVEMENT		PROPOSED RIGHT-OF-WAY
	3" BITUMINOUS WALK		TEMPORARY EASEMENT
	AGGREGATE SURFACING (CV) CLASS 2		PERMANENT EASEMENT
			CONSTRUCTION LIMITS
			STORM SEWER STRUCTURE

CONSTRUCT BITUMINOUS PAVEMENT ONLY

**EXHIBIT E - R/W TRANSFER AGREEMENT 1052605 ANOKA COUNTY AND CITY OF RAMSEY SHEET 10 OF 11**

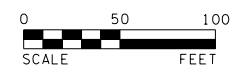
EXISTING MnDOT R/W  
 FUTURE MnDOT R/W  
 PROPERTY TRANSFER FROM LOCALS TO MnDOT  
 PROPERTY TRANSFER FROM MnDOT TO LOCALS



- CONSTRUCTION NOTES:**
- SEE INTERSECTION DETAIL SHEETS FOR INTERSECTION, SIDEWALK, DRIVEWAY AND PEDESTRIAN RAMP DETAILS.
  - SEE ACCESS ROAD PLAN FOR ACCESS ROAD ALIGNMENTS, PROFILES, AND ADDITIONAL DESIGN INFORMATION.
  - SEE TURF ESTABLISHMENT, EROSION CONTROL, AND SUPERELEVATION PLAN FOR SUPERELEVATION AND PAVEMENT CROSS SLOPE TRANSITIONS.

- SHEET NOTES:**
- (H) 36" TYPE P-4, (TL-4) BARRIER CONCRETE (3S52) (SEE MSE RETAINING WALL PLAN FOR DETAILS).
  - (I) 10' CURB TYPE TRANSITION.
  - (L) MOMENT SLAB (SEE MSE RETAINING WALL PLAN FOR DETAILS).
  - (M) OVERHEAD SIGN LOCATION (SEE SIGNING PLANS FOR PANEL AND STRUCTURAL DETAILS).
  - (N) SEE MSE RETAINING WALL DETAILS FOR BARRIER/WALL TRANSITION.
  - (O) IMPACT ATTENUATOR W/8" UNREINFORCED CONCRETE PAD (TL-3). SEE SPECIAL PROVISIONS FOR MORE INFORMATION.
  - (B) CONCRETE ENTRANCE NOSE STANDARD PLATE 7107. (PAID FOR AS 6" CONCRETE WALK)
  - (C) CONCRETE EXIT NOSE, SEE MISCELLANEOUS DETAILS. (PAID FOR AS 6" CONCRETE WALK)
  - (E) CONCRETE MEDIAN BARRIER DESIGN SINGLE SLOPE TYPE 42 A, MNDOT STANDARD PLAN (5-297.681).
  - (F) CONCRETE MEDIAN BARRIER DESIGN SINGLE SLOPE TYPE 42 A STEP, MNDOT STANDARD PLAN (5-297.681).
  - (G) CONCRETE MEDIAN BARRIER SPECIAL (SEE MSE RETAINING WALL PLAN FOR DETAILS).

bmi.tbi  
 pdf-B and W.pltcfgr  
 12:37:12 PM  
 tomdu  
 5/3/2023



**BOLTON & MENK**  
 12224 NICOLLET AVENUE  
 BURNSVILLE, MINNESOTA 55337  
 Phone: (952) 890-0509  
 Email: Burns@bolton-menk.com  
 www.bolton-menk.com

REV.	BY	DATE

I HEREBY CERTIFY THAT THIS PLAN, SPECIFICATION, OR REPORT WAS PREPARED BY ME OR UNDER MY DIRECT SUPERVISION AND THAT I AM A DULY LICENSED PROFESSIONAL ENGINEER UNDER THE LAWS OF THE STATE OF MINNESOTA.

*Benjamin A. Ulrich*  
 BENJAMIN A. ULRICH  
 LIC. NO. 59444 DATE 03-08-2023

DESIGNED BAU	S.P. 0202-116 (TH10), S.P. 002-596-026, S.P. 002-656-001, S.P. 002-657-003, S.P. 199-113-003, S.P. 199-115-006	SHEET 239
DRAWN TWB	TH 10/169 IMPROVEMENTS	OF 685
CHECKED BAU	CONSTRUCTION PLAN	

**SHEET NOTES:**

- (E) CONCRETE MEDIAN BARRIER DESIGN SINGLE SLOPE TYPE 42 A, MNDOT STANDARD PLAN (5-297.681).
- (F) CONCRETE MEDIAN BARRIER DESIGN SINGLE SLOPE TYPE 42 A STEP, MNDOT STANDARD PLAN (5-297.681).
- (I) 10' CURB TYPE TRANSITION.
- (P) TRANSITION BETWEEN TYPE 42 A AND TYPE 42 A STEP BARRIERS.

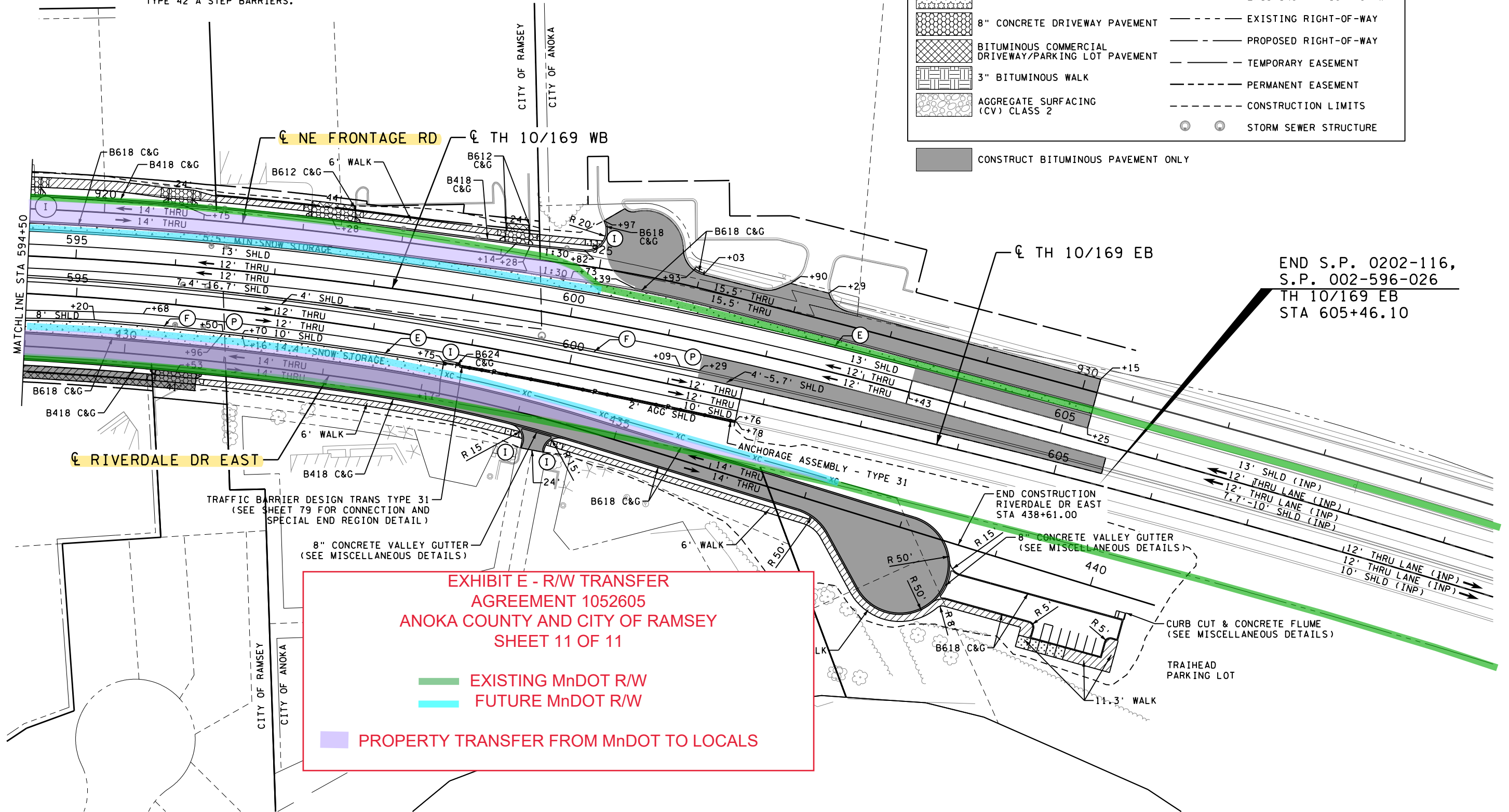
**CONSTRUCTION NOTES:**

1. SEE INTERSECTION DETAIL SHEETS FOR INTERSECTION, SIDEWALK, DRIVEWAY AND PEDESTRIAN RAMP DETAILS.
2. SEE ACCESS ROAD PLAN FOR ACCESS ROAD ALIGNMENTS, PROFILES, AND ADDITIONAL DESIGN INFORMATION.
3. SEE TURF ESTABLISHMENT, EROSION CONTROL, AND SUPERELEVATION PLAN FOR SUPERELEVATION AND PAVEMENT CROSS SLOPE TRANSITIONS.

**LEGEND**

	4" CONCRETE WALK		TRAFFIC FLOW
	6" CONCRETE WALK		TRAFFIC BARRIER DESIGN TYPE 31
	CONCRETE CURB RAMP WALK		PROPOSED CHAIN LINK FENCE
	6" CONCRETE DRIVEWAY PAVEMENT		PAVEMENT SECTION TRANSITION
	7" CONCRETE WALK (TRUCK APRON)		EXISTING PERM EASEMENT
	8" CONCRETE DRIVEWAY PAVEMENT		EXISTING RR RIGHT-OF-WAY
	BITUMINOUS COMMERCIAL DRIVEWAY/PARKING LOT PAVEMENT		EXISTING RIGHT-OF-WAY
	3" BITUMINOUS WALK		PROPOSED RIGHT-OF-WAY
	AGGREGATE SURFACING (CV) CLASS 2		TEMPORARY EASEMENT
			PERMANENT EASEMENT
			CONSTRUCTION LIMITS
			STORM SEWER STRUCTURE

CONSTRUCT BITUMINOUS PAVEMENT ONLY

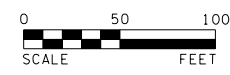


END S.P. 0202-116,  
S.P. 002-596-026  
TH 10/169 EB  
STA 605+46.10

**EXHIBIT E - R/W TRANSFER  
AGREEMENT 1052605  
ANOKA COUNTY AND CITY OF RAMSEY  
SHEET 11 OF 11**

EXISTING MnDOT R/W  
 FUTURE MnDOT R/W  
 PROPERTY TRANSFER FROM MnDOT TO LOCALS

bmi.tbi  
pdf-B and W.pltcfq  
12:37:13 PM  
5/3/2023



12224 NICOLLET AVENUE  
BURNSVILLE, MINNESOTA 55337  
Phone: (952) 890-0509  
Email: Burns@bolton-menk.com  
www.bolton-menk.com

REV.	BY	DATE

I HEREBY CERTIFY THAT THIS PLAN, SPECIFICATION, OR REPORT WAS PREPARED BY ME OR UNDER MY DIRECT SUPERVISION AND THAT I AM A DULY LICENSED PROFESSIONAL ENGINEER UNDER THE LAWS OF THE STATE OF MINNESOTA.

*Benjamin A. Ulrich*  
BENJAMIN A. ULRICH  
LIC. NO. 59444 DATE 03-08-2023

DESIGNED  
BAU  
DRAWN  
TWE  
CHECKED  
BAU

S.P. 0202-116 (TH10), S.P. 002-596-026, S.P. 002-656-001,  
S.P. 002-657-003, S.P. 199-113-003, S.P. 199-115-006  
TH 10/169 IMPROVEMENTS  
CONSTRUCTION PLAN

SHEET  
240  
OF  
685