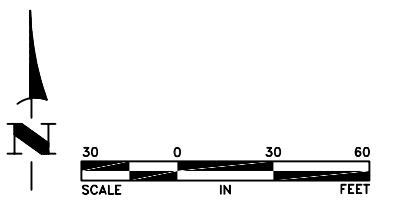


LEGEND

	PROPERTY LINE
	BUILDING SETBACK
	SECTION LINE
	EASEMENT LINE
	EXISTING CONTOUR
	PROPOSED CONTOUR
	BURIED GAS MAIN
	BURIED TELEPHONE LINE
	OVERHEAD UTILITY LINE
	BURIED ELECTRIC LINE
	EXISTING CONCRETE CURB AND GUTTER
	PROPOSED B612 CURB AND GUTTER
	EXISTING UTILITY POLE
	EXISTING SANITARY MANHOLE
	SIGN
	DECIDUOUS TREE
	CONIFEROUS TREE
	SAFETY FENCE FOR TREE PROTECTION
	PROPOSED SANITARY SEWER MANHOLE
	PROPOSED STORM MANHOLE
	PROPOSED STORM MANHOLE
	EXISTING WELL
	SOIL BORING LOCATION
	DETAIL NUMBER
	SHEET NUMBER

	PROPOSED CONCRETE PAVEMENT PER $\frac{3}{2}$
	PROPOSED BITUMINOUS PAVEMENT PER $\frac{2}{2}$
	PROPOSED BITUMINOUS PAVEMENT PER $\frac{1}{2}$
	EXISTING CONCRETE PAVEMENT
	EXISTING BITUMINOUS PAVEMENT
	EXISTING GRAVEL PAVEMENT



Apr 21, 2023 - 10:46am K:\PRIVATE\3244.16\ENGINEERING\PLAN DWG\3244.16_PAVING.dwg

DATE	REVISION
4/5/23	CITY COMMENTS
4/18/23	CITY COMMENTS

I hereby certify that this plan, specification, or report was prepared by me or under my direct supervision and that I am a duly Licensed Professional Engineer under the laws of the State of Minnesota.

Shane Nelson
 SHANE M. NELSON, P.E.
 Date 3/8/23 Lic. No. 43381

DESIGNED BY: SMN
DRAWN BY: SGJ
CHECKED BY: TAE

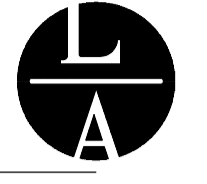


Hakanson Anderson
 Civil Engineers and Land Surveyors
 3601 Thurston Ave., Anoka, Minnesota 55303
 763-427-5860 FAX 763-427-0520
 www.hakanson-anderson.com

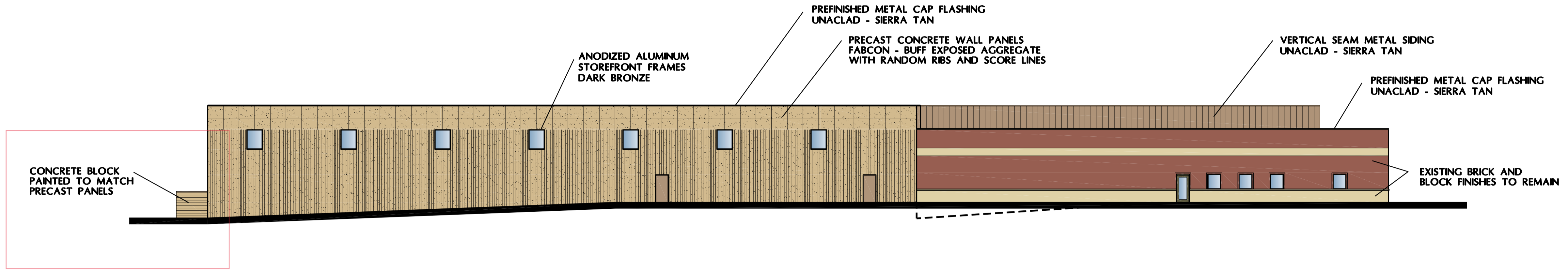
SODERHOLM AND ASSOCIATES BUILDING
 ADDITION SITE PLAN

PAVING PLAN
 CITY OF RAMSEY, MINNESOTA

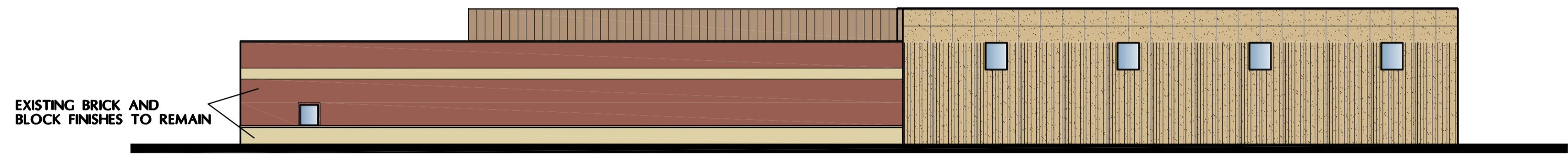
SHEET
 11
 OF
 13
 SHEETS



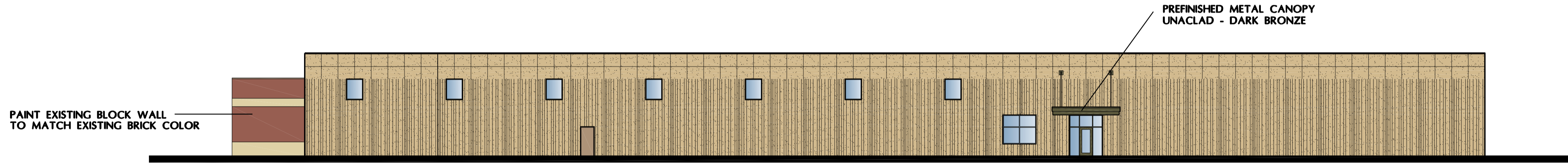
S
T
C
T
R
E
P
M
A
L
C
L
A
R
A
R
A



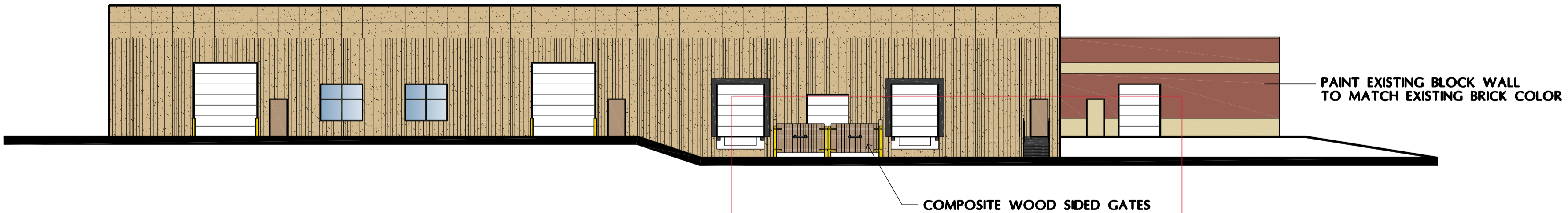
NORTH ELEVATION



WEST ELEVATION



SOUTH ELEVATION



EAST ELEVATION

SODERHOLM AND ASSOCIATES
7150 143rd Avenue N.W., Ramsey, Minnesota

NOTE: THIS DRAWING IS FOR ILLUSTRATIVE PURPOSES ONLY. ACTUAL COLORS NEED TO BE FIELD VERIFIED.