

STORYTELLER CAFE ADDITION

**City of Ramsey
County of Anoka
Section 28, T32, R25**

KNOW ALL PERSONS BY THESE PRESENTS: That the City of Ramsey, a Minnesota municipal corporation, owner of the following described property situated in the City of Ramsey, County of Anoka, State of Minnesota:

Outlot B, COR STONE BROOK ACADEMY, Anoka County, Minnesota.

Has caused the same to be surveyed and platted as STORYTELLER CAFE ADDITION and does hereby dedicate to the public for public use the drainage and utility easements as shown by this plat.

In witness whereof said City of Ramsey, a Minnesota municipal corporation, has caused these presents to be signed by its proper officers this ___ day of _____, 20__.

By _____ By _____

Mayor Clerk

STATE OF MINNESOTA
COUNTY OF _____

This instrument was acknowledged before me this ___ day of _____, 20__ by _____, as Mayor and _____, as City Clerk, of the City of Ramsey, a Minnesota municipal corporation, on behalf of the corporation.

(Signature)

(Print Name)
Notary Public, _____ County, Minnesota
My Commission Expires _____

I Jason E. Rud do hereby certify that this plat was prepared by me or under my direct supervision; that I am a duly Licensed Land Surveyor in the State of Minnesota; that this plat is a correct representation of the boundary survey; that all mathematical data and labels are correctly designated on this plat; that all monuments depicted on this plat have been, or will be correctly set within one year; that all water boundaries and wet lands, as defined in Minnesota Statutes, Section 505.01, Subd. 3, as of the date of this certificate are shown and labeled on this plat; and all public ways are shown and labeled on this plat.

Dated this ___ day of _____, 20__.

Jason E. Rud, Licensed Land Surveyor
Minnesota License No. 41578

STATE OF MINNESOTA
COUNTY OF _____

This instrument was acknowledged before me this ___ day of _____, 20__ by Jason E. Rud.

(Signature)

(Print Name)
Notary Public, _____ County, Minnesota
My Commission Expires _____

CITY COUNCIL, CITY OF RAMSEY, MINNESOTA

This plat of STORYTELLER CAFE ADDITION was approved and accepted by the City Council of the City of Ramsey, Minnesota at a regular meeting thereof held this ___ day of _____, 20__, and said plat is in compliance with the provisions of Minnesota Statutes, Section 505.03, Subd. 2.

By _____ Mayor By _____ Clerk

COUNTY SURVEYOR

I hereby certify that in accordance with Minnesota Statutes, Section 505.021, Subd. 11, this plat has been reviewed and approved this ___ day of _____, 20__.

David M. Ziegler
Anoka County Surveyor

COUNTY AUDITOR/TREASURER

Pursuant to Minnesota Statutes, Section 505.021, Subd. 9, taxes payable in the year 20__ on the land hereinbefore described have been paid. Also, pursuant to Minnesota Statutes, Section 272.12, there are no delinquent taxes and transfer entered this ___ day of _____, 20__.

Property Tax Administrator

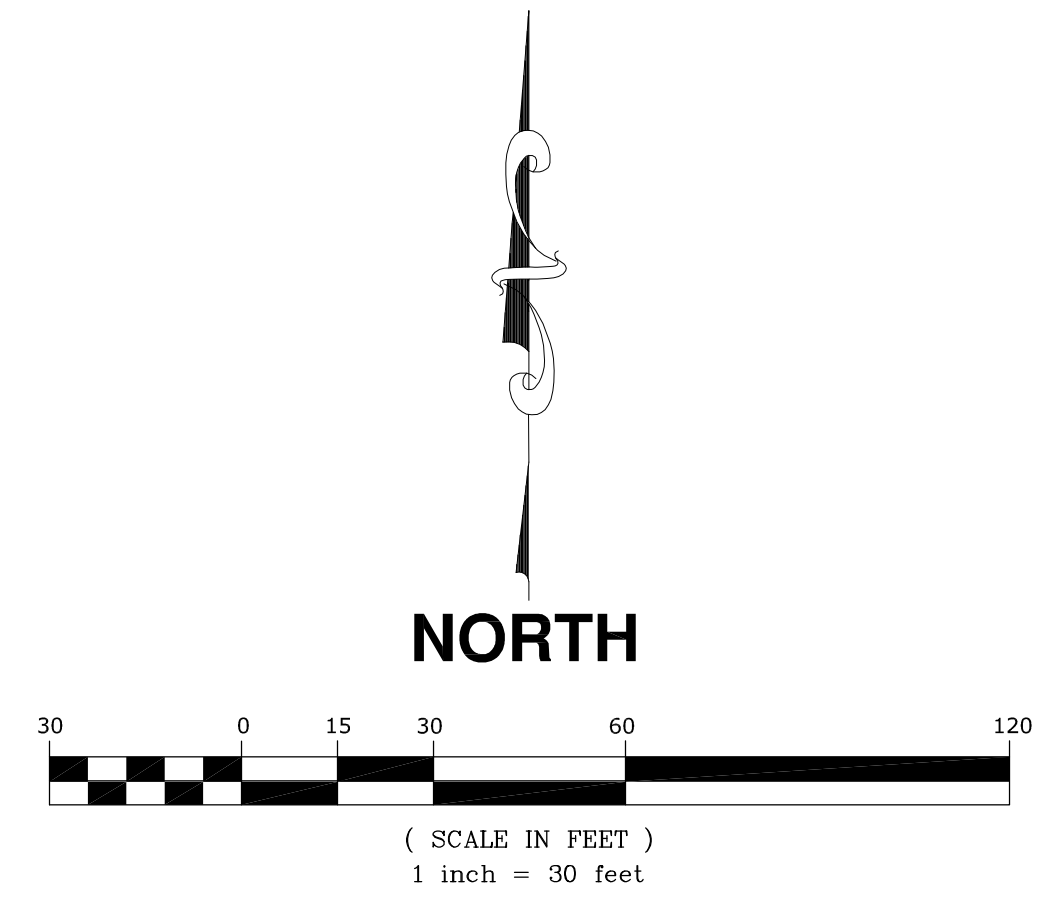
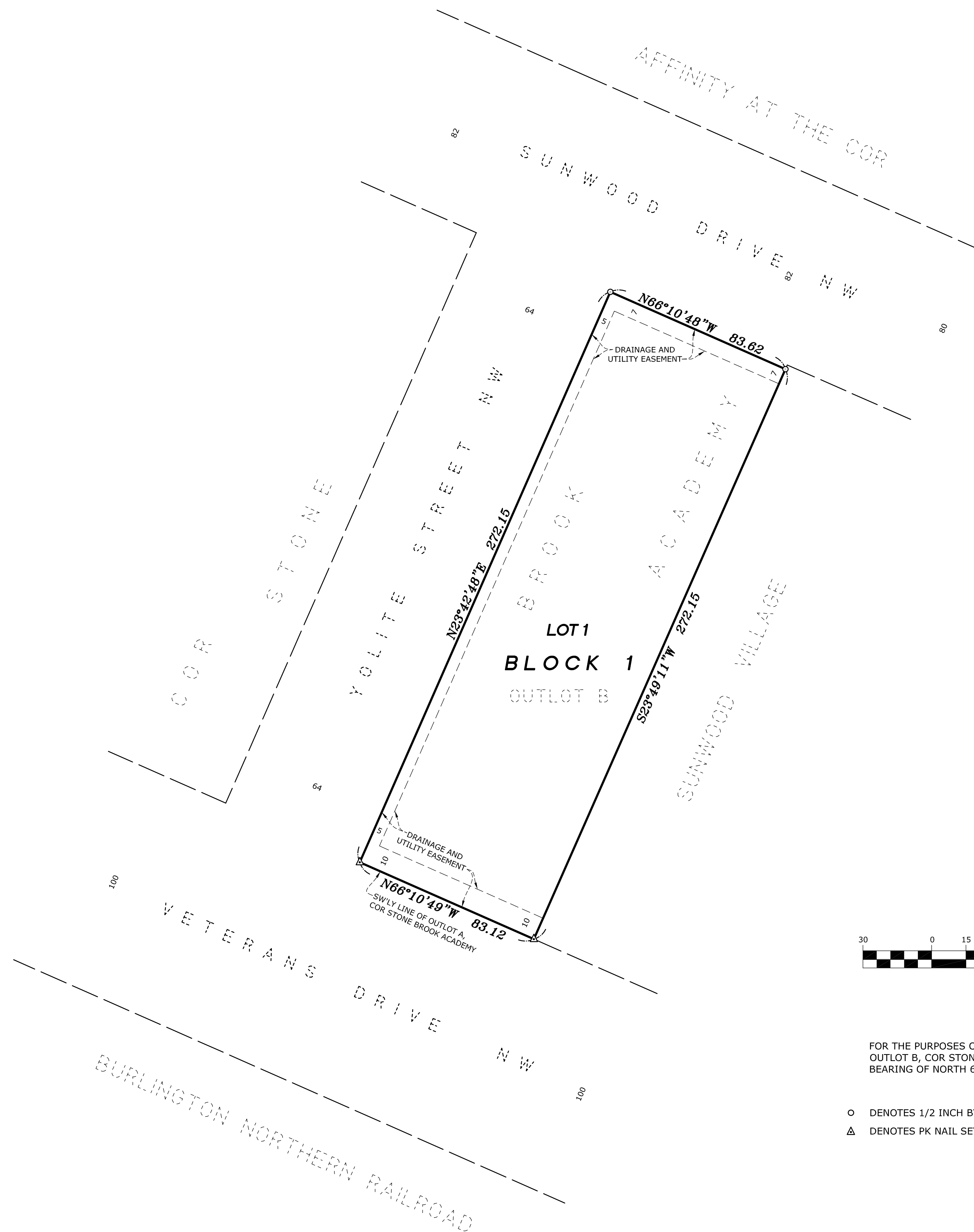
By _____, Deputy

COUNTY RECORDER/REGISTRAR OF TITLES
COUNTY OF ANOKA, STATE OF MINNESOTA

I hereby certify that this plat of STORYTELLER CAFE ADDITION was filed in the office of the County Recorder/Registrar of Titles for public record on this ___ day of _____, 20__, o'clock __M. and was duly recorded in Book _____ Page _____, as Document Number _____.

County Recorder/Registrar of Titles

By _____, Deputy



FOR THE PURPOSES OF THIS PLAT THE SOUTHWESTERLY LINE OF OUTLOT B, COR STONE BROOK ACADEMY IS ASSUMED TO HAVE A BEARING OF NORTH 66 DEGREES 10 MINUTES 49 SECONDS WEST.

- DENOTES 1/2 INCH BY 14 INCH IRON MONUMENT SET, MARKED RLS# 41578
- △ DENOTES PK NAIL SET

