

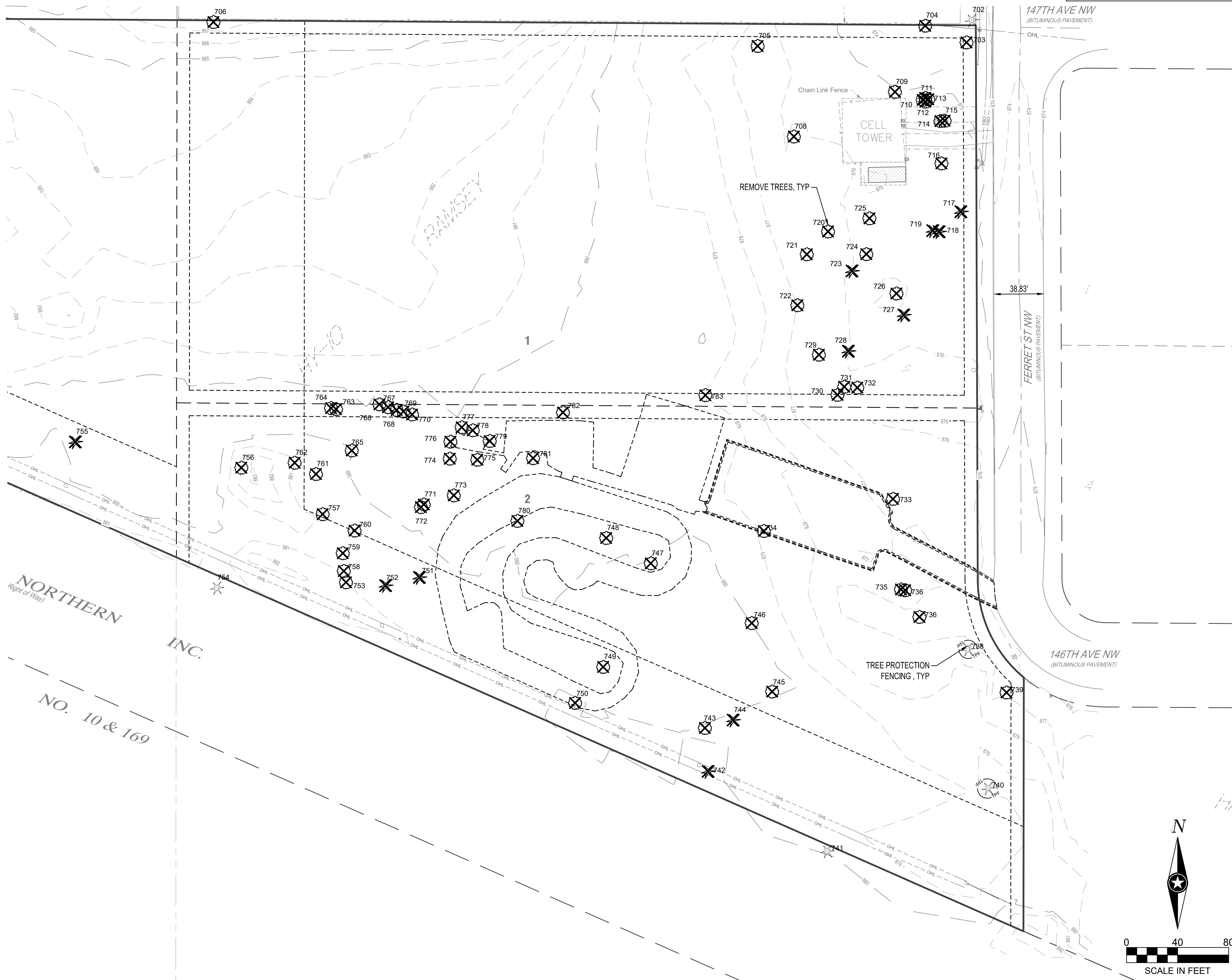
PT	TYPE	DIA	CONDITION	STATUS	REASON FOR REMOVAL
702	WHITE SPRUCE	8"	GOOD	REMAIN	-
703	SIBERIAN ELM	9"	POOR	REMOVE	INVASIVE
704	SIBERIAN ELM	8"	GOOD	REMOVE	INVASIVE
705	SIBERIAN ELM	11"	FAIR	REMOVE	INVASIVE
706	SIBERIAN ELM	15"	GOOD	REMOVE	INVASIVE
707	BOXELDER	16"	GOOD	REMAIN	-
708	SIBERIAN ELM	12"	FAIR	REMOVE	INVASIVE
709	SIBERIAN ELM	9"	GOOD	REMOVE	INVASIVE
710	SIBERIAN ELM	13"	FAIR	REMOVE	INVASIVE
711	SIBERIAN ELM	11"	FAIR	REMOVE	INVASIVE
712	SIBERIAN ELM	8"	FAIR	REMOVE	INVASIVE
713	SIBERIAN ELM	9"	FAIR	REMOVE	INVASIVE
714	SIBERIAN ELM	22"	GOOD	REMOVE	INVASIVE
715	SIBERIAN ELM	26"	GOOD	REMOVE	INVASIVE
716	SIBERIAN ELM	10"	FAIR	REMOVE	INVASIVE
717	EASTERN RED CEDAR	9"	GOOD	REMOVE	EARTHWORK
718	EASTERN RED CEDAR	7"	GOOD	REMOVE	EARTHWORK
719	EASTERN RED CEDAR	7"	GOOD	REMOVE	EARTHWORK
720	SIBERIAN ELM	10"	FAIR	REMOVE	INVASIVE
721	SIBERIAN ELM	13"	FAIR	REMOVE	INVASIVE
722	SIBERIAN ELM	8"	FAIR	REMOVE	INVASIVE
723	EASTERN RED CEDAR	4"	GOOD	REMOVE	EARTHWORK
724	SIBERIAN ELM	8"	FAIR	REMOVE	INVASIVE
725	SIBERIAN ELM	10"	FAIR	REMOVE	INVASIVE
726	SIBERIAN ELM	11"	FAIR	REMOVE	INVASIVE
727	EASTERN RED CEDAR	7"	GOOD	REMOVE	EARTHWORK
728	EASTERN RED CEDAR	11"	GOOD	REMOVE	EARTHWORK
729	SIBERIAN ELM	9"	FAIR	REMOVE	INVASIVE
730	SIBERIAN ELM	15"	POOR	REMOVE	INVASIVE
731	SIBERIAN ELM	10"	FAIR	REMOVE	INVASIVE
732	SIBERIAN ELM	10"	FAIR	REMOVE	INVASIVE
733	SIBERIAN ELM	12"	FAIR	REMOVE	INVASIVE
734	SIBERIAN ELM	10"	FAIR	REMOVE	INVASIVE
735	SIBERIAN ELM	10"	FAIR	REMOVE	INVASIVE
736	SIBERIAN ELM	9"	FAIR	REMOVE	INVASIVE
737	SIBERIAN ELM	12"	FAIR	REMOVE	INVASIVE
738	EASTERN RED CEDAR	12"	GOOD	REMAIN	-
739	SIBERIAN ELM	10"	FAIR	REMOVE	INVASIVE
740	EASTERN RED CEDAR	12"	GOOD	REMAIN	-
741	EASTERN RED CEDAR	4"	GOOD	REMAIN	-
742	EASTERN RED CEDAR	6"	POOR	REMOVE	EARTHWORK
743	SIBERIAN ELM	8"	GOOD	REMOVE	INVASIVE
744	SIBERIAN ELM	14"	GOOD	REMOVE	INVASIVE
745	SIBERIAN ELM	15"	FAIR	REMOVE	INVASIVE
746	SIBERIAN ELM	8"	GOOD	REMOVE	INVASIVE
747	SIBERIAN ELM	8"	FAIR	REMOVE	INVASIVE
748	SIBERIAN ELM	10"	GOOD	REMOVE	INVASIVE
749	SIBERIAN ELM	11"	FAIR	REMOVE	INVASIVE
750	SIBERIAN ELM	10"	FAIR	REMOVE	INVASIVE
751	EASTERN RED CEDAR	15"	GOOD	REMOVE	EARTHWORK
752	EASTERN RED CEDAR	4"	FAIR	REMOVE	EARTHWORK
753	SIBERIAN ELM	11"	GOOD	REMOVE	INVASIVE
754	EASTERN RED CEDAR	5"	GOOD	REMAIN	-
755	EASTERN RED CEDAR	8"	GOOD	REMOVE	EARTHWORK
756	SIBERIAN ELM	11"	FAIR	REMOVE	INVASIVE
757	WHITE ASH	17"	GOOD	REMOVE	EARTHWORK
758	CHERRY BLACK	9"	GOOD	REMOVE	EARTHWORK
759	CHERRY BLACK	10"	GOOD	REMOVE	EARTHWORK
760	ASH WHITE	14"	GOOD	REMOVE	EARTHWORK
761	SILVER MAPLE	12"	GOOD	REMOVE	EARTHWORK
762	WHITE ASH	12"	GOOD	REMOVE	EARTHWORK
763	SIBERIAN ELM	11"	FAIR	REMOVE	INVASIVE
764	SIBERIAN ELM	9"	FAIR	REMOVE	INVASIVE
765	WHITE ASH	13"	GOOD	REMOVE	EARTHWORK
766	AMUR MAPLE	12"	FAIR	REMOVE	INVASIVE
767	AMUR MAPLE	10"	FAIR	REMOVE	INVASIVE
768	AMUR MAPLE	10"	FAIR	REMOVE	INVASIVE
769	AMUR MAPLE	10"	FAIR	REMOVE	INVASIVE
770	AMUR MAPLE	10"	FAIR	REMOVE	INVASIVE
771	EASTERN COTTONWOOD	8"	FAIR	REMOVE	EARTHWORK
772	EASTERN COTTONWOOD	20"	EXCELLENT	REMOVE	EARTHWORK
773	SIBERIAN ELM	8"	POOR	REMOVE	INVASIVE
774	NORTHERN RED OAK	12"	GOOD	REMOVE	EARTHWORK
775	NORTHERN RED OAK	13"	GOOD	REMOVE	EARTHWORK
776	PAPER BIRCH	12"	GOOD	REMOVE	EARTHWORK
777	PAPER BIRCH	10"	GOOD	REMOVE	EARTHWORK
778	PAPER BIRCH	8"	GOOD	REMOVE	EARTHWORK
779	PAPER BIRCH	8"	POOR	REMOVE	EARTHWORK
780	SIBERIAN ELM	8"	FAIR	REMOVE	INVASIVE
781	SIBERIAN ELM	12"	FAIR	REMOVE	INVASIVE
782	SIBERIAN ELM	8"	FAIR	REMOVE	INVASIVE
783	SIBERIAN ELM	8"	FAIR	REMOVE	INVASIVE

TREE REMOVAL INVENTORY:

- TOTAL INCHES EXISTING = 865"
- TOTAL INCHES REMOVED = 808"
- TOTAL INCHES OF INVASIVE SPECIES BEING REMOVED = 500"

REMOVAL LEGEND	
SYMBOL	DESCRIPTION
	REMOVE DECIDUOUS TREE (CLEAR AND GRUB)
	REMOVE CONIFEROUS TREE (CLEAR AND GRUB)

CONTRACTOR SHALL VERIFY EXISTING PAVEMENT SECTION AND NOTIFY ENGINEER OF ANY DISCREPANCIES. PAVEMENT REMOVALS SHALL INCLUDE FULL DEPTH SAWCUT AND SECTION REMOVAL.



NOTE: THE CLARITY OF THESE PLANS DEPEND UPON COLOR COPIES. IF THIS TEXT DOES NOT APPEAR IN COLOR, THIS IS NOT AN ORIGINAL PLAN SET AND MAY RESULT IN MISINTERPRETATION.

I HEREBY CERTIFY THAT THIS PLAN, SPECIFICATION OR REPORT WAS PREPARED BY ME OR UNDER MY DIRECT SUPERVISION AND THAT I AM A DULY LICENSED PROFESSIONAL ENGINEER UNDER THE LAWS OF THE STATE OF MINNESOTA.
REESE A. SUDELGTE

DATE: 12/15/2022 LIC. NO. 54243

I HEREBY CERTIFY THAT THIS PLAN, SPECIFICATION OR REPORT WAS PREPARED BY ME OR UNDER MY DIRECT SUPERVISION AND THAT I AM A DULY LICENSED ARCHITECT UNDER THE LAWS OF THE STATE OF MINNESOTA.
MITCHELL R. WORKMON

DATE: 12/15/2022 LIC. NO. 53748

THIS DOCUMENT IS THE PROPERTY OF I & S GROUP, INC. AND MAY NOT BE USED, COPIED OR DUPLICATED WITHOUT PRIOR WRITTEN CONSENT.

PROJECT
ANOKA RAMSEY ATHLETIC ASSOCIATION NEW DOME

RAMSEY MINNESOTA

REVISION SCHEDULE		
DATE	DESCRIPTION	BY

PROJECT NO. 22-26051
FILE NAME 26051 C2-EXIST
DRAWN BY AJR
DESIGNED BY AJR
REVIEWED BY RAS
ORIGINAL ISSUE DATE 12/16/2022
CLIENT PROJECT NO. -

TITLE
TREE INVENTORY AND PRESERVATION PLAN

SHEET
C2-11

PRELIMINARY NOT FOR CONSTRUCTION