

LEGEND

- FOUND 1/2 INCH OPEN IRON MONUMENT UNLESS SHOWN OTHERWISE
- ✱ FOUND REBAR
- SET 1/2 INCH X 14 INCH IRON MONUMENT, MARKED "LS 53442"
- HAND HOLE
- LIGHT POLE
- ⊕ SIGN
- UNDERGROUND UTILITY MARKER
- PARTIAL TOPOGRAPHY LIMITS
- ▬ CONCRETE CURB
- CONTOUR
- SPOT ELEVATION
- ☼ CONIFEROUS TREE
- ☼ DECIDUOUS TREE

TREE INVENTORY

TREE #	SPECIES	DIAMETER AT BREAST HEIGHT	STEMS	CONDITION
1	Elm, Siberian	9	3	Fair
2	Elm, Siberian	8	1	Fair
3	Cedar, red	4	1	Good
4	Boxelder	10	3	Fair
5	Elm, Siberian	17	2	Fair
6	Elm, Siberian	8	1	Fair
7	Elm, Siberian	11	1	Fair
8	Cedar, red	4.5	1	Good
9	Elm, Siberian	9	1	Good
10	Elm, Siberian	12	1	Good
11	Elm, Siberian	10	1	Fair
12	Elm, Siberian	10.5	1	Fair
13	Elm, Siberian	12	1	Good
14	Elm, Siberian	11	1	Fair
15	Elm, Siberian	9.5	1	Good
16	Elm, Siberian	10	1	Fair
17	Elm, Siberian	12.5	1	Fair
18	Elm, Siberian	13.5	1	Fair
19	Elm, Siberian	10	3	Fair
20	Elm, Siberian	16	1	Good
21	Elm, Siberian	14	1	Good
22	Elm, Siberian	9	1	Good
23	Elm, Siberian	9	1	Fair
24	Elm, Siberian	8.5	1	Good
25	Elm, Siberian	8	1	Good
26	Elm, Siberian	12	3	Fair
27	Elm, Siberian	10.5	1	Good



CADD QUALIFICATION

CADD files prepared by the Consultant for this project are prepared by the Consultant professional services for use solely with respect to this project. These CADD files shall not be used on other projects, for additions to this project, or for completion of this project by others without written approval by the Consultant, with the Consultant's approval, others may be permitted to obtain copies of the CADD drawing files for information and reference only. All intellectual or contractual matters, additions, or deletions to these CADD files shall be made in the field or by email reading such matters, additions or deletions and the user shall hold harmless and indemnify the Consultant from any & all responsibilities, claims, and liabilities.

SUBMITTAL/REVISIONS

DATE	DESCRIPTION
04/13/23	TREE INVENTORY

PROFESSIONAL SIGNATURE

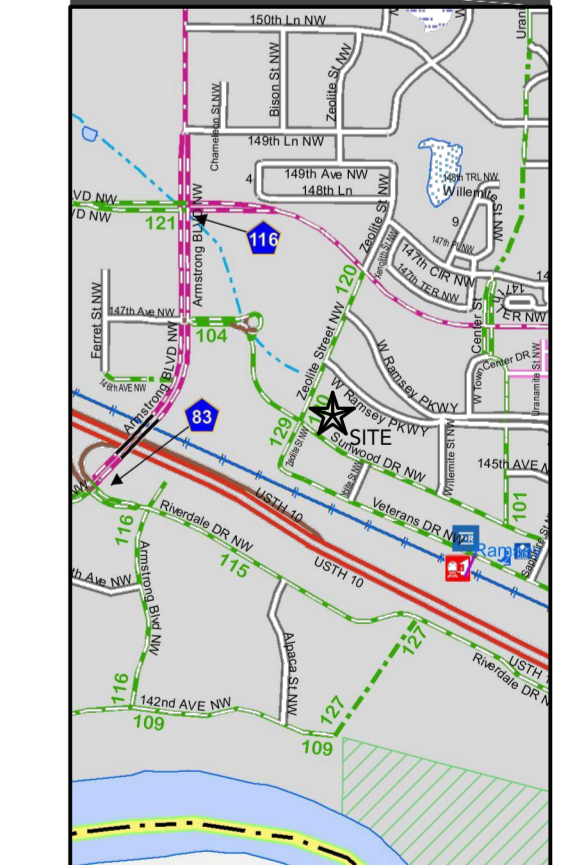
I hereby certify that this survey, plan or report was prepared by me or under my direct supervision and that I am a duly Licensed Land Surveyor under the laws of the State of Minnesota.

Janet Auerbach
Janet J. Auerbach - PLS
License No. 53642
Date 03/28/23

QUALITY CONTROL

Loucks Project No. 23024A
Project Lead JJA
Drawn By SEK
Checked By JJA
Field Crew DJP

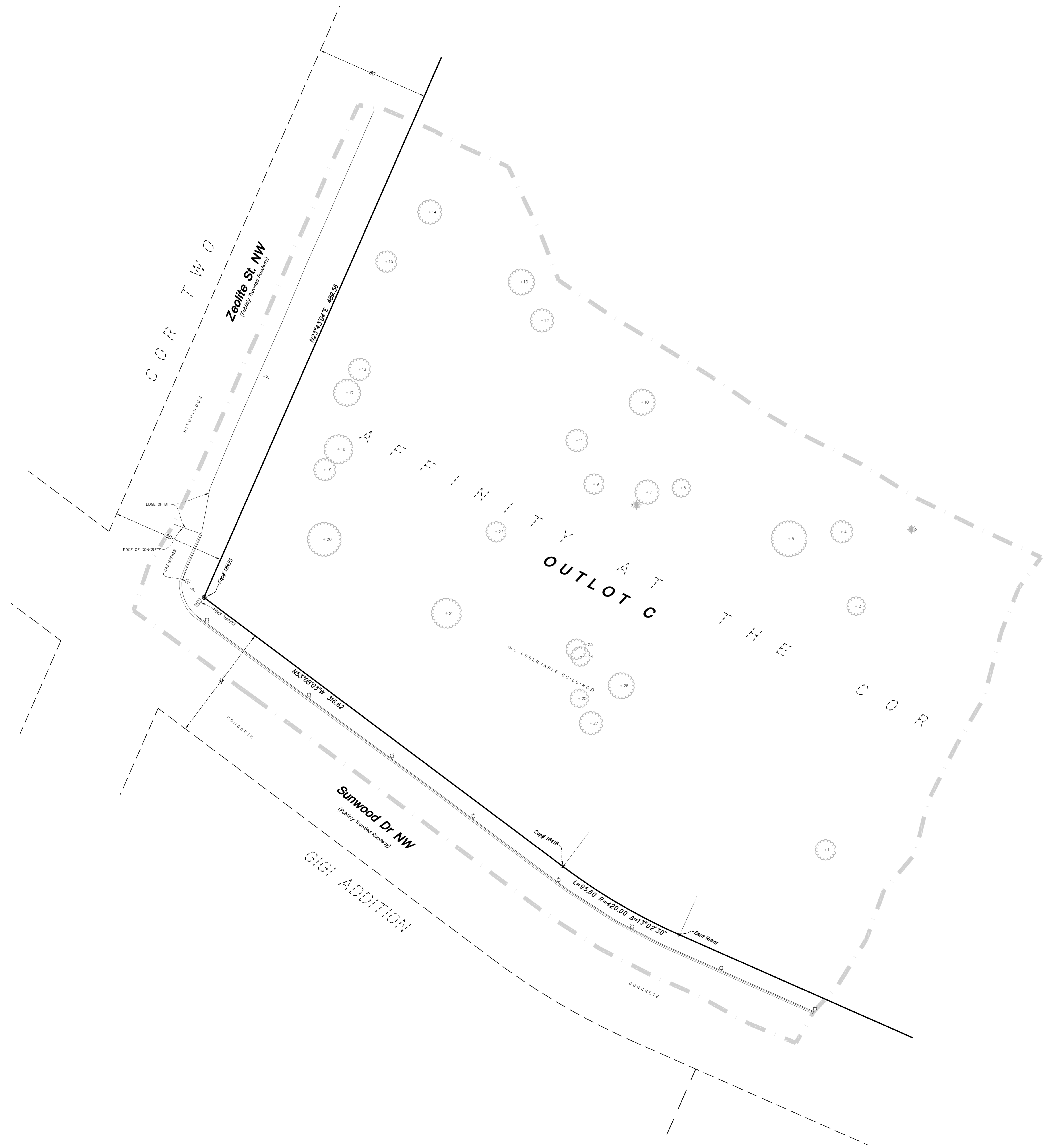
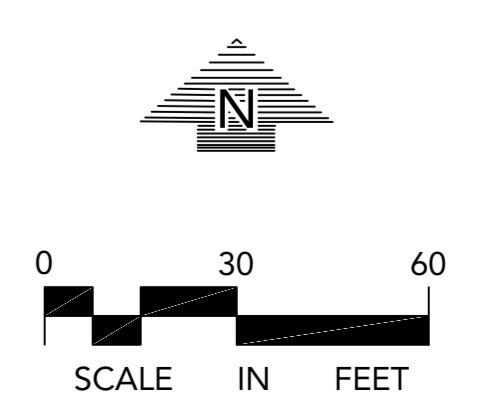
VICINITY MAP



TREE INVENTORY

SURVEY REPORT

- The bearings for this survey are based on the Anoka County Coordinate System NAD 83 (1996 Adjust).
- Trees shown hereon are measured at breast height.
- The trees shown hereon were identified and field located to sub-meter accuracy by Stephen Nicholson, a Certified Arborist and Forester with Treebiz on 04/12/23.
- See sheets 1 and 2 for boundary and partial topographic survey.



1 - More Information Needed

Created by: Chris Anderson
On: 04/21/2023 02:35 PM

Please add the following information to the Tree Inventory Table:
Total DBH inches
Total Invasive inches
Status (e.g. save or remove)

----- 0 Replies -----