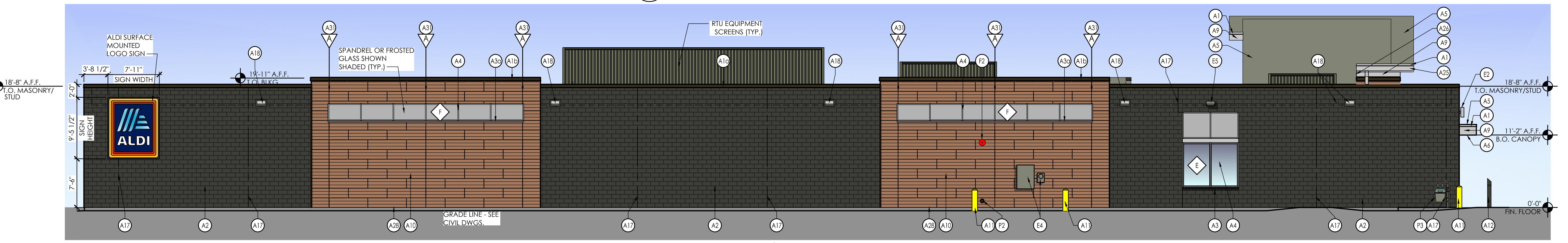
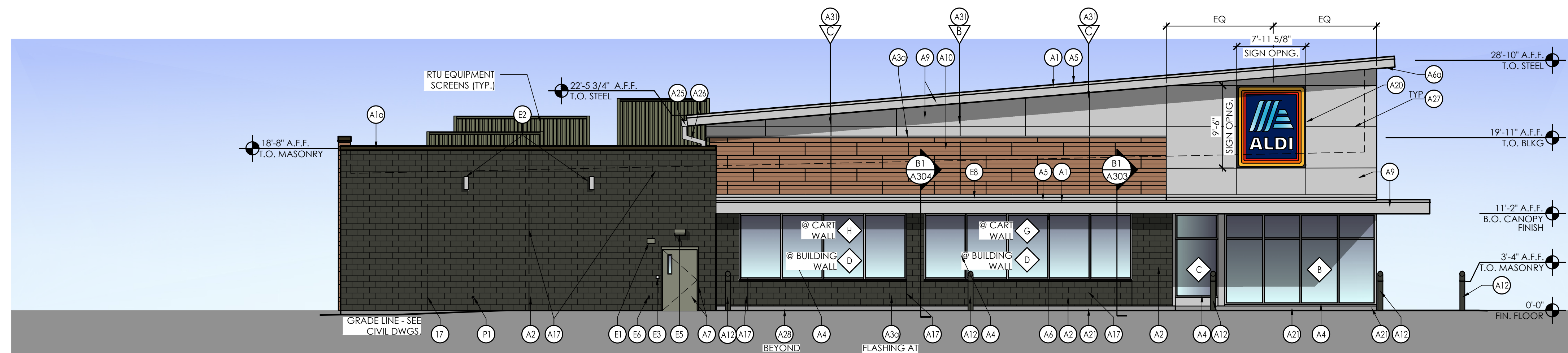


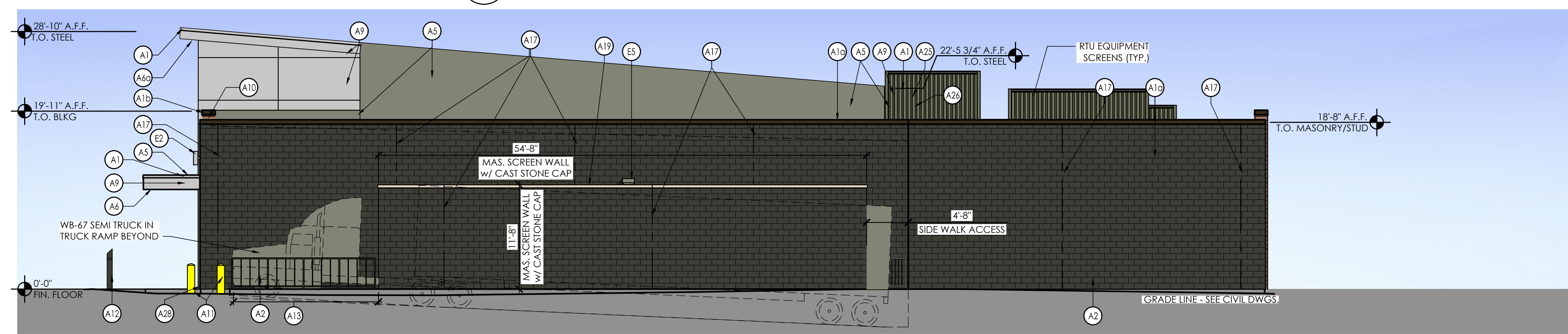
4 West Elevation
SCALE: 1/8" = 1'-0"



3 East Elevation
SCALE: 1/8" = 1'-0"



2 North Elevation
SCALE: 1/8" = 1'-0"



1 South Elevation
SCALE: 1/8" = 1'-0"

CEE-2 SIGNAGE			
DESCRIPTION	QUANTITY	SQ. FT. PER SIGN	TOTALS
TOWER SIGN	2	74.9	149.8
SURF. MOUNTED LOGO SIGN	1	74.9	74.9
TOTAL SIGNAGE			224.7

SIGNAGE IS SHOWN FOR REFERENCE ONLY AND SHALL BE UNDER SEPARATE PERMIT SUBMITTAL

Issued:	Date:
A Issued for Use Client Review	07/25/22
B Issued for Use Client Review	09/02/22
C Issued for Use Client Review	09/07/22
D Issued for Use Client Review	05/08/23
E	

Revisions:	Date:
1	
2	
3	
4	
5	
6	
7	
8	
9	

Seal PROJECT ARCHITECT/ENGINEER DATE

Seal PROJECT LEAD DATE

PROJECT DESIGNER DATE

Copyright © 2022
APD Engineering & Architecture
11111 11111
11111 11111
11111 11111

Drawing Alteration
It is a violation of law for any person, unless acting under the direction of licensed Architect, Professional Engineer, Landscape Architect, or Land Surveyor to alter any item on this document in any way. Any licensee who offers this document is required by law to affix his or her seal and to add the notation "Altered By" followed by his or her signature and the specific description of the alteration or revision.

DO NOT SCALE PLANS
Copying, Printing, Software and other processes required to produce these prints can stretch or shrink the actual paper or layout. Therefore, scaling of this drawing may be inaccurate. Contact APD E&A with any need for additional dimensions or clarifications.

APD ENGINEERING ARCHITECTURE
615 Fishers Run Victor, NY 14564
585.742.2222 - www.apd.com

ALDI Inc.
4201 Bagley Avenue North
Faribault, MN 55021
(507) 333-9469
(507) 333-9475 fax

ALDI Inc. Store #: XX
Ramsey, MN

Ramsey, MN
Anoka County
Project Name & Location:

Exterior Elevations
Drawing Name:

Date: 07/22/22
Type: RHSDV7ER
Drawn By: CB
Scale: As Noted

Project No.
23-0230A
CEE-4
Drawing No.

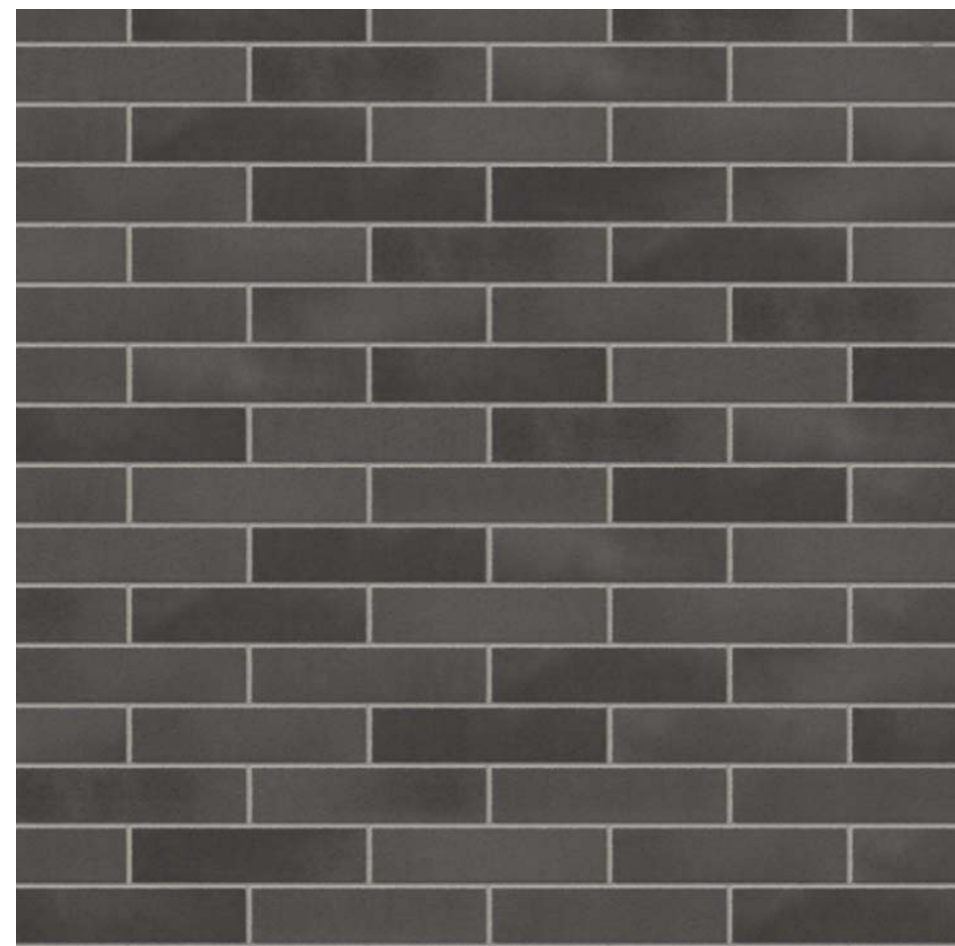


ALDI - Prototype Color Palette



Dark

Masonry:



Spec-Brik: Chesapeake Blend

Metal Coping:



At High Roof & Canopy: Silver



At Brick: Musket Gray



At Nichiha Towers: Cedar

Nichiha Panels:



Exterior Cladding: Cedar



Base Flashing: Cedar

Aluminum Composite Panel:



Bright Silver

Aluminum Sill:



Bright Silver



Cedar

EXTERIOR FINISH SCHEDULE			
KEY	MATERIAL / MFG.	COLOR / NO.	NOTES
A1	PREFINISHED METAL COPING	A1- SILVER - AT HIGH ROOF & CANOPY A1a - PETERSEN ALUM - MUSKET GREY-AT BRICK A1b - PETERSEN ALUM - #CEDAR 397C0290 SPRAY CODE - AT NICHHA TOWERS	SEE SPECIFICATIONS APPENDIX 'B'
A2	BASE BID (BRICK 'A') SPEC-BRICK CONCRETE MASONRY VENEER	4WX8HX16 CHESAPEAKE BLEND w/ HOLCIM "SMITH GRAY" MORTAR MORTAR ALT: SOLOMON "85X DARK CHOCOLATE"	CONTACT THE CONCRETE PRODUCTS GROUP AT 800-789-0872 FOR ORDERING SEE SPEC FOR ADDITIONAL INFO
	ALTERNATE No. 2 (BRICK 'B') QUIK-BRICK CONCRETE MASONRY VENEER	4WX8HX16 MAROUS BLEND w/ HOLCIM "SMITH GRAY" MORTAR MORTAR ALT: SOLOMON "85X DARK CHOCOLATE"	CONTACT ECHELON MASONRY AT 800-899-8455 FOR ORDERING SEE SPEC FOR ADDITIONAL INFO
	ALTERNATE No.3 (BRICK 'C') BELDEN BRICK	MODULAR EBONY BLACK BLEND w/ HOLCIM "SMITH GRAY" MORTAR MORTAR ALT: SOLOMON "85X DARK CHOCOLATE"	CONTACT THE BELDEN BRICK COMPANY AT 330-451-2031 FOR ORDERING SEE SPEC FOR ADDITIONAL INFO
A3	PREFINISHED ALUM. SILL FLASHING	A3 - BRIGHT SILVER A3a - PETERSEN ALUM # "CEDAR 397C0290 SPRAY CODE"	
A4	ALUMINUM STOREFRONT SYSTEM	ANODIZED ALUM.	RE: DWG. A602
A5	MEMBRANE ROOFING	GRAY	TOP OF SLOPED ROOF, CANOPY ROOF, AND BACK OF RAISED ROOF PROJECTIONS - SEE SPECIFICATIONS APPENDIX 'B'
A6	METAL SOFFIT PANELS	A6 - SOLID PANELS - SILVER METALLIC A6a - 1/2 VENTED PANELS - SILVER METALLIC	RE: DWG. A301-A304
A7	EXTERIOR PAINT		RE: DWG. A603
A8	NOT USED		
A9	ALUMINUM COMPOSITE PANEL	BRIGHT SILVER	PROVIDE PANEL JOINTS AS SHOWN - PROVIDE ONE PIECE TIGHT FIT EXTRUDED MOLDING INSTALLATION SYSTEM WITH CENTER REVEAL TRIM BETWEEN PANELS AND J TRIM AT PANEL EDGES.
A10	NICHHA FIBER CEMENT EXTERIOR CLADDING	VINTAGEWOOD 'CEDAR'	PANELS SHALL EXTEND ONTO THE ROOF FOR THE FULL DEPTH OF THE BUMPOUT. CONTACT NICHHA AT 770-805-9466 FOR ORDERING. SEE SPEC FOR TRIM REQUIREMENTS AND ADDITIONAL INFO. ALL INCLUDED TRIM ('H', 'J', 'L', CORNER, ETC) TO MATCH FCP
A11	BLRD-2	PT-19 / CL-4	RE: DWG A603
A12	BLRD-4		RE: DWG A603
A13	GUARD RAIL TYPE "A"	GALVANIZED STEEL	RE: DWG B2/A507
A14	GUARD RAIL TYPE "B"	GALVANIZED STEEL	RE: DWG B2/A507
A15	BLRD-3	GALVANIZED	RE: DWG A603
A16	DOCK LEVELER / SEAL AND BUMPERS	LEVELER - FACTORY FINISH / SEAL AND BUMPERS - FACTORY FINISH - BLACK	PROVIDE BRICK BEHIND DOCK SEAL
A17	MASONRY CONTROL JOINT		MAX 20' OC
A18	SCUPPER, 1/8" OVERFLOW SCUPPER, COLLECTOR & DOWN SPOUT (SEE PLUMBING DWGS)	MATCH COPING ABOVE	RE: DWG A2/A507
A19	ARCHITECTURAL CAST STONE	TANNERSTONE: AG-1	SEE SPEC FOR ADDITIONAL INFORMATION - MORTAR COLOR TO MATCH CAST STONE
A20	ALDI TOWER SIGN	BY SIGN VENDOR	7'-11 1/8" w. x 9'-5 1/2" h.; VERIFY SIGN SIZE PRIOR TO FRAMING OPENING SEE DETAIL C1/A504
A21	CRTB	NATURAL	RE: DWG A603 - SEE STRUCTURAL DWGS

EXTERIOR FINISH SCHEDULE			
KEY	MATERIAL / MFG.	COLOR / NO.	NOTES
A22	KNOX BOX	FACTORY FINISH	CONFIRM TYPE AND LOCATION WITH LOCAL FIRE MARSHAL
A23	AUTO DOOR SYSTEM & TRANSOM	ANODIZED ALUMINUM	RE: DWG A601 & A602
A24	NOT USED		
A25	8" X 8" PRE-FINISHED ALUM GUTTER	MATCH PREFINISHED METAL COPING	
A26	8" X 8" PRE-FINISHED ALUM DOWNSPOUT	MATCH PREFINISHED METAL COPING	TERMINATE AT CONC. SPLASH BLOCK
A27	ACP H/J TRIM / JOINT COVER		TYPICAL AT EDGES AND BUTT JOINTS OF ACP
A28	NICHHA FIBER CEMENT PANEL BASE FLASHING	PETERSEN ALUMINUM - #CEDAR 397C0290 SPRAY CODE	SEE SPEC FOR ADDITIONAL INFO
A29	NOT USED		
A30	DUMPSTER ENCLOSURE	WINCHESTER GREY	RE: DWG A507
A31	NICHHA CONTROL JOINT WITH "H" CLIP		
A32	NOT USED		
A33	NOT USED		
E1	EXIT DISCHARGE LIGHT	FACTORY FINISH	MOUNT @ 8'-0" A.F.F.
E2	WALL SCONCE	FACTORY FINISH	MOUNT @ 14'-8" A.F.F.; RE: DWG. A111 FOR DIMENSIONS
E3	JUNCTION BOX WITH COVER FOR FUTURE CARD READER		MOUNT CENTERED @ 46" A.F.F., SEE ELEC DWGS
E4	UTILITY METERING & C.T.	FACTORY FINISH	SEE ELECTRICAL DWGS
E5	EXTERIOR WALL PACK	FACTORY FINISH	MAN DOORS - MOUNT @ 9'-0" A.F.F., BREAK ROOM WINDOW @ 10'-0" A.F.F. LOADING DOCK - MOUNT @ 12'-0" A.F.F.
E6	EXTERIOR DUPLEX RECEPTACLE	FACTORY FINISH	MOUNT @ 1'-6" A.F.F. IN 4" SQUARE J-BOX
E7	NOT USED		
E8	EXTERIOR UPLIGHTING FIXTURES	FACTORY FINISH	SEE ELEC DWGS
F1	FIRE DEPT. CONNECTION	FACTORY FINISH	SEE FIRE PROTECTION DWGS
F2	MOTOR GONG	FACTORY FINISH	SEE FIRE PROTECTION DWGS
P1	HOSE BIB	FACTORY FINISH	SEE PLUMBING DWGS
P2	RPZ DISCHARGE	FACTORY FINISH	SEE PLUMBING DWGS
P3	GAS METER	FACTORY FINISH	SEE PLUMBING DWGS
XX	GLAZING KEY		RE: DWG A602
WV	ALIGN KEY		A: ALIGN NICHHA PANEL JOINTS AND WINDOW MULLIONS B: ALIGN ALUMINUM COMPOSITE PANEL JOINTS AND NICHHA PANEL JOINTS C: ALIGN NICHHA PANEL JOINTS, ALUMINUM COMPOSITE PANEL JOINTS, AND WINDOW MULLIONS

Issued:	Date:
A Issued for Use Client Review	07/25/22
B Issued for Use Client Review	09/02/22
C Issued for Use Client Review	09/07/22
D Issued for Use Client Review	05/08/23
E	

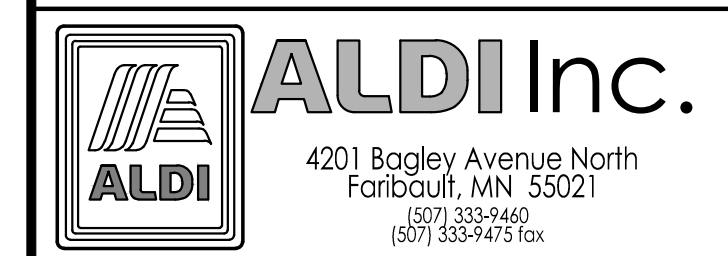
Revisions:	Date:
1	
2	
3	
4	
5	
6	
7	
8	
9	

Seal	Seal
PROJECT ARCHITECT/ENGINEER	DATE
PROJECT LEAD	DATE
PROJECT DESIGNER	DATE

Copyright © 2022
APD Engineering & Architecture
Drawing Alteration
It is a violation of law for any person, unless acting under the
direction of licensed Architect, Professional Engineer, Landscape
Architect, or Land Surveyor to alter any item on this document in any
way. Any licensee who offers this document is required by law to affix
his or her seal and to add the notation "Altered By:" followed by his or
her signature and the specific description of the alteration or revision.

DO NOT SCALE PLANS

Copying, Printing, Software and other processes required to produce
these prints can stretch or shrink the actual paper or layout.
Therefore, scaling of this drawing may be inaccurate. Contact APD
E&A with any need for additional dimensions or clarifications.



ALDI Inc. Store #: XX
Ramsey, MN

Ramsey, MN
Anoka County
Project Name & Location:

Exterior
Finish Schedule
Drawing Name:

Date: 07/22/22	Project No.
Type: RHSDV7ER	23-0230A
Drawn By: CB	
Scale: As Noted	Drawing No.