

Aug 08, 2023 - 9:55am
 K:\PRIVATE\3395.21\ENGINEERING\PLAN DWG\339521_EXISTING.dwg



DATE	REVISION
8/8/23	PLAN REVISIONS PER CITY REVIEW

I hereby certify that this plan, specification, or report was prepared by me or under my direct supervision and that I am a duly Licensed Professional Engineer under the laws of the State of Minnesota.

Timothy A. Eggen
 TIMOTHY A. EGGEN, P.E.
 Date 7/17/23 Lic. No. 43362

DESIGNED BY: TAE
 DRAWN BY: TAE
 CHECKED BY: CJJ



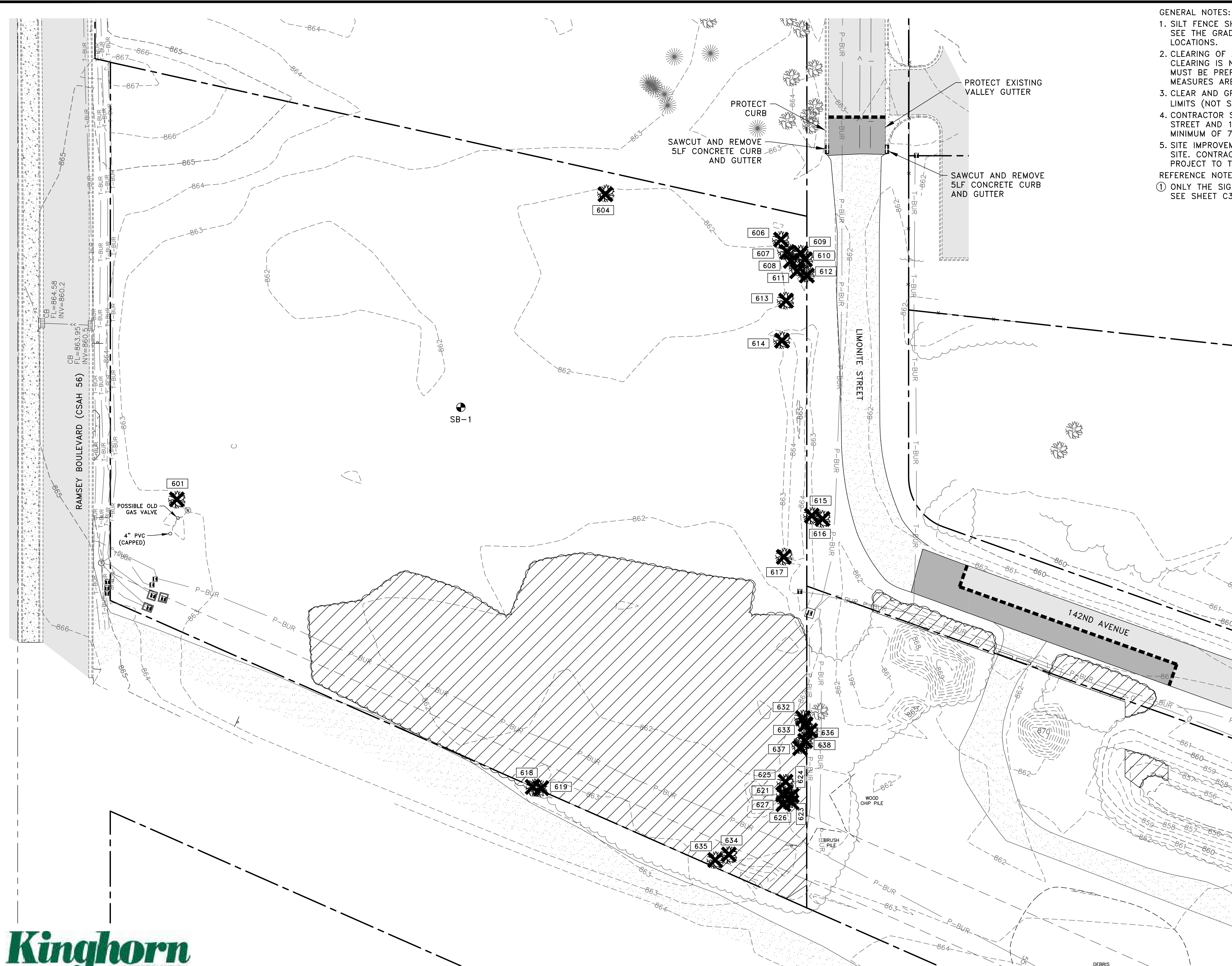
Hakanson Anderson
 Civil Engineers and Land Surveyors
 3601 Thurston Ave., Anoka, Minnesota 55303
 763-427-5860 FAX 763-427-0520
 www.hakanson-anderson.com

JAM HOPS

EXISTING TOPOGRAPHY AND
 REMOVALS PLAN
 CITY OF RAMSEY, MINNESOTA

SHEET
 C7
 OF
 C12
 SHEETS

3395.21

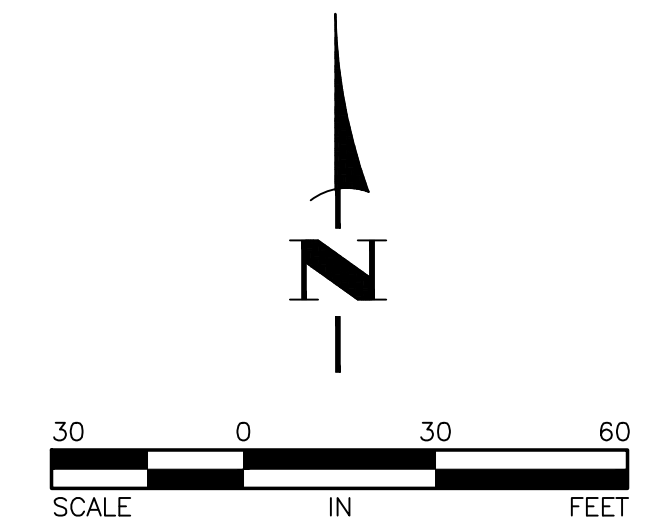


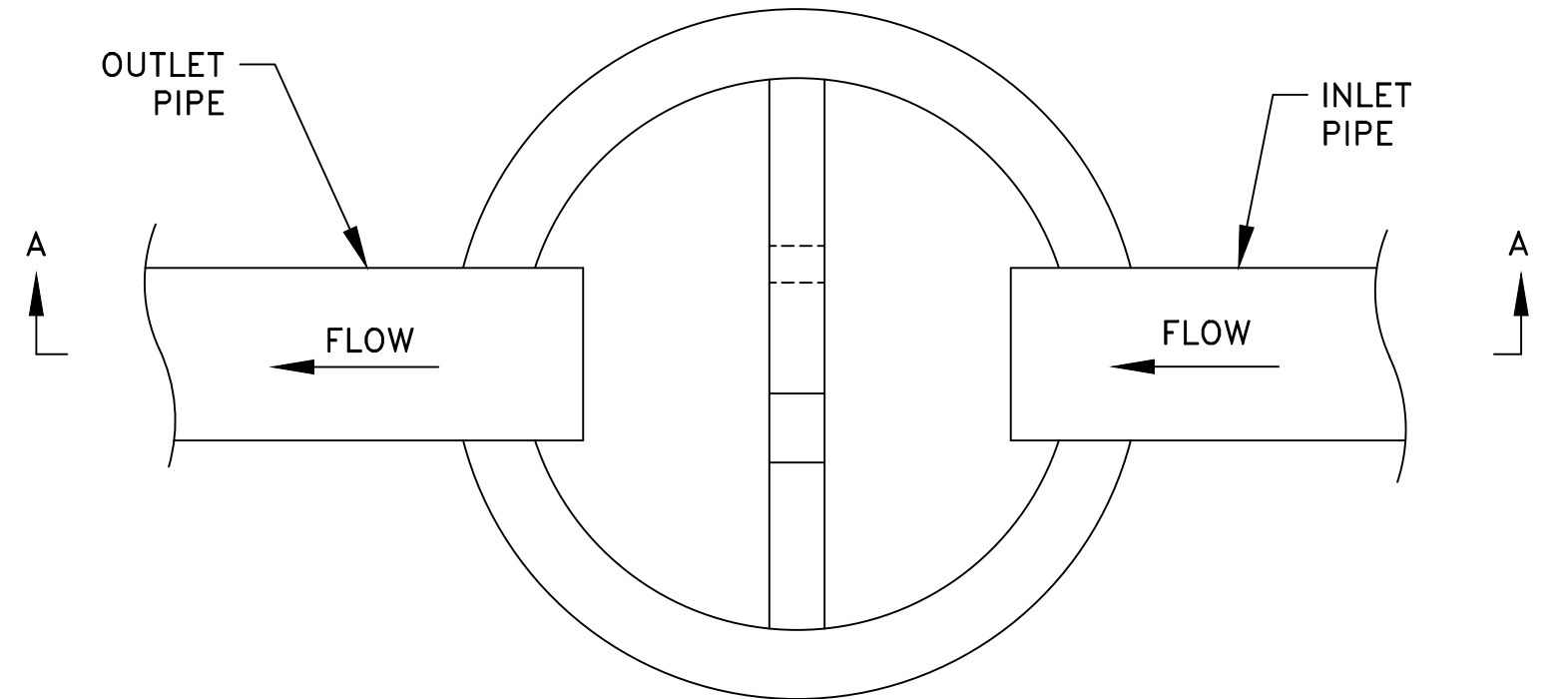
GENERAL NOTES:
 1. SILT FENCE SHALL BE IN PLACE PRIOR TO THE START OF ANY REMOVAL ACTIVITIES. SEE THE GRADING, DRAINAGE AND SEDIMENT CONTROL PLAN FOR SILT FENCE LOCATIONS.
 2. CLEARING OF ANY OAK TREES SHALL NOT OCCUR PRIOR TO JULY 15TH. IF OAK TREE CLEARING IS NECESSARY PRIOR TO JULY 15TH, AN OAK WILT MANAGEMENT PLAN MUST BE PREPARED AND SUBMITTED TO THE CITY FOR REVIEW TO ENSURE ADEQUATE MEASURES ARE IMPLEMENTED TO PROTECT FROM THE INTRODUCTION OF OAK WILT.
 3. CLEAR AND GRUB BRUSH, SHRUBS AND SMALL TREES WITHIN THE CONSTRUCTION LIMITS (NOT SHOWN).
 4. CONTRACTOR SHALL PREPARE A TRAFFIC CONTROL PLAN FOR THE WORK IN LIMONITE STREET AND 142ND AVENUE. PLAN SHALL BE SUBMITTED TO THE CITY OF RAMSEY A MINIMUM OF 7 DAYS PRIOR TO CONSTRUCTION.
 5. SITE IMPROVEMENTS ARE PLANNED FOR THE PROPERTY NORTH OF THE JAM HOPS SITE. CONTRACTOR SHALL COORDINATE THE LIMONITE STREET REMOVALS WITH THE PROJECT TO THE NORTH.

REFERENCE NOTES:
 ① ONLY THE SIGNIFICANT TREES, AS DEFINED BY THE CITY OF RAMSEY, ARE NUMBERED. SEE SHEET C3 FOR THE SIGNIFICANT TREE INVENTORY TABULATION.

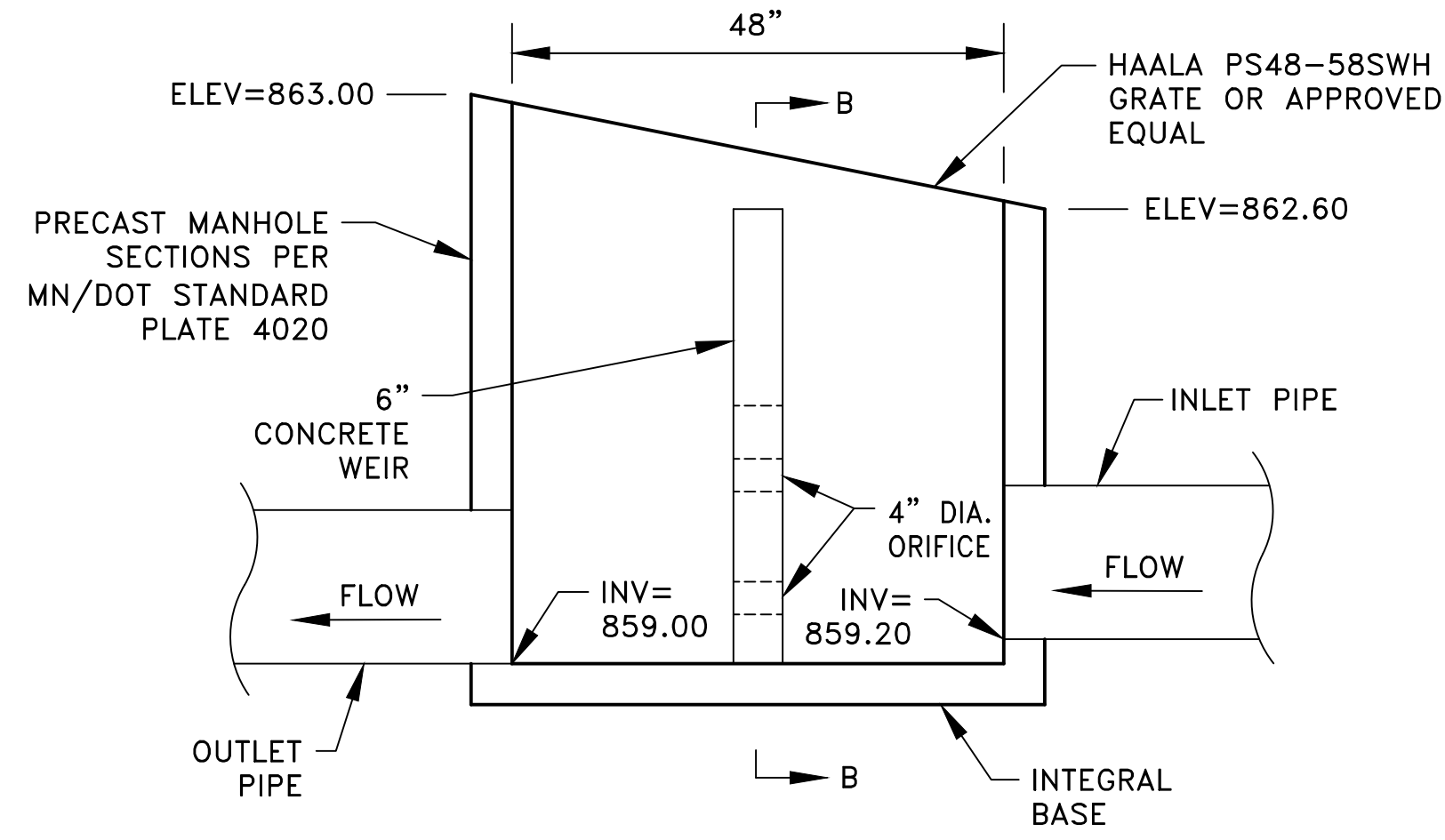
LEGEND

- PROPERTY LINE
- - - EASEMENT LINE
- - - SECTION LINE
- XXX --- EXISTING CONTOUR
- EXISTING CONCRETE CURB
- G --- GAS MAIN
- P-BUR --- BURIED ELECTRIC LINE
- T-BUR --- BURIED TELEPHONE LINE
- TV-BUR --- BURIED TELEVISION LINE
- FO-BUR --- BURIED FIBER OPTIC LINE
- I --- EXISTING WATERMAIN
- > --- EXISTING SANITARY SEWER
- >> --- EXISTING STORM SEWER
- x --- FENCE
- UTILITY PEDESTALS OR TRANSFORMERS
- ⊙ UTILITY MANHOLE
- ⊙ EXISTING WELL
- EXISTING CATCH BASIN
- ↑ SIGN
- ☀ DECIDUOUS AND CONIFEROUS TREES
- ⊙ SB-X APPROXIMATE SOIL BORING LOCATION
- EXISTING BITUMINOUS PAVEMENT
- EXISTING GRAVEL SURFACE
- REMOVE BITUMINOUS PAVEMENT
- CLEAR AND GRUB TREES AND BRUSH
- ☀ CLEAR AND GRUB TREES
- - - SAWCUT BITUMINOUS PAVEMENT
- XXX TREE NUMBER ①

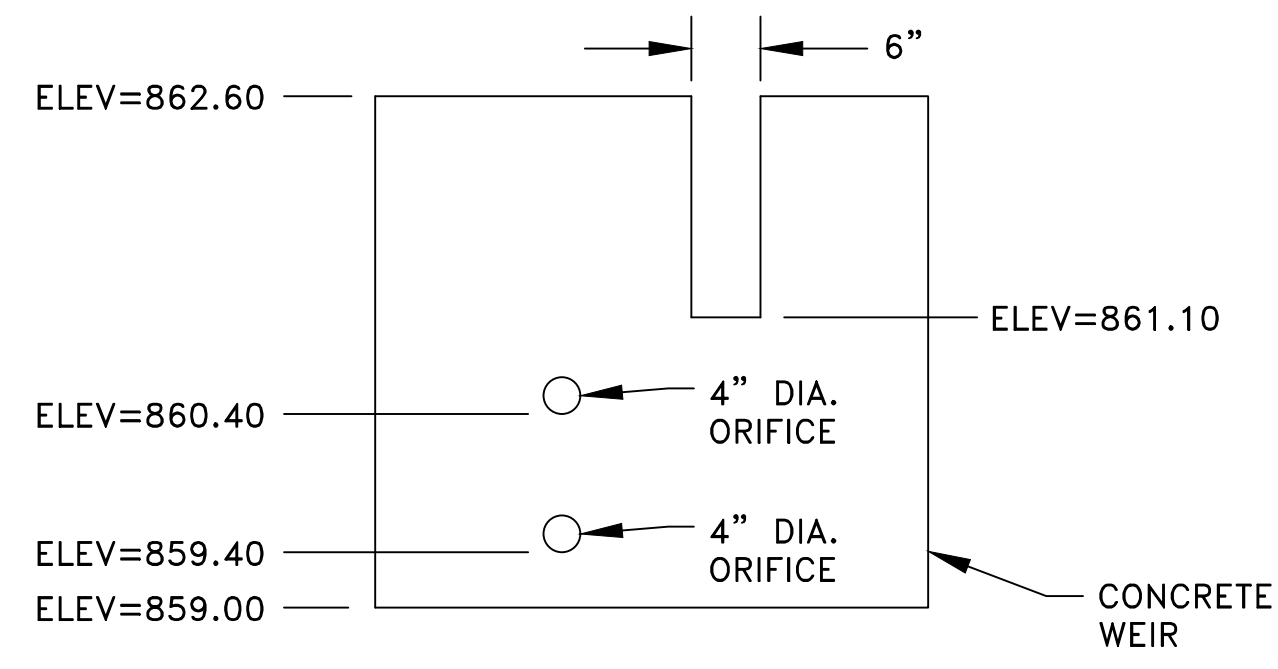




PLAN VIEW

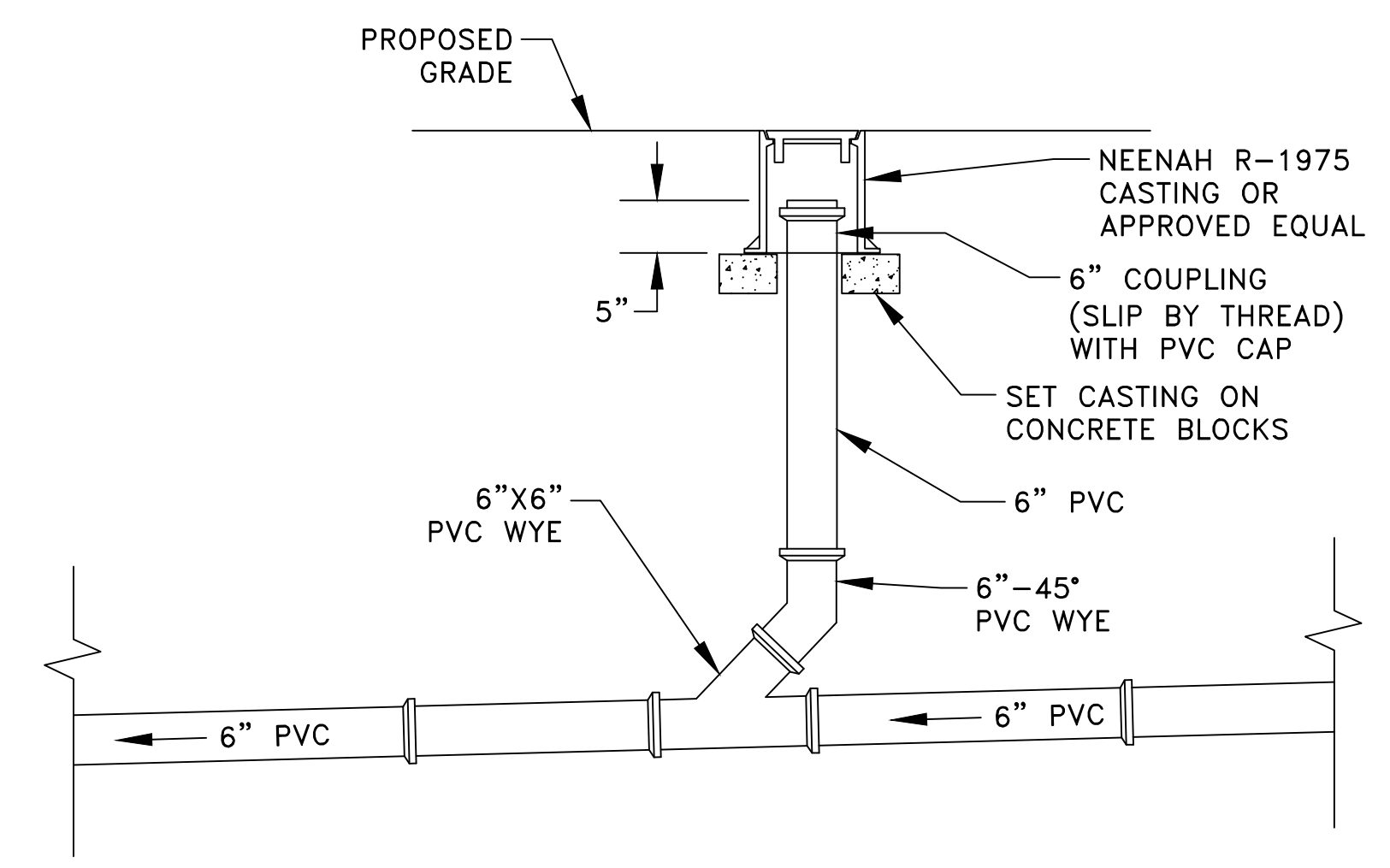


SECTION A-A



SECTION B-B

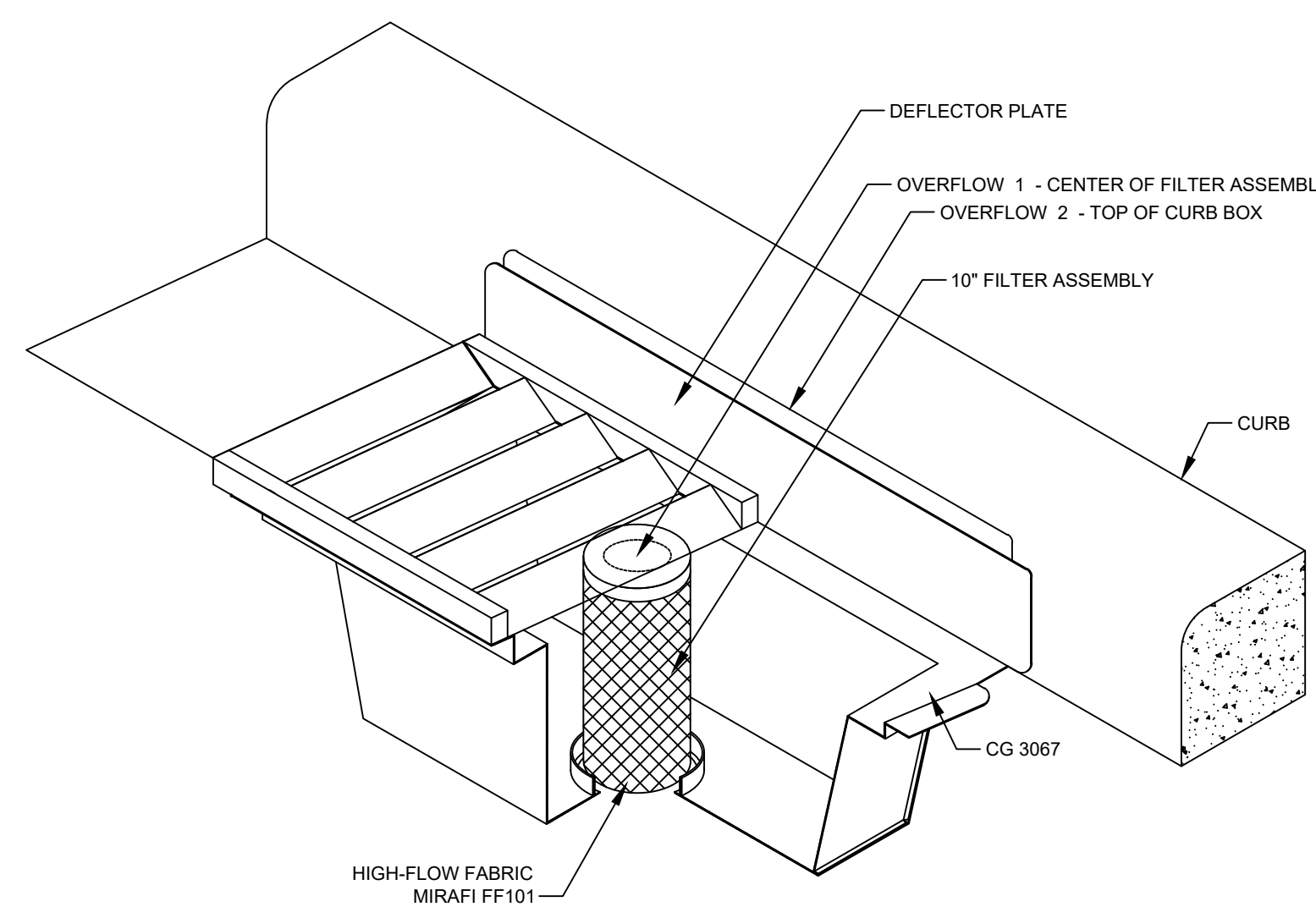
1 POND OUTLET STRUCTURE
C3 NO SCALE



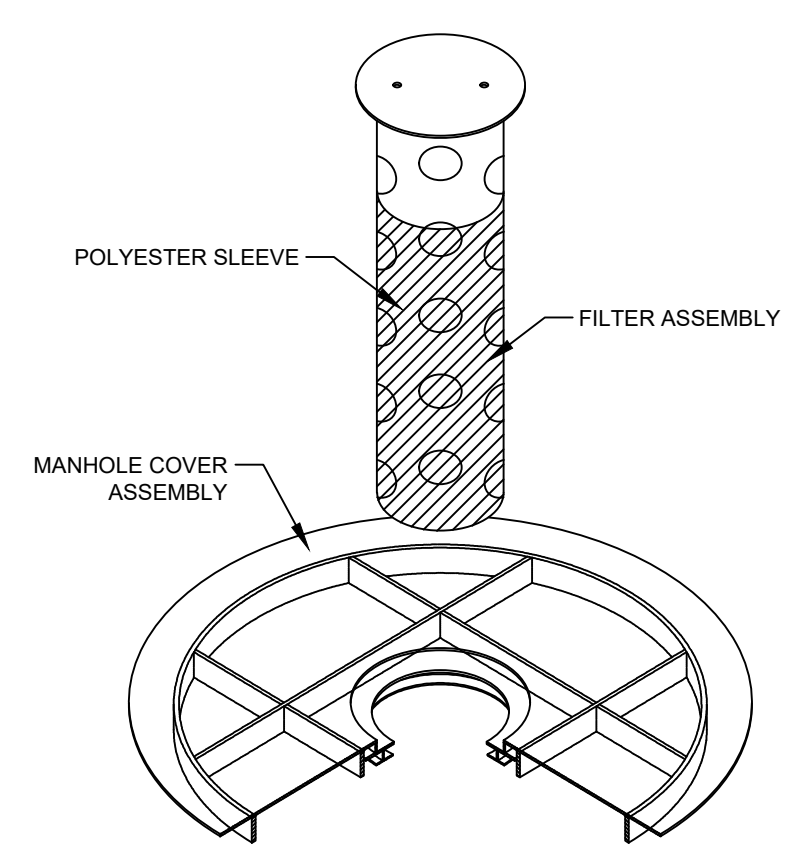
2 SANITARY SEWER CLEANOUT
C3 NO SCALE

SIGNIFICANT TREE INVENTORY TABULATION			
Tree Number	Common Name	Diameter (inches)	Action
601	Siberian Elm	10	Clear & Grub - Invasive
604	American Elm	10	Clear & Grub - Parking Lot
606	American Elm	8	Clear & Grub - Parking Lot
607	American Elm	10	Clear & Grub - Parking Lot
608	American Elm	9	Clear & Grub - Parking Lot
609	American Elm	9	Clear & Grub - Parking Lot
610	American Elm	15	Clear & Grub - Parking Lot
611	Boxelder	8	Clear & Grub - Parking Lot
612	Boxelder	11	Clear & Grub - Parking Lot
613	American Elm	8	Clear & Grub - Pond
614	Boxelder	9	Clear & Grub - Pond
615	Cottonwood	18	Clear & Grub - In City Right-of-Way
616	Cottonwood	8	Clear & Grub - In City Right-of-Way
617	American Elm	12	Clear & Grub - Parking Lot
618	American Elm	10	Clear & Grub - Pond
619	American Elm	12	Clear & Grub - Pond
621	American Elm	9	Clear & Grub - Pond
623	American Elm	9	Clear & Grub - Pond
624	American Elm	9	Clear & Grub - Pond
625	American Elm	14	Clear & Grub - Pond
626	American Elm	8	Clear & Grub - Pond
627	American Elm	9	Clear & Grub - Pond
632	Boxelder	10	Clear & Grub - Pond
633	Boxelder	9	Clear & Grub - Pond
634	American Elm	8	Clear & Grub - Pond
635	American Elm	11	Clear & Grub - Pond
636	Boxelder	8	Clear & Grub - Pond
637	Boxelder	8	Clear & Grub - Pond
638	Boxelder	8	Clear & Grub - Pond

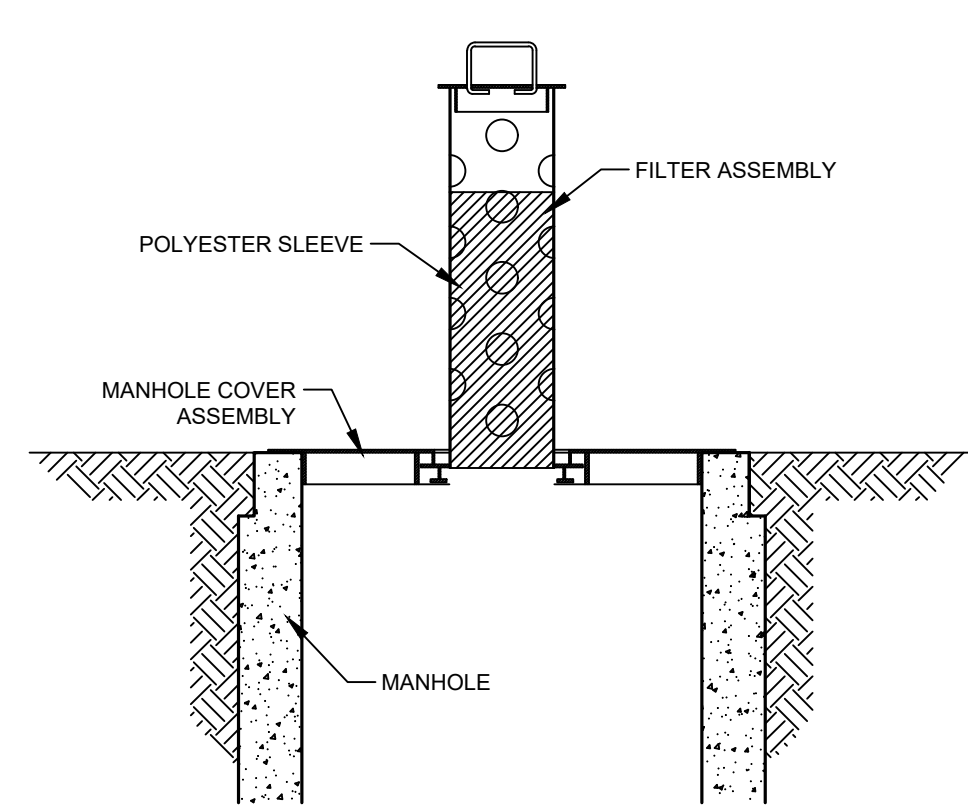
Significant Tree Inches 287
 Significant Tree Inches Removed 287
 Invasive Species Inches Removed 10
 Inches Removed for Ponding 159



3 STORM DRAIN INLET PROTECTION ①
C3



ISOMETRIC VIEW



IN-PLACE ELEVATION VIEW

4 STORM DRAIN INLET PROTECTION ①
C3

REFERENCE NOTES:
 ① INLET PROTECTION SHALL BE INSTALLED ON ALL CASTINGS RECEIVING RUNOFF FROM THE PROJECT AREA. INLET PROTECTION SHALL BE INSTALLED ON EXISTING, OFF SITE CASTINGS PRIOR TO THE START OF CONSTRUCTION. WIMCO MODELS CG 3067 AND RD 27 ARE SHOWN.



Aug 08, 2023 - 9:51am K:\PRIVATE\3395.21\ENGINEERING\PLAN DWG\339521_DETAILS.dwg

DATE	REVISION
8/8/23	PLAN REVISIONS PER CITY REVIEW

I hereby certify that this plan, specification, or report was prepared by me or under my direct supervision and that I am a duly Licensed Professional Engineer under the laws of the State of Minnesota.
 Timothy A. Eggen, P.E.
 Date 7/17/23 Lic. No. 43362

DESIGNED BY: TAE
 DRAWN BY: TAE
 CHECKED BY: CJJ



Hakanson Anderson
 Civil Engineers and Land Surveyors
 3601 Thurston Ave., Anoka, Minnesota 55303
 763-427-5860 FAX 763-427-0520
 www.hakanson-anderson.com

JAM HOPS

DETAILS
 CITY OF RAMSEY, MINNESOTA

SHEET C3 OF C12 SHEETS
 3395.21