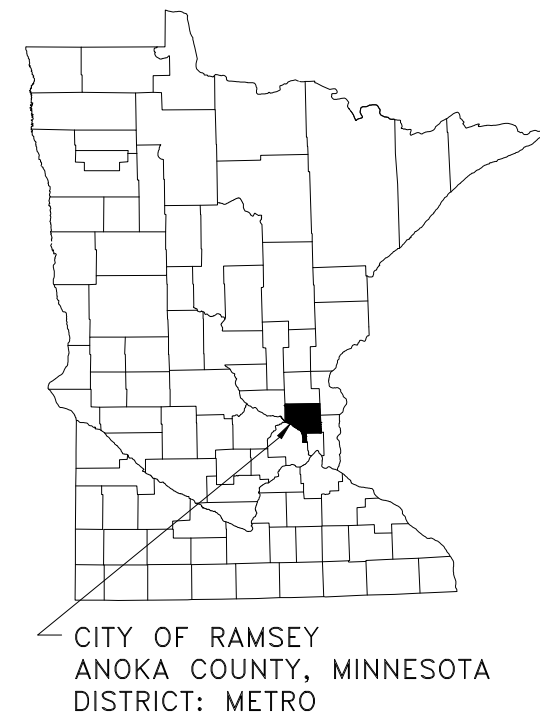
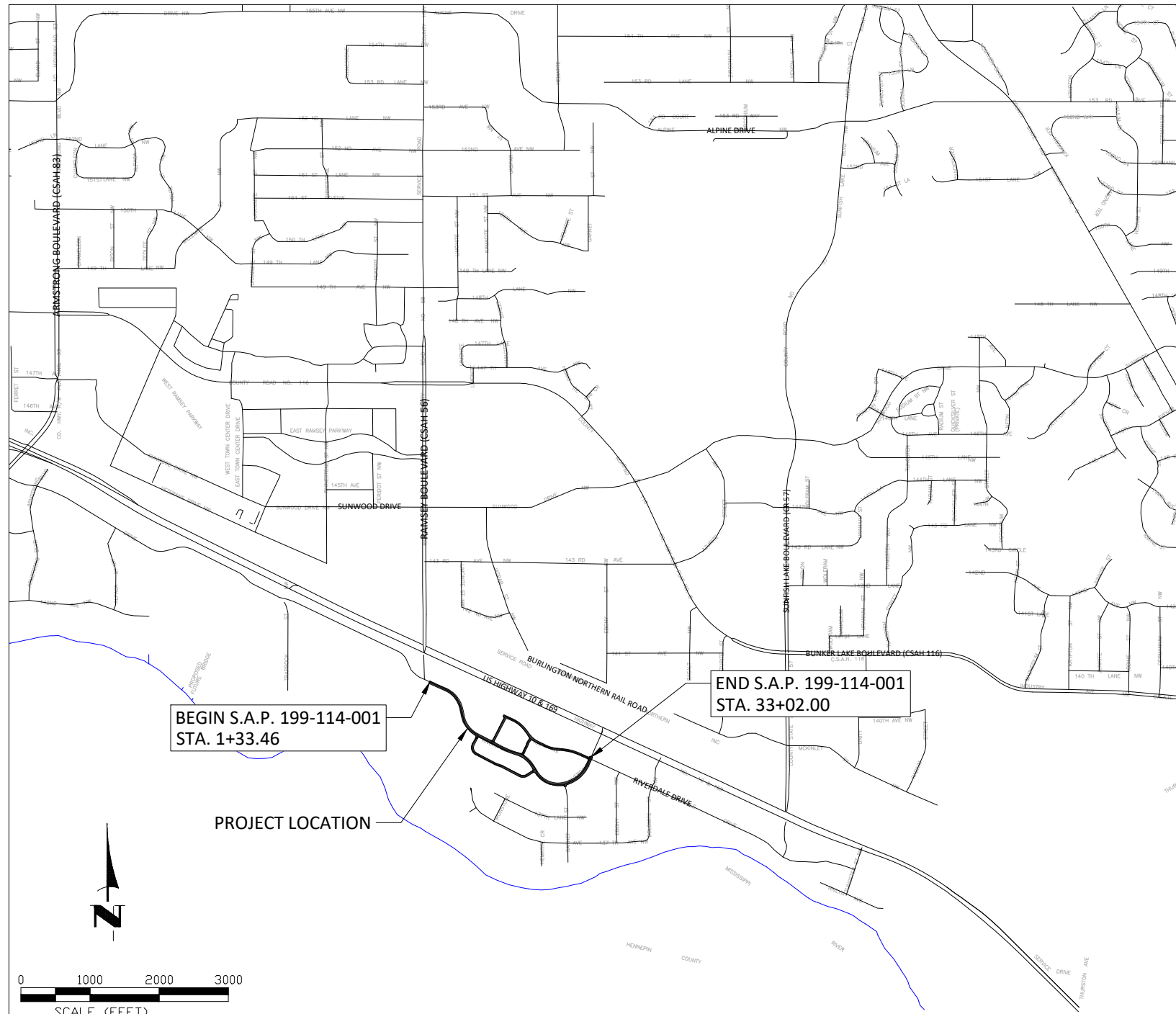


# CITY OF RAMSEY

## STREET CONSTRUCTION PLANS FOR BITUMINOUS MILLING AND PAVING.

### S.A.P. 199-114-001

S.A.P. LOCATED ON RIVERDALE DRIVE BETWEEN RAMSEY BOULEVARD AND 139TH LANE  
FROM NW 1/4 OF THE NW 1/4 OF S34, T32, R25 TO NW 1/4 OF THE NW 1/4 OF S34, T32, R25



THE SUBSURFACE UTILITY INFORMATION IN THIS PLAN IS UTILITY QUALITY LEVEL D. THIS QUALITY LEVEL WAS DETERMINED ACCORDING TO THE GUIDELINES OF CI/ASCE 38-02, ENTITLED "STANDARD GUIDELINES FOR THE COLLECTION AND DEPICTION OF EXISTING SUBSURFACE UTILITY DATA."

NOTE: EXISTING UTILITY INFORMATION SHOWN ON THIS PLAN HAS BEEN PROVIDED BY THE UTILITY OWNER. THE CONTRACTOR SHALL FIELD VERIFY EXACT LOCATIONS PRIOR TO COMMENCING CONSTRUCTION AS REQUIRED BY STATE LAW. NOTIFY GOPHER STATE ONE CALL 1-800-252-1166 OR 651-454-0002



### GOVERNING SPECIFICATIONS

THE 2020 EDITION OF THE MINNESOTA DEPARTMENT OF TRANSPORTATION "STANDARD SPECIFICATIONS FOR CONSTRUCTION" AND THE "SUPPLEMENTAL SPECIFICATIONS" DATED SEPTEMBER 2022 SHALL GOVERN.

ALL FEDERAL, STATE AND LOCAL LAWS, REGULATIONS AND ORDINANCES SHALL BE COMPLIED WITH IN THE CONSTRUCTION OF THIS PROJECT.

ALL TRAFFIC CONTROL DEVICES AND SIGNING SHALL CONFORM TO THE MINNESOTA MANUAL ON UNIFORM TRAFFIC CONTROL DEVICES, INCLUDING THE FIELD MANUAL FOR TEMPORARY TRAFFIC CONTROL ZONE LAYOUTS.

#### SHEET INDEX

THIS PLAN CONTAINS 22 SHEETS

SHEET NO.	DESCRIPTION
01	TITLE SHEET
02	STATEMENT OF ESTIMATED QUANTITIES
03	TYPICAL SECTIONS
04-05	CITY DETAILS
06-11	MINDOT PED RAMP DETAILS
12-13	INTERSECTION DETAILS
14-16	MISA BITUMINOUS MILL & OVERLAY
17-19	LOCAL STREET BITUMINOUS MILL & OVERLAY
20-22	MISA PAVEMENT MARKING PLAN

PROJECT	STA. TO STA.	GROSS LENGTH	BRIDGE LENGTH	NET LENGTH	NET LENGTH (MILES)	ADT (2023)	ADT (2043)	DESIGN ESAL	R VALUE	TON DESIGN	DESIGN SPEED	DESIGN SPEED NOT MET	NUMBER OF LANES	WIDTH OF LANES	NUMBER OF SHOULDERS	WIDTH OF LANES	FUNCTIONAL CLASSIFICATION
S.A.P. 199-114-001 RIVERDALE DRIVE	1+33 TO 33+02	3169 FT	0 FT	3169 FT	0.60 MI	990	1,089	115,000	60	10	35	STA. 32+26 STOP CONDITION	2	12'	2	8'	COLLECTOR

I hereby certify that this plan, specification, or report was prepared by me or under my direct supervision and that I am a duly Licensed Professional Engineer under the laws of the State of Minnesota.

57095 DATE 06/09/23  
LIC. NO.

APPROVED: \_\_\_\_\_ DATE \_\_\_\_\_  
CITY ENGINEER, CITY OF RAMSEY

DISTRICT STATE AID ENGINEER: REVIEWED FOR COMPLIANCE WITH STATE AID RULES/POLICY

STATE AID ENGINEER: APPROVED FOR STATE AID FUNDING

Jun 09, 2023 - 2:11pm G:\Engineering\AutoCad Dwg\Projects N-Z\Overlays\23-06 2023 MSA Overlay Improvements\Plan Drawings\23-06 Title Sheet.dwg

CITY OF RAMSEY  
7550 SUNWOOD DRIVE  
RAMSEY, MN 55303  
(763) 427-1410 FAX (763) 433-9898

STOPPING SIGHT DISTANCE BASED ON:  
3.5 FT - HEIGHT OF EYE  
2.0 FT - HEIGHT OF OBJECT

DATUM:  
VERTICAL: NAVD 88  
HORIZONTAL: ANOKA COUNTY COORDINATES (1996 ADJUSTMENT)

DATE	REVISION