

CITY OF RAMSEY

BARTHEL'S RUM RIVER ACRES & WHITE PINE ESTATES STREET RECONSTRUCTION

CITY IMPROVEMENT PROJECT NO. 24-01

GOVERNING SPECIFICATIONS

THE 2020 EDITION OF THE MINNESOTA DEPARTMENT OF TRANSPORTATION "STANDARD SPECIFICATIONS FOR CONSTRUCTION" AND THE "SUPPLEMENTAL SPECIFICATIONS" DATED SEPTEMBER 2022 SHALL GOVERN.

ALL FEDERAL, STATE AND LOCAL LAWS, REGULATIONS AND ORDINANCES SHALL BE COMPLIED WITH IN THE CONSTRUCTION OF THIS PROJECT.

ALL TRAFFIC CONTROL DEVICES AND SIGNING SHALL CONFORM TO THE MINNESOTA MANUAL ON UNIFORM TRAFFIC CONTROL DEVICES, INCLUDING THE FIELD MANUAL FOR TEMPORARY TRAFFIC CONTROL ZONE LAYOUTS.

SHEET INDEX

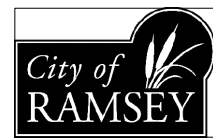
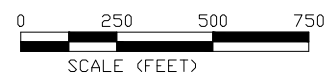
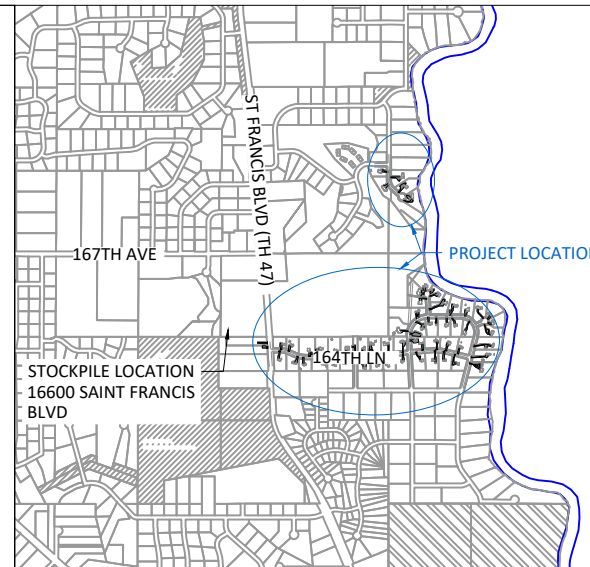
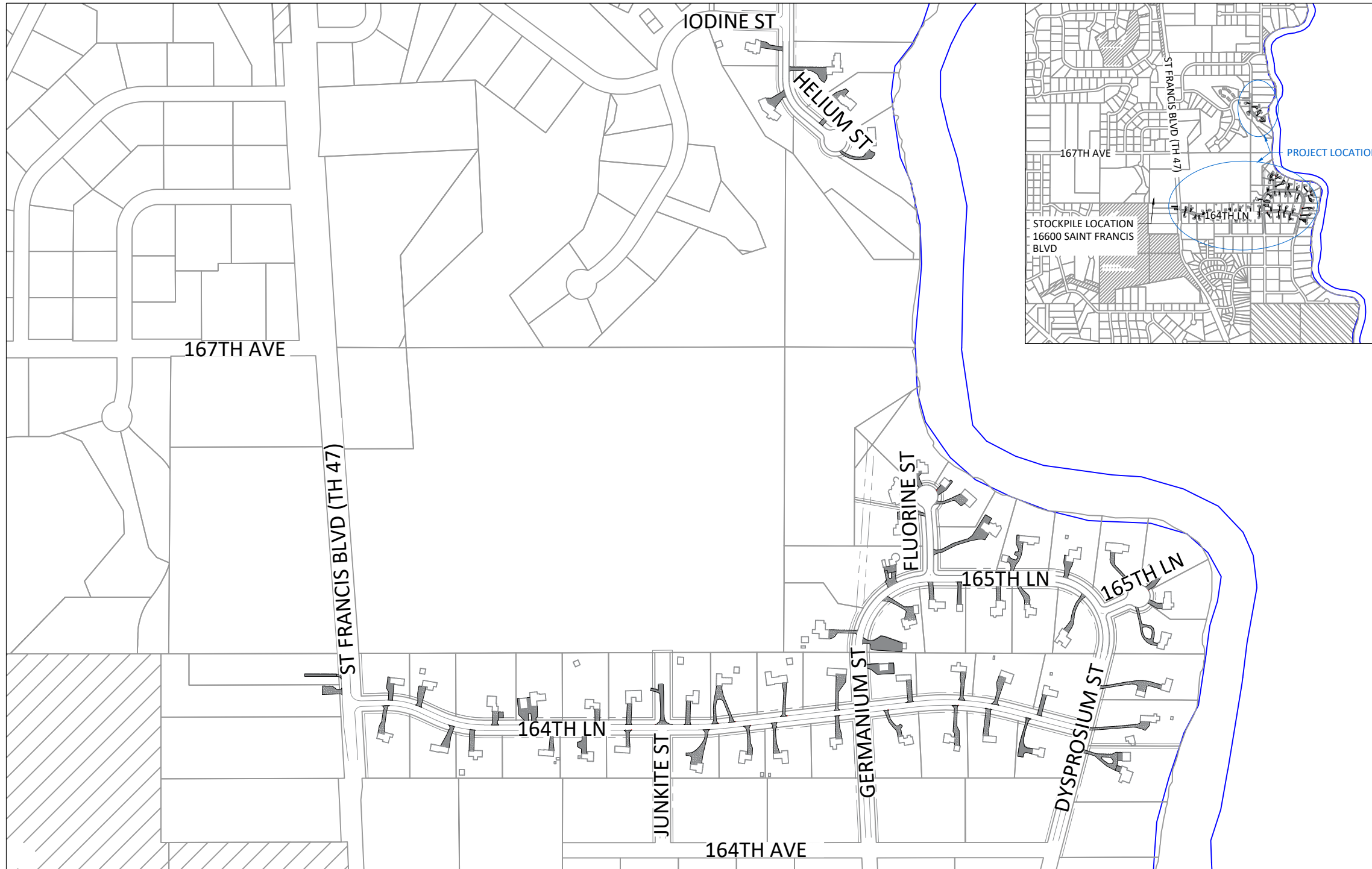
THIS PLAN CONTAINS 50 SHEETS

SHEET No.	DESCRIPTION
-----------	-------------

01	TITLE SHEET
02	STATEMENT OF ESTIMATED QUANTITIES
03	ALIGNMENT LAYOUT
04	TYPICAL SECTION
05	CITY DETAILS
06-07	SWPPP
08-13	EROSION CONTROL
14-19	REMOVALS
20-30	STREET CONSTRUCTION
31-50	CROSS SECTIONS

LEGEND

	SANITARY MANHOLE		Easement - Drainage & Utility
	STORM SEWER MANHOLE		Easement - Northern Natural Gas
	CATCH BASIN MANHOLE		Easement - Roadway
	CATCH BASIN		LOT LINE
	CATCH BASIN - GROUT		ELECTRIC LINE
	CATCH BASIN - RESET		ELECTRIC LINE - BURIED
	FLARED END SECTION		ELECTRIC LINE - OVERHEAD
	CULVERT END SECTION		GAS LINE
	HYDRANT		TELECOMMUNICATION LINE
	VALVE		TELECOMM - OVERHEAD
	TREE - CONIFEROUS		FIBER OPTIC LINE
	TREE - DECIDUOUS		TREE LINE
	SHRUB		LANDSCAPE
	LIGHT POLE		RETAINING WALL
	SIGN		FENCE
	MAILBOX		SILT FENCE
	PEDESTAL - TELECOM		FLOTATION SILT CURTAIN
	PEDESTAL - ELECTRIC		INLET PROTECTION
	HAND HOLE		EROSION CONTROL LOG
	BITUMINOUS PAVEMENT		WATERMAIN
	DRIVE - BITUMINOUS		SANITARY SEWER
	DRIVE - CONCRETE		STORM SEWER
	DRIVE - GRAVEL		DRAIN TILE
	CONCRETE WALK		DRAINAGE ARROW
	BITUMINOUS TRAIL		LANDSCAPE - ROCK
	REMOVE BIT PAVE		LANDSCAPE - MULCH
	REMOVE CONCRETE PAVE		LANDSCAPE - RIP RAP
	REMOVE GRAVEL SURFACE		EROSION CONTROL BLANKET
	REMOVE BITUMINOUS FLUME		PR. DRIVE - BITUMINOUS
	MILL BIT PAVEMENT		PR. DRIVE - CONCRETE
	RECLAIM BIT PAVEMENT		PR. DRIVE - GRAVEL
	CONSTRUCTION ENTRANCE		PR. CONCRETE WALK
	RIPRAP CLASSIII		PR. CONCRETE
	VALLEY GUTTER		PR. SEEDING AREA
	B618 CURB & GUTTER		
	SURMOUNTABLE CURB & GUTTER		



CITY OF RAMSEY
7550 SUNWOOD DRIVE
RAMSEY, MN 55303
(763) 427-1410 FAX (763) 433-9898

THE SUBSURFACE UTILITY INFORMATION IN THIS PLAN IS UTILITY QUALITY LEVEL D. THIS QUALITY LEVEL WAS DETERMINED ACCORDING TO THE GUIDELINES OF C/ASCE 38-02, ENTITLED "STANDARD GUIDELINES FOR THE COLLECTION AND DEPICTION OF EXISTING SUBSURFACE UTILITY DATA."

NOTE: EXISTING UTILITY INFORMATION SHOWN ON THIS PLAN HAS BEEN PROVIDED BY THE UTILITY OWNER. THE CONTRACTOR SHALL VERIFY EXACT LOCATIONS PRIOR TO COMMENCING CONSTRUCTION AS REQUIRED BY STATE LAW. NOTIFY GOPHER STATE ONE CALL 1-800-252-1166 OR 651-454-0002



Call before you dig
811
651 454-0002 Metro
800 252-1166 Outstate
www.gopherstateonecall.org

I hereby certify that this plan, specification, or report was prepared by me or under my direct supervision and that I am a duly Licensed Professional Engineer under the laws of the State of Minnesota.

JOE FERIANCEK, P.E.
ASSISTANT CITY ENGINEER

57095 DATE XX/XX/XX
LIC. NO.

DATE	REVISION

Nov 09, 2023 - 2:46pm
G:\Engineering\AutoCad Dwg\Projects A-M\Barthele's Rum River Acres & White Pine Estates IP 24-01\Plan Drawings\TITLE SHEET.dwg